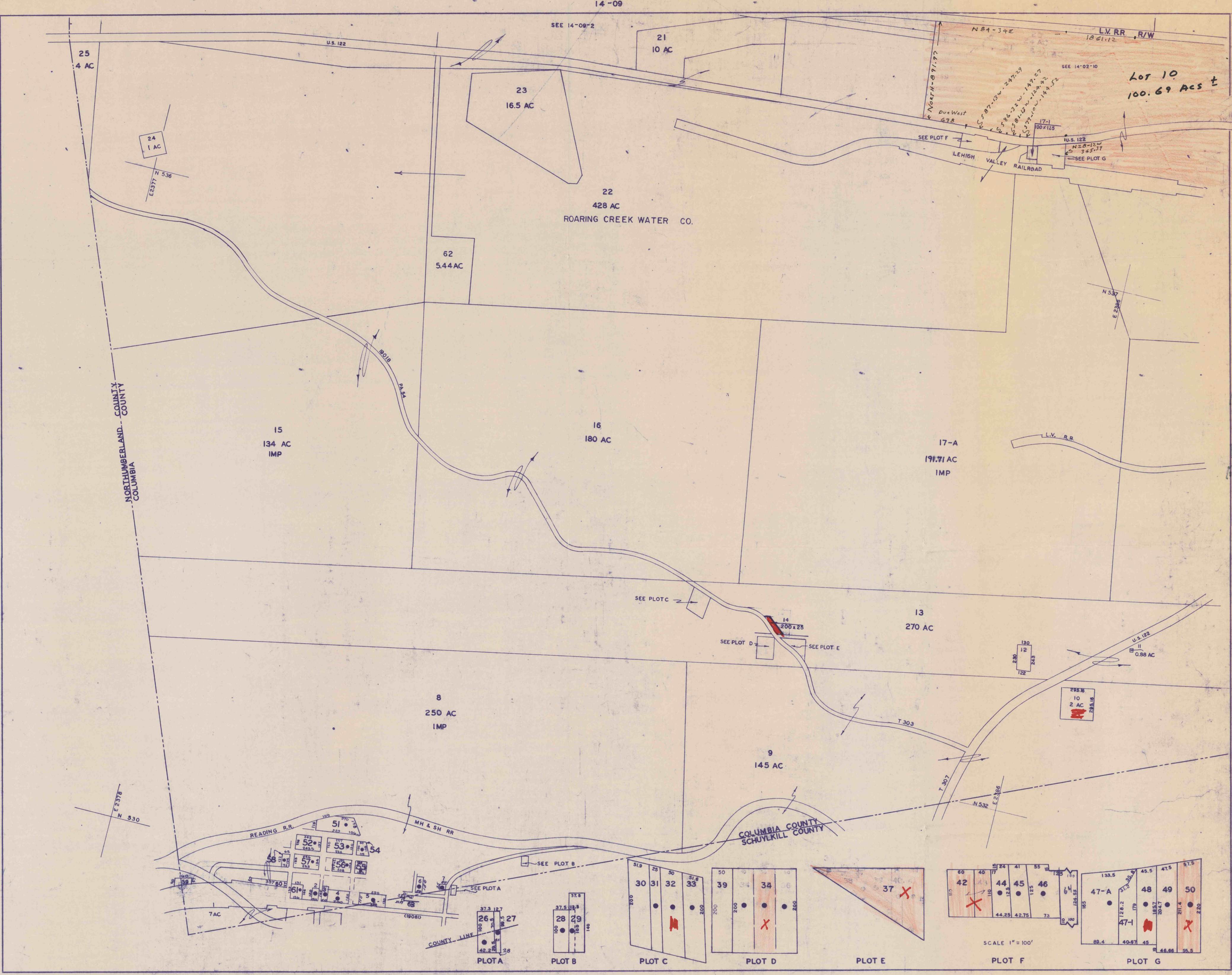


NORTHUMBERLAND COUNTY

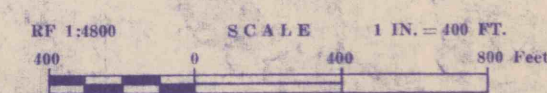
NORTHUMBERLAND COUNTY
COLUMBIA

14-02
OWNED STATE



SCHUYLKILL COUNTY

**TAX ASSESSMENT MAP
COUNTY OF COLUMBIA
PENNSYLVANIA**



- LEGEND**
- IMPROVED PARCEL
 - + COORDINATE INTERSECTIONS

**GWIN, LARSON & KIMBALL
ENGINEERS & CARTOGRAPHERS
ALTOONA & EBENSBURG, PENNA.**

**CONYNGHAM
TOWNSHIP**

TAX MAP No. **14-01**

DATE	BY	DESCRIPTION
12-31-77	RD	8-3-80 J.R.A.
11-1-85	J.R.P.	8-31-81 J.P.A. DROPPED
		8-31-82 J.P.A.
		8-31-83 J.P.A.
		12-31-85 J.R.A.
		12-31-88 J.R.A.
		12-31-87 J.R.A.
		12-31-71 J.P.A.
		12/31/74 D.A.O.
		12/31/75 D.A.O.
		12-31-78 D.A.O.

DATA TAKEN FROM:
AERIAL PHOTOGRAPHS, FLIGHT DATES 1950, 1957,
AND OFFICE OF REGISTRAR AND RECORDER
COLUMBIA COUNTY COURT HOUSE, BLOOMSBURG, PA.

NOTE:
THESE MAPS HAVE BEEN PREPARED FOR THE PURPOSE OF ASSISTING THE COUNTY COMMISSIONERS AND OTHER OFFICIALS IN MAKING TAX ASSESSMENTS AND SHOULD NOT BE USED AS INDIVIDUAL PROPERTY SURVEYS FOR LEGAL TRANSACTIONS. BOUNDARY LINES AND LOT DIMENSIONS WERE INTERPRETED FROM AERIAL PHOTOGRAPHS AND EXISTING COUNTY RECORDS. BOUNDARIES WERE VERIFIED, WHEREVER POSSIBLE BY INTERVIEW WITH PROPERTY OWNER.
AT NO TIME WERE MEASUREMENTS VERIFIED BY FIELD SURVEYS.