

DELAWARE

HUDSON.

GB 4, 1319
1-4-1729
C-3

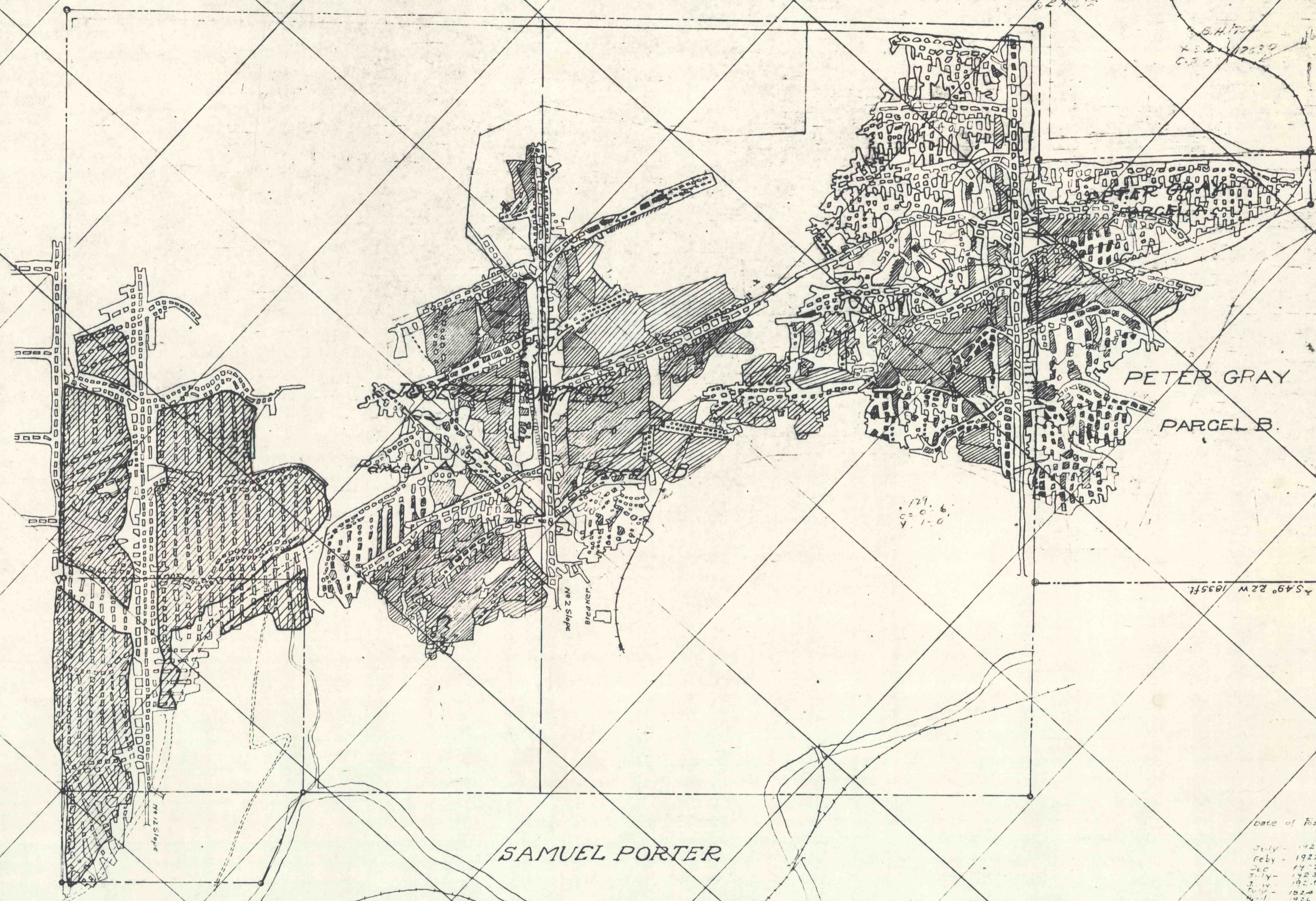
1-5-1729
C-2

B.H. 1704
1-2-1730
C-1

N 48° 45' E 1500 ft

B.H. 1700
1-4-1729
C-1

B.H. 1611
1-5-1729
C-1



PETER GRAY
PARCEL B.

SAMUEL PORTER

Date of Postings

- July - 1921
- Feb - 1922
- Dec - 1922
- July - 1923
- July - 1924
- July - 1924
- Dec - 1926
- July - 1927
- Oct. 1935
- July 1942 E.D.

No. 1. Dunmore Vein
scale 1" = 400'