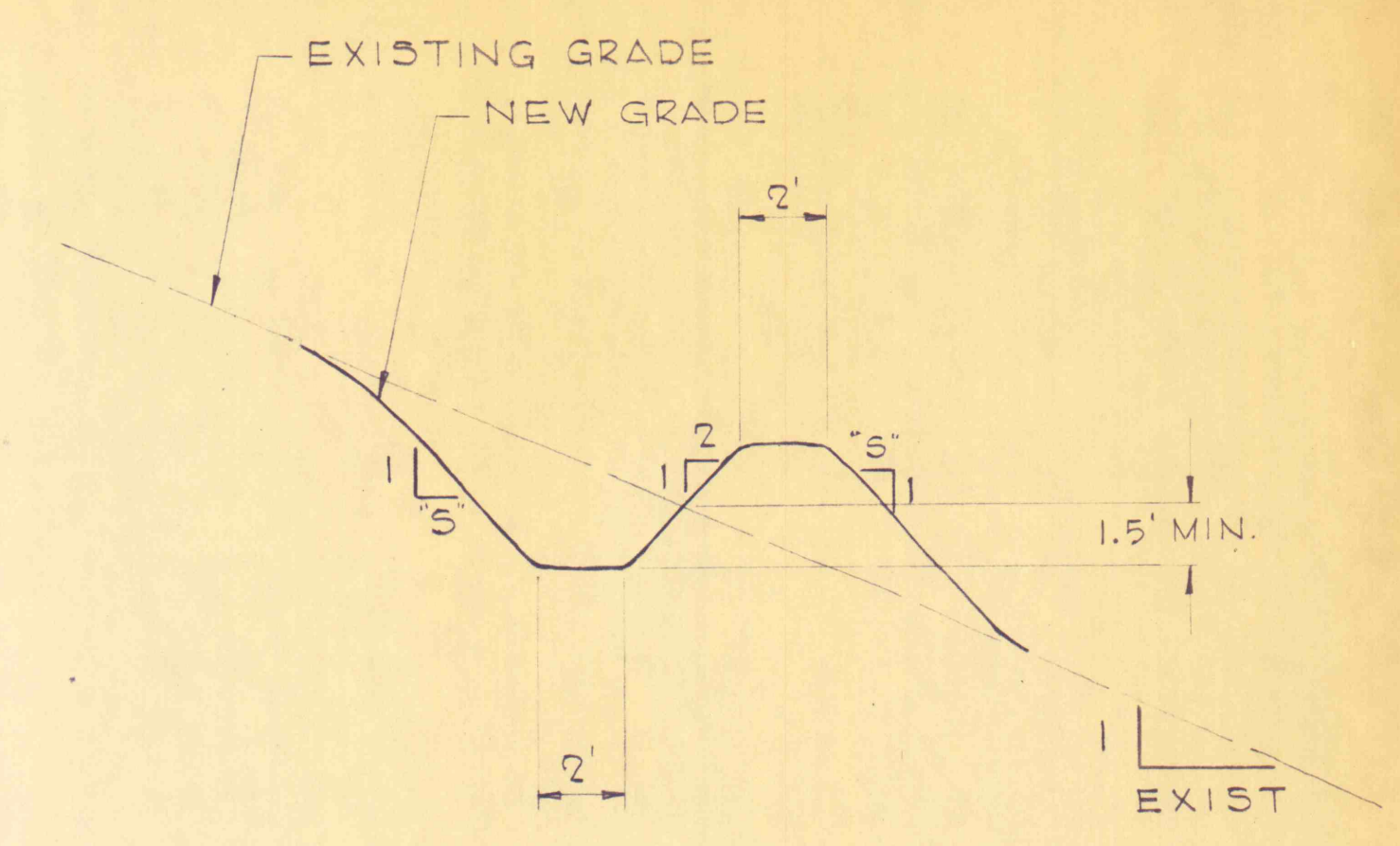
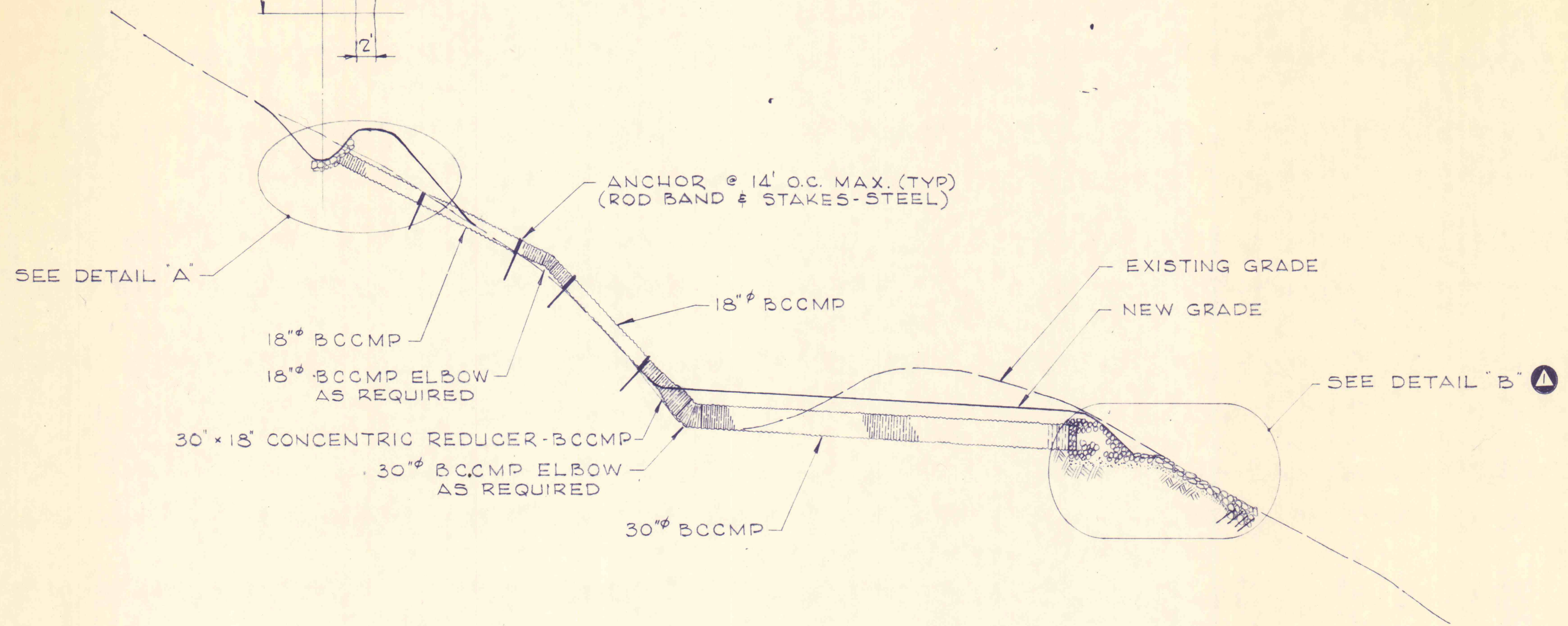


P L A N



TYPICAL DITCH SECTION

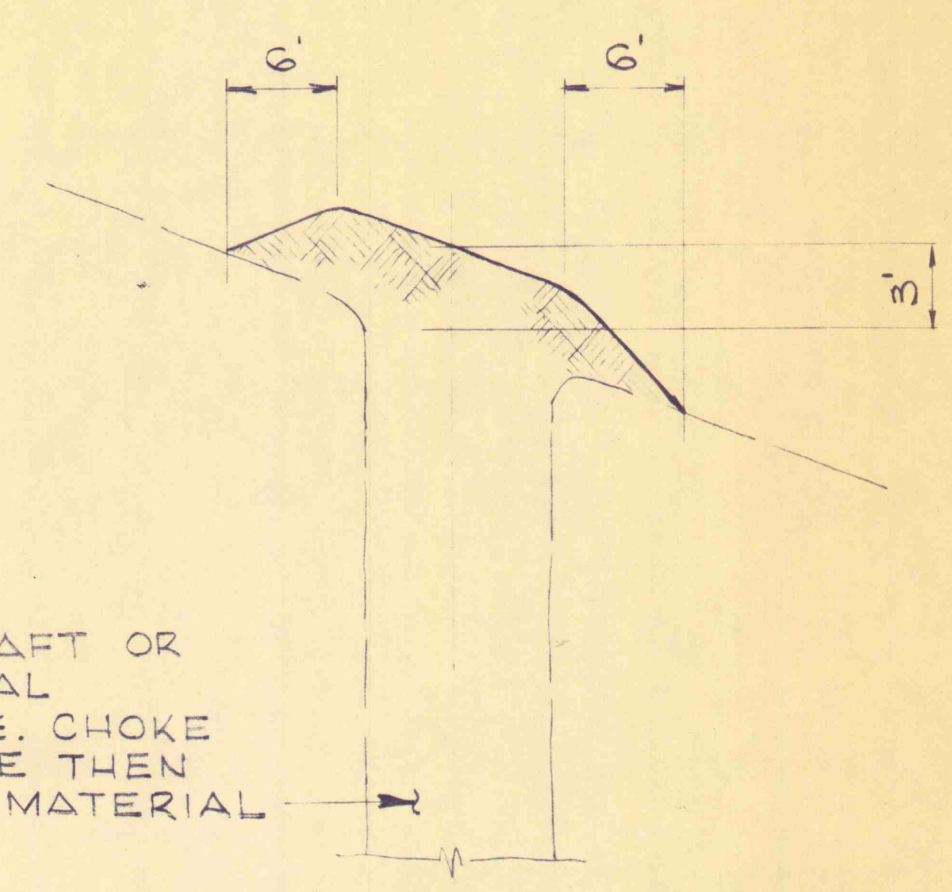


S E C T I O N

TYPICAL PLAN & SECTION AT DRAINAGE STRUCTURE

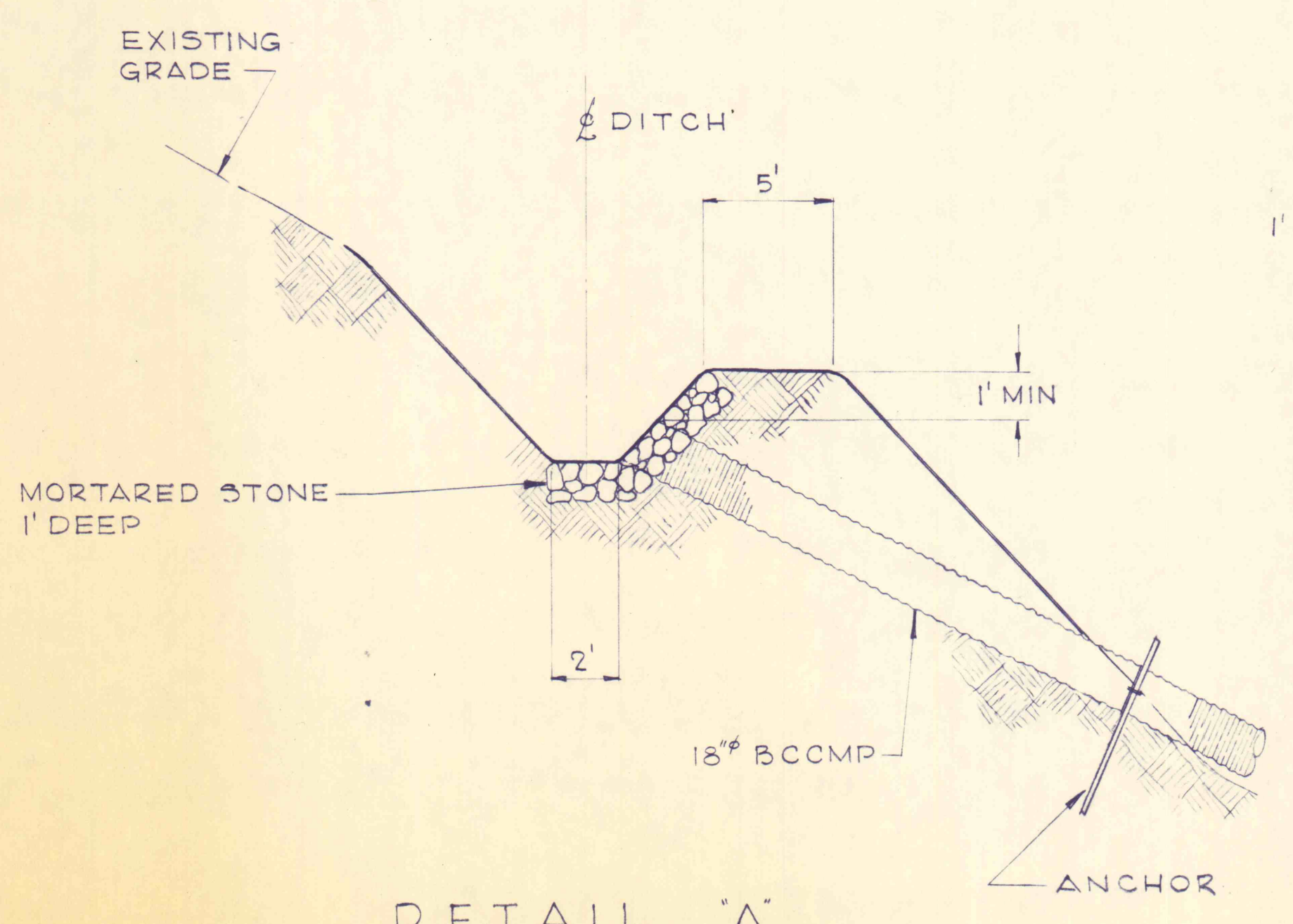
SCALE : 1" = 10' HORIZ., 1" = 10' VERT

NOTE: SEE DRAWING NO. 1 THRU 5 FOR LOCATIONS, SIZES & SLOPES OF DRAINAGE STRUCTURES. SECTION & DETAILS ARE FOR STA 14+90, OTHER STATIONS TYPICAL.



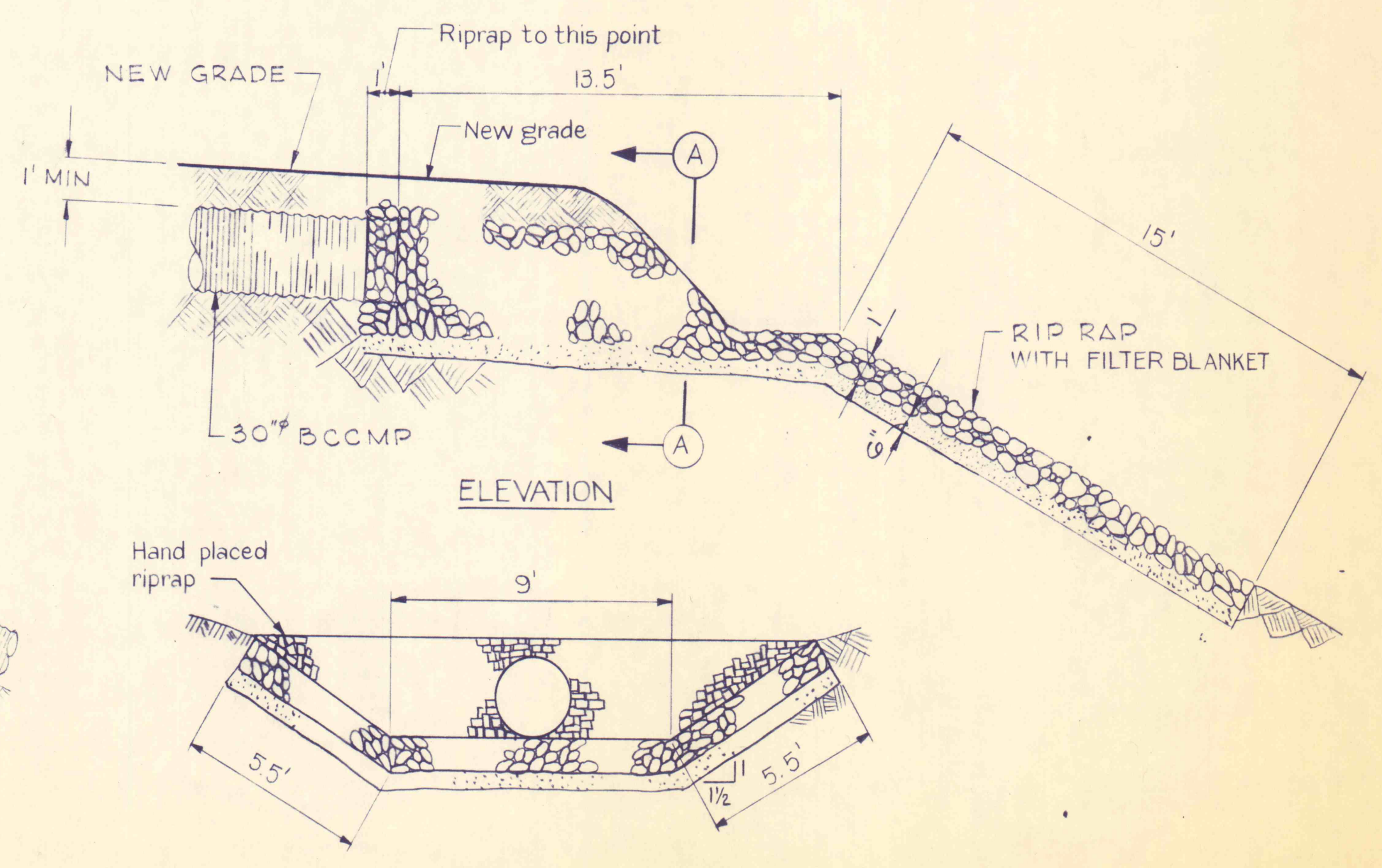
FILL EXISTING SHAFT OR HOLE WITH MATERIAL AVAILABLE AT SITE. CHOKE WITH LARGE STONE THEN FILL WITH FINER MATERIAL.

TYPICAL METHOD OF FILLING EXISTING SHAFTS



DETAIL "A"

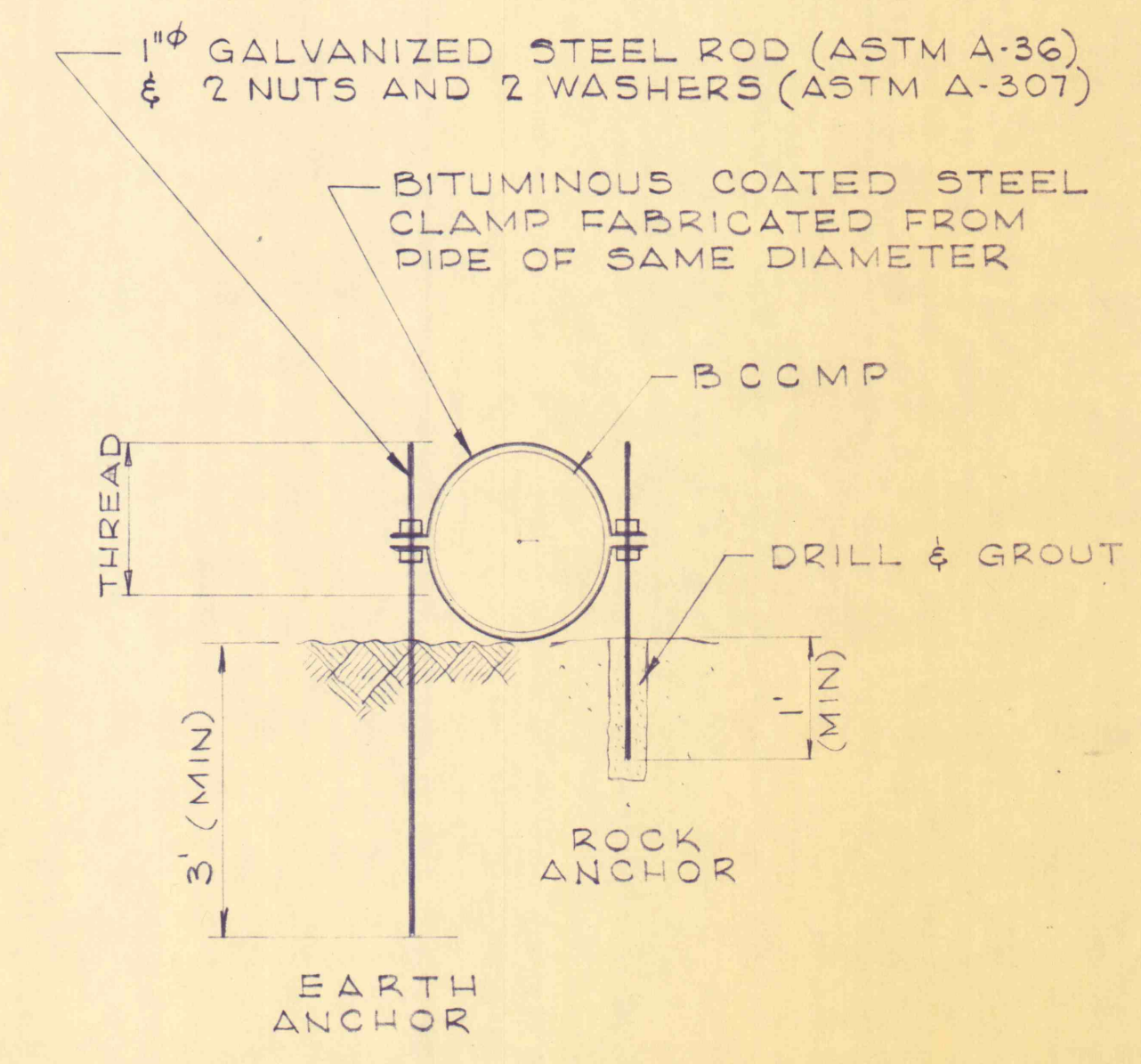
SEE TYPICAL DITCH SECTION FOR SIDE SLOPES



ELEVATION

SECTION A-A

DETAIL "B"



TYPICAL ANCHOR DETAIL

EX 12
OR 2
OR 1

NO.	DATE	REVISION	APPR.
0247	AS		
SUBMITTED			
PROFESSIONAL			
APPROVED <i>Thomas Richard Baracci</i> CHIEF - DIVISION OF MINE REHABILITATION			
APPROVED <i>W. J. Perry</i> DIRECTOR - BUREAU OF CONSULTING SERVICES			
COMMONWEALTH OF PENNSYLVANIA DEPARTMENT OF ENVIRONMENTAL RESOURCES OFFICE OF ENGINEERING AND CONSTRUCTION			
PROJECT NO. SL-170 STRIP MINE RECLAMATION QUICK START PROJECT / B STATE GAME LAND NO. 264 WICONISCO CREEK WATERSHED DAUPHIN COUNTY, PENNA.			
SANDERS AND THOMAS, INC. CONSULTING ENGINEERS <small>EXECUTIVE OFFICES: POTTSTOWN, PENNSYLVANIA BRANCH OFFICES: PHILADELPHIA, PA. - LONG ISLAND, N.Y. - MIAMI, FLA. PITTSBURGH, PA. - BALTIMORE, MD. - LONG BEACH, CALIF. - WASHINGTON D.C.</small>			
DRAINAGE			
DRAWN BY	DATE		
DAP	12-1-74		
CHECKED BY	SCALE		
TS			