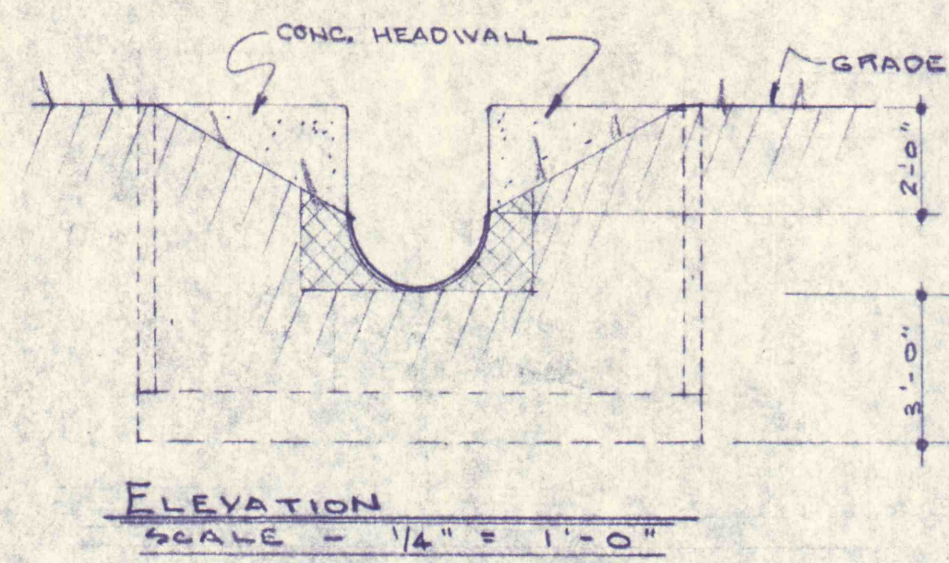
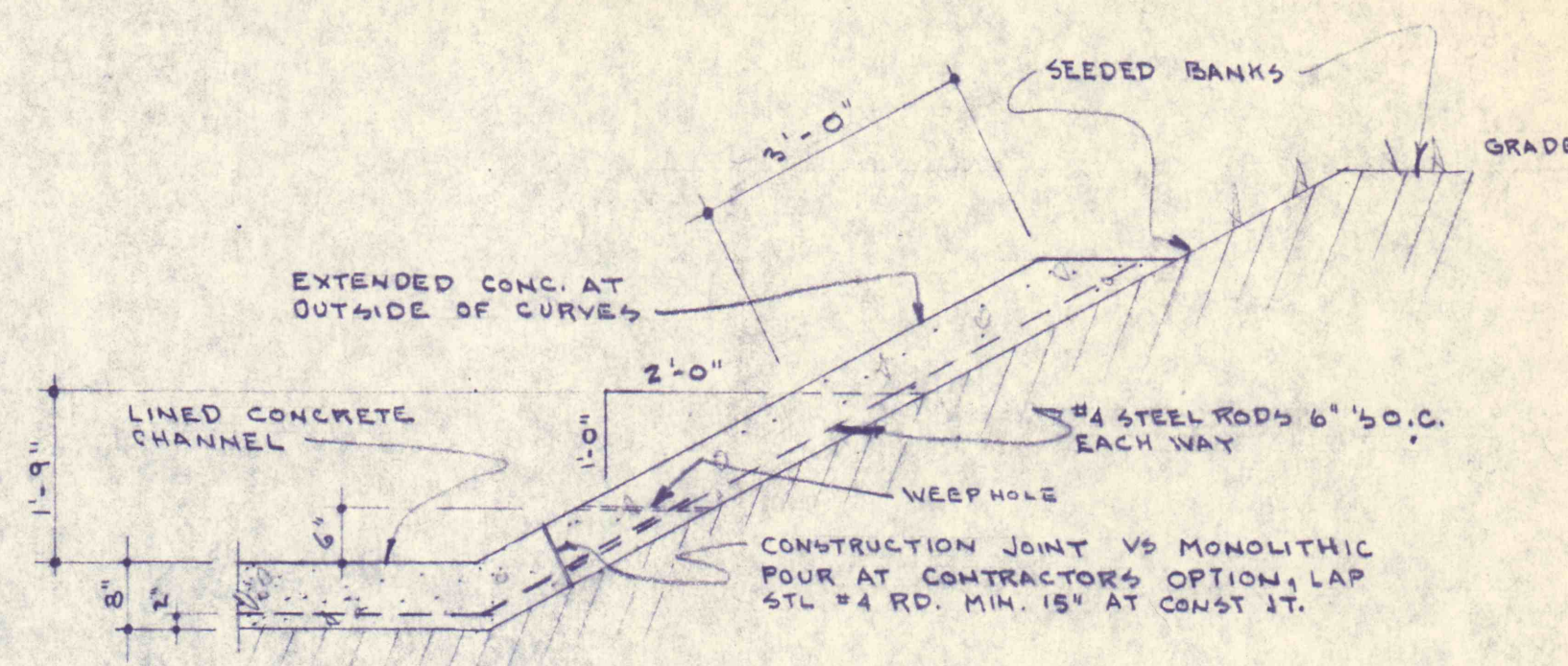


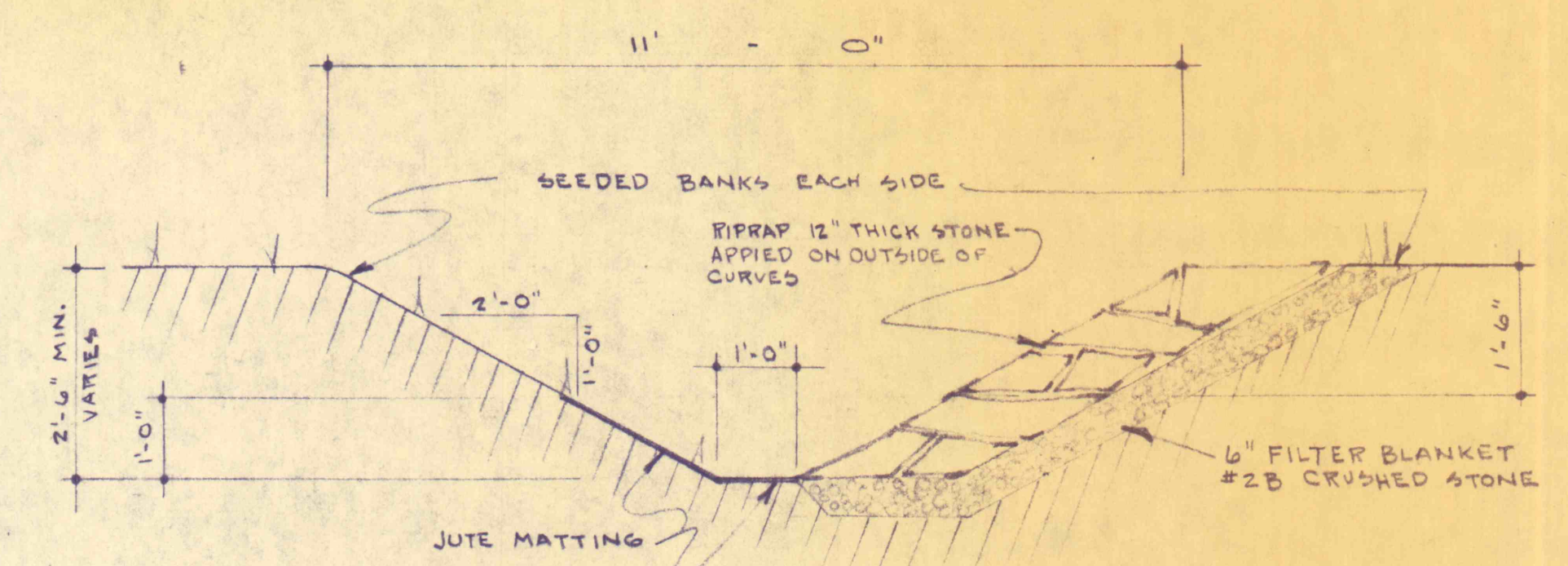
PLAN (ENLARGED)
SCALE = 1/4" = 1'-0"



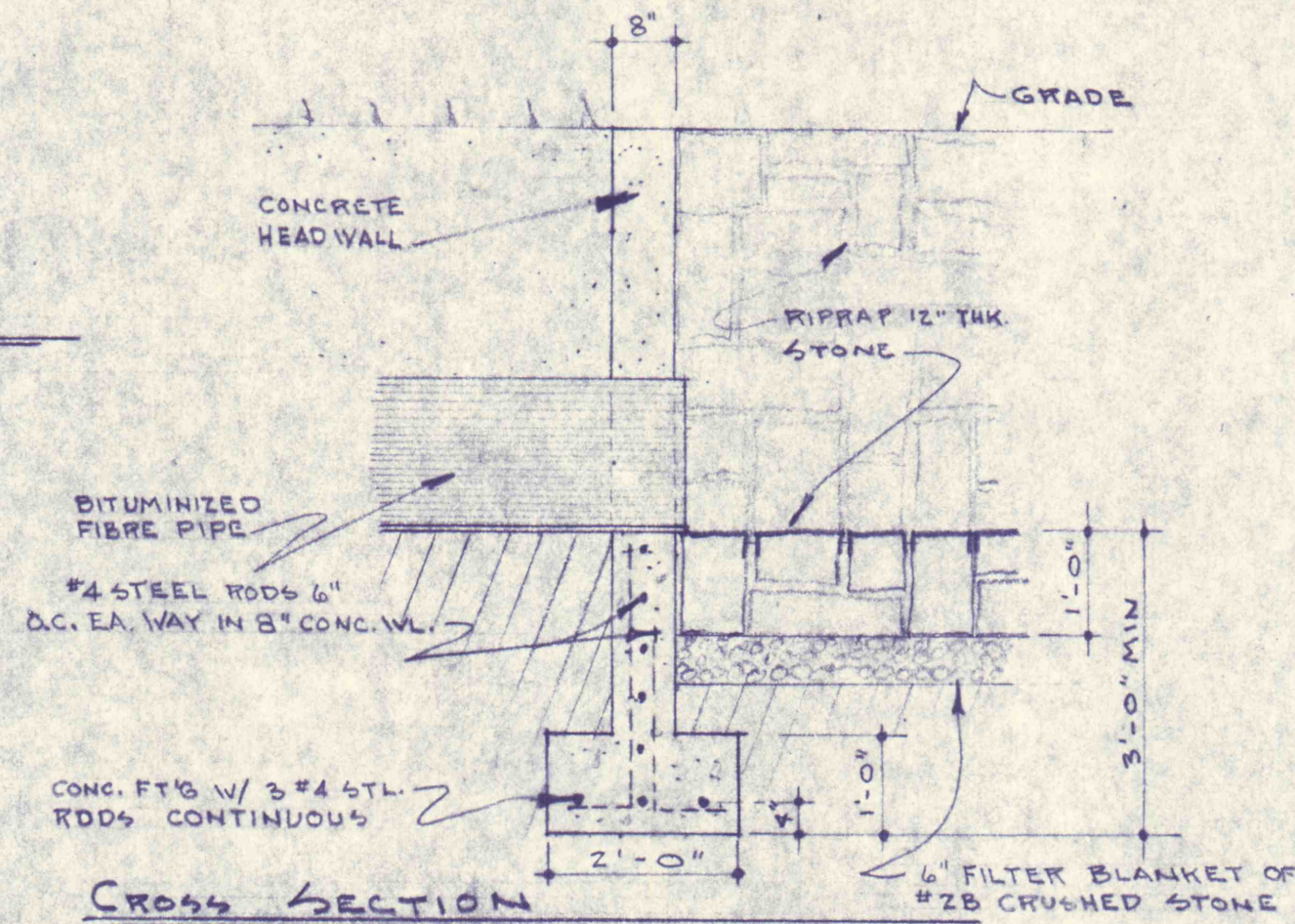
ELEVATION
SCALE = 1/4" = 1'-0"



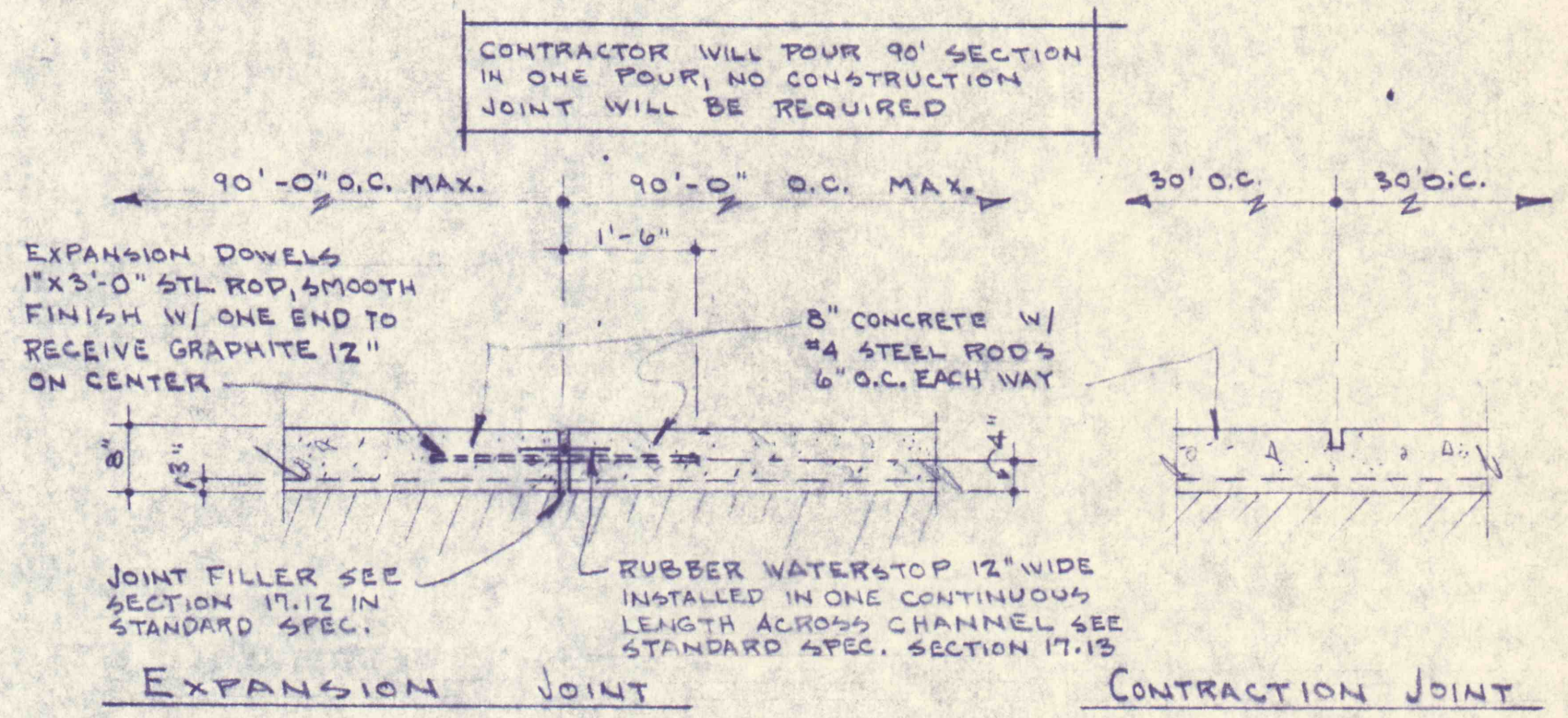
EXTENDED CONCRETE SECTION AT CHANNEL CURVES ⑦
SCALE = 1/2" = 1'-0"



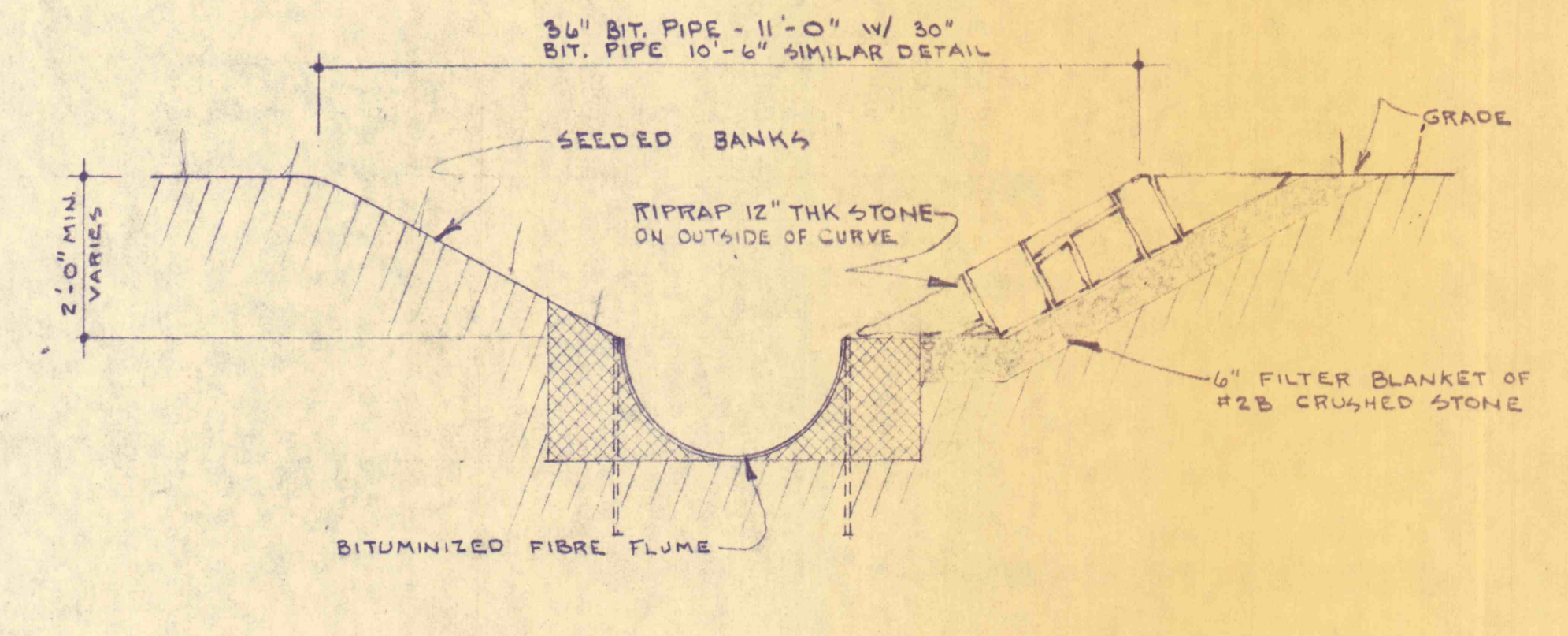
TYP. RIPRAP SECTION AT UNLINED CHANNEL CURVES ⑧
SCALE = 1/2" = 1'-0"



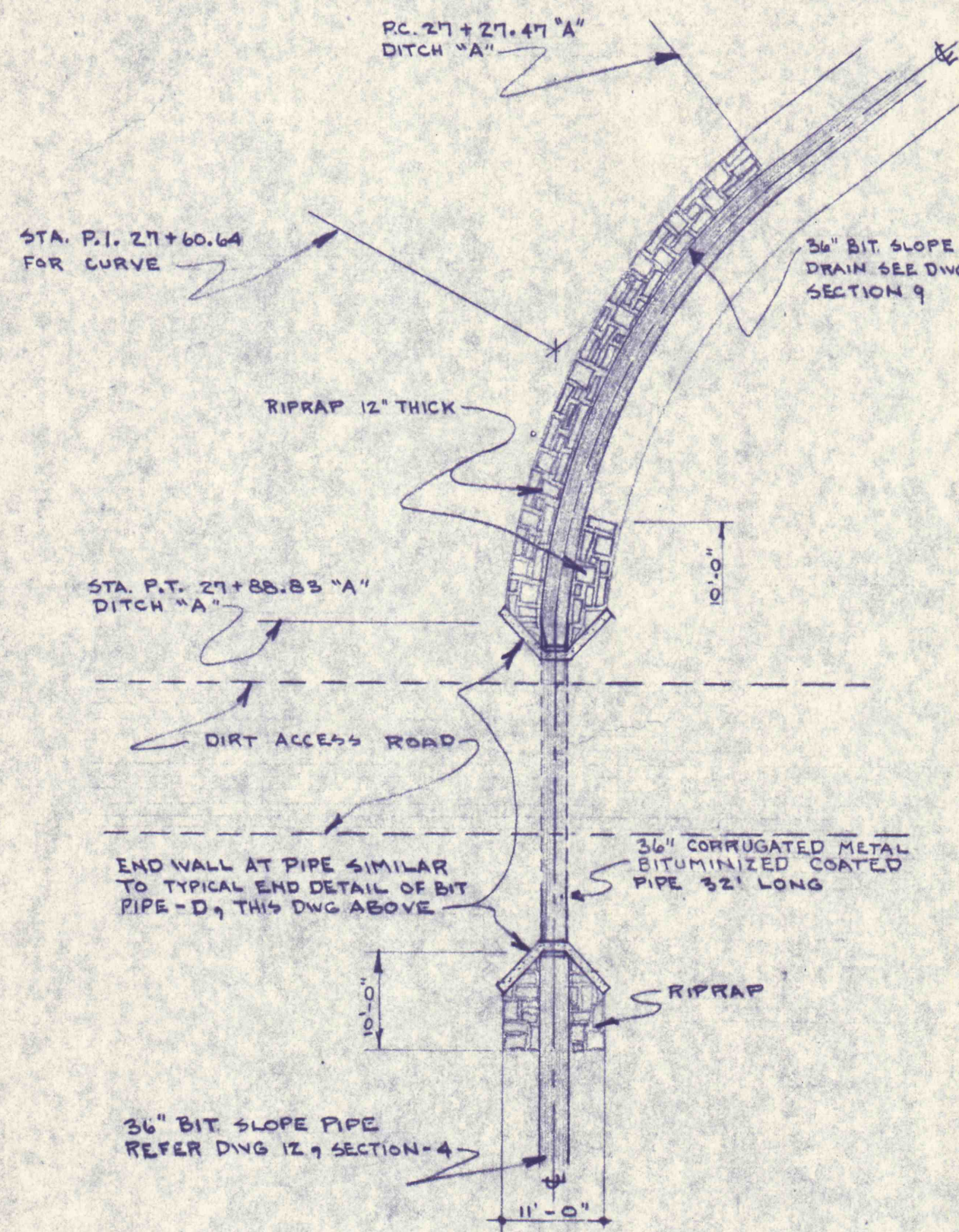
TYPICAL END DETAIL OF BITUMINIZED FIBRE PIPE - ④
SCALE - AS SHOWN



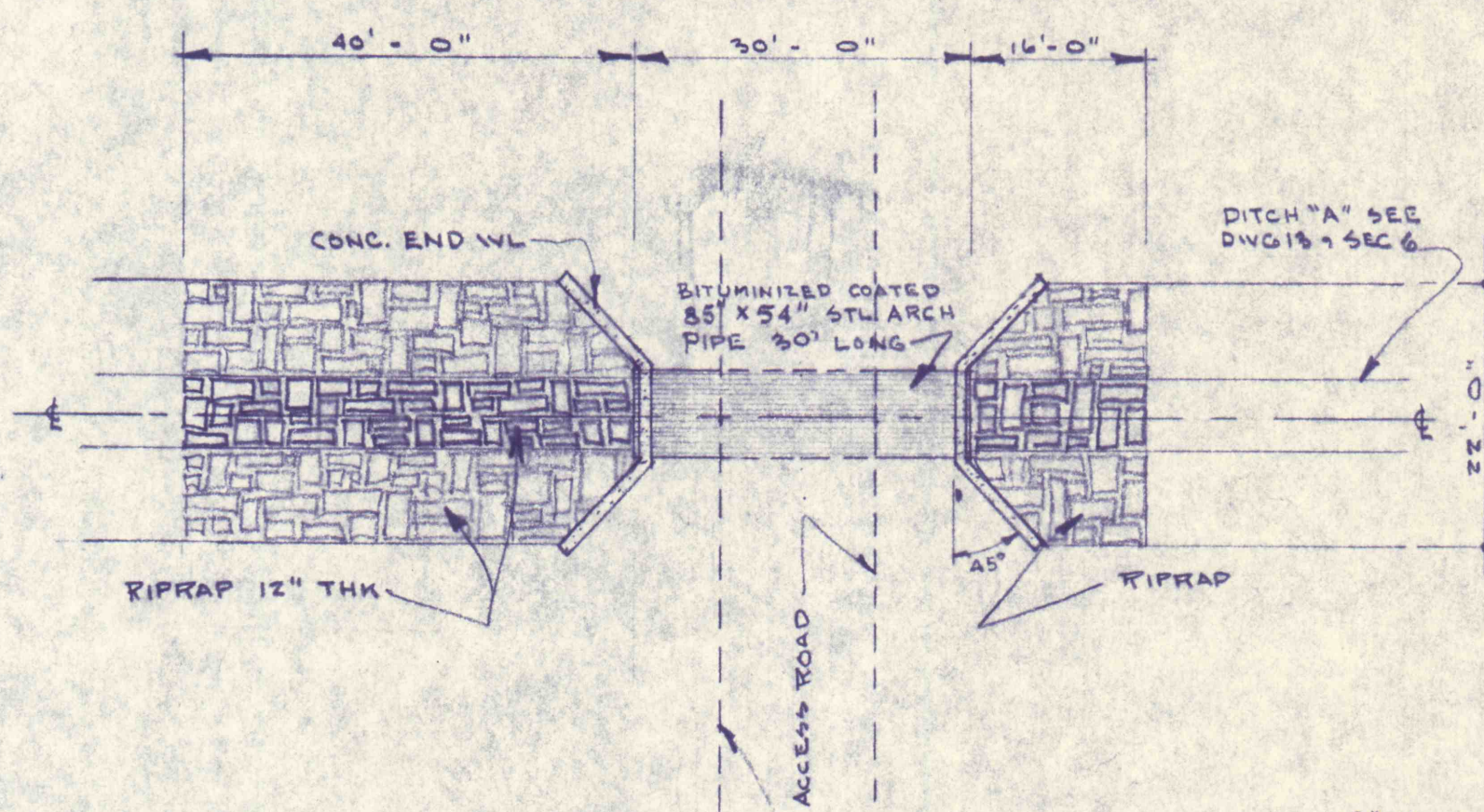
TYPICAL CONCRETE (CHANNEL) JOINT DETAILS - ⑤
SCALE = 1/2" = 1'-0"



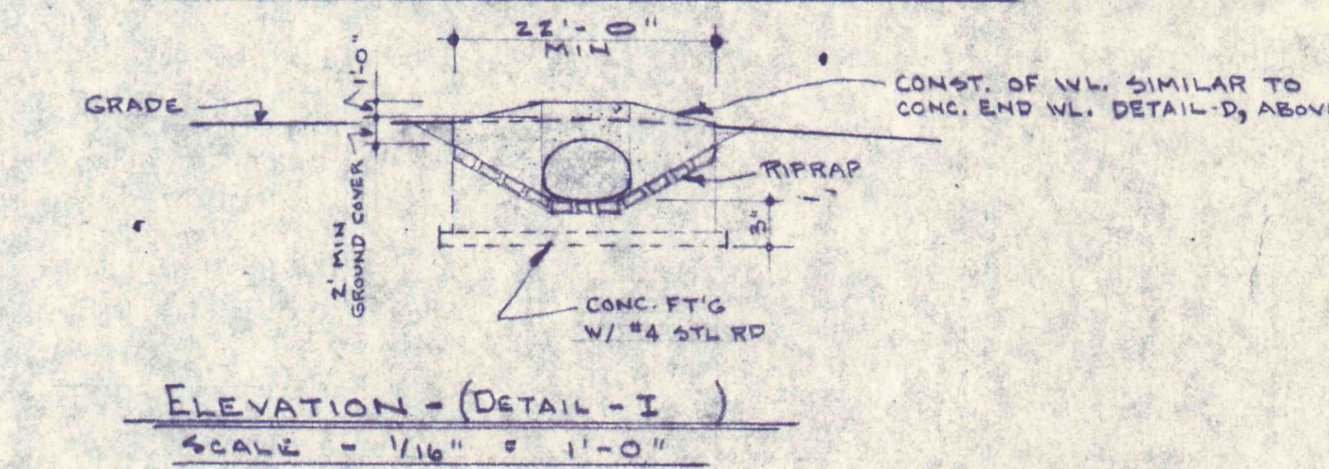
TYP. RIPRAP SECTION AT BIT. FIBRE PIPE AT CURVES ⑨
SCALE = 1/2" = 1'-0"



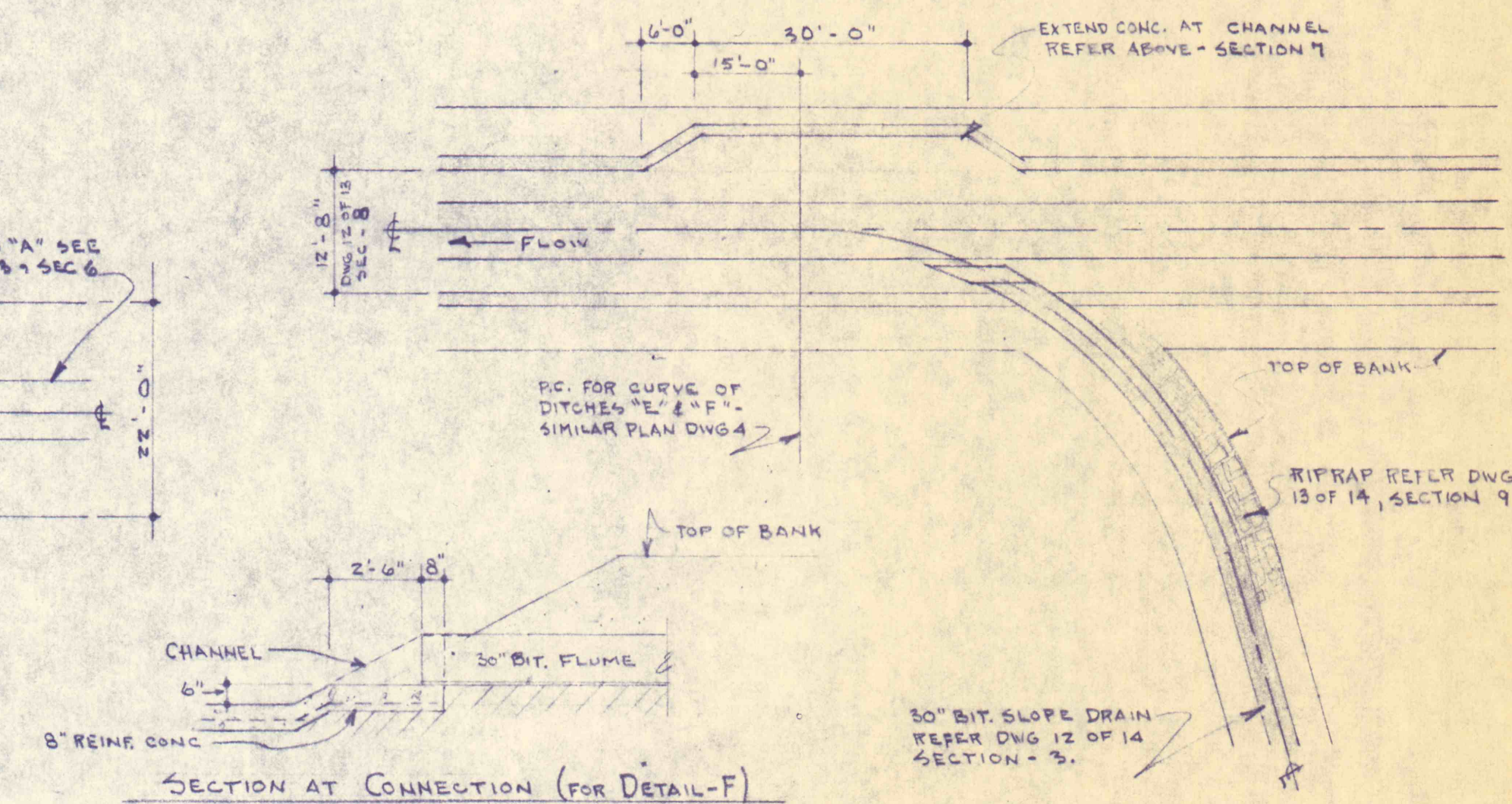
DETAIL OF 24" PIPE AT ACCESS RD. ON DITCH "A" (STA. 27+88.83) - ⑩
SCALE = 1/16" = 1'-0"



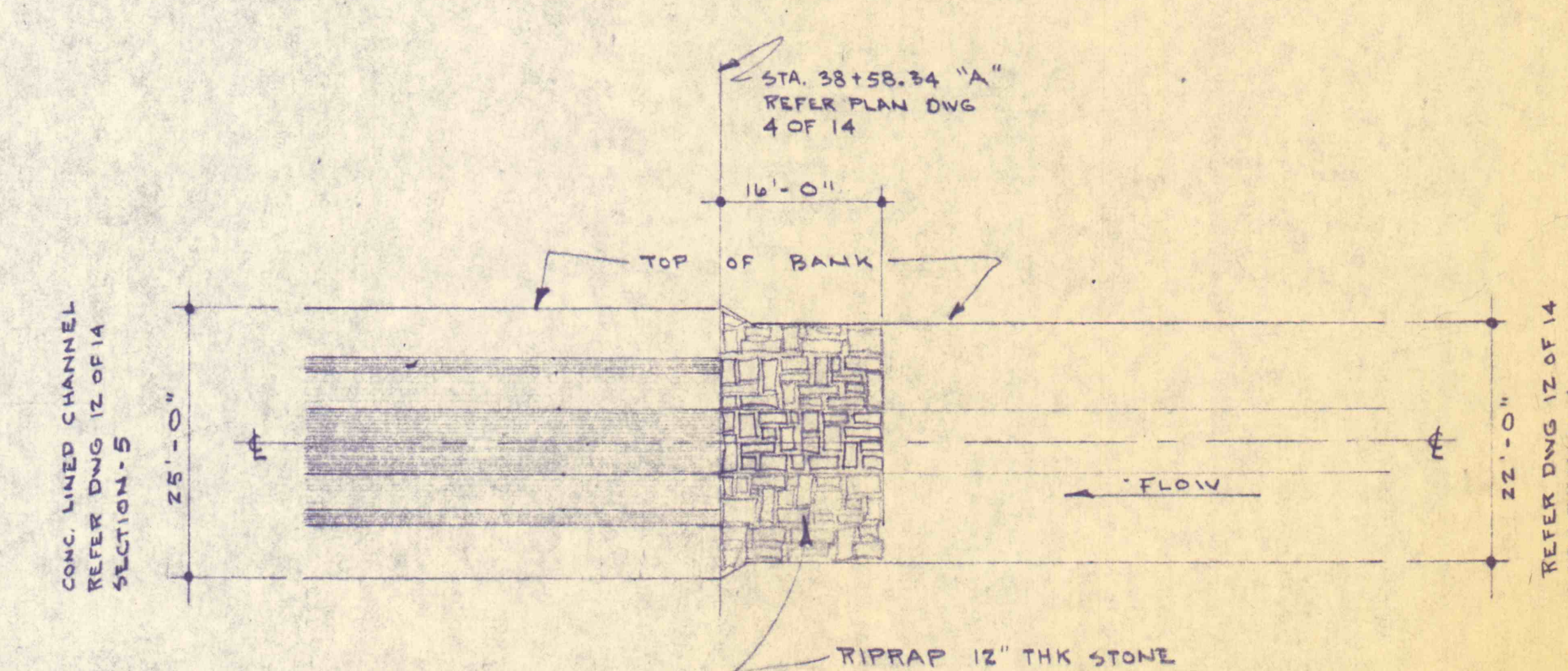
ENLARGED PLAN
SCALE = 1/16" = 1'-0"



DETAIL OF STL. ARCH PIPE AT ACCESS RD. - ⑪
SCALE = 1/16" = 1'-0"



TYPICAL DETAIL OF BIT. SLOPE DRAIN W/ DITCH "A" - ⑫
SCALE = 1/16" = 1'-0"



DETAIL OF LINED CHANNEL & UNLINED CHANNEL CONNECTION - ⑬
SCALE = 1/16" = 1'-0"

NO.	DATE	REVISION	APPR.

COMMONWEALTH OF PENNSYLVANIA
DEPARTMENT OF ENVIRONMENTAL RESOURCES
OFFICE OF ENGINEERING AND CONSTRUCTION

PROJECT NO. SL 113-2
MINE DRAINAGE POLLUTION ABATEMENT
QUICK STARTS A and B
SHAMOKIN CREEK WATERSHED

JOHN S. LUCKENS ASSOC.

P. O. Box 190
Shamokin, Penna.