

P.I. = 4' RT. 58+09.00  
 $\Delta = 33^{\circ}00'$   
 $D = 20^{\circ}00'$   
 $R = 287.94'$   
 $T = 84^{\circ}36'$   
 $L = 165.00'$   
 $E = 12.30'$

EXTEND CONCRETE STA. P.C. 57+26.06 TO  
 STA. P.T. 58+95.09 SEE SECTION 11  
 DWG. NO. 12

P.I. 58+19.09  
 $\Delta = 25^{\circ}47' L$

P.I. = 61+56.00  
 $\Delta = 47^{\circ}$   
 $D = 31^{\circ}08'$   
 $R = 187.30'$   
 $T = 80.00'$   
 $L = 150.90'$   
 $E = 6.50'$

EXTEND CONC. STA. P.C. 60+76.00 TO  
 STA. P.T. 62+55 SEE SECTION 11  
 DWG. NO. 13

P.I. 62+05.77  
 $\Delta = 51^{\circ}51' RT.$

P.I. 16' RT. 71+15.35  
 $\Delta = 17^{\circ}00' L$   
 $D = 21^{\circ}24' 28''$   
 $R = 267.51'$   
 $T = 40.00'$   
 $L = 79.41'$   
 $E = 3.0'$

P.T. 16' RT. 71+55

71+65?

P.T. 12' RT. 67+79

P.I. 67+51.04  
 $\Delta = 18^{\circ}56' L$

P.I. 71+12.35  
 $\Delta = 15^{\circ}53' L$

0+00 DITCH 6"  
 P.I. 72+98.82  
 $\Delta = 5^{\circ}00' R$

P.I. 74+90.27  
 $\Delta = 5^{\circ}00' L$

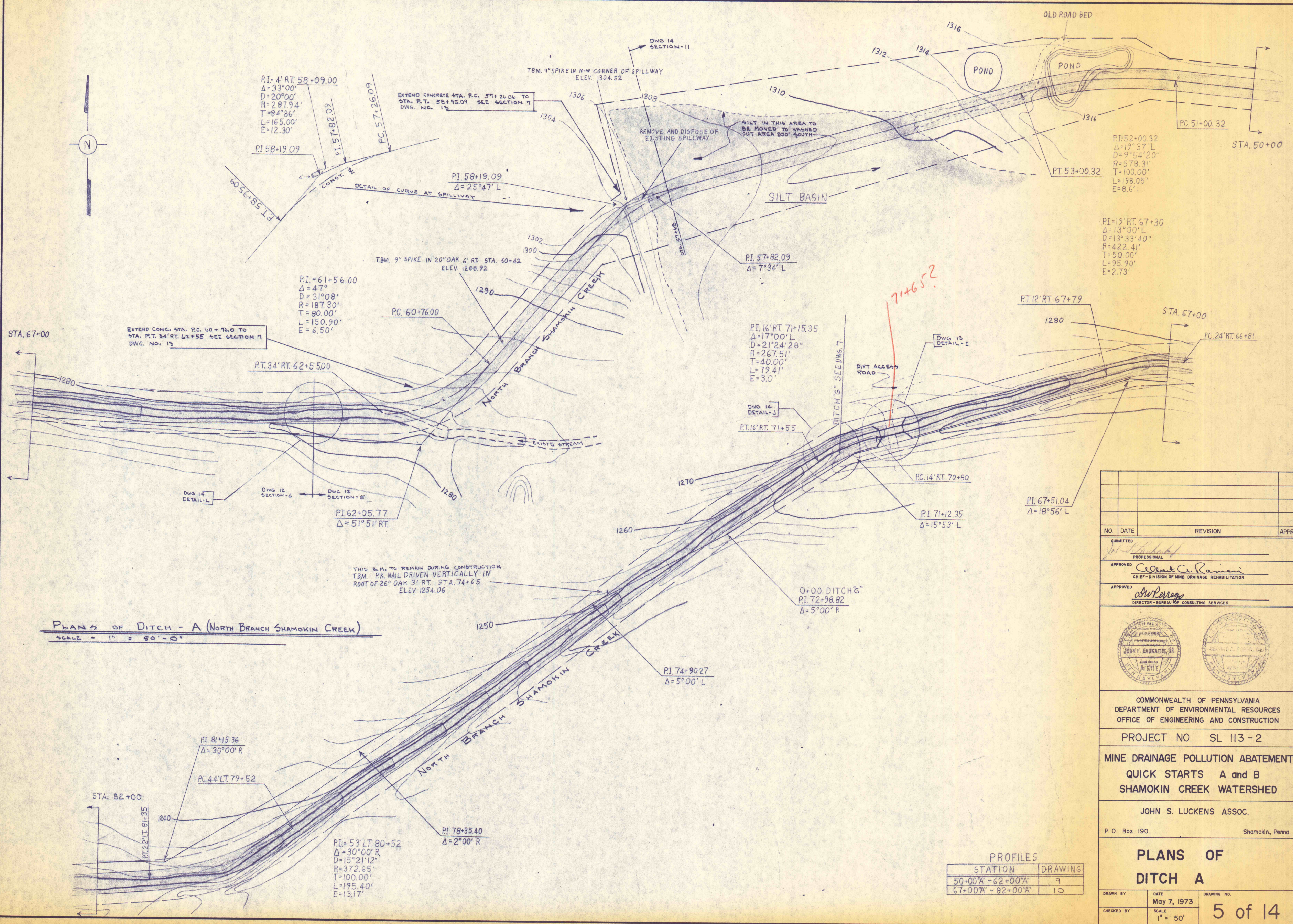
P.I. 81+15.36  
 $\Delta = 30^{\circ}00' R$

P.C. 44' LT. 79+52

P.I. = 53' LT. 80+52  
 $\Delta = 30^{\circ}00' R$   
 $D = 15^{\circ}21' 12''$   
 $R = 372.65'$   
 $T = 100.00'$   
 $L = 195.40'$   
 $E = 13.17'$

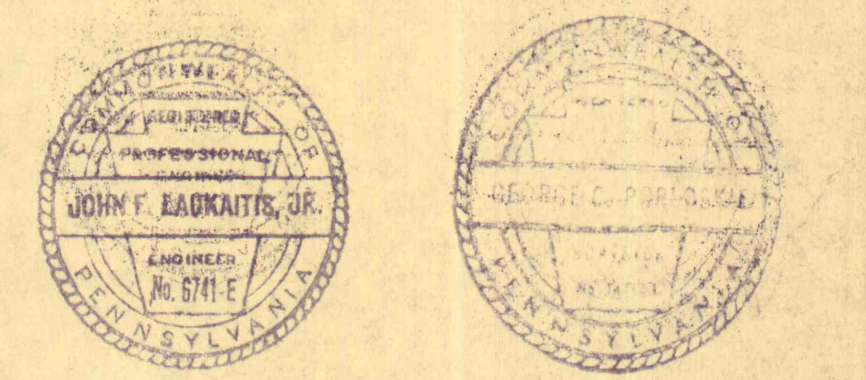
P.I. 78+35.40  
 $\Delta = 2^{\circ}00' R$

**PLANS OF DITCH - A (NORTH BRANCH SHAMOKIN CREEK)**  
 SCALE - 1" = 50'-0"



NO.	DATE	REVISION	APPR.

SUBMITTED  
 APPROVED *Robert C. Ramey*  
 CHIEF - DIVISION OF MINE DRAINAGE REHABILITATION  
 APPROVED *John F. Luckens, Jr.*  
 DIRECTOR - BUREAU OF CONSULTING SERVICES



COMMONWEALTH OF PENNSYLVANIA  
 DEPARTMENT OF ENVIRONMENTAL RESOURCES  
 OFFICE OF ENGINEERING AND CONSTRUCTION  
 PROJECT NO. SL 113-2  
 MINE DRAINAGE POLLUTION ABATEMENT  
 QUICK STARTS A and B  
 SHAMOKIN CREEK WATERSHED  
 JOHN S. LUCKENS ASSOC.  
 P. O. Box 190 Shamokin, Penna.

PROFILES

STATION	DRAWING
50+00'A - 62+00'A	9
67+00'A - 82+00'A	10

**PLANS OF DITCH A**  
 DRAWN BY  
 DATE May 7, 1973  
 SCALE 1" = 50'  
 DRAWING NO. 5 of 14