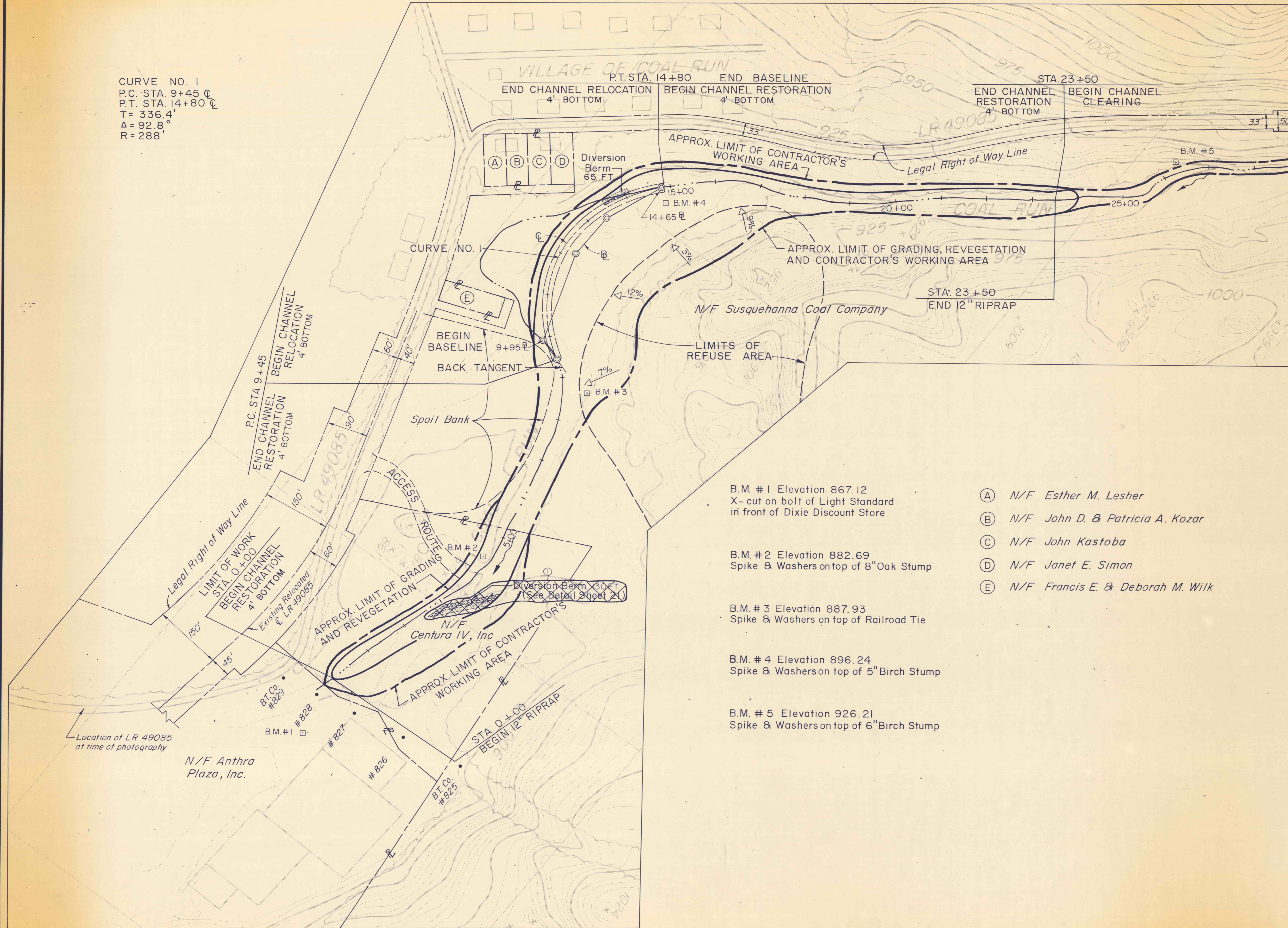
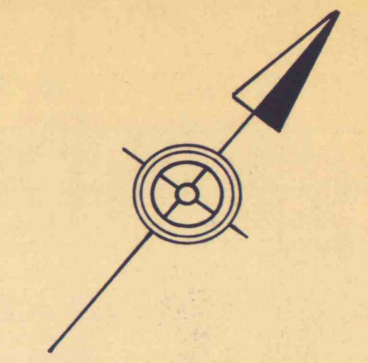


CURVE NO. 1
 P.C. STA. 9+45
 P.T. STA. 14+80
 T = 336.4'
 Δ = 92.8°
 R = 288'



Match to Sheet 4

- B.M. #1 Elevation 867.12
X - cut on bolt of Light Standard
in front of Dixie Discount Store
- B.M. #2 Elevation 882.69
Spike & Washers on top of 8" Oak Stump
- B.M. #3 Elevation 887.93
Spike & Washers on top of Railroad Tie
- B.M. #4 Elevation 896.24
Spike & Washers on top of 5" Birch Stump
- B.M. #5 Elevation 926.21
Spike & Washers on top of 6" Birch Stump

- (A) N/F Esther M. Leshar
- (B) N/F John D. & Patricia A. Kozar
- (C) N/F John Kastoba
- (D) N/F Janet E. Simon
- (E) N/F Francis E. & Deborah M. Wilk

①	6-30-75	Removed Diversion Berm - Sta. 3+00±					
NO	DATE	REVISION					APPR
SUBMITTED							
<i>Richard B. Ulp</i>							
APPROVED							
<i>Robert C. Rammer</i>							
CHIEF, DIVISION OF MINE RECLAMATION							
APPROVED							
<i>Richard B. Ulp</i>							
DIRECTOR - BUREAU OF DESIGN							
COMMONWEALTH OF PENNSYLVANIA DEPARTMENT OF ENVIRONMENTAL RESOURCES OFFICE OF RESOURCES MANAGEMENT							
PROJECT NO. SL 113-5-1							
MINE DRAINAGE POLLUTION ABATEMENT COAL RUN SHAMOKIN CREEK WATERSHED NORTHUMBERLAND COUNTY, PA.							
ERDMAN, ANTHONY, ASSOCIATES Consulting Engineers Camp Hill, Pa. Rochester, N.Y.							
PLAN							
DRAWN BY	GMS	DATE	5-9-75	DRAWING NO.			
CHECKED BY	DHC	SCALE	1" = 100'	3 of 28			