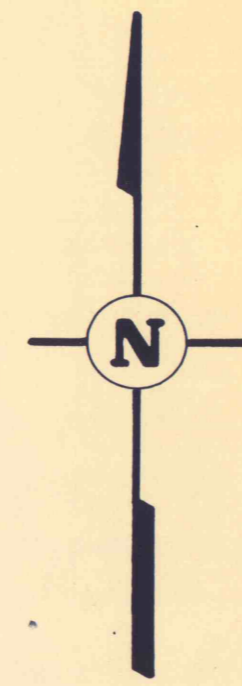
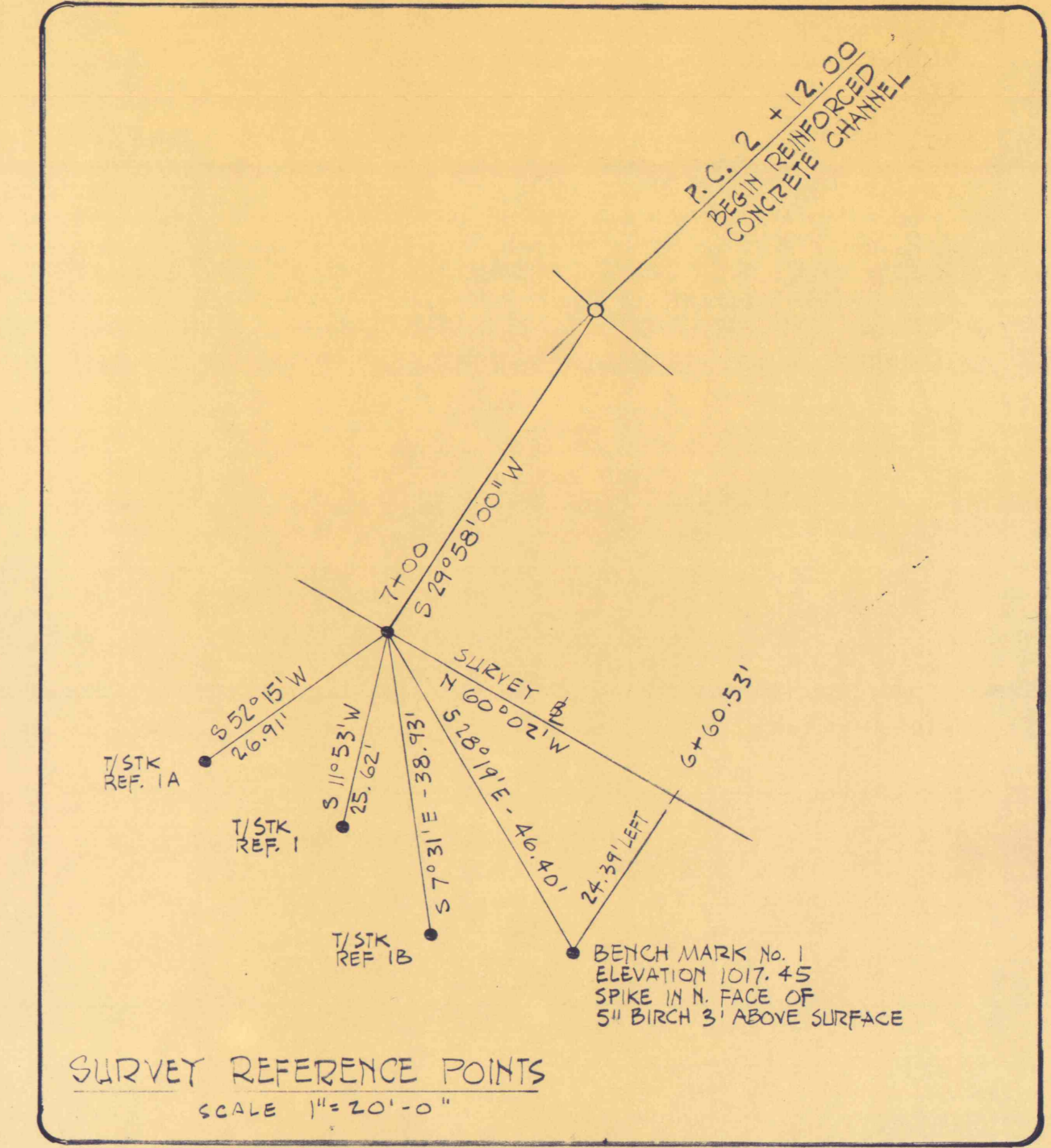


Note:  
See Sheet 6 of 9 for details of placement of rip-rap at areas of concentrated side flows.



LIMIT OF CONTRACTOR'S WORK AREA.

Note:  
Trees shall be planted along both sides of channel in accordance with specifications, S.D. # 19.



LEGEND

- LIMIT OF GRADING
- LIMIT OF CONTRACTOR'S WORKING AREA
- LIMIT OF REVEGETATION

NO.	DATE	REVISION	APPR.
SUBMITTED <i>Harvey P. Cowley</i>			
APPROVED <i>Robert A. Roman</i> CHIEF - DIVISION OF MINE RECLAMATION			
APPROVED <i>Stanton</i> DIRECTOR - BUREAU OF DESIGN			
COMMONWEALTH OF PENNSYLVANIA DEPARTMENT OF ENVIRONMENTAL RESOURCES OFFICE OF RESOURCES MANAGEMENT			
PROJECT NO. SL 126-1-5			
MINE DRAINAGE POLLUTION ABATEMENT SWATARA CREEK WATERSHED UPPER SWATARA CREEK & POLLY'S RUN REILLY TWP. SCHUYLKILL CO., PA.			
NICHOLAS-COWLEY-BROSCH ASSOC., INC. Consulting Engineers 3300 North Third St. Harrisburg, Pa.			
<b>UPPER SWATARA CREEK PART I</b>			
DRAWN BY <b>BEN</b>	DATE <b>Jan. 11, 1974</b>	DRAWING NO. <b>5 of 9</b>	
CHECKED BY <b>HPC</b>	SCALE <b>1" = 20'</b>		