

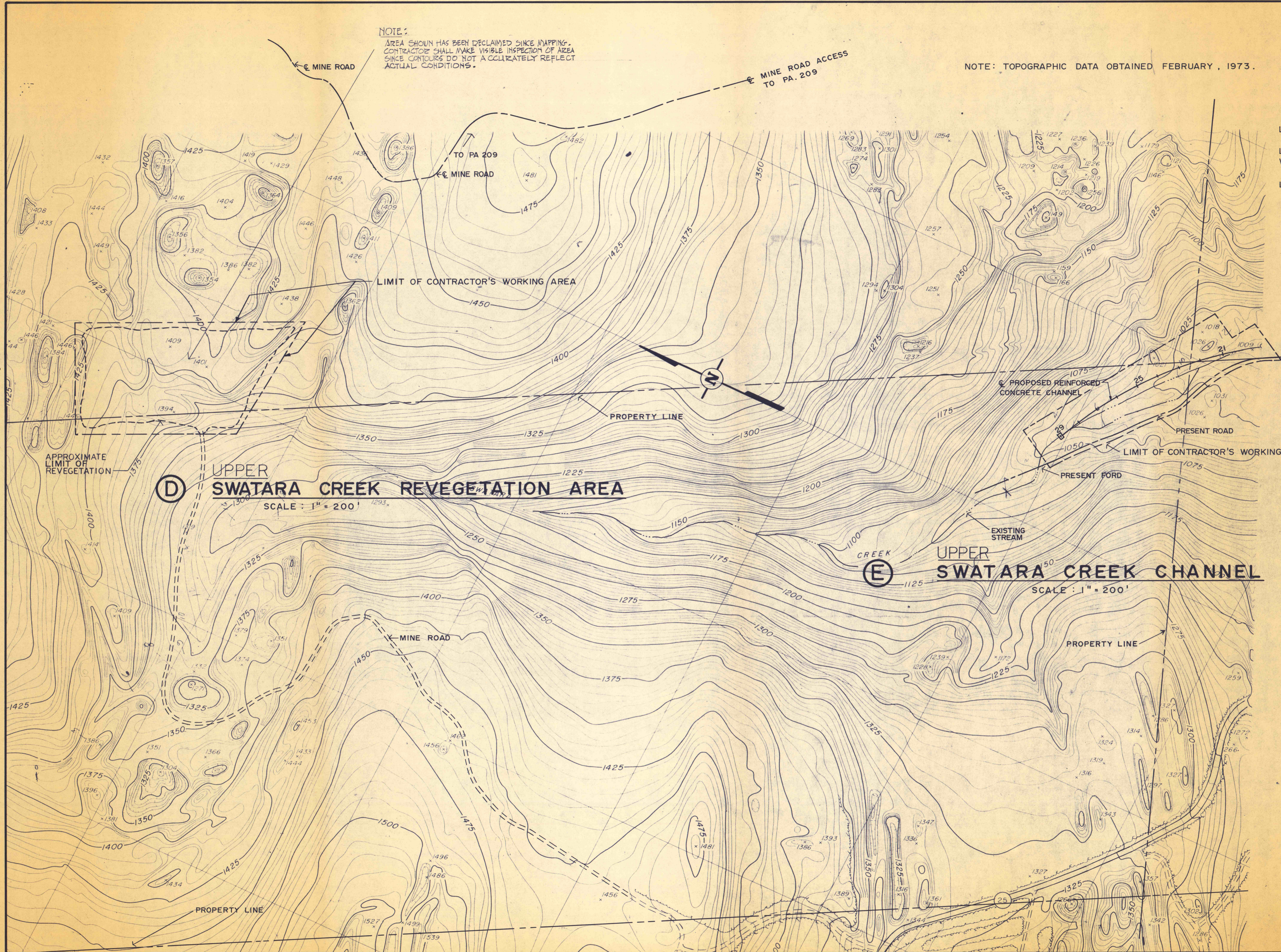
NOTE:
 AREA SHOWN HAS BEEN DECLAIMED SINCE MAPPING.
 CONTRACTOR SHALL MAKE VISIBLE INSPECTION OF AREA
 SINCE CONTOURS DO NOT ACCURATELY REFLECT
 ACTUAL CONDITIONS.

NOTE: TOPOGRAPHIC DATA OBTAINED FEBRUARY, 1973.

LEGEND

- LIMIT OF GRADING _____
- LIMIT OF CONTRACTOR'S WORKING AREA - - - - -
- LIMIT OF REVEGETATION - - - - -

NOTE:
 FOR PLAN & DETAILS OF PROPOSED
 REINFORCED CONCRETE CHANNEL
 SEE SHEETS 5 OF 9 AND 6 OF 9.



NO.	DATE	REVISION	APPR.
SUBMITTED <i>Harvey P. Cowley</i> PROFESSIONAL			
APPROVED <i>Albert A. Roman</i> CHIEF - DIVISION OF MINE RECLAMATION			
APPROVED <i>Nicholas-Cowley-Brosch</i> DIRECTOR - BUREAU OF DESIGN			
COMMONWEALTH OF PENNSYLVANIA DEPARTMENT OF ENVIRONMENTAL RESOURCES OFFICE OF RESOURCES MANAGEMENT			
PROJECT NO. SL 126-1-5 MINE DRAINAGE POLLUTION ABATEMENT SWATARA CREEK WATERSHED UPPER SWATARA CREEK & POLLY'S RUN REILLY TWP. SCHUYLKILL CO., PA.			
NICHOLAS-COWLEY-BROSCH ASSOC., INC. Consulting Engineers 3300 North Third St. Harrisburg, Pa.			
UPPER SWATARA CREEK PLAN			
DRAWN BY BEN	DATE Jan. 11, 1974	DRAWING NO. 4 of 9	
CHECKED BY HPC	SCALE 1" = 200'		