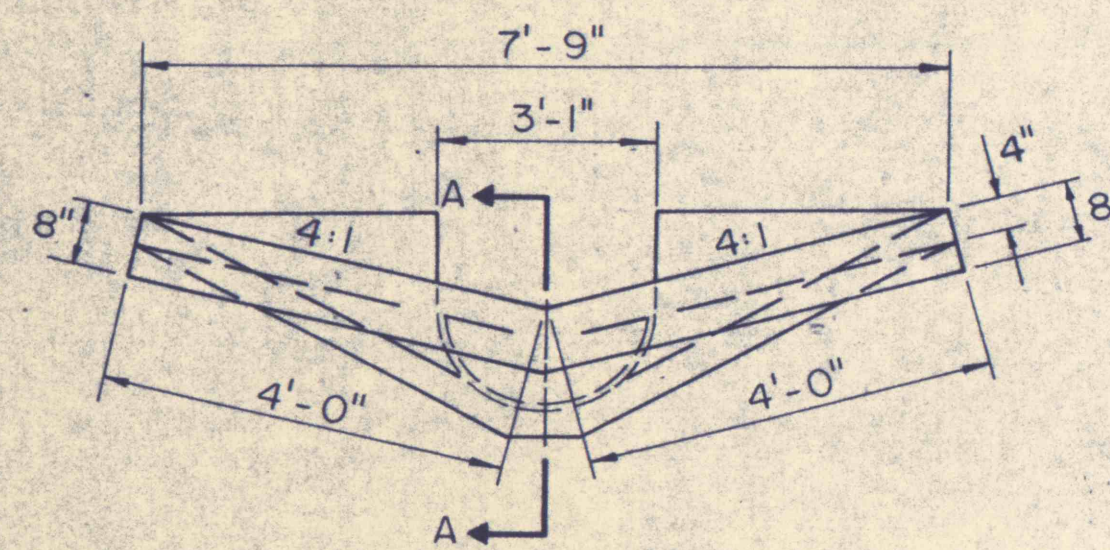
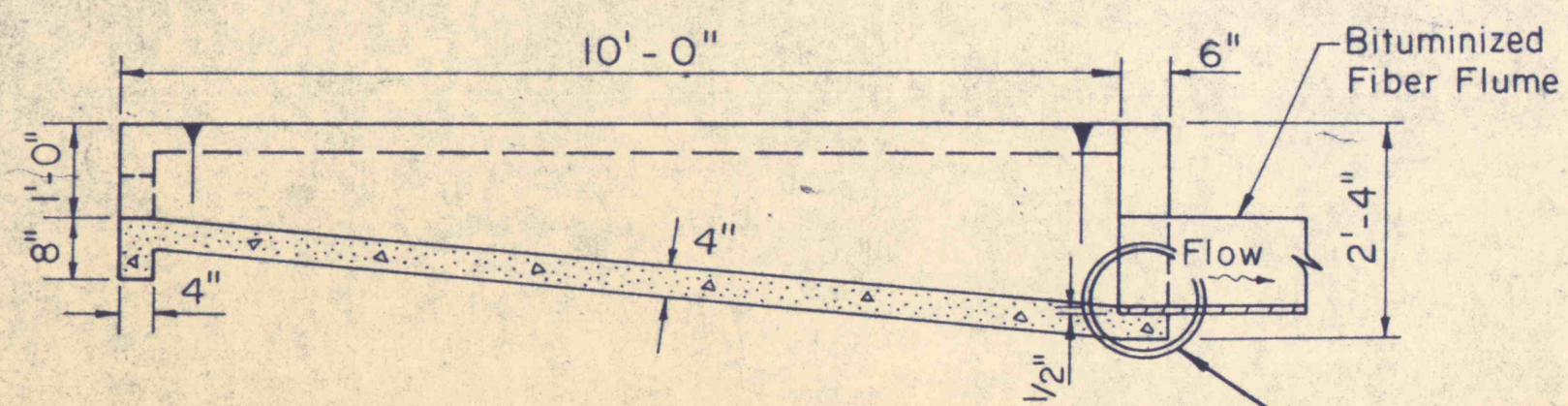


PLAN VIEW



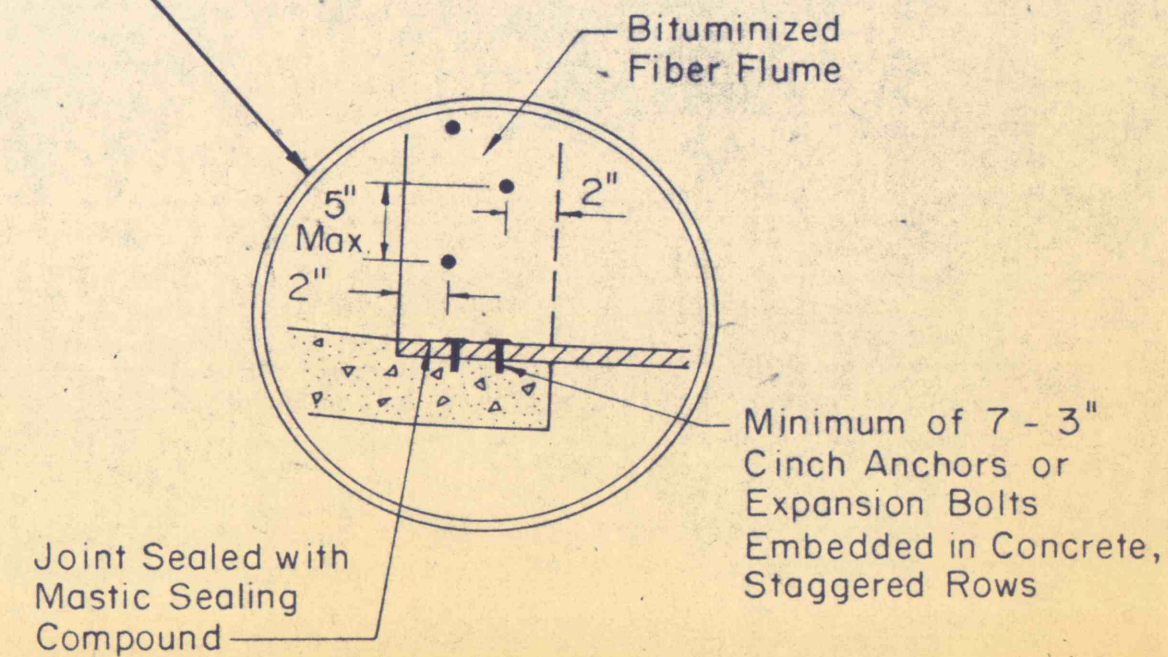
FRONT VIEW



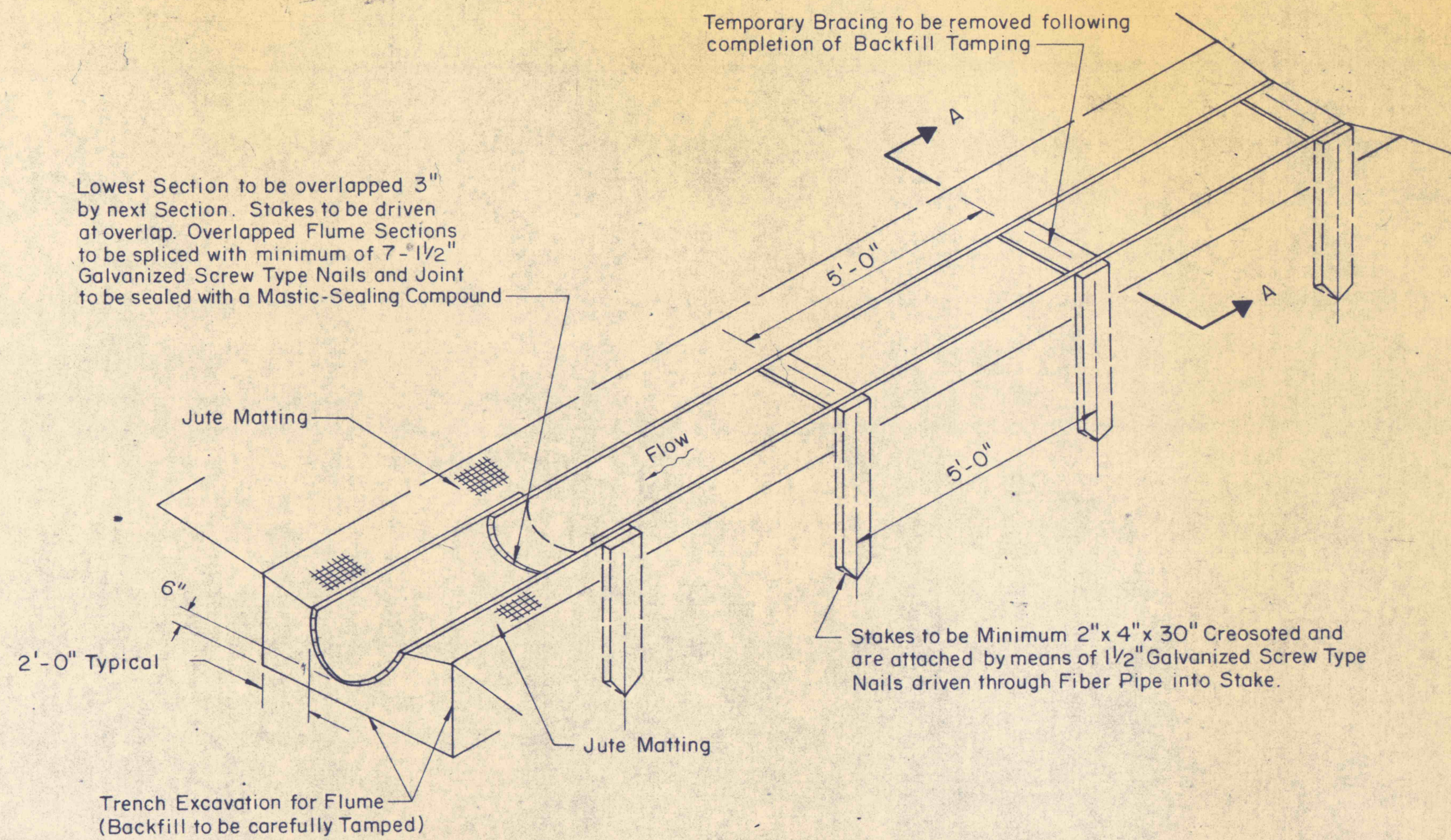
SECTION A-A

CONCRETE PAVED SWALE
FLUME ENTRANCE

SCALE: 1/2" = 1'-0"

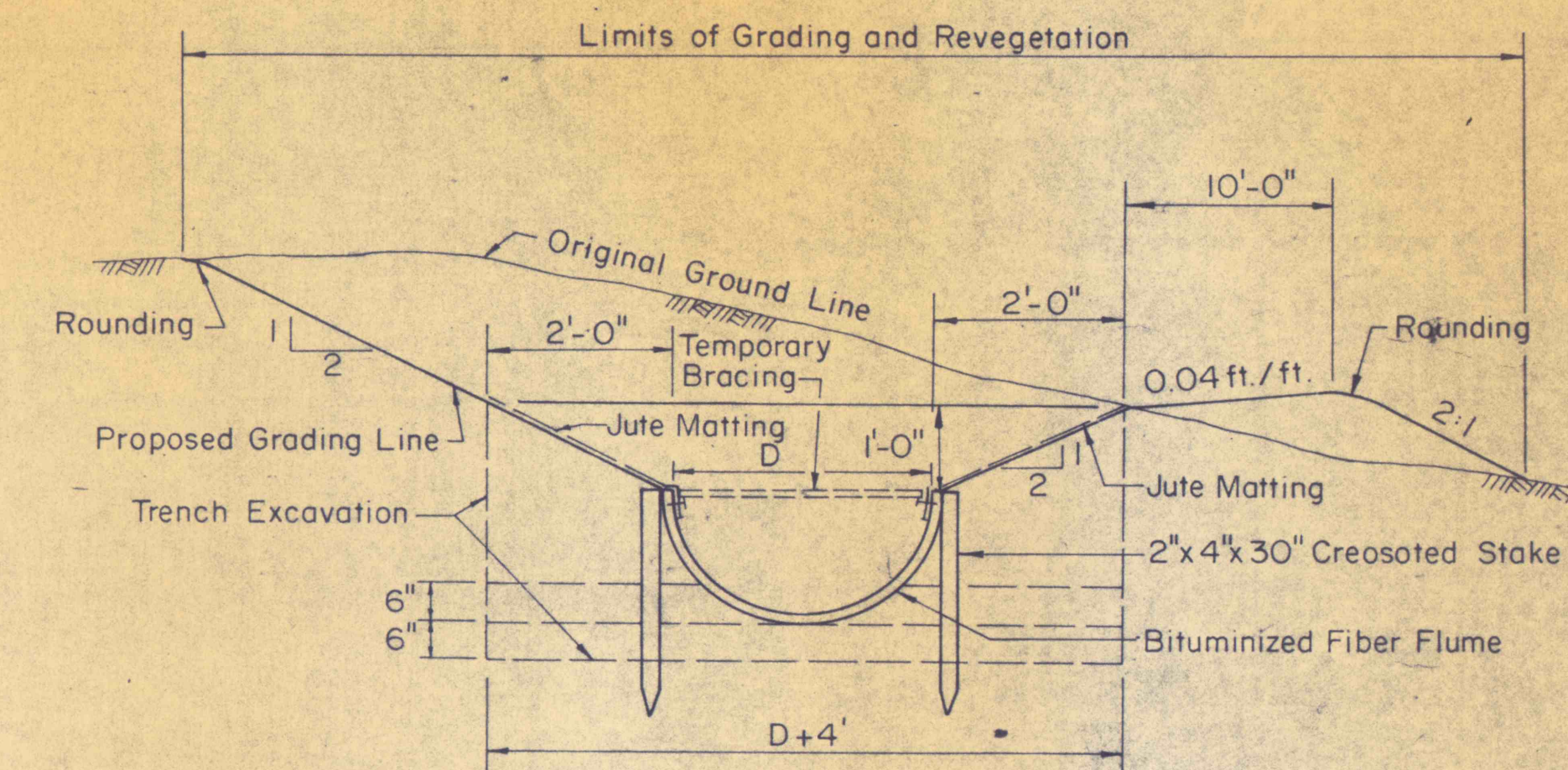


DETAIL
NO SCALE



INSTALLATION OF HALF SECTION BITUMINIZED FIBER FLUME

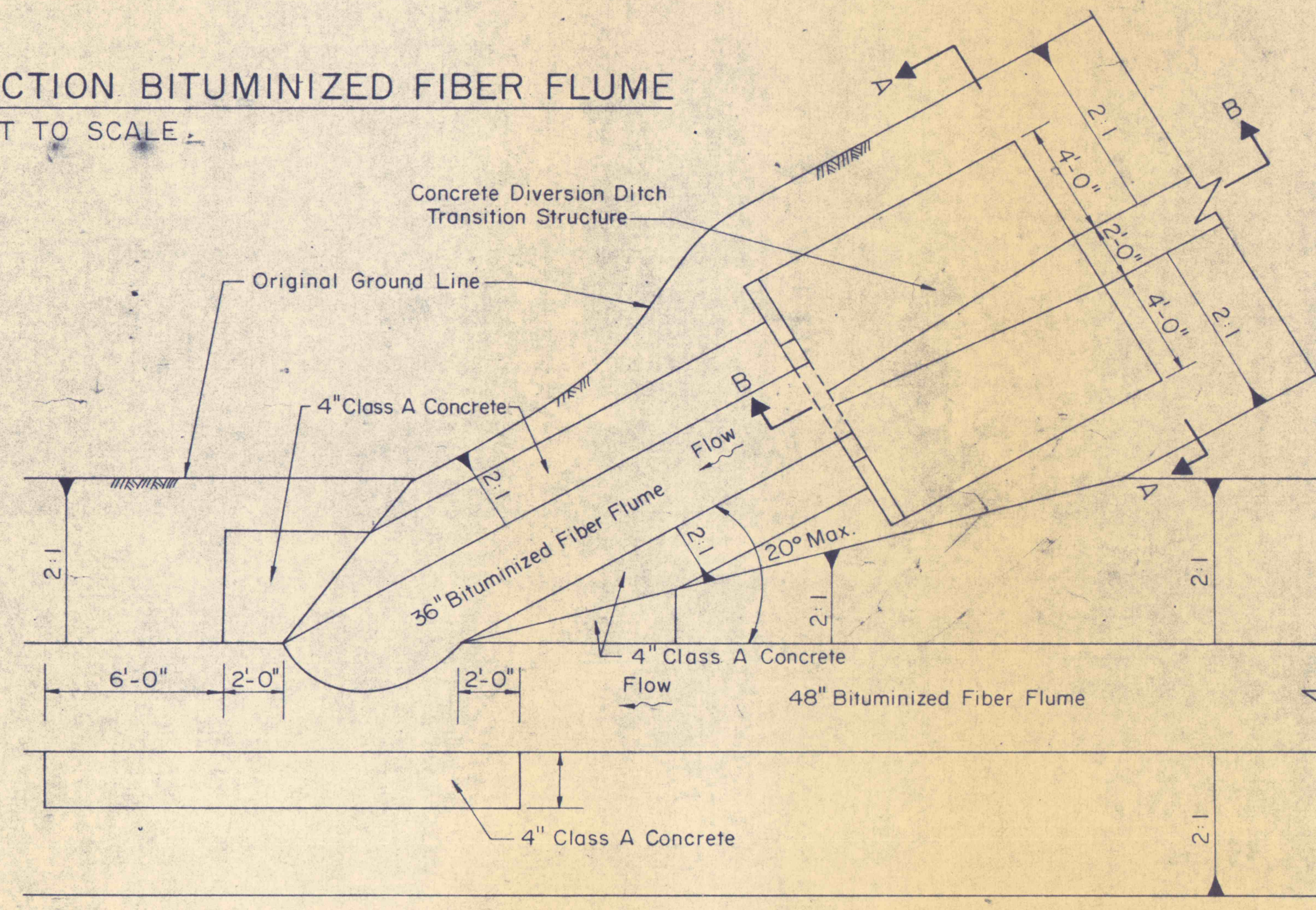
NOT TO SCALE



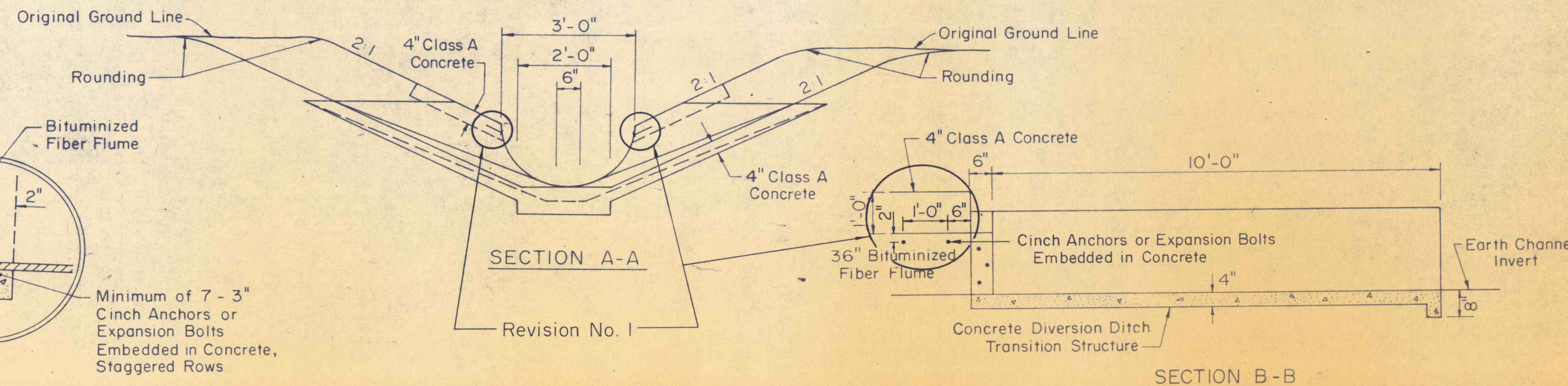
SECTION A-A
NOT TO SCALE

CONSTRUCTION SEQUENCE

1. Excavate to limits of trench excavation.
2. Fill and tamp first two layers.
3. Re-excavate to fit pipe periphery.
4. Install half-section bracing and stakes
5. Backfill and tamp in 6" layers to grade line



PLAN VIEW



SECTION A-A

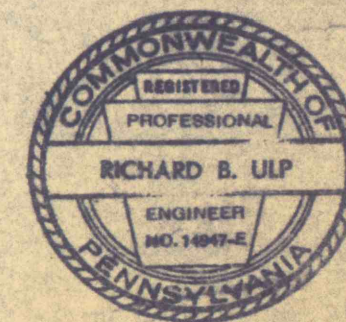
Revision No. 1

SECTION B-B

DIVERSION DITCH SIDE ENTRANCE TO BITUMINIZED FIBER FLUME

NOT TO SCALE

1	3-2-76	Added Cinch Anchors or Expansion Bolts to Detail	HC
NO	DATE	REVISION	APPR.
SUBMITTED			
<i>Richard B. Ulp</i>			
APPROVED			
<i>Robert C. Paner</i>			
CHIEF - DIVISION OF MINE RECLAMATION			
APPROVED			
<i>Anthony Erdman</i>			
DIRECTOR - BUREAU OF DESIGN			



COMMONWEALTH OF PENNSYLVANIA
DEPARTMENT OF ENVIRONMENTAL RESOURCES
OFFICE OF RESOURCES MANAGEMENT

PROJECT NO. SL 113-5-1

MINE DRAINAGE POLLUTION ABATEMENT
COAL RUN
SHAMOKIN CREEK WATERSHED
NORTHUMBERLAND COUNTY, PA.

ERDMAN, ANTHONY, ASSOCIATES
Consulting Engineers
Camp Hill, Pa. Rochester, N.Y.

FIBER FLUME DETAILS

DRAWN BY	DATE	DRAWING NO.
GMS	5-9-75	23 of 28
CHECKED BY	SCALE	
DHC	A.S. SHOWN	