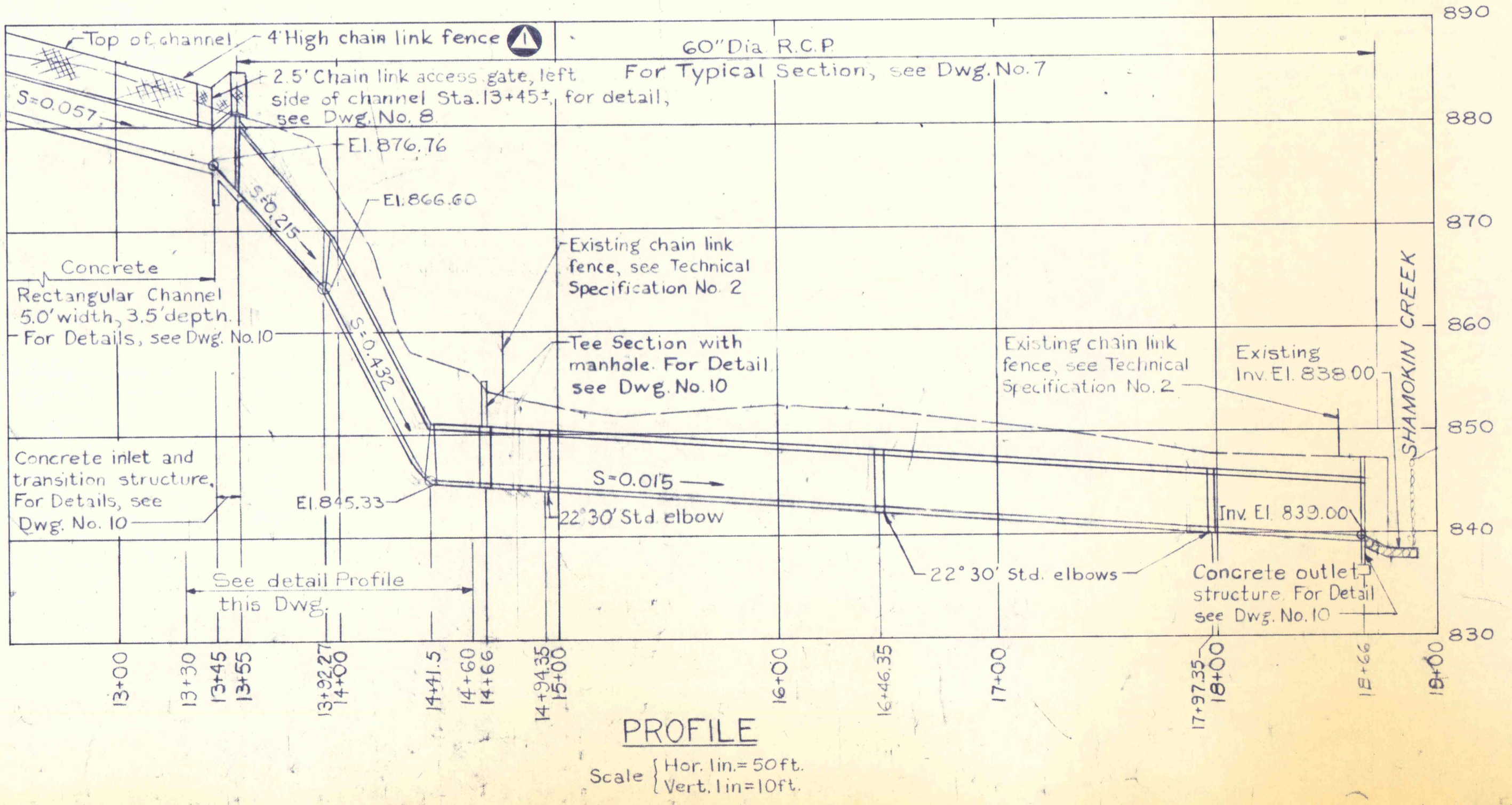
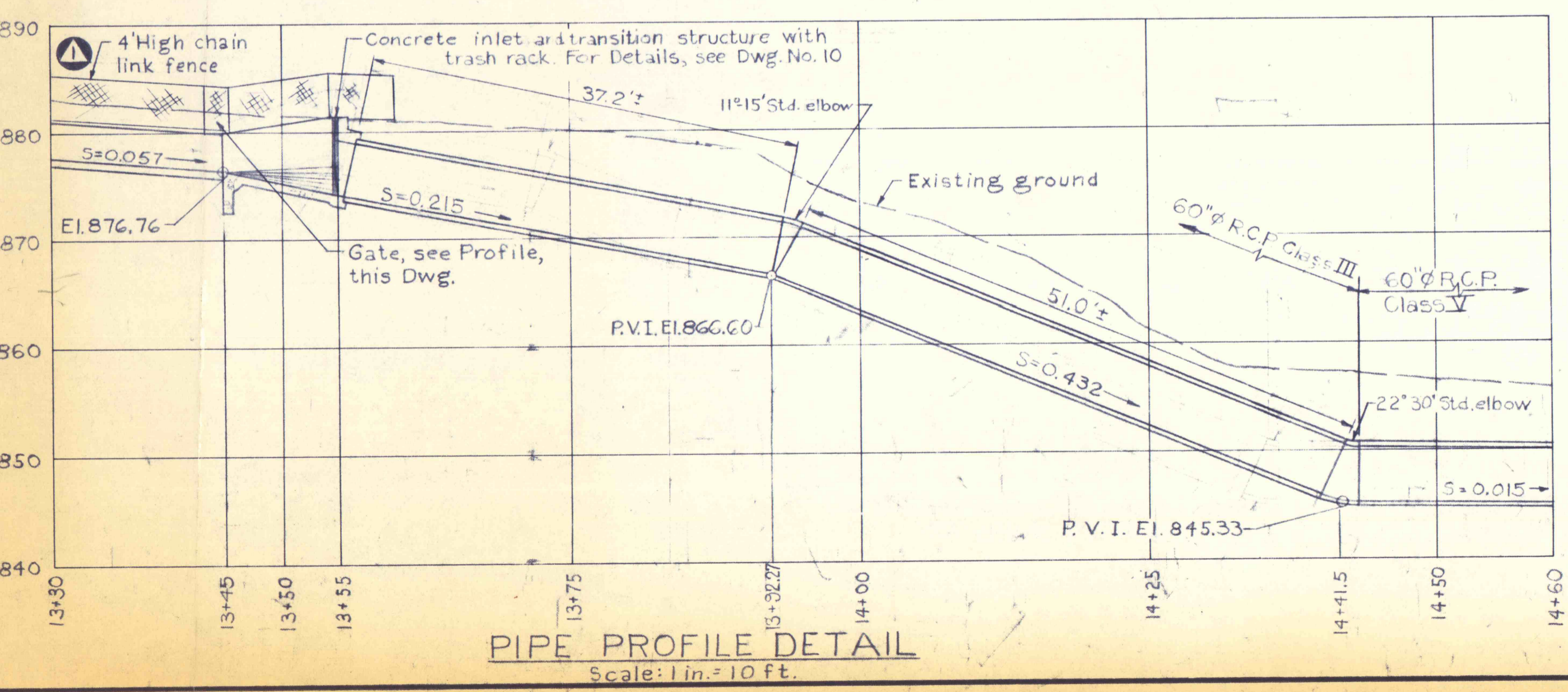
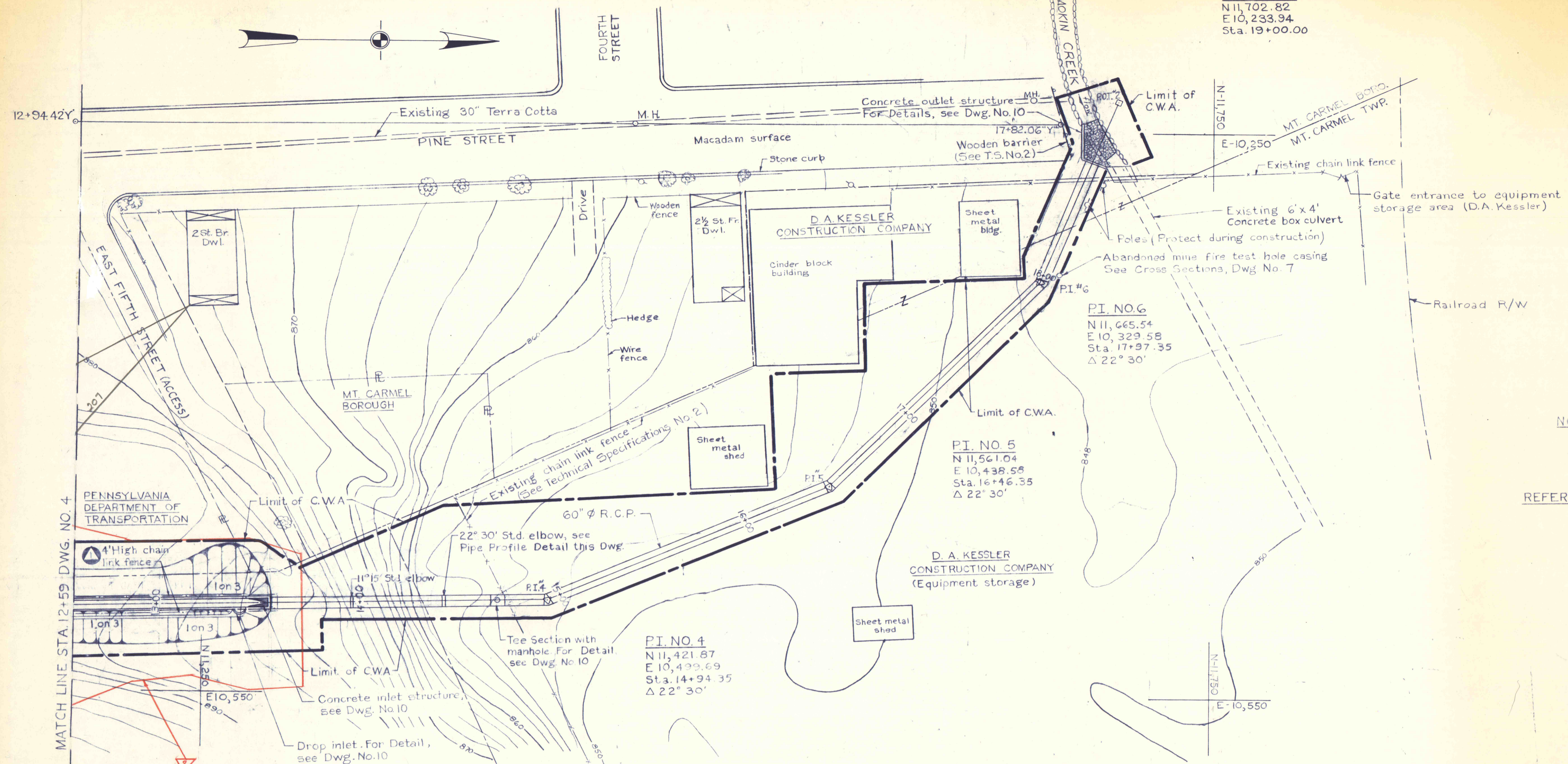


POT. NO. 2  
 N 11,702.82  
 E 10,233.94  
 Sta. 19+00.00

TRAVERSE DATA

Traverse Station	Coordinates	
	North	East
12+94.42Y	11,186.04	10,247.29
17+82.06	11,673.61	10,245.68



NOTES:  
 1. For Concrete Notes, See Dwg. No. 8.

REFERENCES:  
 1. Cross Sections --- Dwg. No. 7  
 2. Details --- Dwg. No. 10

▲ LIMIT OF GRADING AND REVEGETATION

NO.	DATE	REVISION	APPR.
SUBMITTED: <i>H. Rao</i>			
PROJECT CO-ORDINATOR			
APPROVED: <i>Albert C. Ranieri</i>			
CHIEF - DIVISION OF MINE RECLAMATION			
APPROVED: <i>D. Kessler</i>			
DIRECTOR - BUREAU OF DESIGN			
COMMONWEALTH OF PENNSYLVANIA DEPARTMENT OF ENVIRONMENTAL RESOURCES OFFICE OF RESOURCES MANAGEMENT			
CONTRACT NO. SL 113-3-1			
MINE DRAINAGE POLLUTION ABATEMENT MOUNT CARMEL SHAMOKIN CREEK WATERSHED NORTHUMBERLAND CO., PA.			
PLAN AND PROFILE			
DRAWN BY: <i>L.C.</i>	DATE: 6-12-75	DRAWING NO. 5 of 10	
CHECKED BY: <i>E.C.</i>	SCALE: As shown		