

TRAVERSE DATA

Traverse Station	Coordinates	
	North	East
5+70.23 Y	10,538.02	10,509.35
8+23.68 Y	10,791.36	10,501.93
9+28.75 Y	10,885.89	10,456.05
12+94.42 Y	11,186.04	10,247.20

BENCH MARK

No.	Elevation	Location and description
1	920.40	Top of concrete headwall. Traverse Sta. 8+16.5, 4+0 Left.
2	900.35	6" DW Edw. INLET CORNER NW CORNER DW Edw.
3	892.34	OUTLET Co. R.C.P.

NOTES:

1. For Concrete Notes, see Dwg. No. 8.

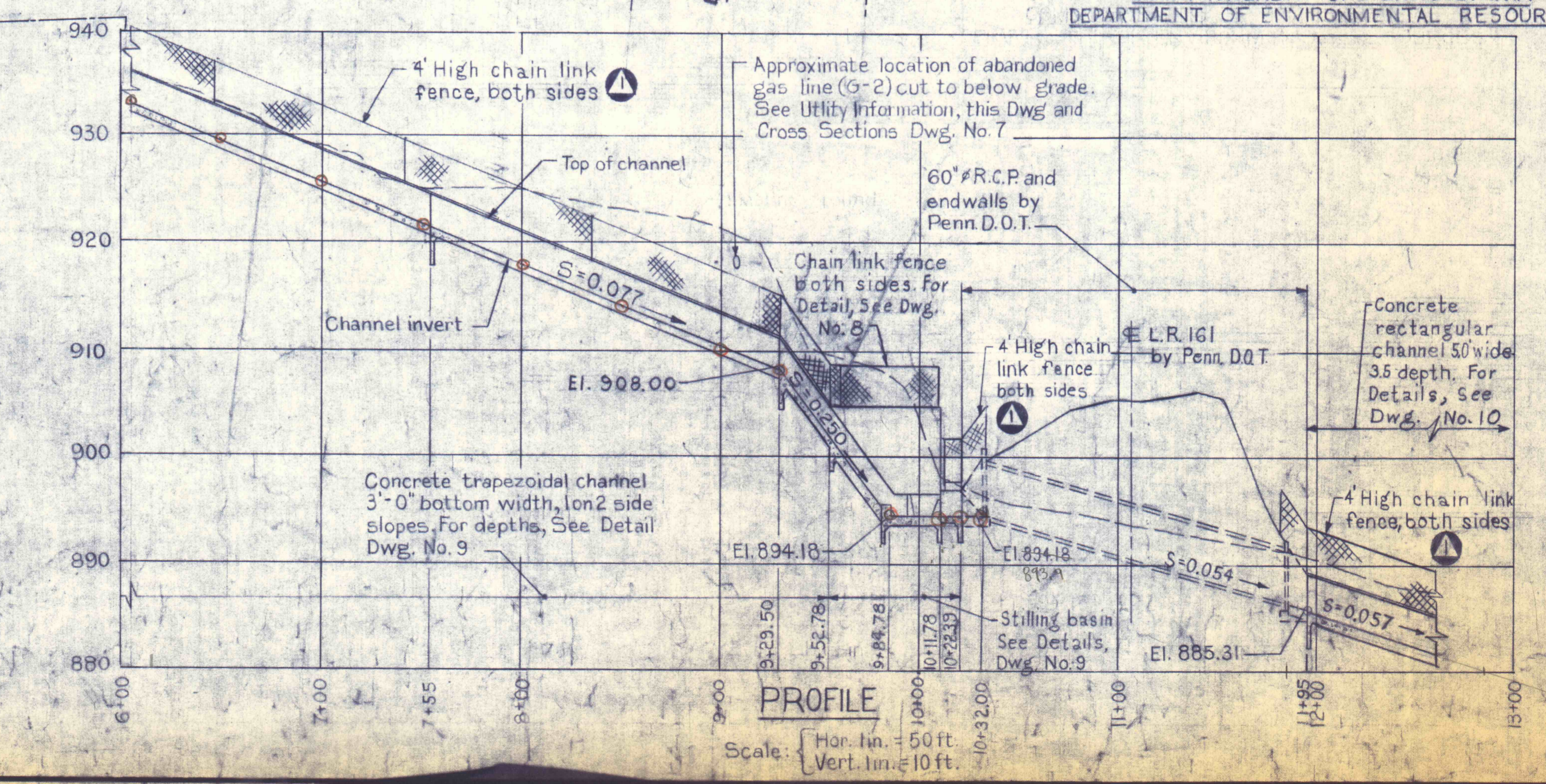
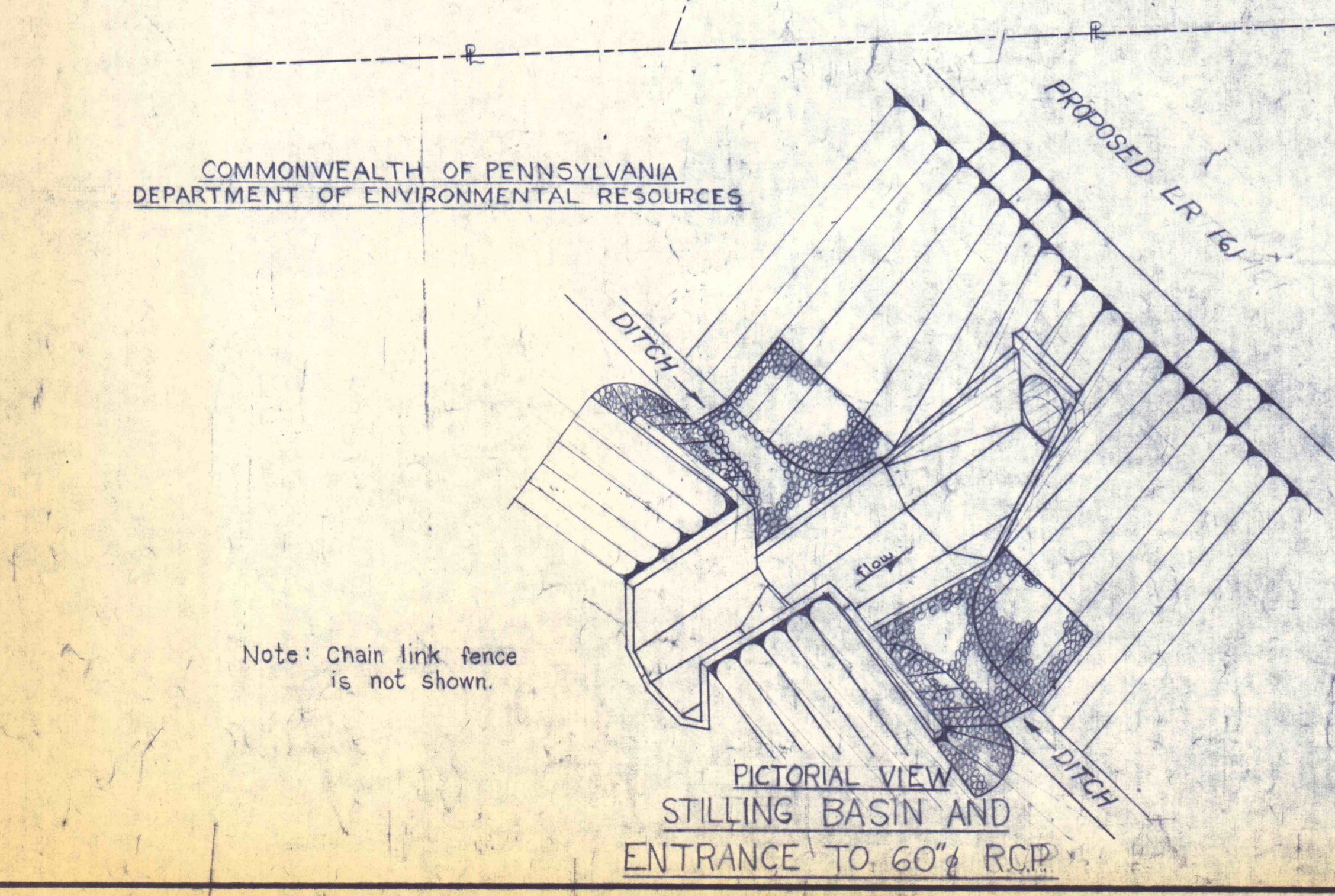
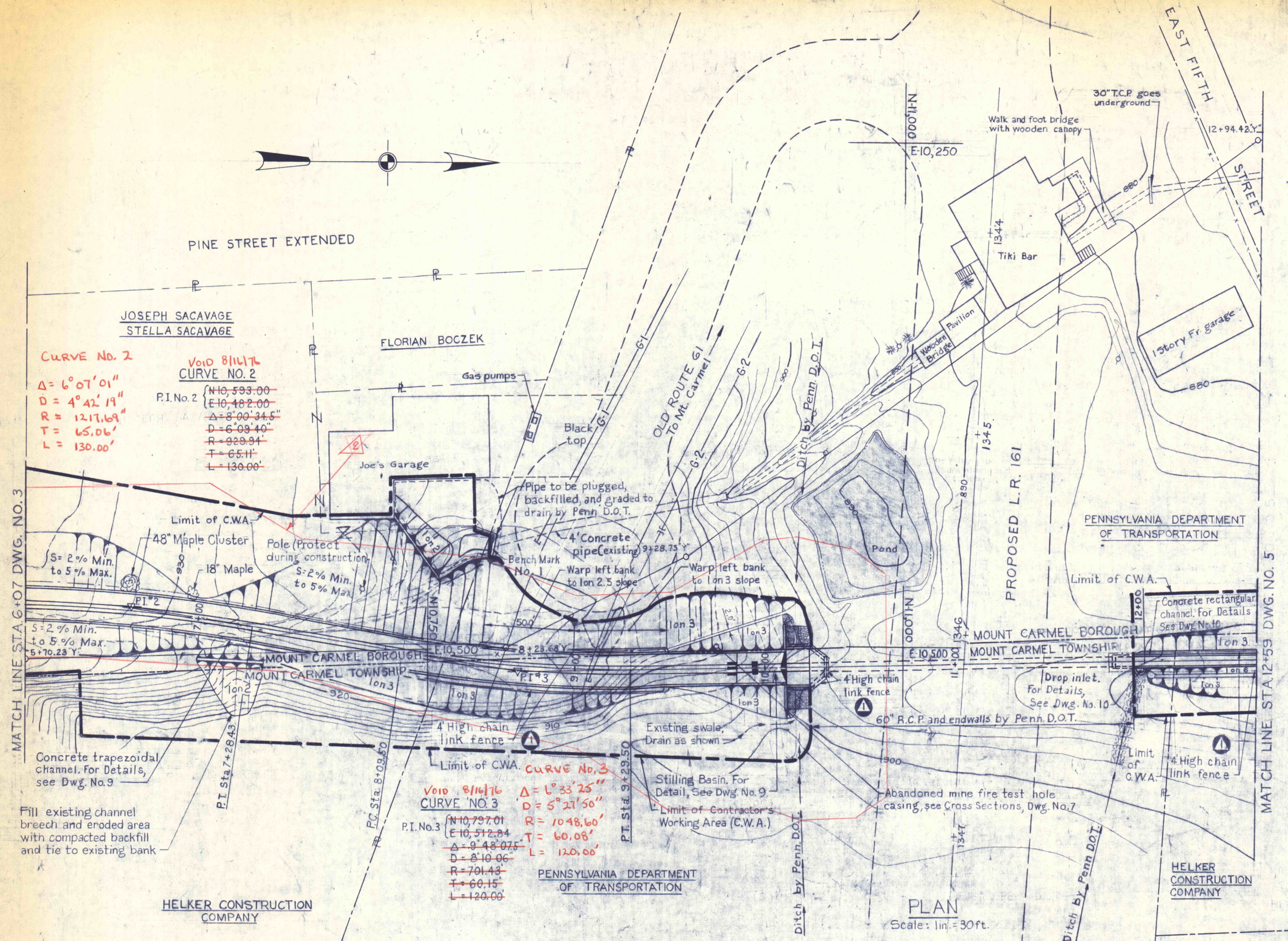
REFERENCES:

1. Cross Sections Dwg. Nos. 6 and 7.
2. Details Dwg. Nos. 9 and 10.

UTILITY INFORMATION

Designation	Type	User
G-1	High pressure gas	Mount Carmel Gas Company Manager A.J. Patrick 117 N. Oak St. Mt Carmel, Penna. 17851 Phone: 717-339-4290
G-2	Low pressure gas	

Limit of Grading & Revegetation



9 Apr 76 Add chain link fence

NO.	DATE	REVISION	APPR.

SUBMITTED: *R.R. Rao*
PROJECT CO-ORDINATOR

APPROVED: *Albert A. Ranieri*
CHIEF - DIVISION OF MINE RECLAMATION

APPROVED: *Bob Penney*
DIRECTOR - BUREAU OF DESIGN

COMMONWEALTH OF PENNSYLVANIA
DEPARTMENT OF ENVIRONMENTAL RESOURCES

COMMONWEALTH OF PENNSYLVANIA
DEPARTMENT OF ENVIRONMENTAL RESOURCES
OFFICE OF RESOURCES MANAGEMENT

CONTRACT NO. SL 113-3-1

MINE DRAINAGE POLLUTION ABATEMENT
MOUNT CARMEL
SHAMOKIN CREEK WATERSHED
NORTHUMBERLAND CO., PA.

PLAN AND PROFILE

DRAWN BY: *L.J.C.* DATE: 6-10-75 DRAWING NO.: 4 of 10
 CHECKED BY: *ECR* SCALE: As shown