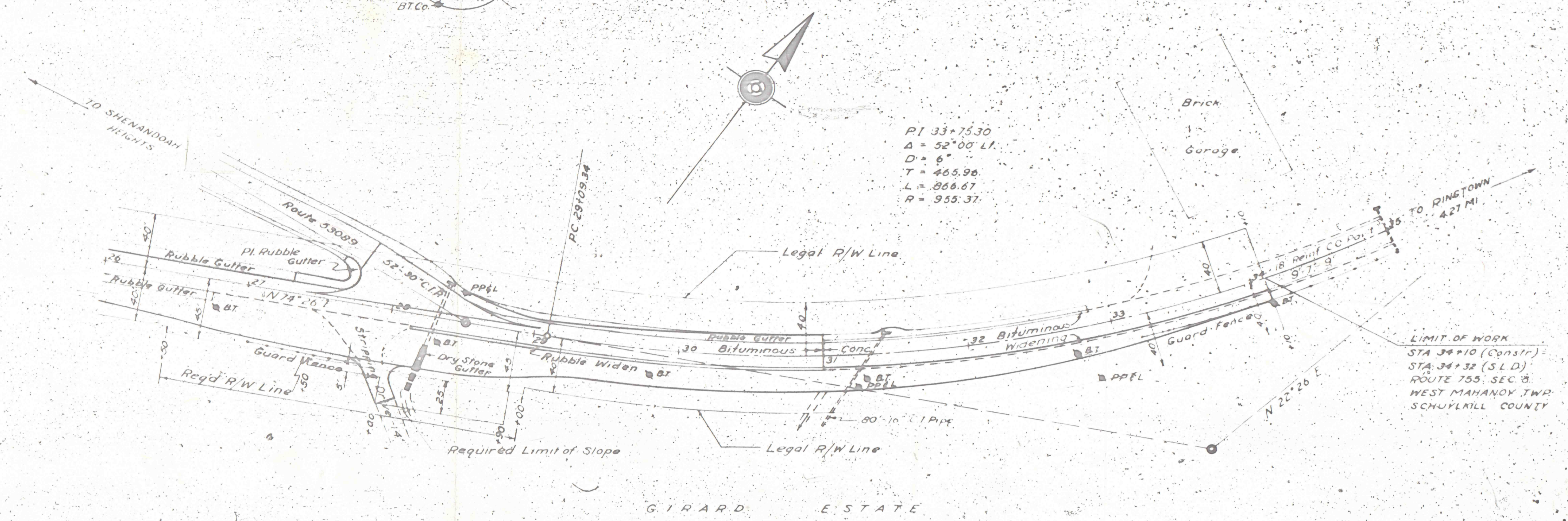
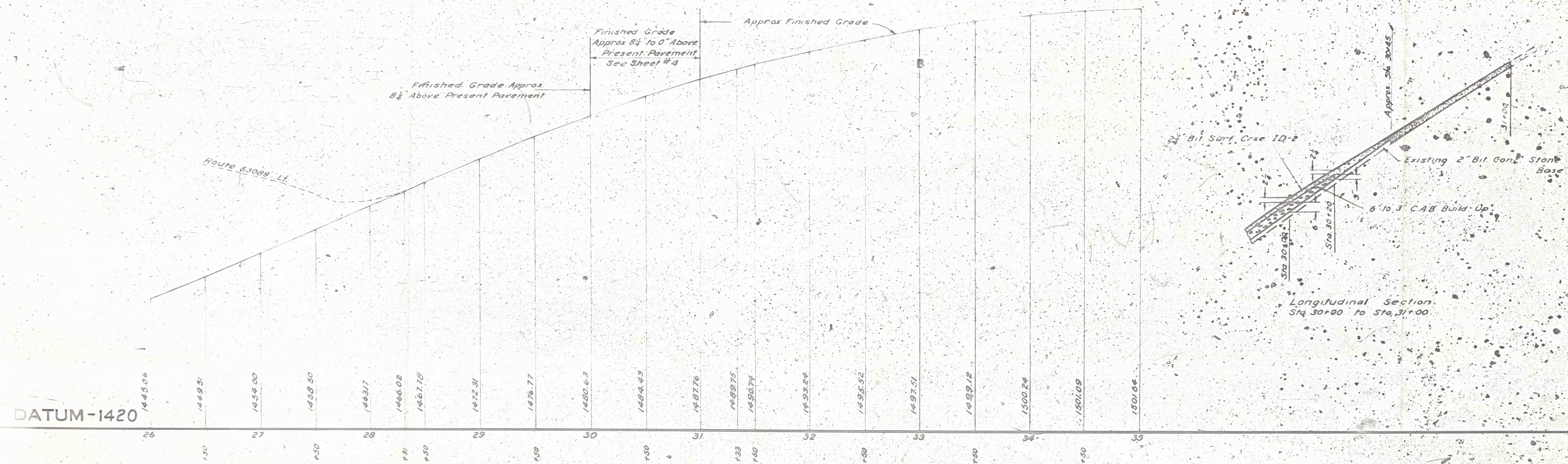


$PI\ 33+75.30$
 $\Delta = 52^{\circ}00' LI$
 $D = 6'$
 $T = 465.96$
 $L = 866.67$
 $R = 955.37$



LIMIT OF WORK
 STA 30+10 (Constr)
 STA 34+32 (S.L.D.)
 ROUTE 755, SEC. 8,
 WEST MAHANoy TWP,
 SCHUYLKILL COUNTY

GIRARD ESTATE



DISTRICT	COUNTY	ROUTE	BL.
5	SCHUYLKILL	755	3

WEST MAHANoy TOWNSHIP

REQUIRED L.

- $20\ 24\ 24\ 24$
 $20\ 24\ 24\ 24$
 $20\ 24\ 24\ 24$
- $20\ 24\ 24\ 24$
 $20\ 24\ 24\ 24$
 $20\ 24\ 24\ 24$
- $20\ 24\ 24\ 24$
 $20\ 24\ 24\ 24$
 $20\ 24\ 24\ 24$
- $20\ 24\ 24\ 24$
 $20\ 24\ 24\ 24$
 $20\ 24\ 24\ 24$
- $20\ 24\ 24\ 24$
 $20\ 24\ 24\ 24$
 $20\ 24\ 24\ 24$

Approx Sta 30+45 to Sta 31+00
 Remove Existing Bituminous