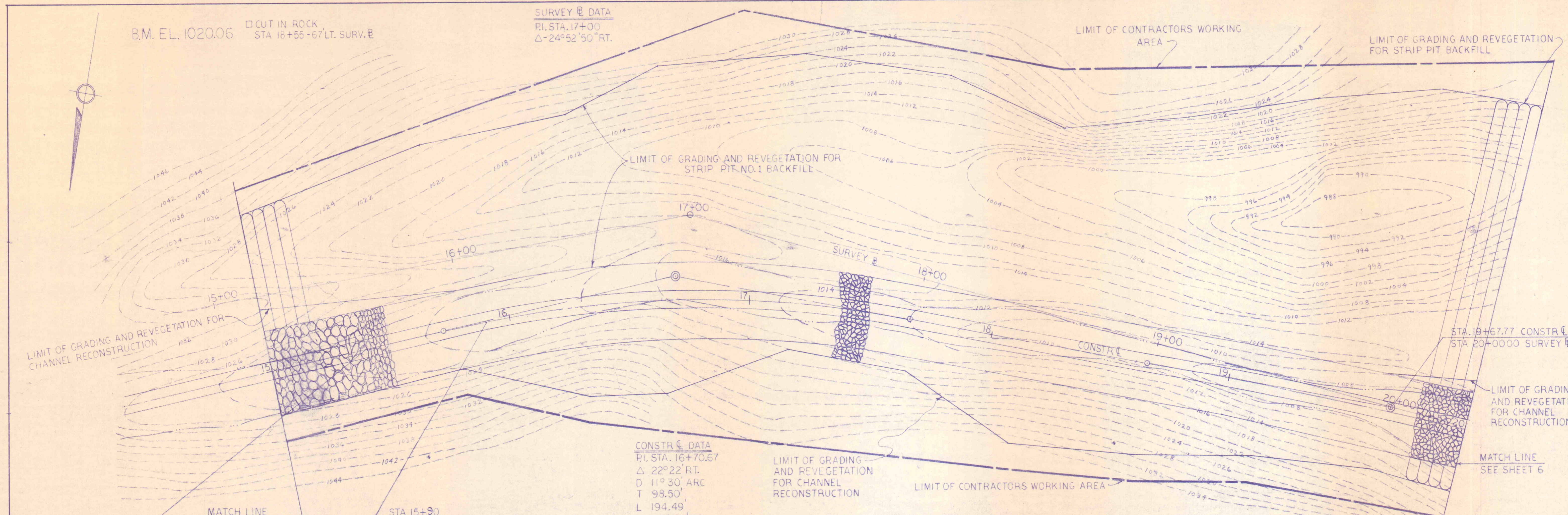


B.M. EL. 1020.06 □ CUT IN ROCK
STA 16+55-67 LT. SURV. E

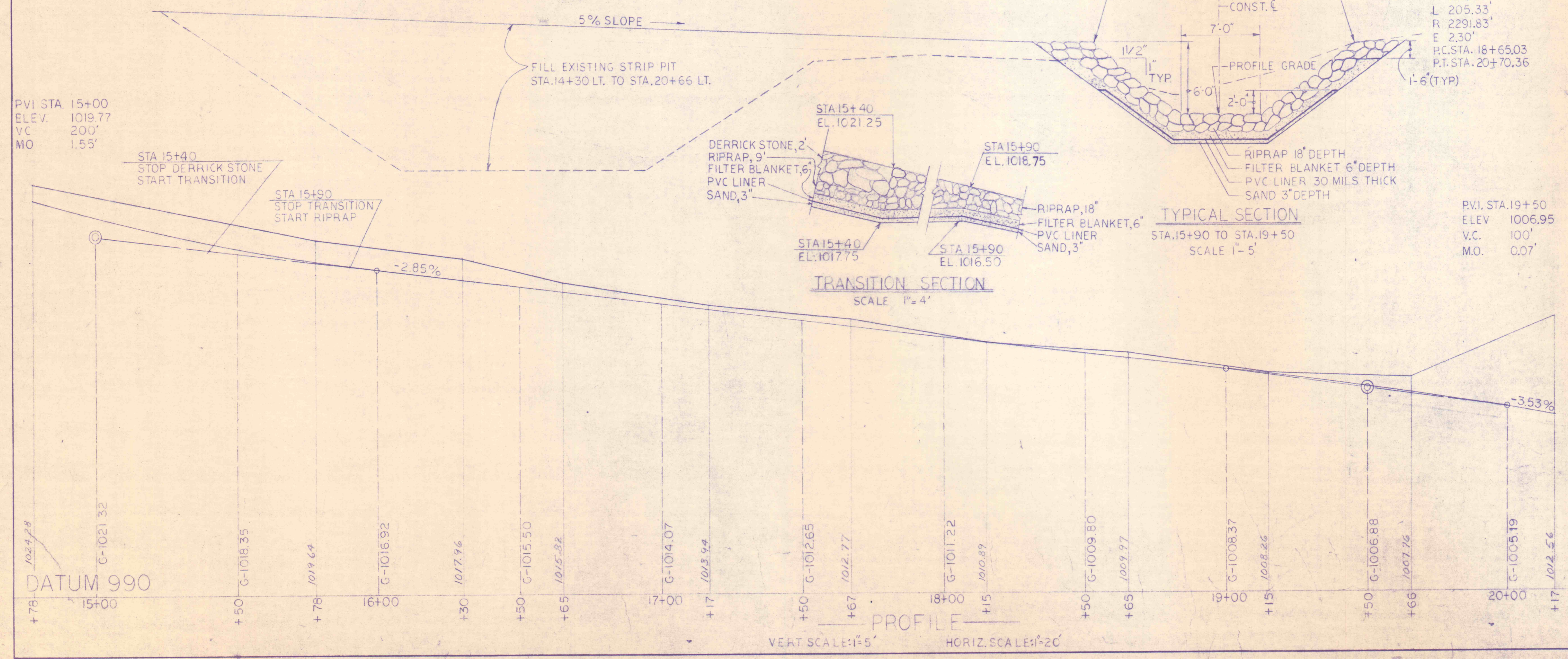
SURVEY E DATA
 P.I. STA. 17+00
 $\Delta = 24^\circ 52' 50''$ RT.



CONSTR. C DATA
 P.I. STA. 16+70.67
 $\Delta = 22^\circ 22'$ RT.
 D 119' 30" ARC
 T 98.50'
 L 194.49'
 R 498.22'
 E 9.64'
 P.C. STA. 15+72.17
 P.T. STA. 17+66.66

CONSTR. C DATA
 P.I. STA. 19+67.77
 $\Delta = 5^\circ 08'$ RT
 D 2° 30' ARC
 T 102.74'
 L 205.33'
 R 2291.83'
 E 2.30'
 P.C. STA. 18+65.03
 P.T. STA. 20+70.36

PLAN
 SCALE: 1" = 20'



TRANSITION SECTION
 SCALE 1" = 4'

TYPICAL SECTION
 STA. 15+90 TO STA. 19+50
 SCALE 1" = 5'

PROFILE
 VERT. SCALE: 1" = 5'
 HORIZ. SCALE: 1" = 20'

| NO. | DATE | REVISION | APPR. |
|-----|------|----------|-------|
| | | | |
| | | | |
| | | | |

SUBMITTED: *Robert J. Schneider*
 PROFESSIONAL
 APPROVED: _____
 CHIEF-DIVISION OF MINE RECLAMATION
 APPROVED: _____
 DIRECTOR-BUREAU OF DESIGN



COMMONWEALTH OF PENNSYLVANIA
 DEPARTMENT OF ENVIRONMENTAL RESOURCES
 OFFICE OF RESOURCES MANAGEMENT

CONTRACT NO SL 139-1-1

**MINE DRAINAGE POLLUTION ABATEMENT
 LAUREL RUN
 LACKAWANNA RIVER WATERSHED
 LACKAWANNA COUNTY, PENNSYLVANIA**

ALBERT E. PETERS ASSOCIATES
 Engineers-Designers-Consultants

301 North Main Avenue Scranton, Penna. 18504

PLAN, PROFILE & TYPICAL SECTIONS

| | | |
|-----------------------|--------------------|--------------|
| DRAWN BY: R.E.N. | DATE: | DRAWING NO.: |
| CHECKED BY: R.J.S. | SCALE: AS NOTED | 5 OF 6 |