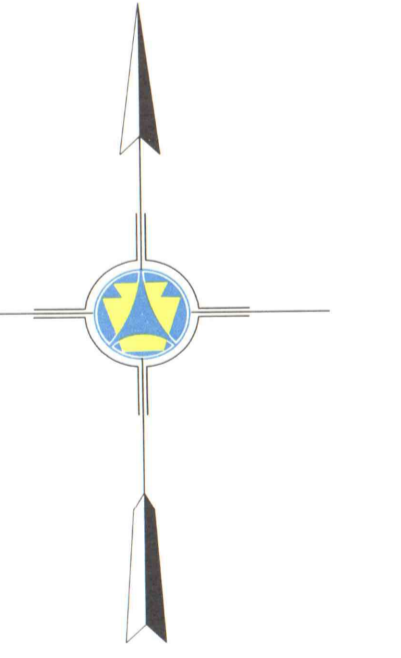
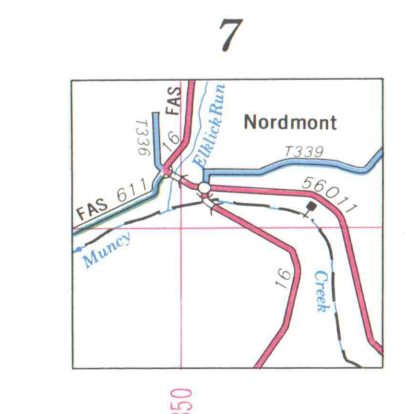
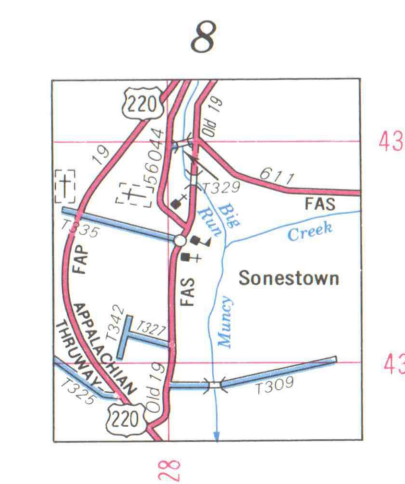
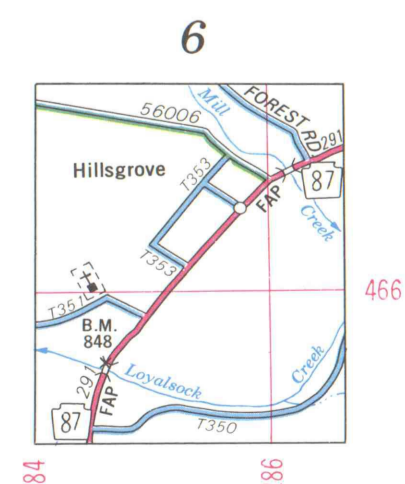
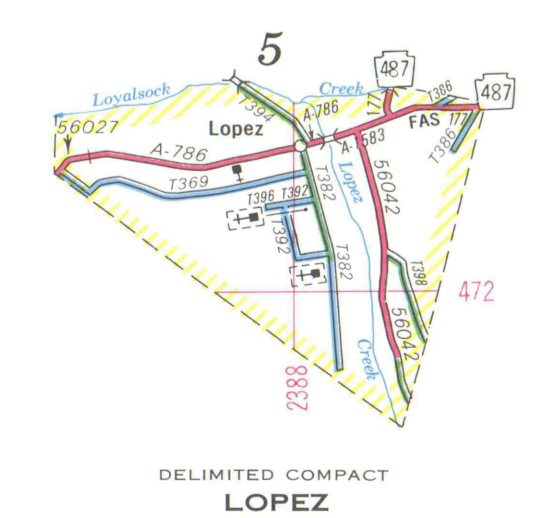
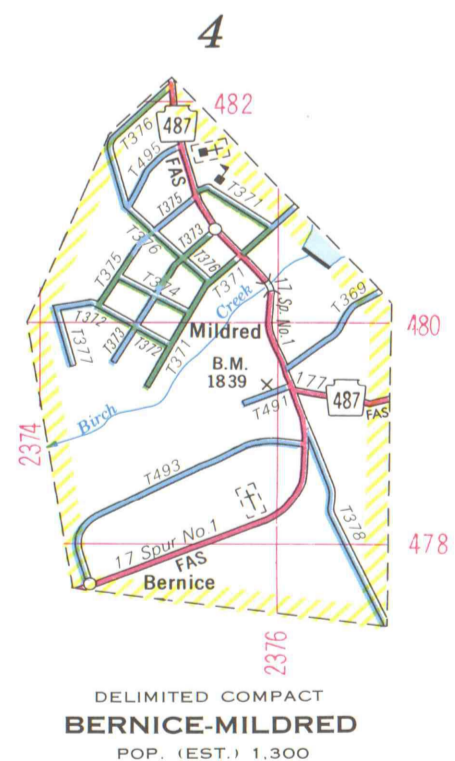
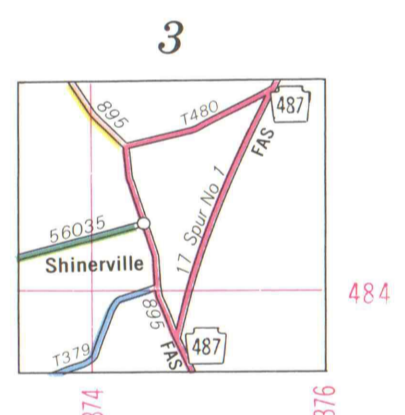
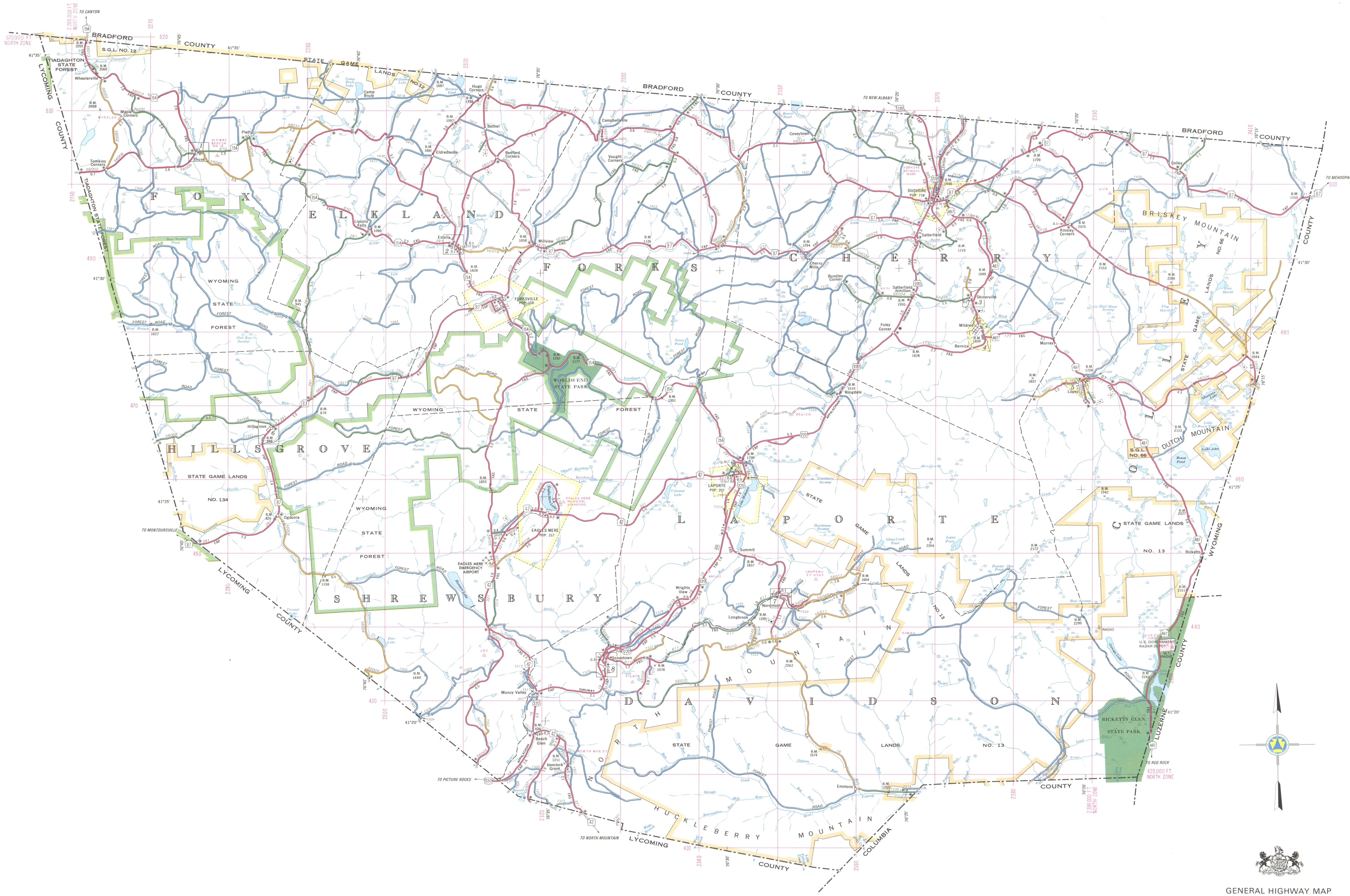


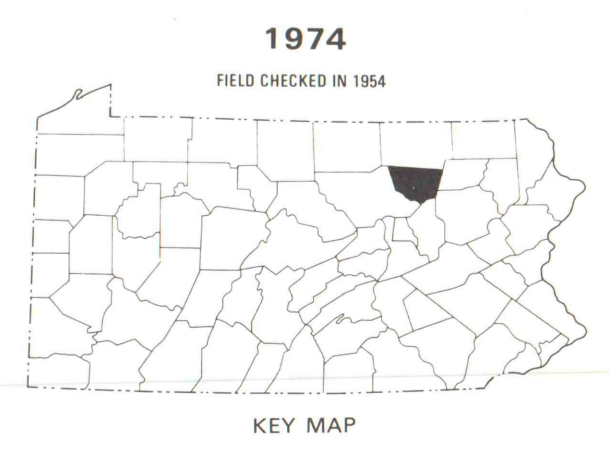
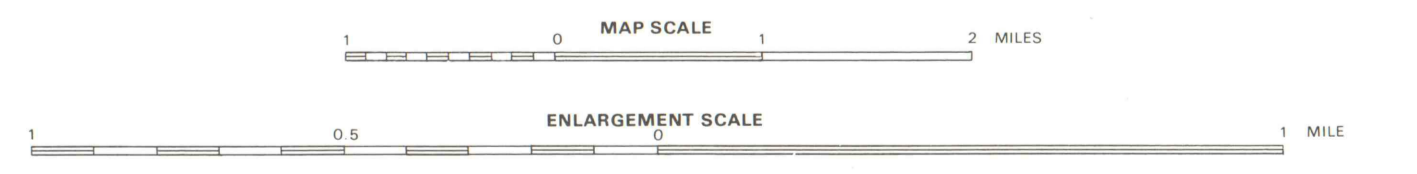
LEGEND

- ROADS AND HIGHWAYS**
  - LIMITED ACCESS HIGHWAY FULL CONTROL
  - DIVIDED HIGHWAY
  - CONCRETE OR BITUMINOUS SURFACE
  - BITUMINOUS SURFACE LOW TYPE
  - GRAVEL OR STONE ROAD
  - GRADED AND DRAINED ROAD
  - UNIMPROVED ROAD
  - PROPOSED ROAD
  - IMPASSABLE ROAD
  - LOCAL ROAD IN INSETS, OR CONNECTING STREET
- BOUNDARIES**
  - STATE LINE
  - COUNTY LINE
  - INCORPORATED CITY
  - INCORPORATED BOROUGHS
  - FIRST CLASS TOWNSHIP LINE
  - SECOND CLASS TOWNSHIP LINE
  - UNINCORPORATED URBAN COMPACT
  - ENLARGED INSET
  - FEDERAL OR STATE RESERVATION
  - BOUNDARY MONUMENT
- DRAINAGE FEATURES**
  - STREAM
  - INTERMITTENT STREAM
  - DAM
  - LAKE, POND, OR RESERVOIR
  - LOCK WITH DAM
  - SWAMP OR MARSH
  - FERRY - TOLL - TR. FREE - FF
  - FORD
- AERONAUTICAL FEATURES**
  - MILITARY AIRFIELD
  - AIRPORT, COMPLETE FACILITIES
  - AIRFIELD, LIMITED FACILITIES
  - SEAPLANE BASE
  - HELIPORT
  - AIRWAY LIGHT BEACON
- MISCELLANEOUS SYMBOLS**
  - SHOPPING CENTER
  - INDUSTRIAL PARK
  - FAIRGROUND, RACE COURSE, SPEEDWAY
  - AMUSEMENT PARK
  - BENCH MARK WITH ELEVATION
  - HORIZONTAL CONTROL STATION
  - LATITUDE AND LONGITUDE TICK
  - STATE PLANE COORDINATE GRID
- ROADWAY FEATURES**
  - FEDERAL AID INTERSTATE SYSTEM
  - FEDERAL AID PRIMARY SYSTEM
  - FEDERAL AID URBAN SYSTEM
  - FEDERAL AID SECONDARY SYSTEM
  - INTERSTATE ROUTE NUMBER
  - U.S. ROUTE NUMBER
  - PENNSYLVANIA ROUTE NUMBER
  - STATE LEGISLATIVE ROUTE NUMBER
  - TOWNSHIP ROAD NUMBER
  - MILEAGE BETWEEN ASTERISKS
  - TOLL, BOTH
  - COUNTY SEAT
  - OTHER COMMUNITIES
- RAILROADS**
  - STANDARD GAUGE RAILROAD
  - NARROW GAUGE RAILROAD
  - RAILROAD STATION
  - ELECTRIC RAILROAD
  - RAILROAD OVERPASS
  - RAILROAD UNDERPASS
  - RAILROAD TUNNEL
  - ABANDONED RAILROAD, TRUCK RETAINED
- ROADWAY STRUCTURES**
  - HIGHWAY BRIDGE OVER 20' SPAN
  - LONG BRIDGE OR VIADUCT
  - COVERED BRIDGE
  - HIGHWAY TUNNEL
  - DAM WITH ROAD
  - LEVEE OR DIKE WITH ROAD
- INSTITUTIONS**
  - SCHOOL, COLLEGE OR UNIVERSITY
  - CHURCH OR OTHER RELIGIOUS INSTITUTION
  - CEMETERY
  - CHURCH WITH CEMETERY ADJACENT
  - HOSPITAL
  - CORRECTIONAL INSTITUTION
- PUBLIC SERVICE FACILITIES**
  - STATE HIGHWAY GARAGE
  - STATE POLICE STATION
  - FIRE STATION
  - POST OFFICE
  - COUNTY FARM
  - RADIO OR TELEVISION TOWER
  - ROADSIDE REST



GENERAL HIGHWAY MAP  
**SULLIVAN COUNTY**  
 PENNSYLVANIA

PREPARED BY THE  
 PENNSYLVANIA DEPARTMENT OF TRANSPORTATION  
 BUREAU OF TRANSPORTATION PLANNING STATISTICS  
 IN COOPERATION WITH THE  
 U.S. DEPARTMENT OF TRANSPORTATION  
 FEDERAL HIGHWAY ADMINISTRATION



COPIES OF THIS MAP ARE AVAILABLE AT NOMINAL COST  
 CONTACT:  
 PENNSYLVANIA DEPARTMENT OF TRANSPORTATION  
 TRANSPORTATION AND SAFETY BUILDING  
 PUBLICATION SALES SECTION  
 HARRISBURG, PENNSYLVANIA 17120

1974  
 REISSUED 9/1984

COPYRIGHT 1974 - COMMONWEALTH OF PENNSYLVANIA, DEPARTMENT OF TRANSPORTATION. POPULATION OF COUNTY - 1970 CENSUS - 5,961. AREA OF COUNTY - 479 SQUARE MILES. POLYCONIC PROJECTION - 10,000 FOOT GRID BASED ON THE PENNSYLVANIA NORTH PLANE COORDINATE SYSTEM.

TYPE 10 GENERAL HIGHWAY MAP SULLIVAN COUNTY PENNSYLVANIA 98