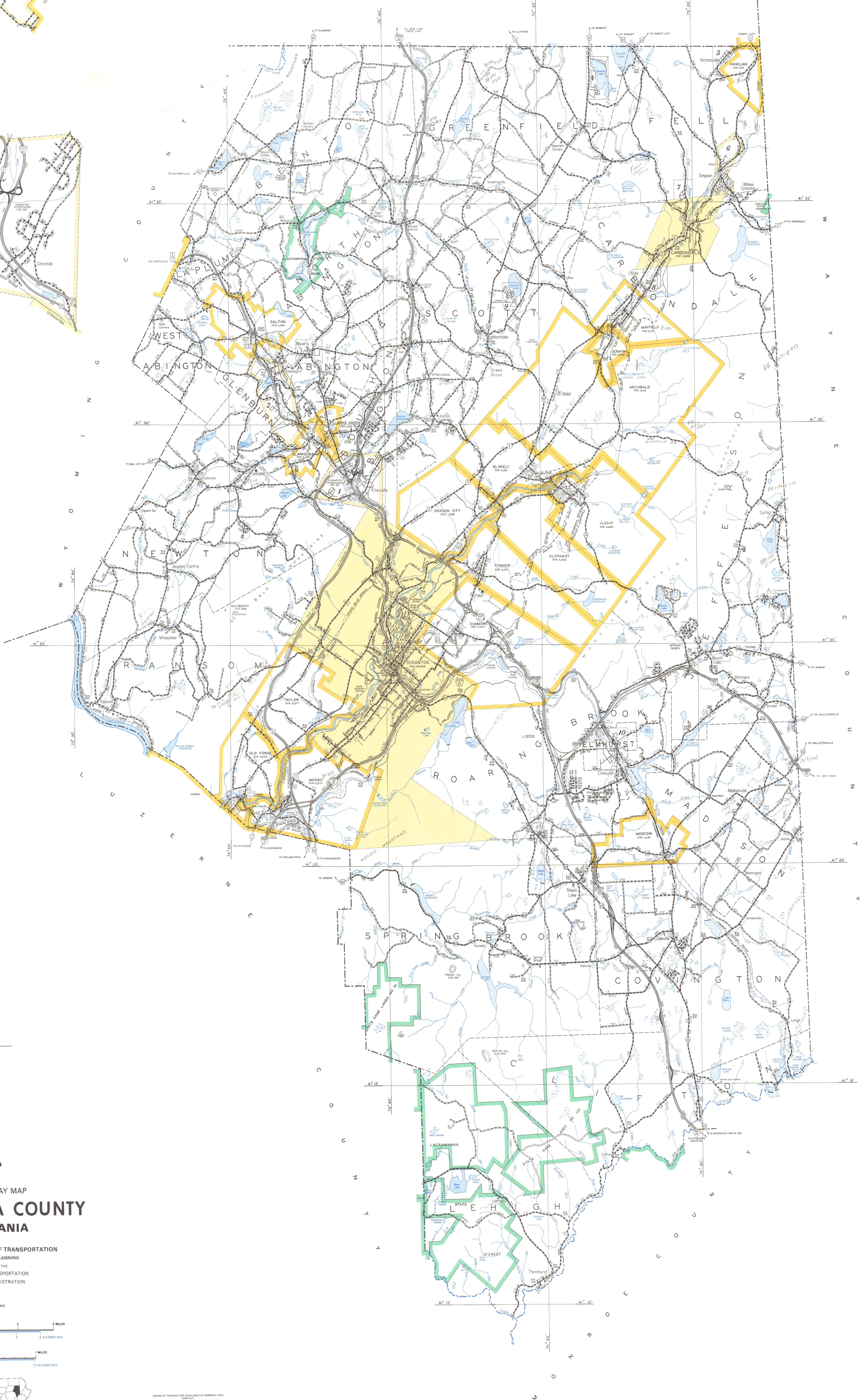


S U S Q U E H A N N A C O U N T Y



1" = 1 mile

LEGEND

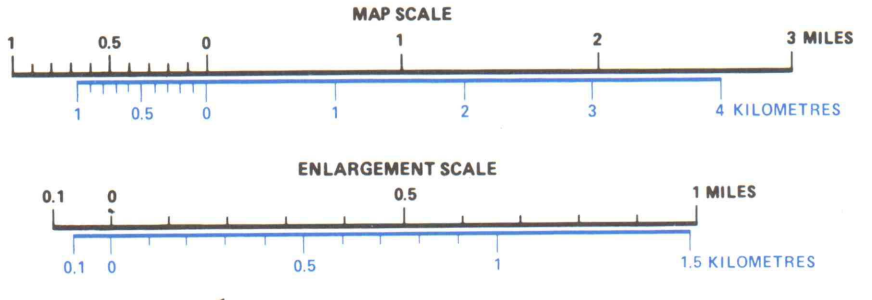
- GENERAL CULTURAL FEATURES**
 - SHIPPING CENTER
 - INDUSTRIAL PARK
 - APARTMENT COMPLEX - 50 OR MORE UNITS
 - MOBILE HOME PARK - 100 OR MORE UNITS
 - STATE PARK, CO-COUNTY, MP, MUNICIPAL
 - RESIDENTIAL PARK
 - FAIRGROUND, RACE COURSE, SPEEDWAY
 - TENNIS COURT
 - ROADSIDE REST AREA
 - SCHOOL, COLLEGE OR UNIVERSITY
 - CHURCH OR OTHER RELIGIOUS INSTITUTION
 - CEMETERY
 - CHURCH WITH CEMETERY ADJACENT
 - CHURCH AND SCHOOL
 - HOSPITAL
 - CONVENTIONAL INSTITUTION
 - COUNTY FARM
 - STATE HIGHWAY GARAGE
 - STATE HOUSE EXHIBITION
 - FIRE STATION
 - POST OFFICE
 - MUNICIPAL BUILDING
 - RADIO OR TELEVISION TOWER
- COMMUNITY CENTERS**
 - STATE CAPITAL
 - COUNTY SEAT
 - OTHER COMMUNITIES
- MISCELLANEOUS MAP FEATURES**
 - HORIZONTAL CENTERLINE
 - BENCH MARK WITH ELEVATION
 - LATITUDE AND LONGITUDE LINE
 - BOUNDARY MONUMENT
 - PROMINENT PEAK OR HILL
- AERONAUTICAL FEATURES**
 - MILITARY AIRFIELD
 - AIRPORT COMPLETE FACILITIES
 - AIRPORT LIMITED FACILITIES
 - SEAPLANE BASE
 - HELIPORT
 - AIRWAY BEACON
- ROADWAY STRUCTURES**
 - HIGHWAY BRIDGE - OVER BY SPAN
 - LONG BRIDGE OR VIADUCT
 - COVERED BRIDGE
 - SUSPENSION BRIDGE
 - ARCH BRIDGE
 - TRUSS BRIDGE
 - CANTILEVER BRIDGE
 - DAW WITH ROAD
 - SHADOWED TUNNEL
 - HIGHWAY TUNNEL
 - LEVEE OR DIKE WITH ROAD
- DRAINAGE FEATURES**
 - RIVER OR WIDE STREAM
 - STREAM
 - INTERMITTENT STREAM
 - WIDE STREAM WITH DAM
 - LAKE, TONNAGE OF RESERVOIR WITH DAM
 - LOCK WITH DAM
 - BARRAGE OR WEIR
 - FERRY, TOLL, FREE-FEET
 - FORD
- RAILROADS**
 - STANDARD GAUGE RAILROAD
 - NARROW GAUGE RAILROAD
 - ELECTRIC RAILROAD
 - RAILROAD CROSSING
 - RAILROAD UNDERPASS
 - GRADE CROSSING
 - RAILROAD TUNNEL
 - DAMAGED IN RAILROAD OWNERSHIP
 - RAILROAD STATION
 - ABANDONED RAILROAD - TRACK RETAINED
 - ABANDONED RAILROAD - TRACKS AND RETAINED
- BOUNDARIES**
 - STATE LINE
 - COUNTY LINE
 - TOWNSHIP LINE
 - INCORPORATED CITY
 - INCORPORATED BOROUGH
 - UNINCORPORATED URBAN CONTACT LINE
 - ENLARGED MET LINE
 - FEDERAL OR STATE LAND LINE
 - POCATELLO FIRE CLASH TOWNSHIP
- ROAD AND ROADWAY FEATURES**
 - FEDERAL AND SECONDARY HIGHWAY SYSTEM
 - INTERSTATE TRAFFIC ROUTE NUMBER
 - U.S. TRAFFIC ROUTE NUMBER
 - PENNSYLVANIA TRAFFIC ROUTE NUMBER
 - PENNSYLVANIA LEGISLATIVE ROUTE NUMBER
 - COUNTY ROAD
 - TOWNSHIP ROAD NUMBER
 - TOWNSHIP ROAD NUMBER
 - LOCAL ROAD IN INSET OR CONNECTING STREET
 - DIVIDED HIGHWAY - ACCESS FULLY CONTROLLED
 - CONCRETE OR BRICK ROAD
 - BITUMINOUS ROAD - HIGH TYPE
 - BITUMINOUS ROAD - LOW TYPE
 - GRAVEL OR STONE ROAD
 - GRAVEL OR GRAVEL ROAD
 - PRIMITIVE ROAD
 - UNPAVAILABLE ROAD

GENERAL HIGHWAY MAP
LACKAWANNA COUNTY
PENNSYLVANIA

PREPARED BY THE
PENNSYLVANIA DEPARTMENT OF TRANSPORTATION
BUREAU OF ADVANCE PLANNING
IN COOPERATION WITH THE
U.S. DEPARTMENT OF TRANSPORTATION
FEDERAL HIGHWAY ADMINISTRATION

1980

CULTURE FEATURES AT 1/8" = 1 MILE



POPULATION OF COUNTY - 1970 CENSUS - 234,107
AREA OF COUNTY - 428 SQUARE MILES

COPYRIGHT 1981 - COMMONWEALTH OF PENNSYLVANIA
DEPARTMENT OF GENERAL SERVICES

Metric conversions of miles to Kilometers are shown in parentheses. (1.61 km = 1 mile). Distances are rounded to the nearest tenth of a kilometer. Average: 0.1 mile = 0.16 Kilometers or 0.20 Kilometers = 0.32 Kilometers or 0.20 Kilometers = 0.32 Kilometers or 0.20 Kilometers = 0.32 Kilometers. Some equivalents may not be shown in congested areas. The examples above will be useful in determining the metric distance.