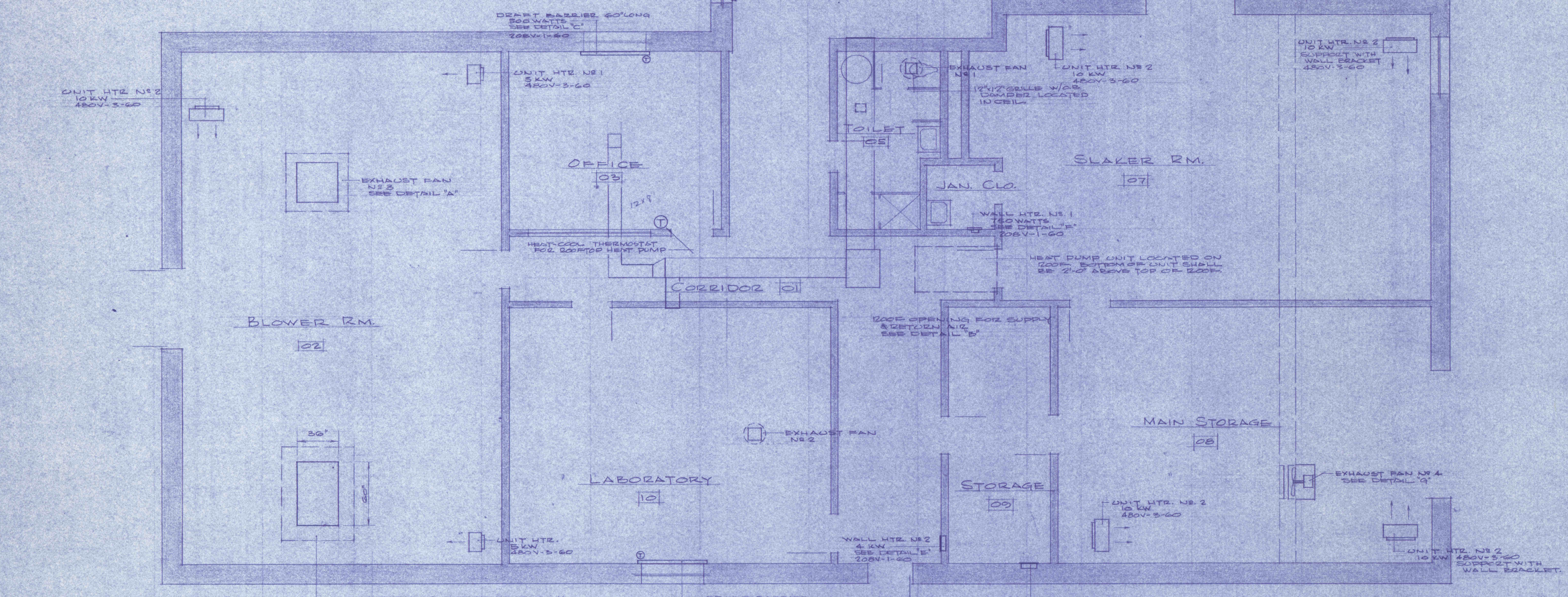
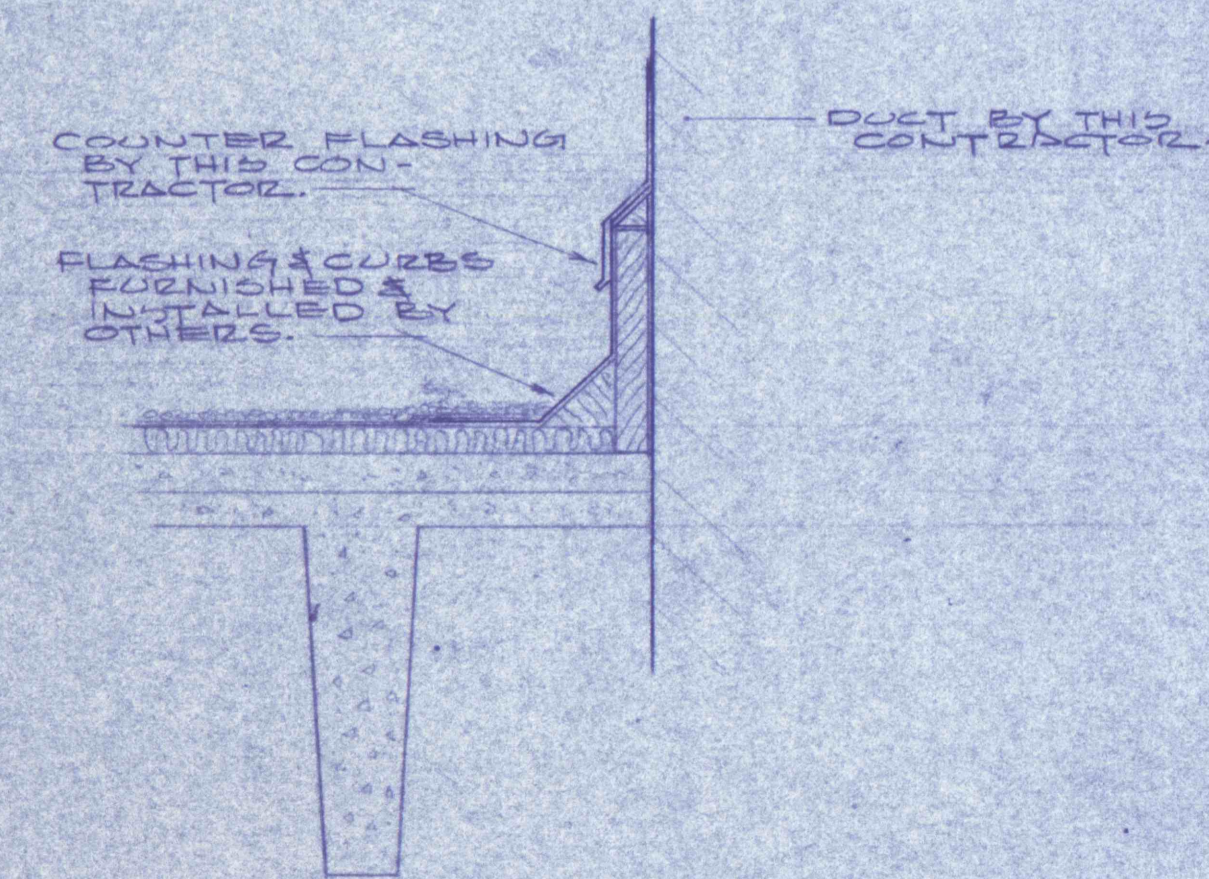


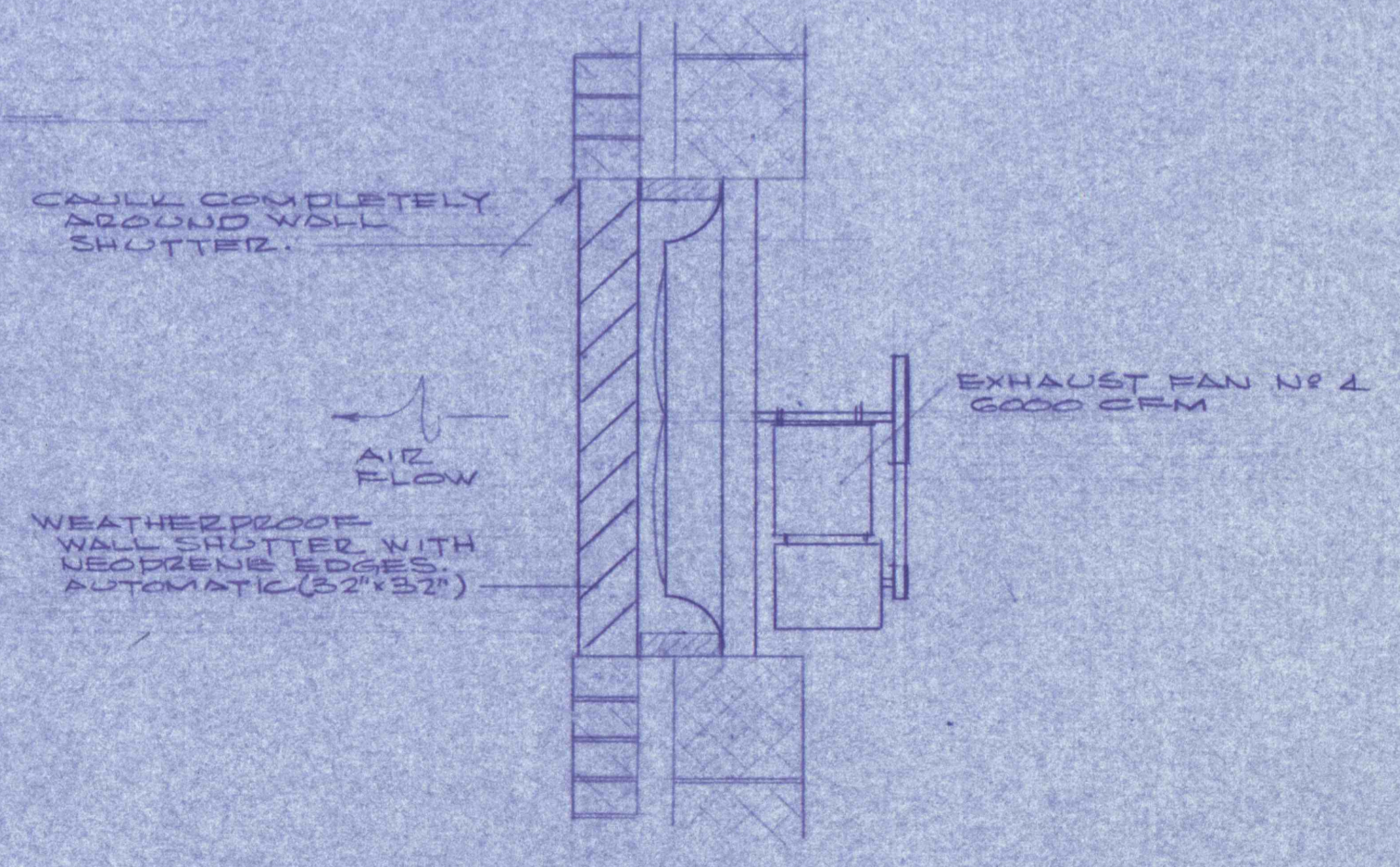
DETAIL "A" - PREFABRICATED CURB
14' 1 1/2"



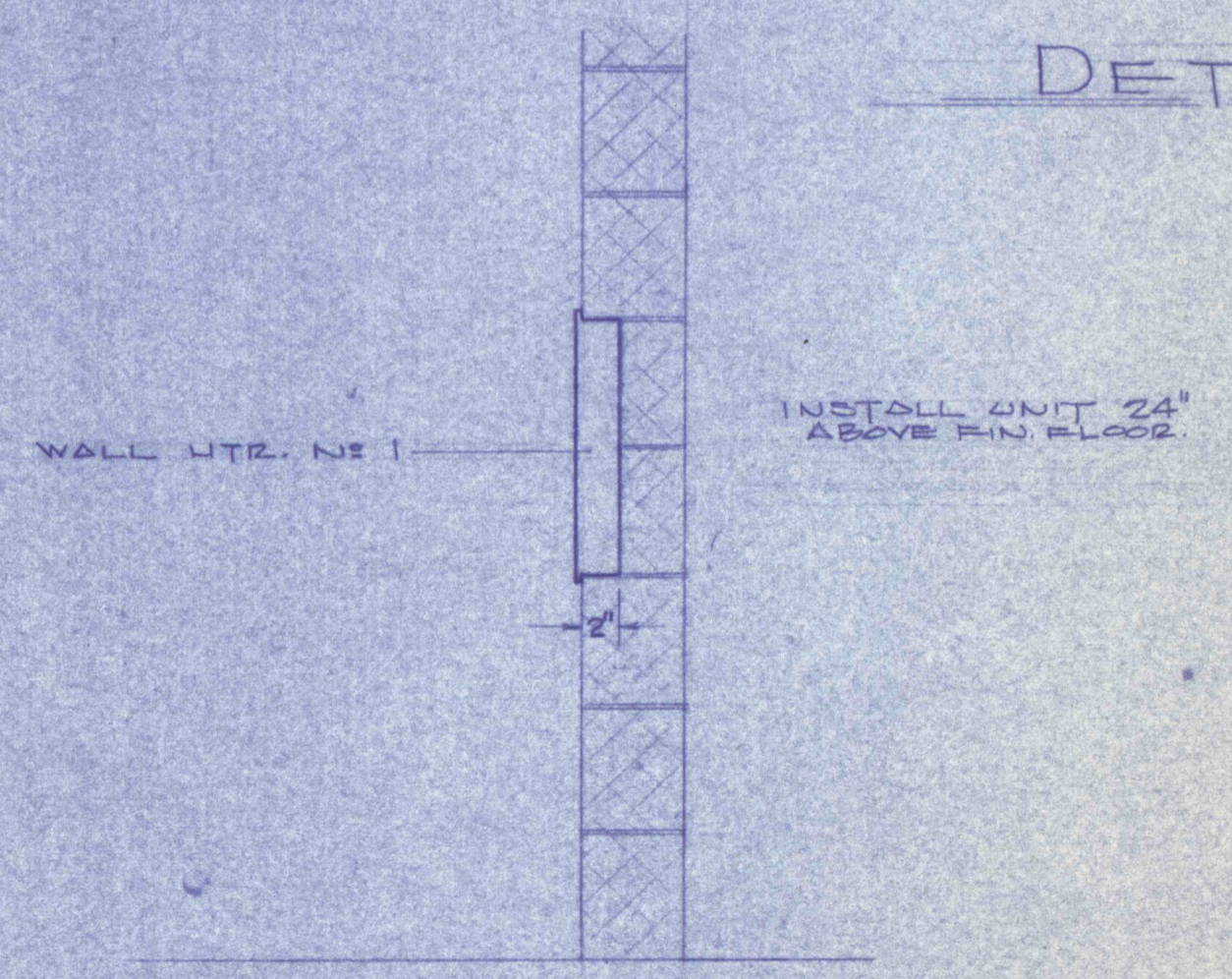
FLOOR PLAN



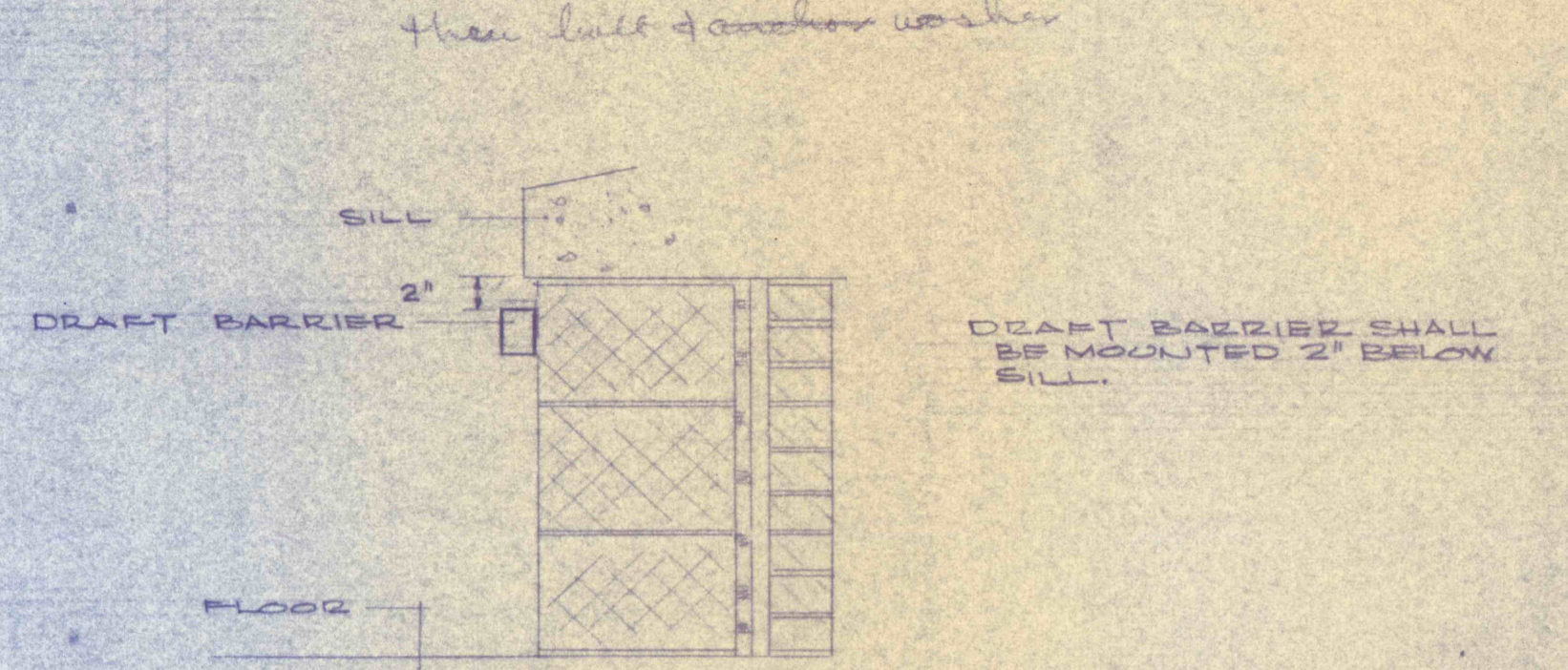
DETAIL "B" - DUCT THRU ROOF
14' 1 1/2"



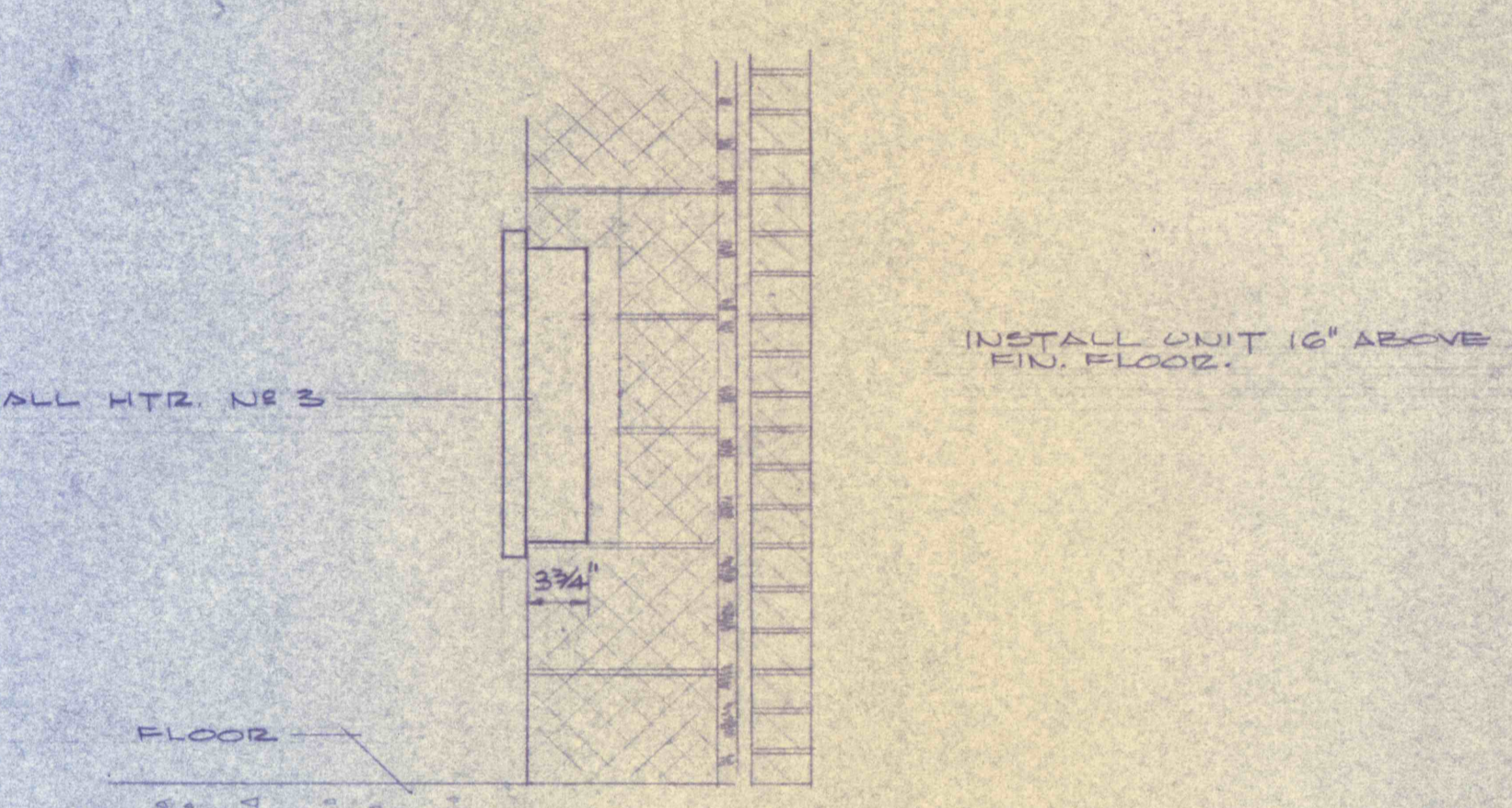
DETAIL "G" - EXHAUST FAN NO. 4
14' 1 1/2"



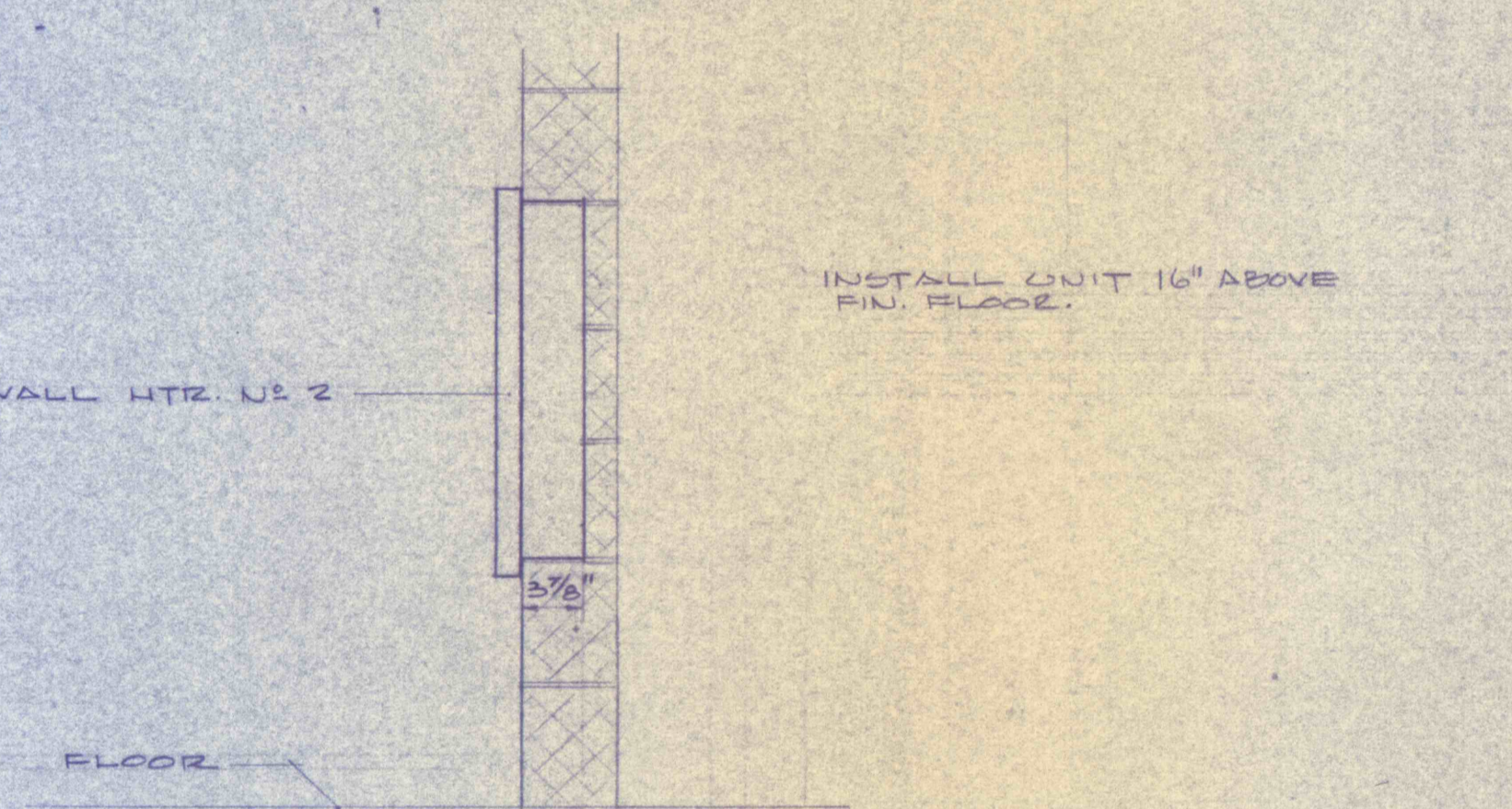
DETAIL "F" - WALL HTR. NO. 1
14' 1 1/2"



DETAIL "C" - DRAFT BARRIER
14' 1 1/2"



DETAIL "D" - WALL HTR. NO. 3
14' 1 1/2"



DETAIL "E" - WALL HTR. NO. 2
14' 1 1/2"

- EXHAUST FANS**
- NO. 1 CENTRIFUGAL ROOF EXHAUSTER, DIRECT DRIVE, SINGLE SPEED, 200 CFM, 550 RPM, 1/2" S.D., 1/20 HP, CONTROL WITH LIGHT CIRCUIT.
 - NO. 2 CENTRIFUGAL ROOF EXHAUSTER, DIRECT DRIVE, THREE SPEED, 1300/650/320 CFM, 1750/1150/550 RPM, 1/2" S.D., 1/6 HP, CONTROL WITH HI-LO-OFF-ON SELECTOR SWITCH.
 - NO. 3 PROPELLER TYPE, BELT DRIVEN, 60WPM ROOF VENTILATOR, TWO SPEED, 1,000/500 CFM, 1750/1150 RPM, 1/2" S.D., 1/2 HP, CONTROL WITH HI-LO-OFF-ON SELECTOR SWITCH AND INTERLOCK WITH EMERG. GEN.
 - NO. 4 PROPELLER TYPE BELT DRIVEN WALL FAN, SINGLE SPEED, 6000 CFM, 1/2 HP.

- NOTES**
- 1 THIS CONTRACTOR SHALL FURNISH GENERAL CONTRACTOR WITH EXACT LOCATIONS AND DIMENSIONS OF ALL OPENINGS DESIRED IN WALLS AND ROOFS FOR INSTALLATION OF EQUIPMENT FURNISHED UNDER THIS CONTRACT.
 - 2 SUPPORT UNIT HEATERS FROM CONCRETE TIES USING EITHER T HANGERS FOR USE WITH TIES OR MASONRY ANCHORS SECURED INTO CONCRETE TIES. SUPPORT SHALL BE INSTALLED IN SUCH A MANNER AS TO IN NO WAY IMPAIR THE STRUCTURAL CHARACTERISTICS OF THE TIES WHERE INDICATED ON DRAWING. UNIT HEATERS ARE SUSPENDED FROM WALL USING WALL BRACKETS. MIN. BY SAME MFR. AS UNIT HEATER.

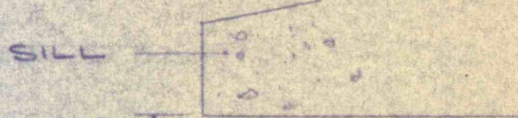
HEAT PUMP UNIT

COOLING LOAD - TOTAL LOAD 70,800 BTU/HR
SENS. LOAD 60,000 BTU/HR
AIR ENT. INDOOR COIL - 80°F DB, 67°F WB
AIR ENT. OUTDOOR COIL - 95°F DB

HEATING LOAD - TOTAL LOAD 74,600 BTU/HR
UNIT SHALL BE FURNISHED WITH 15 KW ACCESSORY STRIP HTR.
AIR ENT. OUTDOOR COIL - 55°F DB
AIR ENT. INDOOR COIL - 60°F DB

INDOOR FAN - 2500 CFM, 3/4 HP, 1.5" EXT. SP.
OUT SHALL BE 480V, 3-60

Here, limit of concrete washer



DRAFT BARRIER

DRAFT BARRIER SHALL BE MOUNTED 2" BELOW SILL.



FLOOR

INSTALL UNIT 16" ABOVE FIN. FLOOR.



FLOOR

INSTALL UNIT 16" ABOVE FIN. FLOOR.



FLOOR



FLOOR

INSTALL UNIT 24" ABOVE FIN. FLOOR.

REVISIONS	
CONTROL BUILDING H.V.A.C. PLAN	
CONSTRUCTION OF TREATMENT FACILITIES OF ACID MINE DRAINAGE RAUSCH CREEK WATERSHED SCHUYLKILL COUNTY, PENNSYLVANIA	JOB NO. 6805 DATE: NOV. 1969 SCALE: AS NOTED DRAWN: M.D.C. APPROVED:
ANTRACITE RESEARCH & DEVELOPMENT CO., INC. consulting engineers TAMAGUA POTTSTVILLE PENNSYLVANIA	DRAWING NO. HV-1