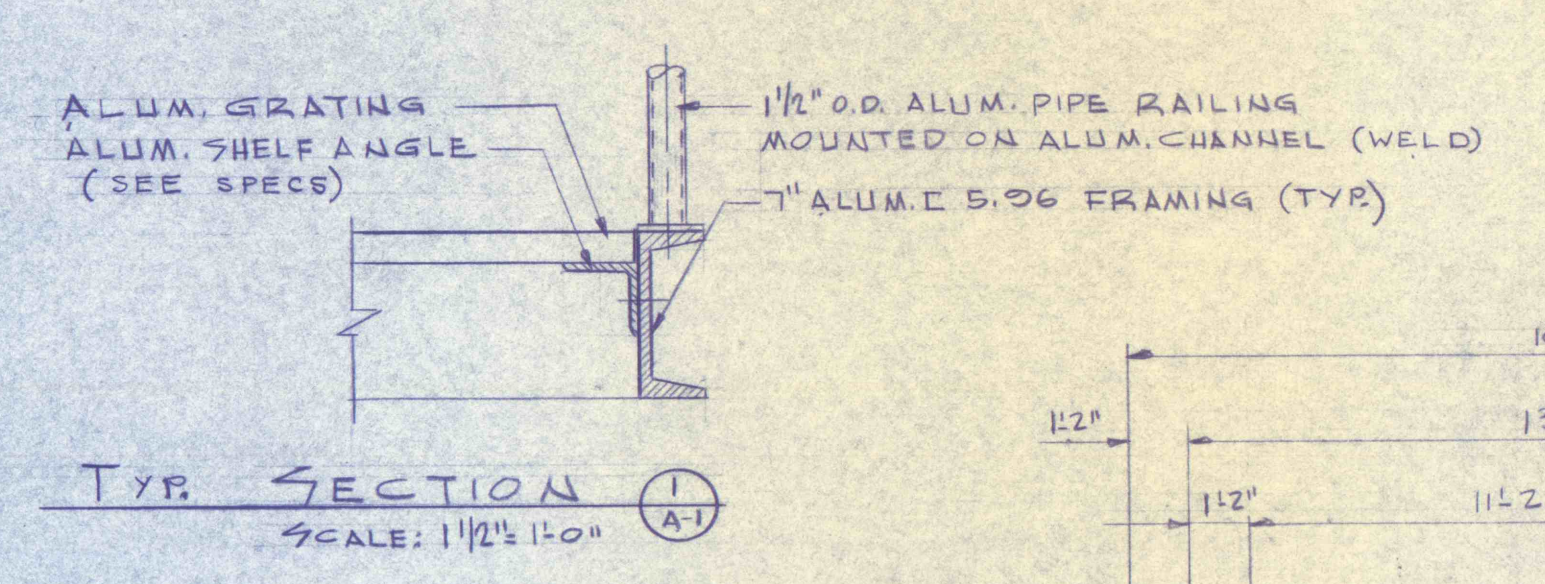
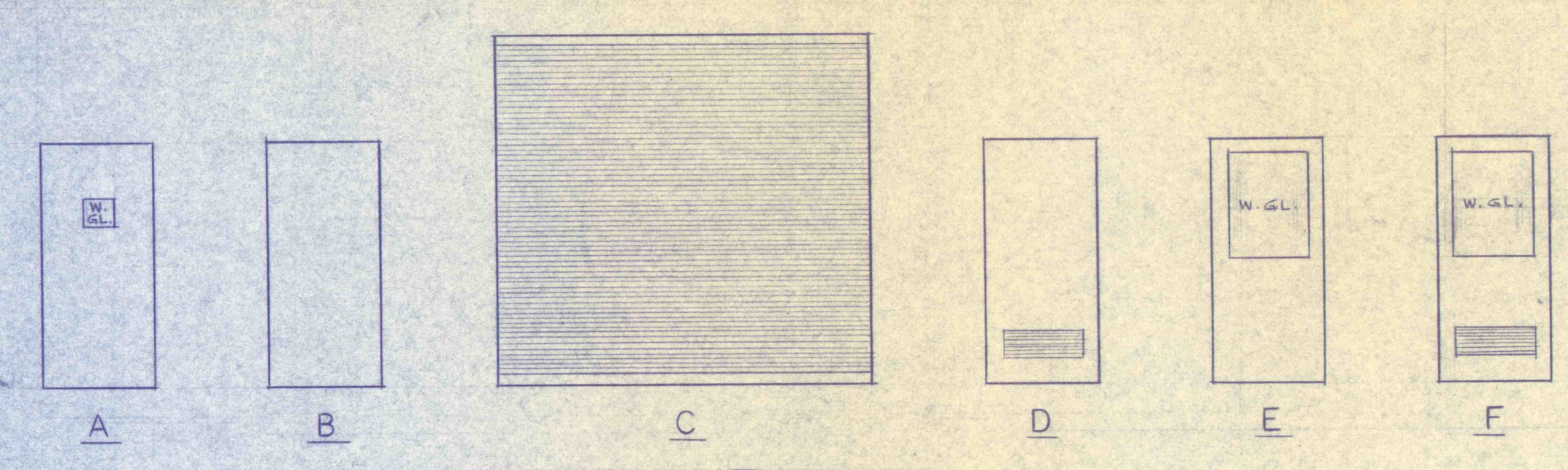
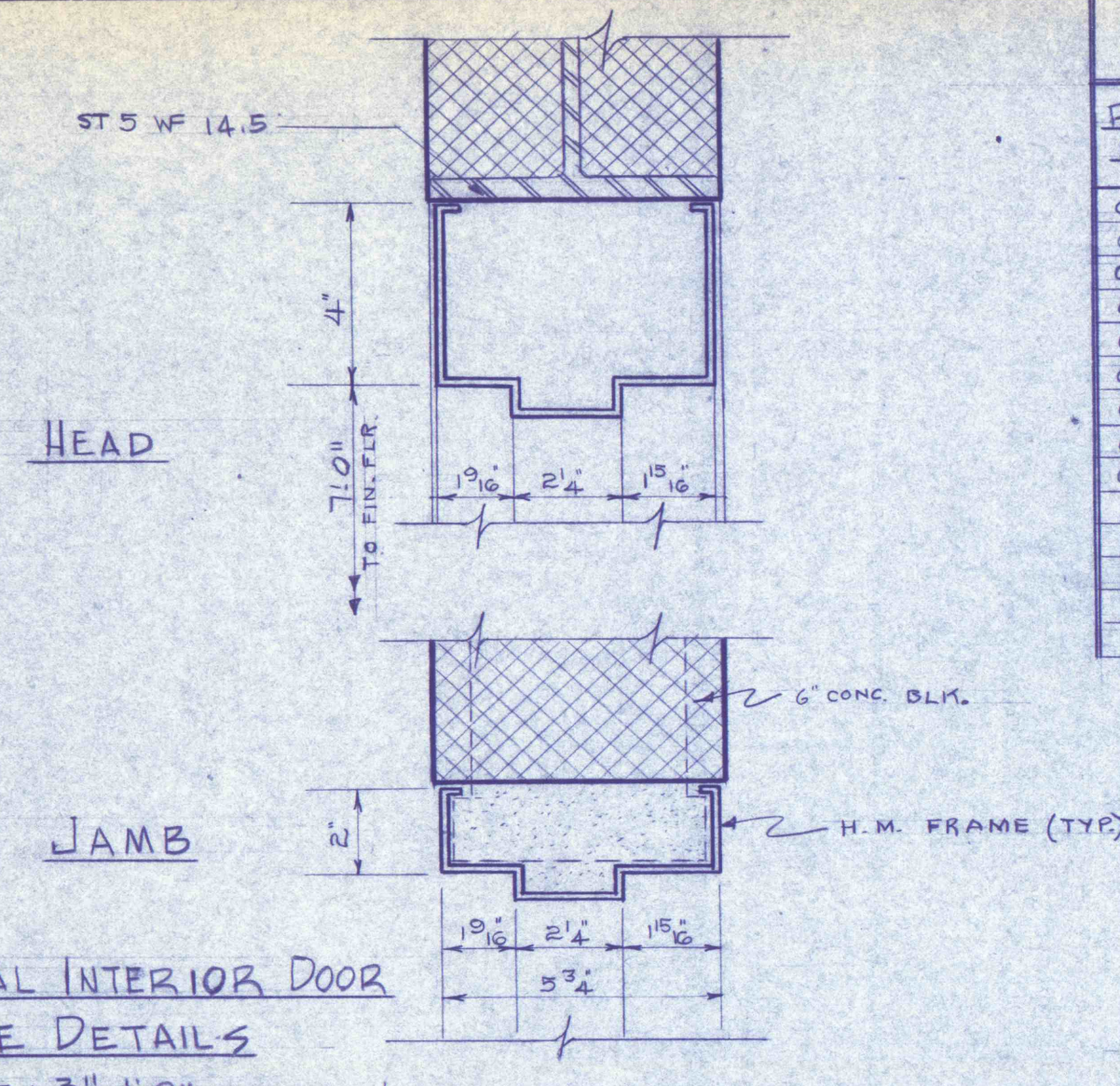


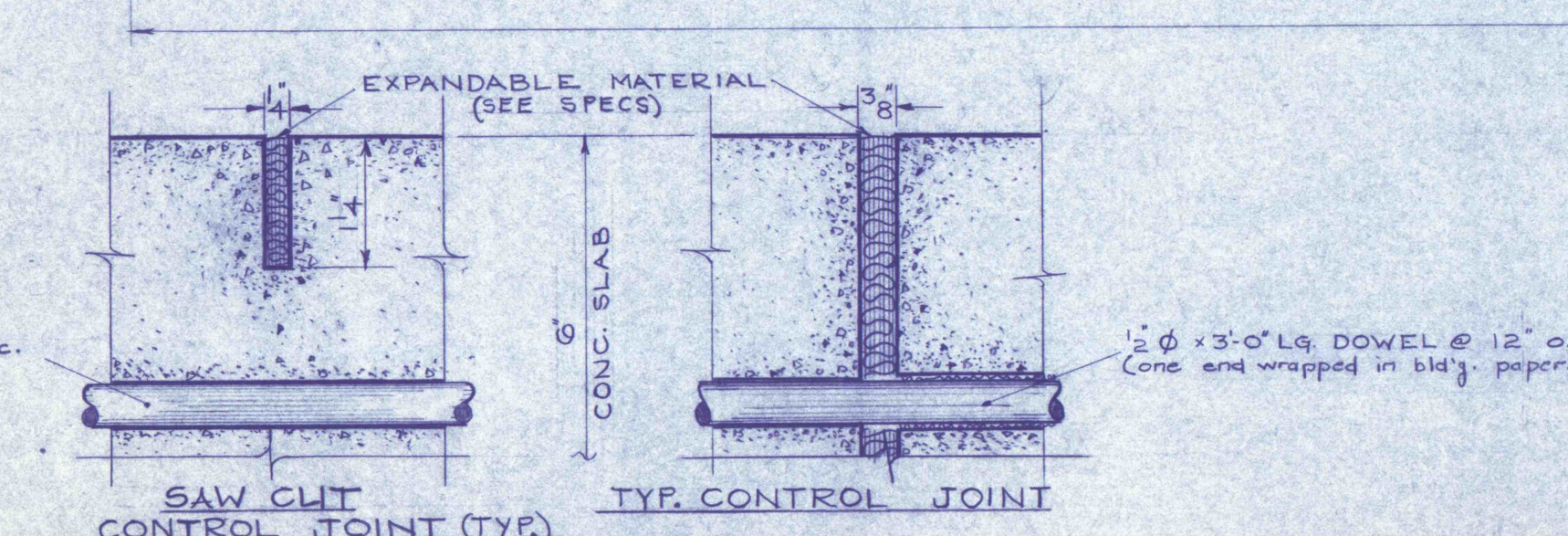
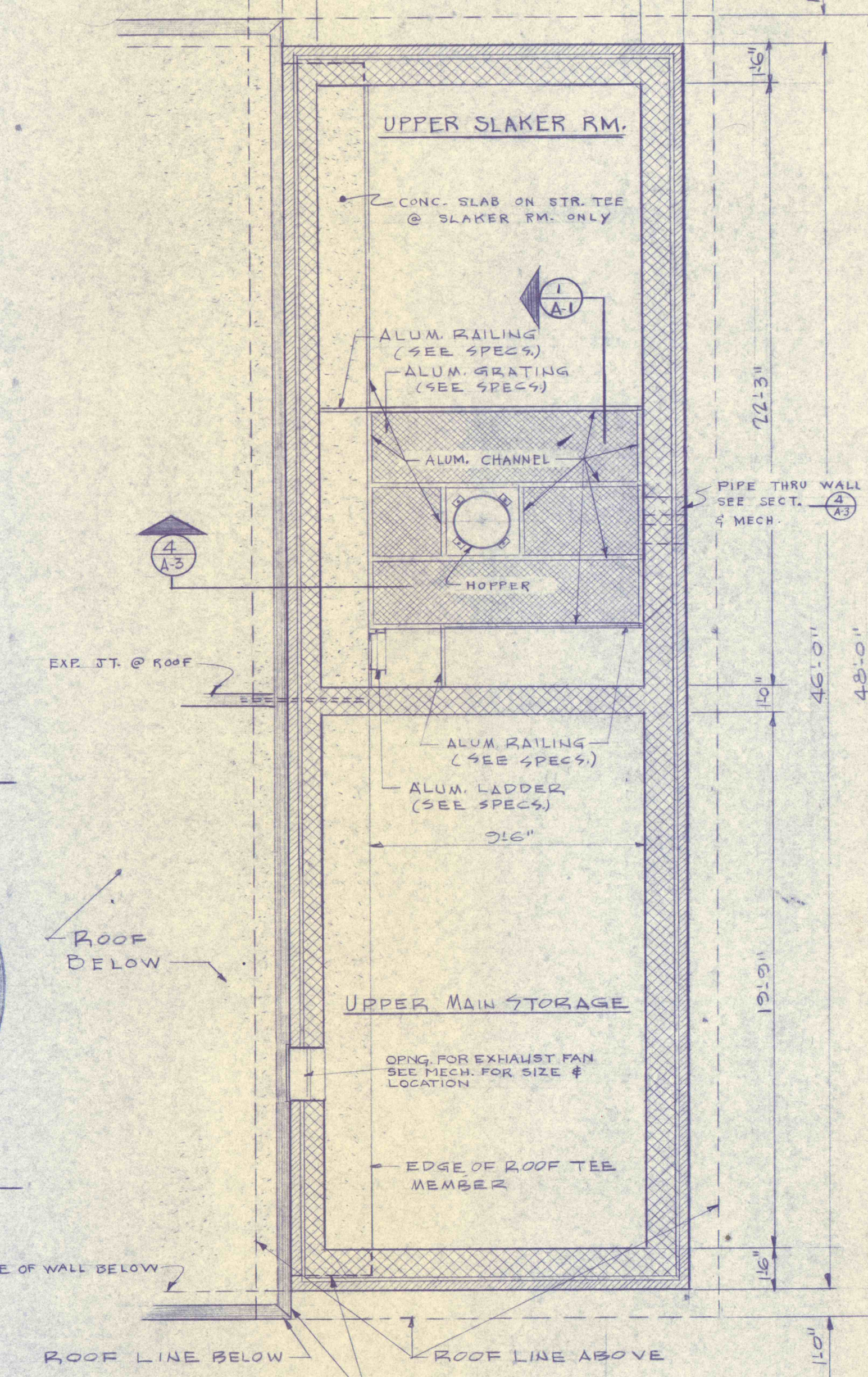
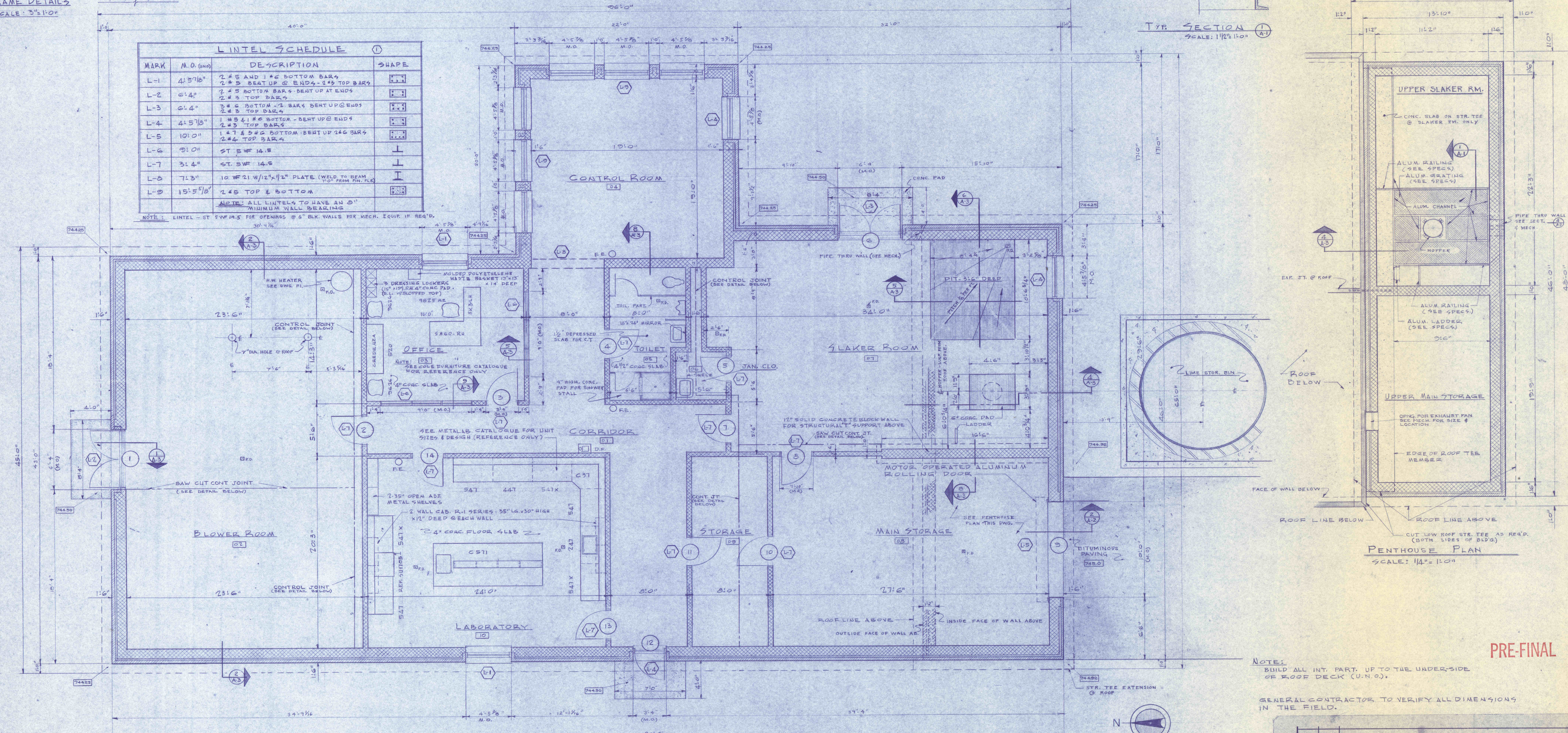
ROOM FINISH SCHEDULE										
RM NO	ROOM NAME	FLOOR	BASE	WALLS				CEILING		REMARKS
				WEST	EAST	NORTH	SOUTH	MAT	TYPE	
01	CORRIDOR	V.A.T.	VINYL	BLK PAINT	BLK PAINT	BLK PAINT	BLK PAINT	ACOR 205P	916"	
02	BLOWER ROOM	CONC.		BLK PAINT	BLK PAINT	BLK PAINT	BLK PAINT	OPEN		
03	OFFICE	V.A.T.	VINYL	BLK PAINT	BLK PAINT	BLK PAINT	BLK PAINT	ACOR 205P	916"	
04	CONTROL ROOM	CONC.		BLK PAINT	BLK PAINT	BLK PAINT	BLK PAINT	OPEN		
05	TOILET	C.T.		BLK PAINT	BLK PAINT	BLK PAINT	BLK PAINT	OPEN		KEENER SMOOTH EAST GLA. PAINTED
06	JANITOR'S ROOM	CONC.		BLK PAINT	BLK PAINT	BLK PAINT	BLK PAINT	OPEN		
07	SLAKER ROOM	CONC.		BLK PAINT	BLK PAINT	BLK PAINT	BLK PAINT	OPEN		
08	MAIN STORAGE	CONC.		BLK PAINT	BLK PAINT	BLK PAINT	BLK PAINT	OPEN		
09	STORAGE	CONC.		BLK PAINT	BLK PAINT	BLK PAINT	BLK PAINT	OPEN		
10	LABORATORY	CONC.		BLK PAINT	BLK PAINT	BLK PAINT	BLK PAINT	OPEN		SPAL & HARDEN CONC FLOOR

DOOR SCHEDULE										
DOOR NO	TYPE	MAT.	SIZE			FRAME	WALL CONST.	REMARKS		
			WIDE	HIGH	THICK			TYPE	MAT.	
1	B	H.M.	213"	710"	1 3/4"		BLK/BRK			
2	E	H.M.	310"	710"	1 3/4"		BLK/BRK			
3	F	H.M.	310"	710"	1 3/4"		BLK/BRK			LOUVER (2'-0" X 1'-0")
4	D	H.M.	310"	710"	1 3/4"		BLK/BRK			LOUVER (1'-0" X 1'-0")
5	D	H.M.	216"	710"	1 3/4"		BLK/BRK			
6	D	H.M.	213"	710"	1 3/4"		BLK/BRK			OPERABLE LOUVER (2'-0" X 3'-0")
7	A	H.M.	310"	710"	1 3/4"		BLK/BRK			
8	A	H.M.	310"	710"	1 3/4"		BLK/BRK			1/2" LOUVER (2'-4" X 2'-0") FREE
9	C	ALUM.	100"	11'-0"			BLK/BRK			ALUMINUM ROLLING DOOR MTR. 8/89
10	D	H.M.	310"	710"	1 3/4"		BLK/BRK			
11	B	H.M.	310"	710"	1 3/4"		BLK/BRK			
12	E	H.M.	310"	710"	1 3/4"		BLK/BRK			
13	E	H.M.	309"	710"	1 3/4"		BLK/BRK			
14	F	H.M.	3'-0"	7'-0"	1 3/4"		BLK/BRK			LOUVER (2'-0" X 2'-0")



LINTEL SCHEDULE			
MARK	N.O. (SHAPE)	DESCRIPTION	SHAPE
L-1	4-5/16"	2 #4 AND 1 #6 BOTTOM BARS	[Symbol]
L-2	6-4"	2 #4 BEAT UP @ ENDS & 2 #2 TOP BARS	[Symbol]
L-3	6-4"	2 #4 BOTTOM BARS - BEAT UP @ ENDS	[Symbol]
L-4	4-5/16"	2 #4 & 2 #6 BOTTOM - BEAT UP @ ENDS	[Symbol]
L-5	10-0"	1 #4 & 2 #6 BOTTOM - BEAT UP @ ENDS	[Symbol]
L-6	3-10"	ST 5 WF 14.5	[Symbol]
L-7	3-14"	ST 5 WF 14.5	[Symbol]
L-8	7-3"	10 WF 21 W/1/2" X 1/2" PLATE (WELD TO BEAM 7'-0" FROM FIN. F.L.G.)	[Symbol]
L-9	15-5/16"	2 #4 TOP & BOTTOM	[Symbol]

NOTE: ALL LINTELS TO HAVE AN 8" MINIMUM WALL BEARING.



FLOOR PLAN  
SCALE: 1/4" = 1'-0"  
FIN. FLR. ELEV. - 715.00

NOTE: BUILD ALL INT. PART. UP TO THE UNDER-SIDE OF ROOF DECK (U.N.O.).  
GENERAL CONTRACTOR TO VERIFY ALL DIMENSIONS IN THE FIELD.

PRE-FINAL

REVISIONS	

FLOOR PLAN - SCHEDULES - DETAILS		JOB NO: 6805
CONSTRUCTION OF TREATMENT FACILITIES FOR ACID MINE DRAINAGE		DATE: 1/1/78
RAUSCH CREEK WATERSHED		SCALE: NOTED
SCHUYLKILL COUNTY PENNSYLVANIA		DRAWN: A.P.-W.E.P.
ANTHRACITE RESEARCH & DEVELOPMENT CO. INC.		APPROVED: T.H.R.-J.T.L.
POTTSVILLE PENNSYLVANIA		TAMAQUA
DRAWING NO: A-1		

