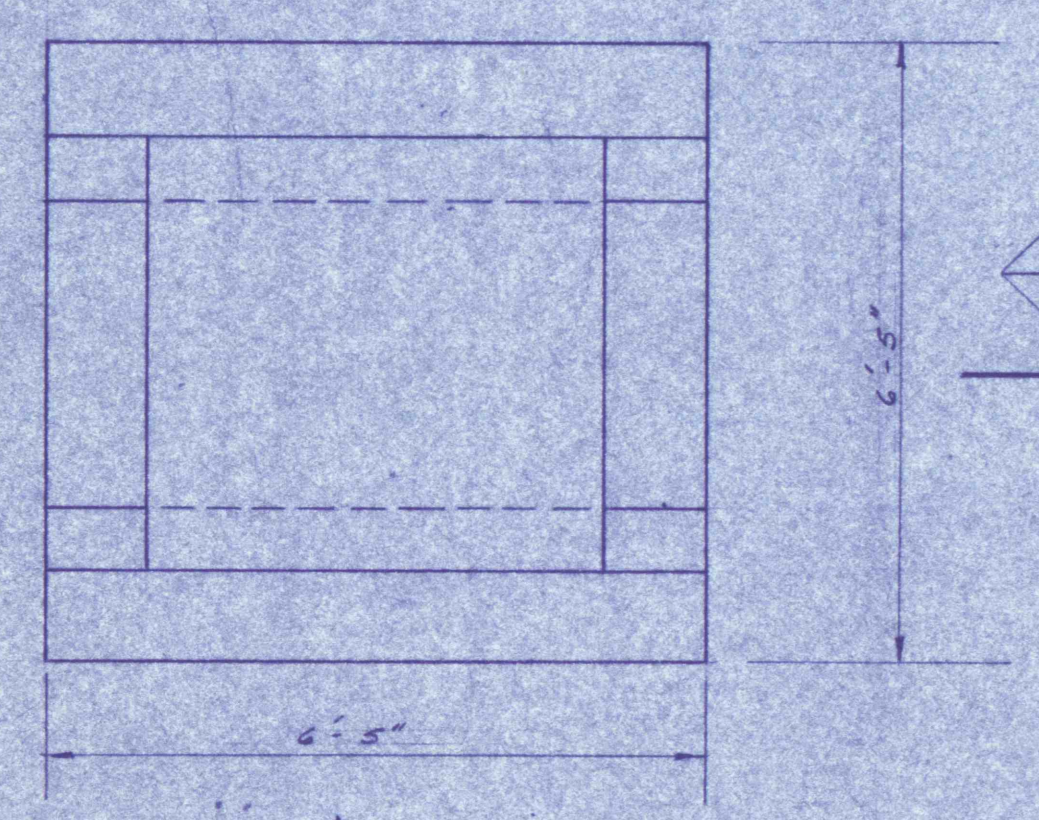
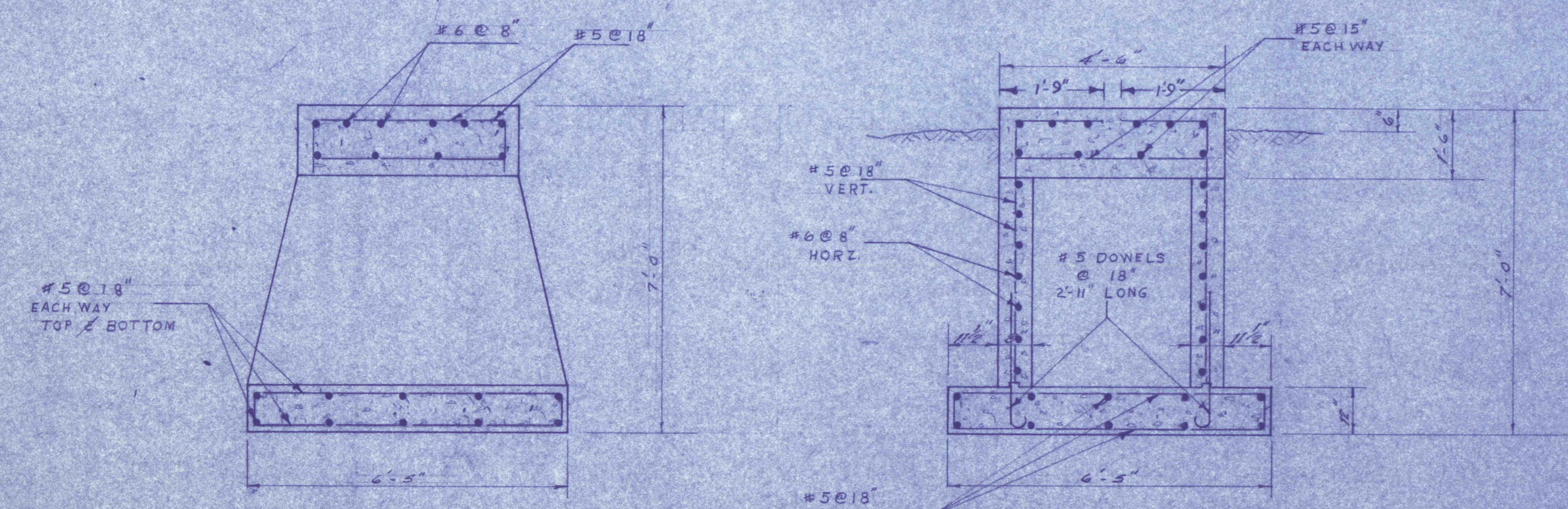


CAPACITY - 100,000 GALLONS  
 TANK DIAMETER - 24'-0"  
 RISER DIAMETER - 3'-0"  
 COLUMN DIAMETER - 1'-4"  
 BALCONY WIDTH - 2'-0"  
 PIER TO BOTTOM OF TANK CAPACITY - 100'-0"  
 PIER TO TOP OF TANK CAPACITY - 124'-0"



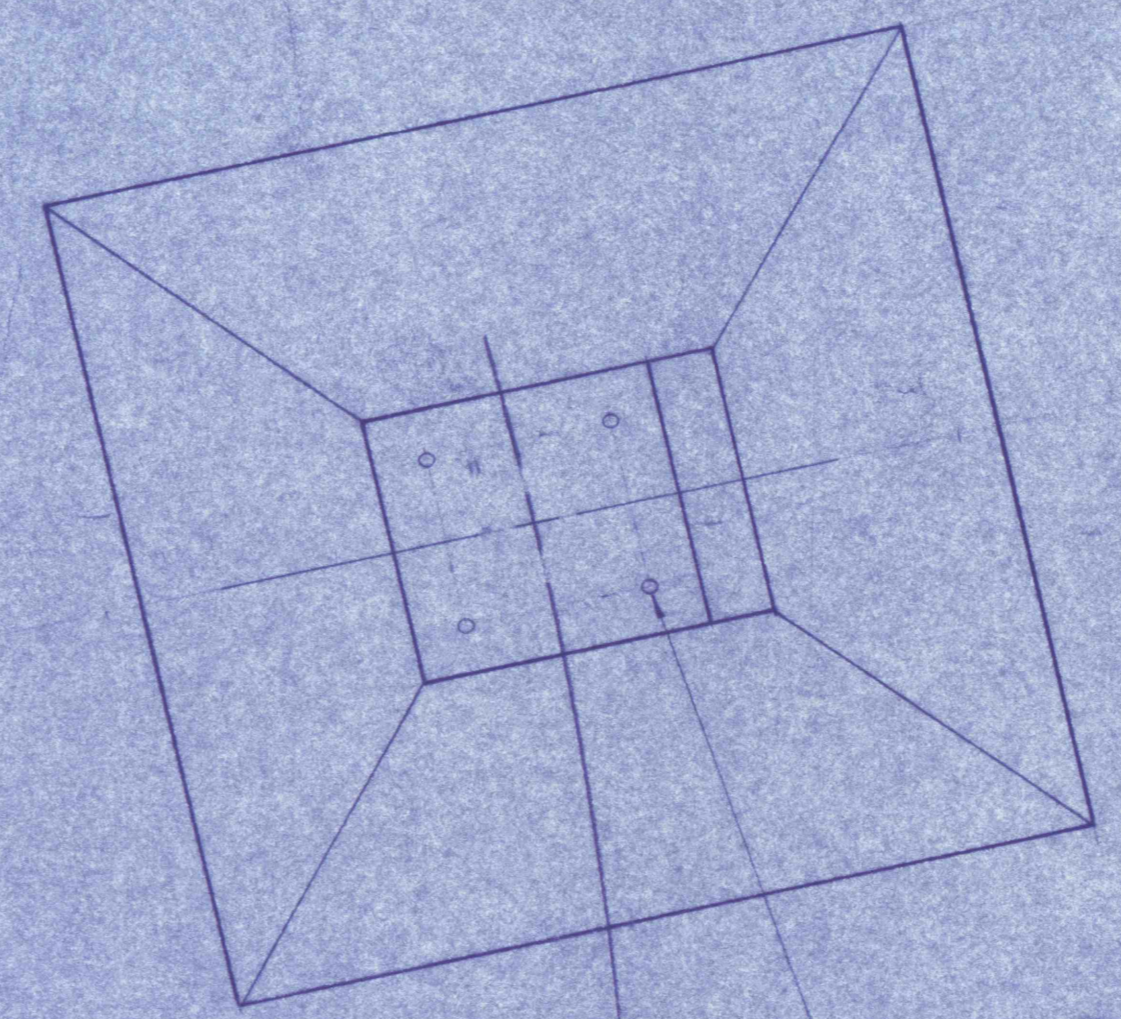
PLAN  
 SCALE: 1/2" = 1'-0"



SECTION A-A  
 SCALE: 1/2" = 1'-0"

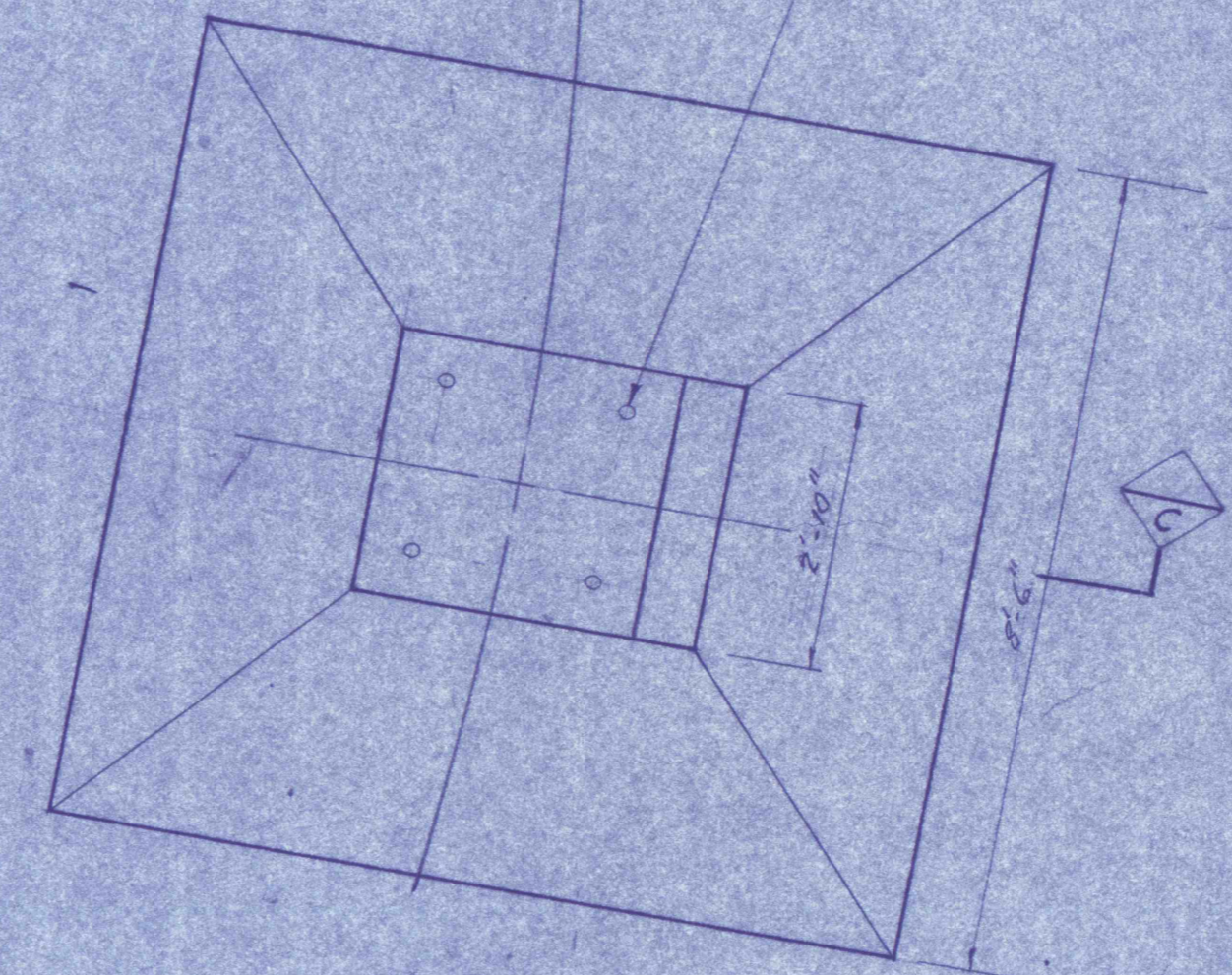
SECTION B-B  
 SCALE: 1/2" = 1'-0"

CENTER PIER (1 REQUIRED)

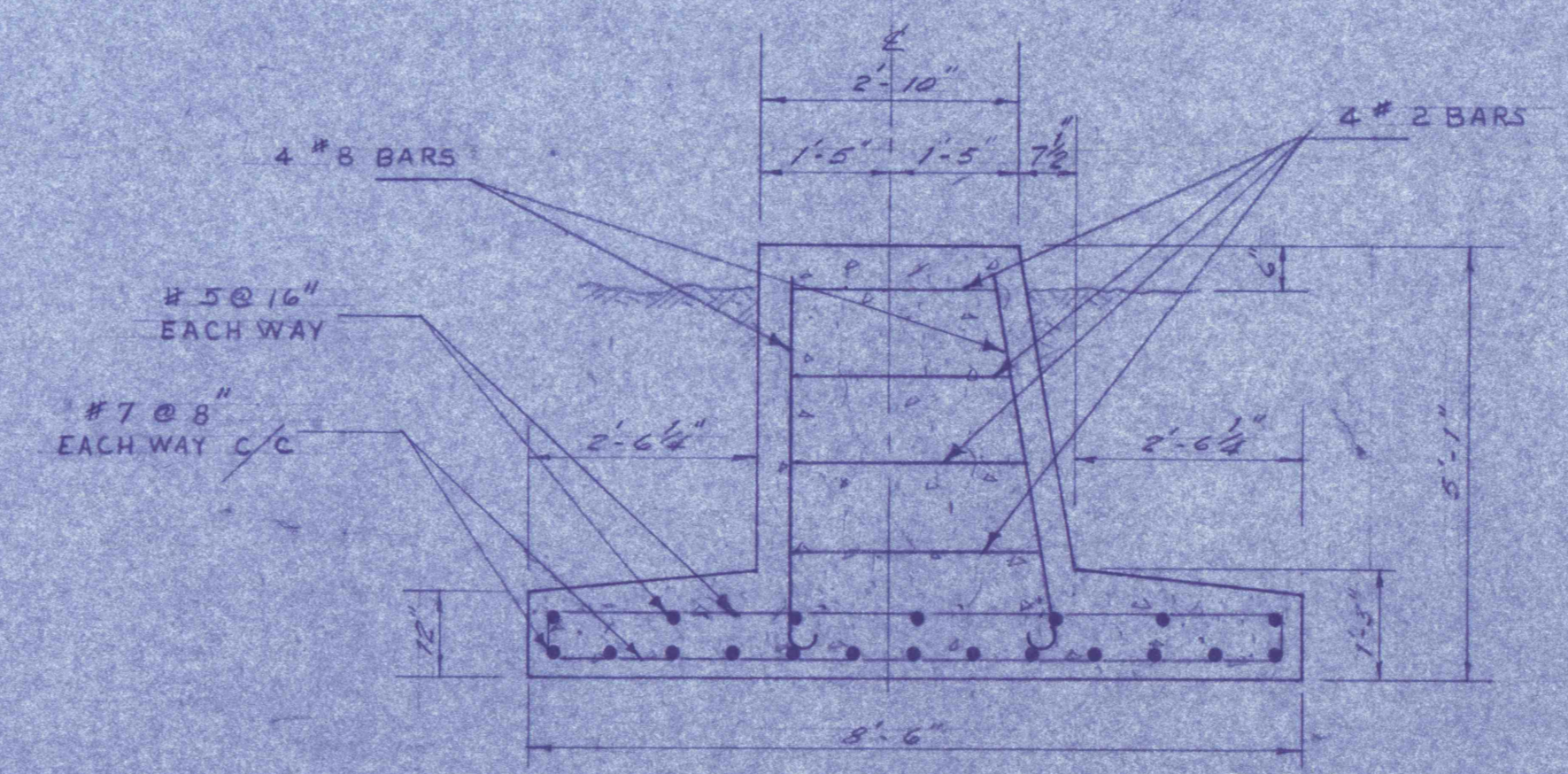


41' - 3" RADIUS

BOLT PATTERN FROM TEMPLATE SUPPLIED BY TANK MANUFACTURER



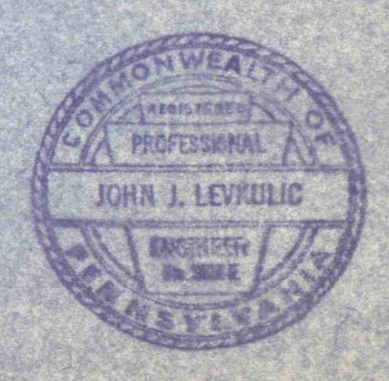
PLAN  
 SCALE: 1/2" = 1'-0"



SECTION C-C  
 SCALE: 1/2" = 1'-0"

COLUMN PIERS (4 REQUIRED)

PRE-FINAL



REVISIONS	
<b>WATER STORAGE TANK</b>	
CONSTRUCTION OF TREATMENT FACILITIES FOR ACID MINE DRAINAGE RAUSCH CREEK WATERSHED SCHUYLKILL COUNTY PENNSYLVANIA	
JOB NO. 8808	DATE: 10-30-89
SCALE: AS NOTED	DRAWN: J.C.A.
APPROVED: J.C.A.	DRAWING NO. C-36
<b>ANTHRACITE RESEARCH &amp; DEVELOPMENT CO., INC.</b> consulting engineers POTTSVILLE PENNSYLVANIA TAMAGUA	