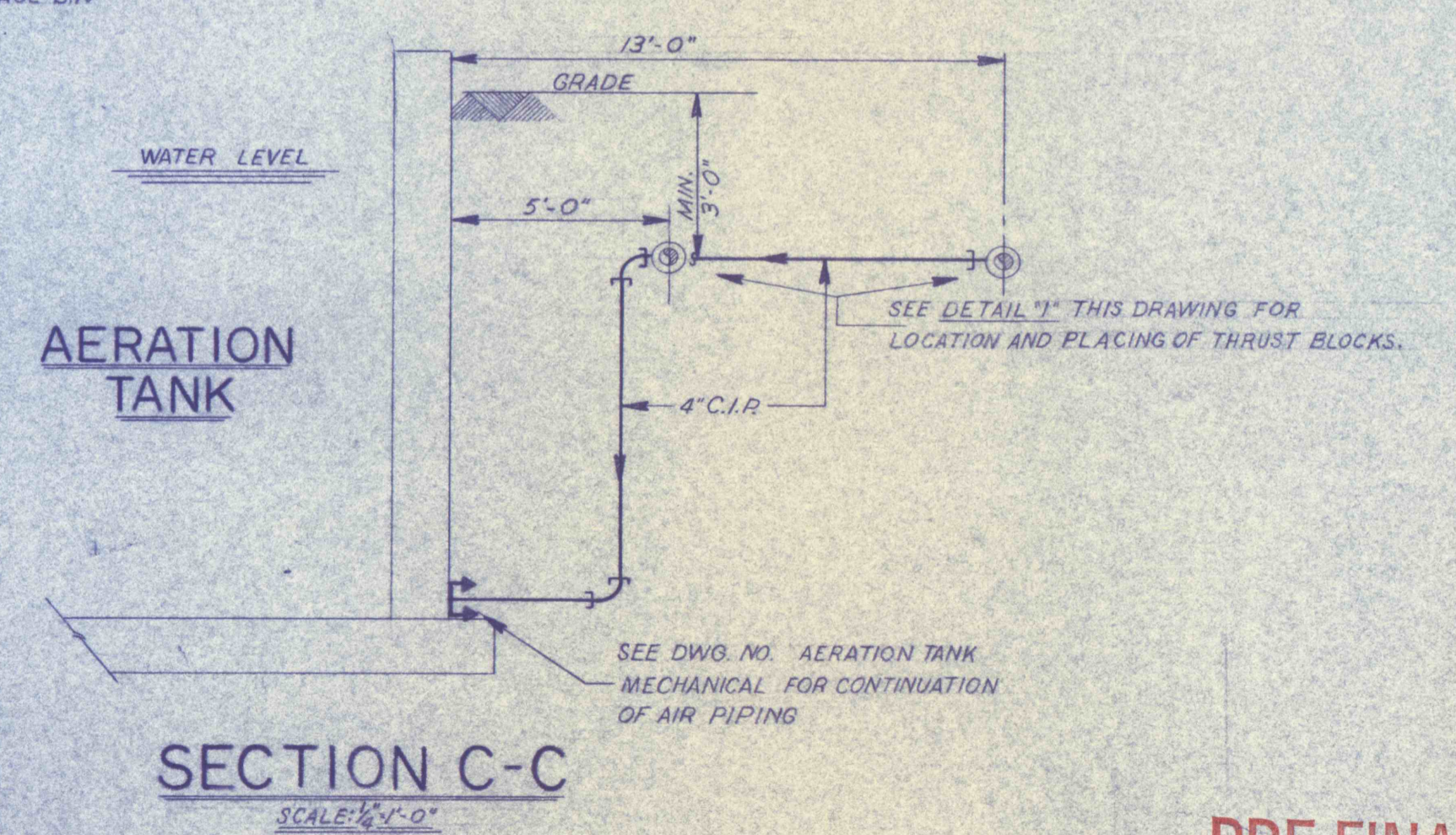
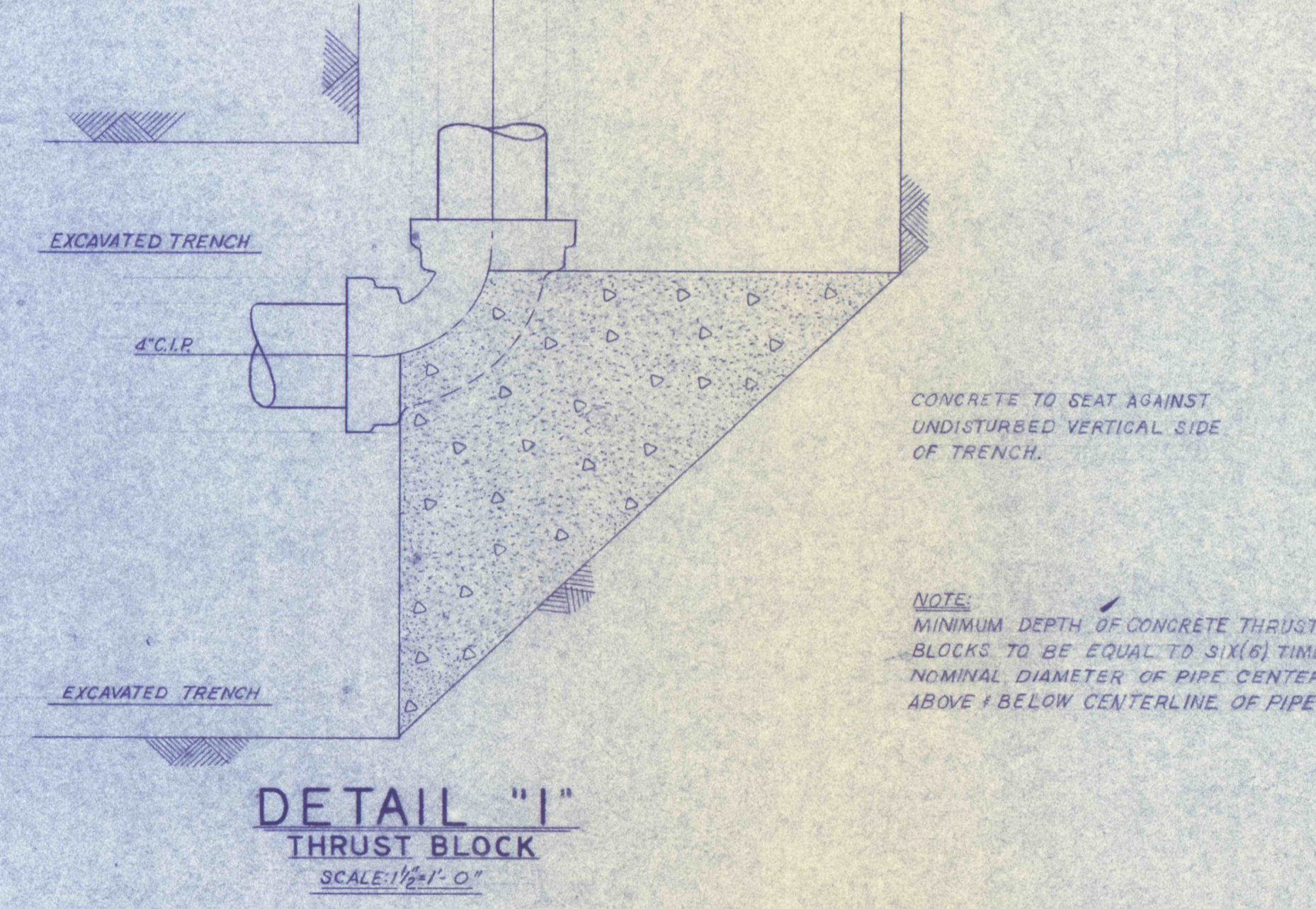
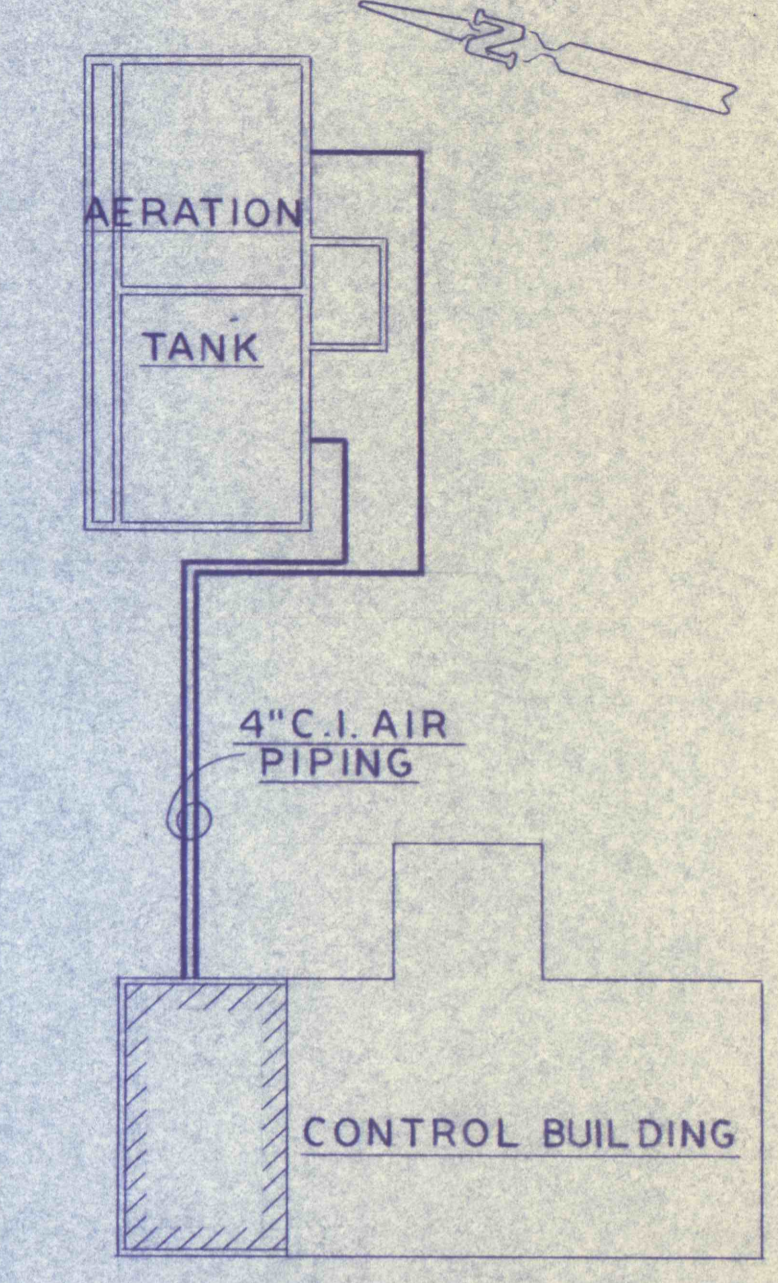
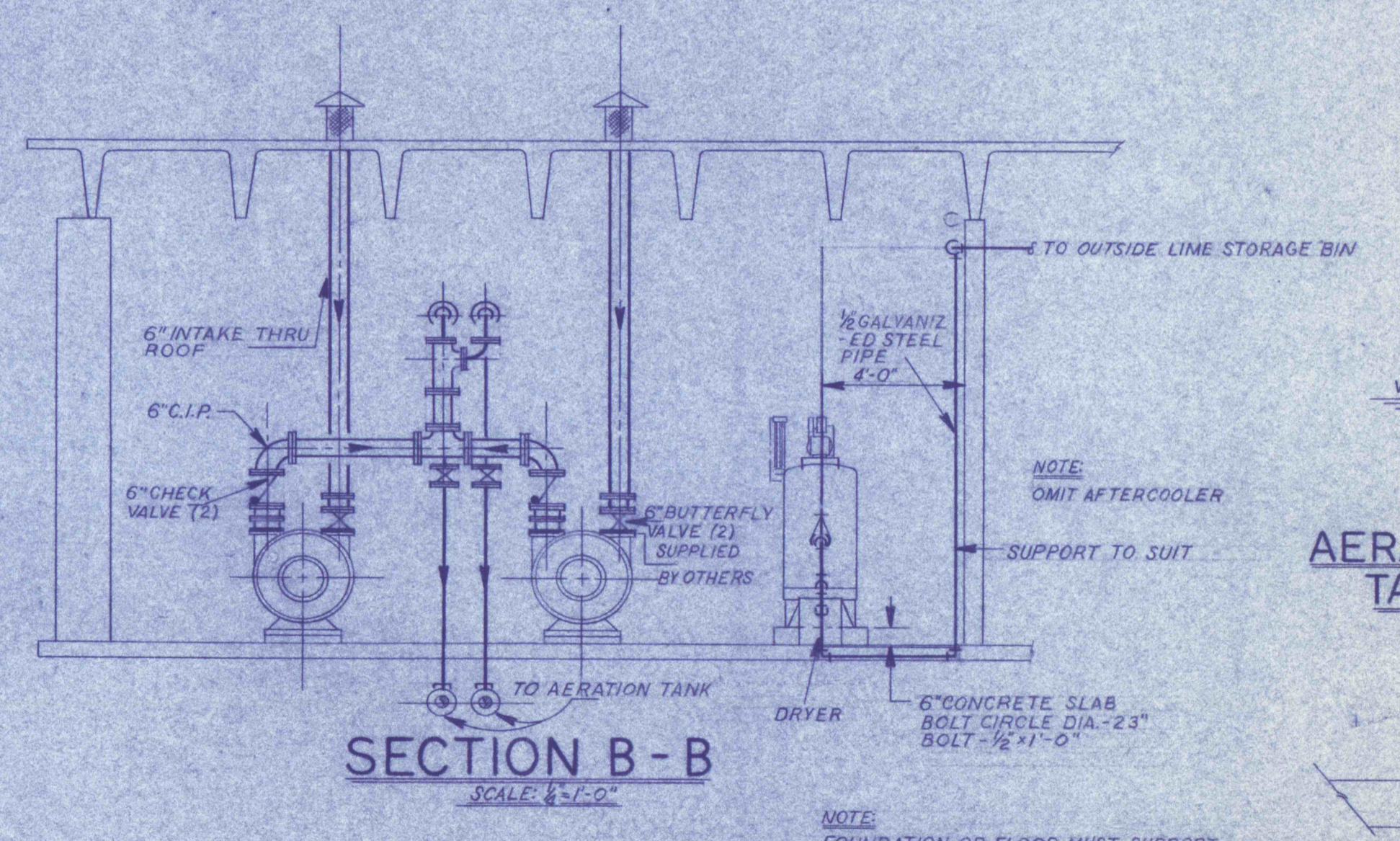
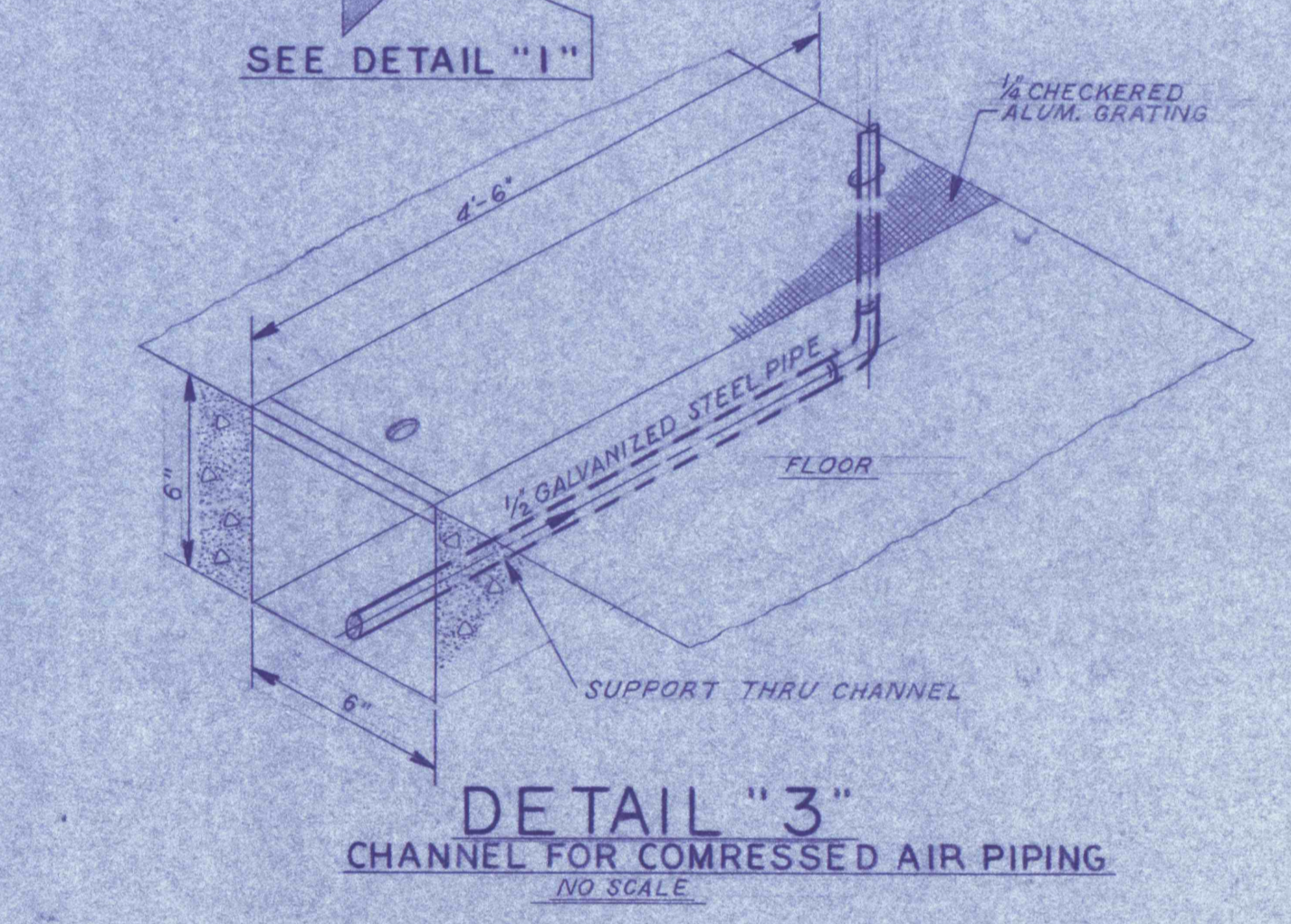
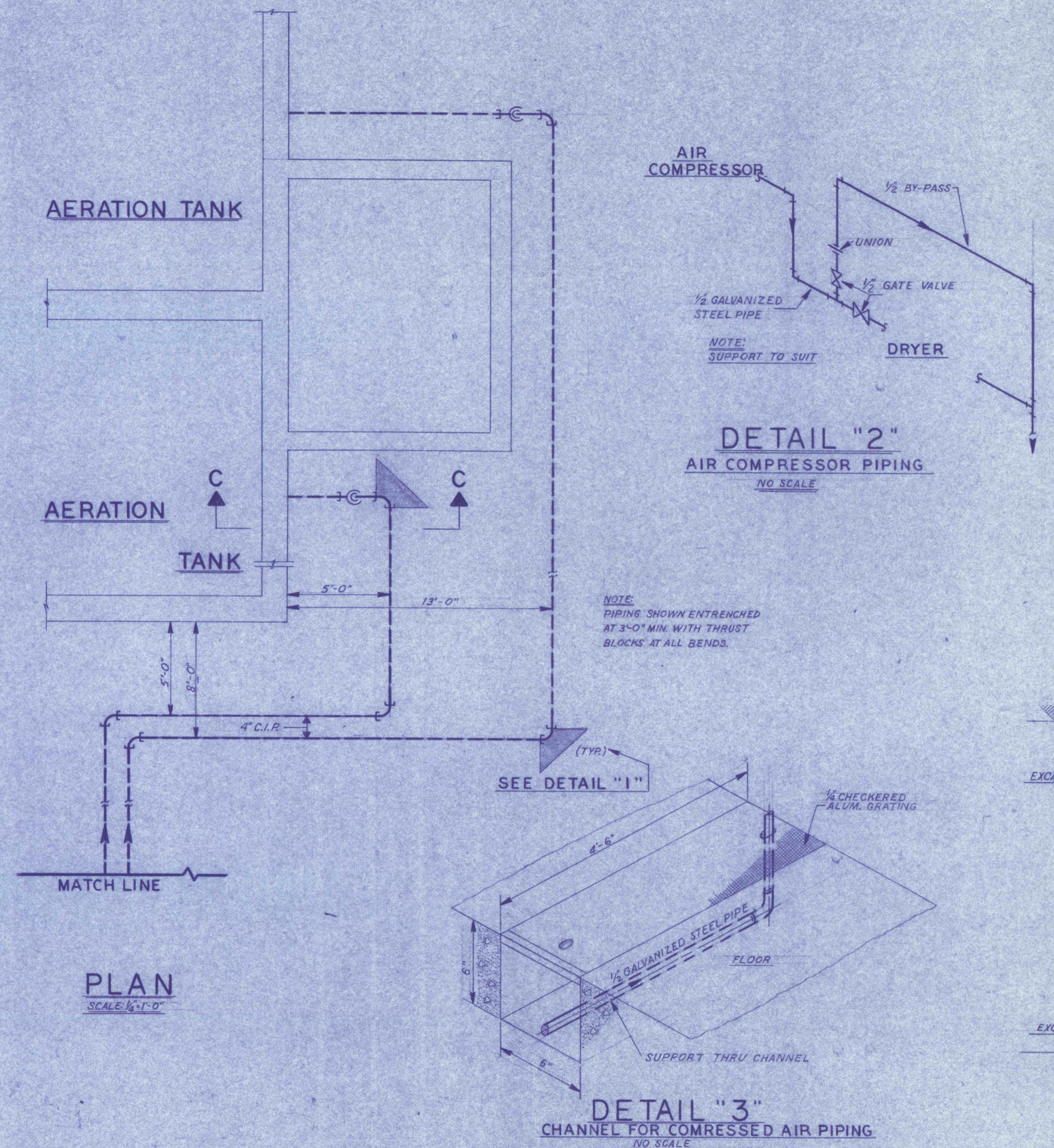
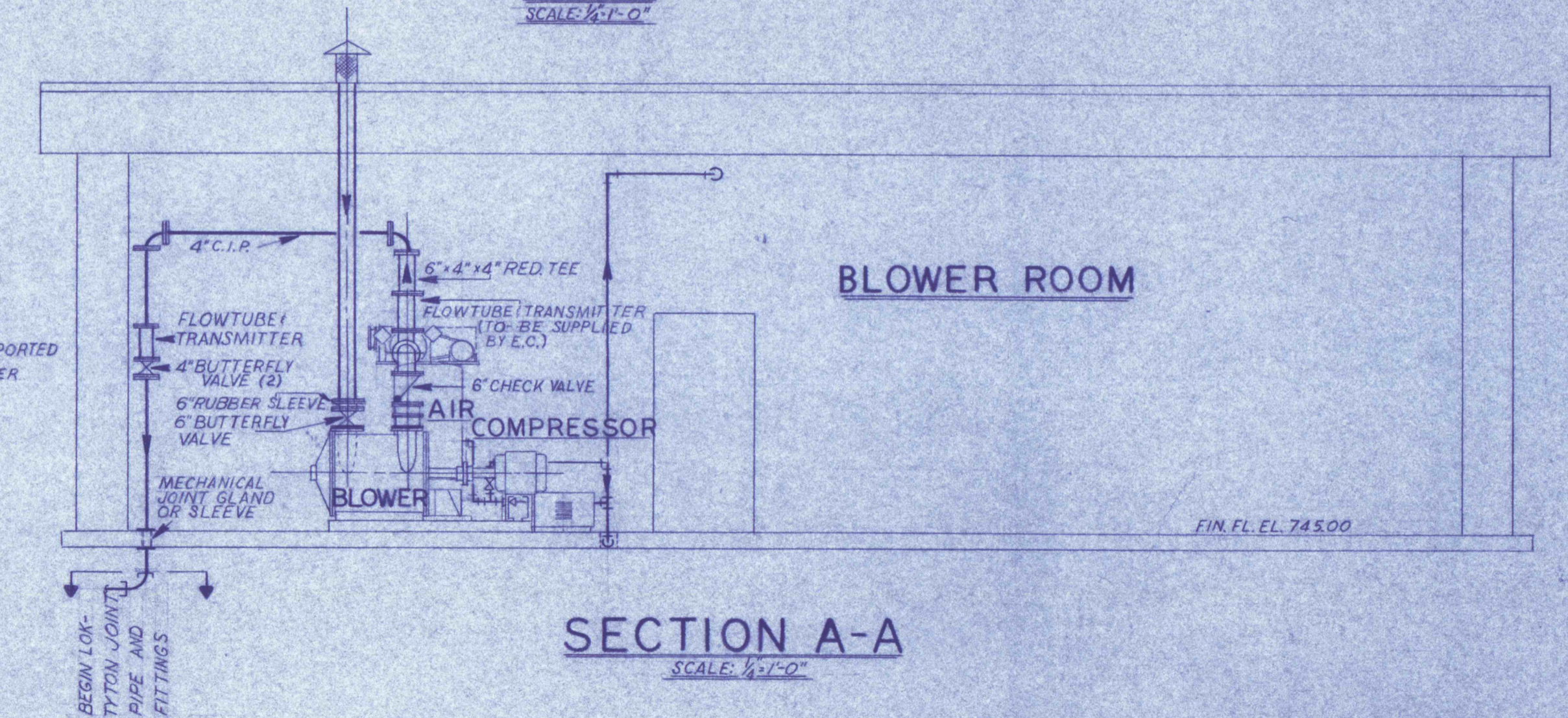
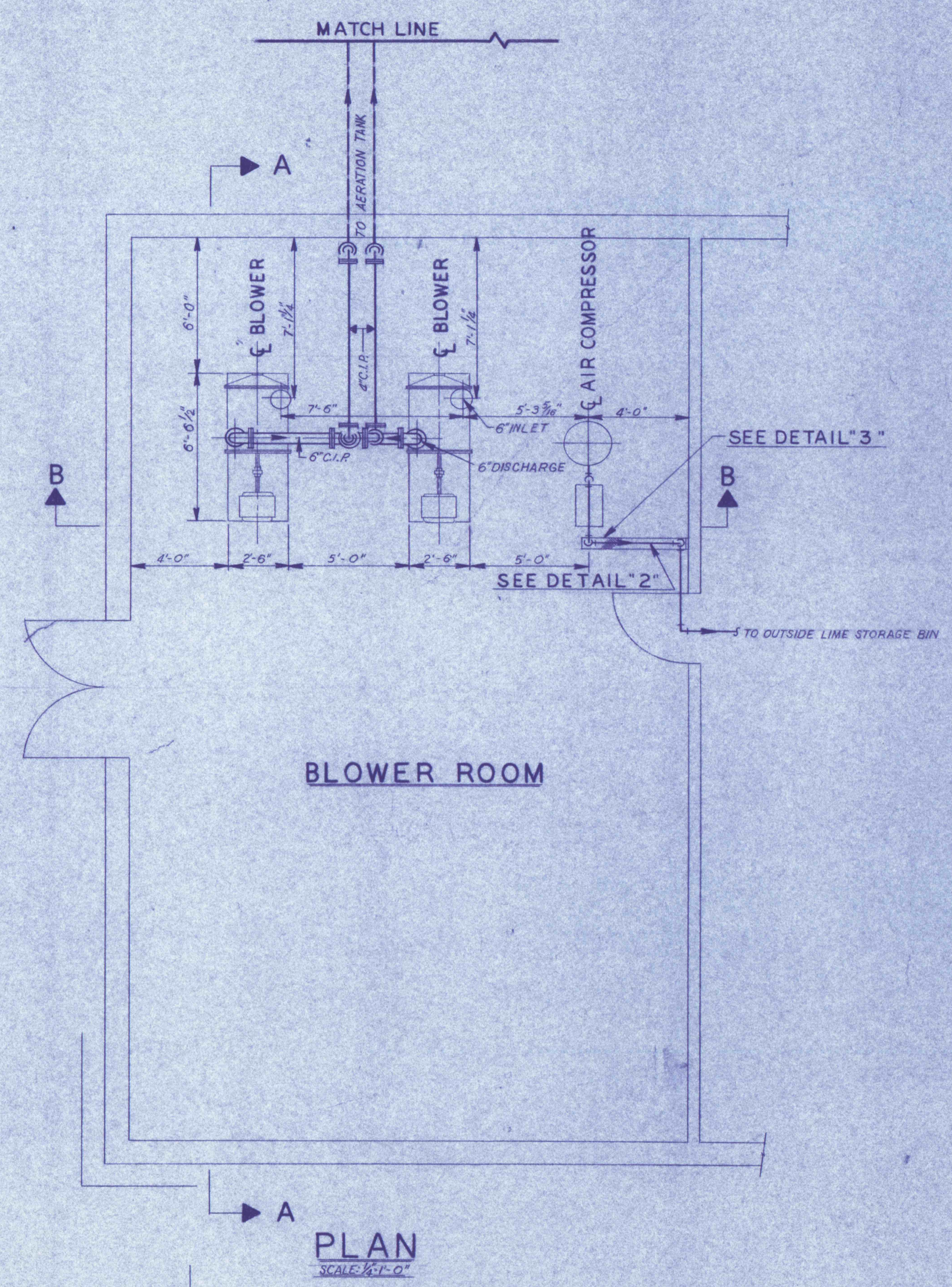
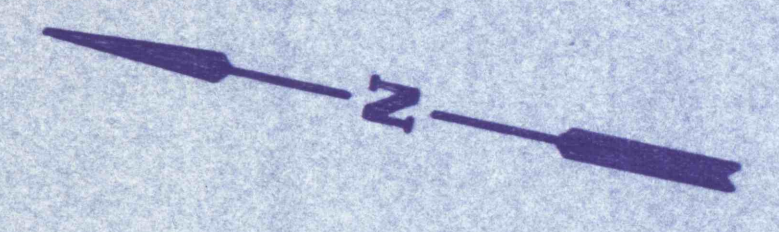


GENERAL NOTES:  
 1. WATER-TIGHT FLANGED SLEEVE FOR ALL PIPES THRU WALLS OR SLABS BELOW WATER LEVEL.



NOTE:  
 FOUNDATION OR FLOOR MUST SUPPORT COMPRESSOR EVENLY AT ALL RECOVER FEET. IF NECESSARY SHIM OR GROUT UP UNDER THIRD FOOT TO PROVIDE EQUAL SUPPORT. TO AVOID PUTTING STRAIN IN RECEIVER WHEN TIGHTENING FOUNDATION BOLTS SHOULD PROJEKT THRU NUTS AT LEAST 1/2" TO ALLOW FOR LEVELING.

PRE-FINAL

REVISIONS	
<b>BLOWER ROOM</b>	
CONSTRUCTION OF TREATMENT FACILITIES FOR ACID MINE DRAINAGE RAUSCH CREEK WATERSHED SCHUYLKILL COUNTY PENNSYLVANIA	
JOB NO: 6805 DATE: NOV. 1969 SCALE: NOTED DRAWN: J.S.N. APPROVED: H.R.J.J.L.	DRAWING NO: <b>C-34</b>
ANTHRACITE RESEARCH & DEVELOPMENT CO. INC. consulting engineers POTTESVILLE PENNSYLVANIA TAMAQUA	

