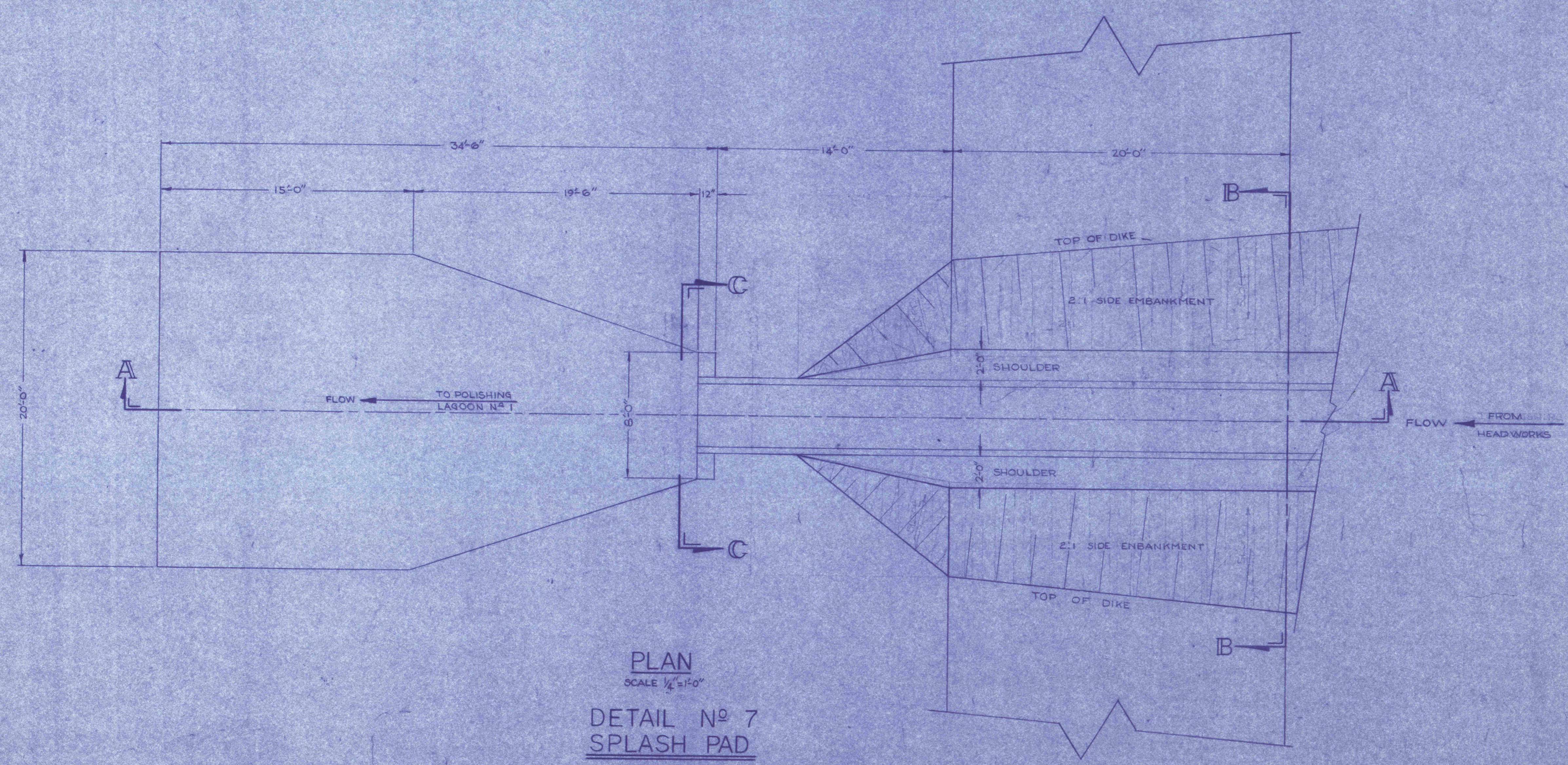
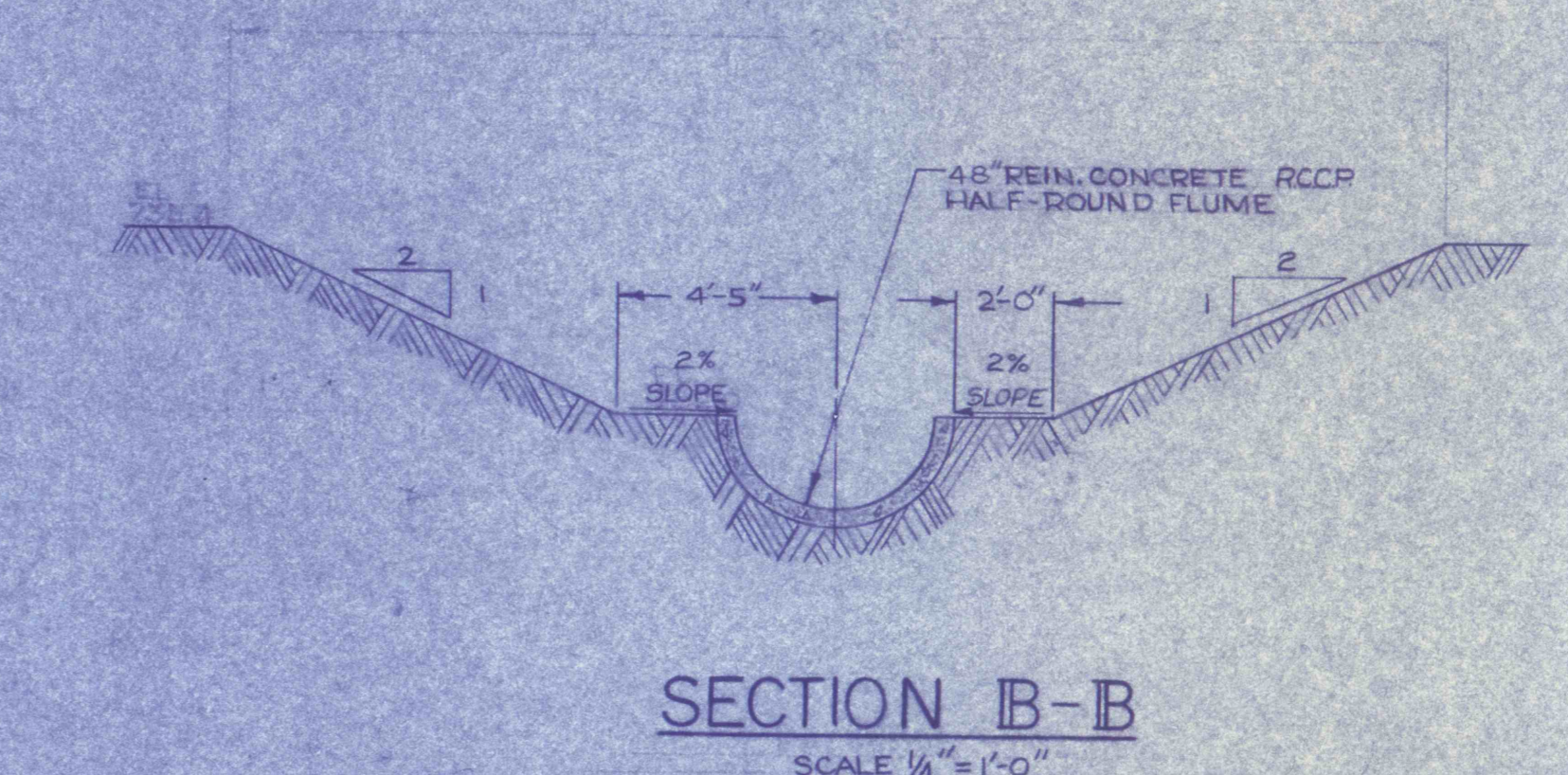
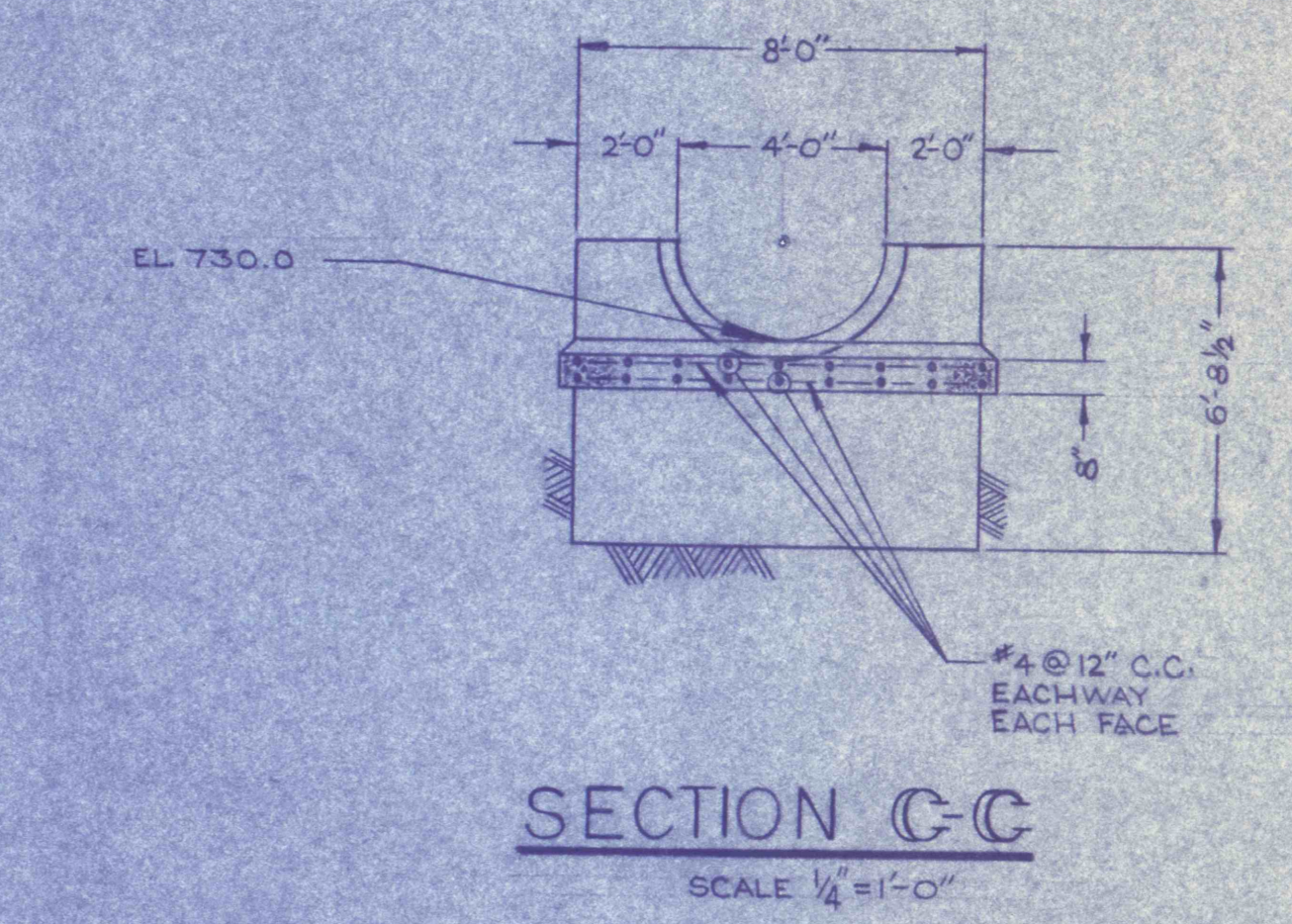
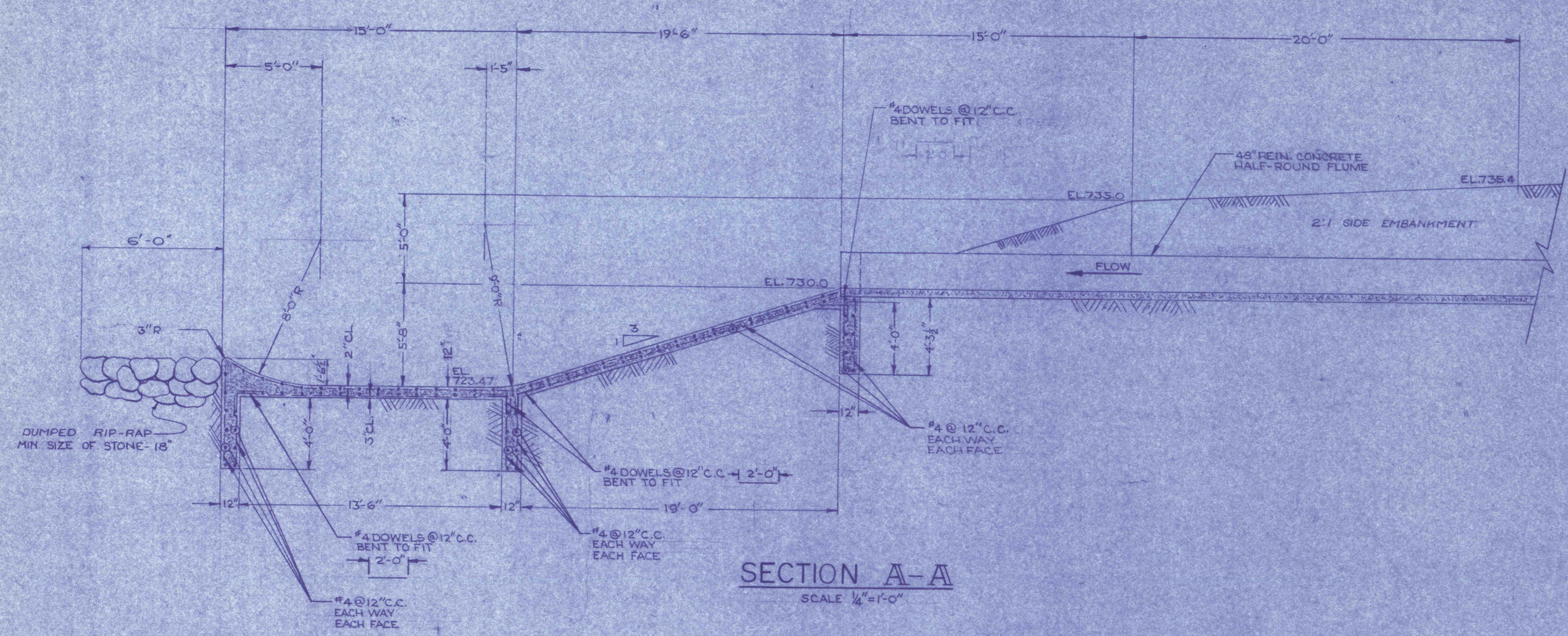


GENERAL NOTES

1. REFER TO DRAWING NO. FOR LOCATION OF SPILLWAY.



PRE-FINAL



REVISIONS	
CONSTRUCTION DETAILS	
CONSTRUCTION OF TREATMENT FACILITIES FOR ACID MINE DRAINAGE RAUSCH CREEK WATERSHED SCHUYLKILL COUNTY, PENNSYLVANIA	
ANTHRACITE RESEARCH & DEVELOPMENT CO. INC. CONSULTING ENGINEERS POTTSVILLE PENNSYLVANIA	JOB NO. 6606 DATE: NOV 1969 SCALE(S) NOTED DRAWN: J.M. HAZTON APPROVED: T.H.R. J.L. DRAWING NO. <b>C-24</b>