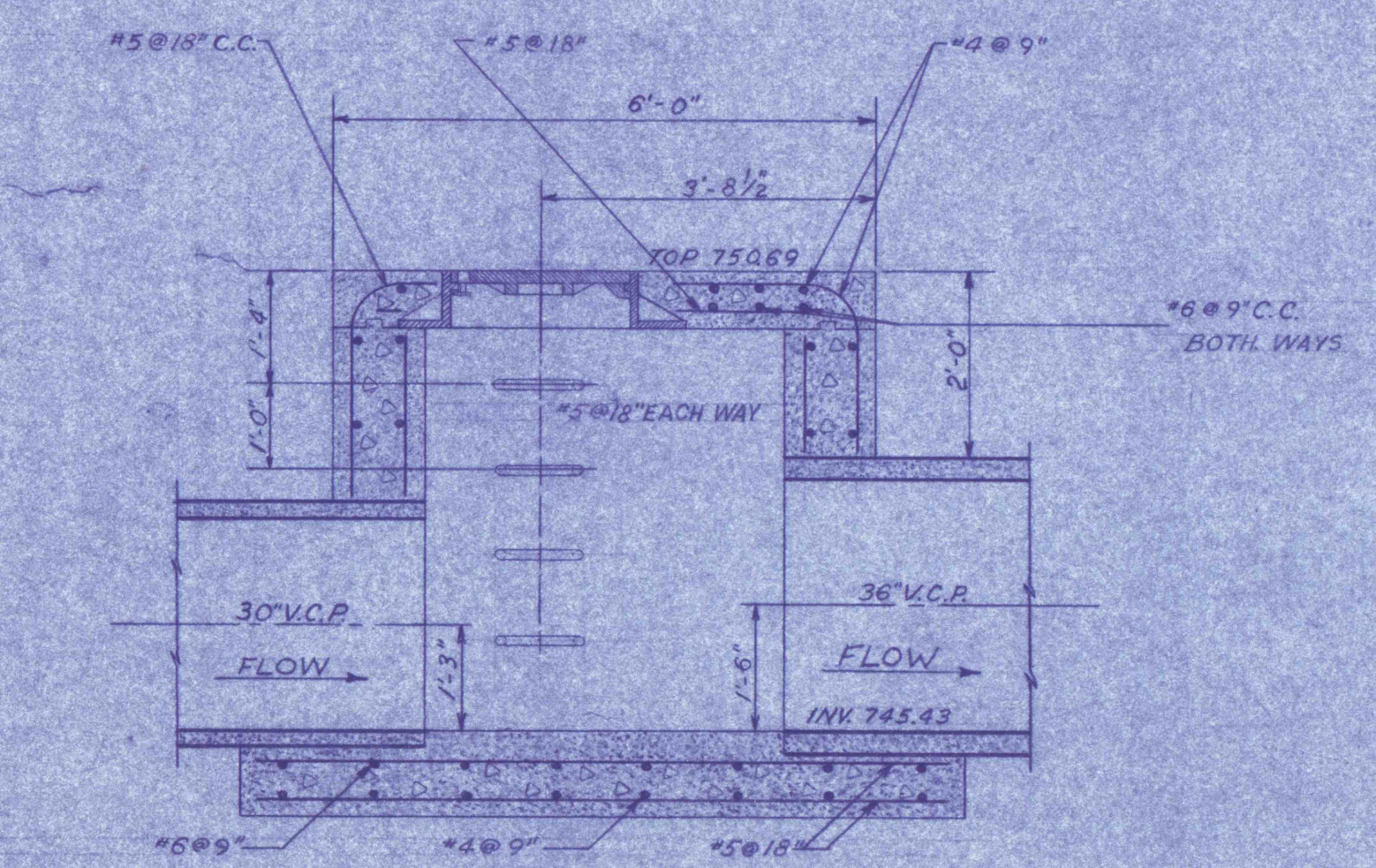
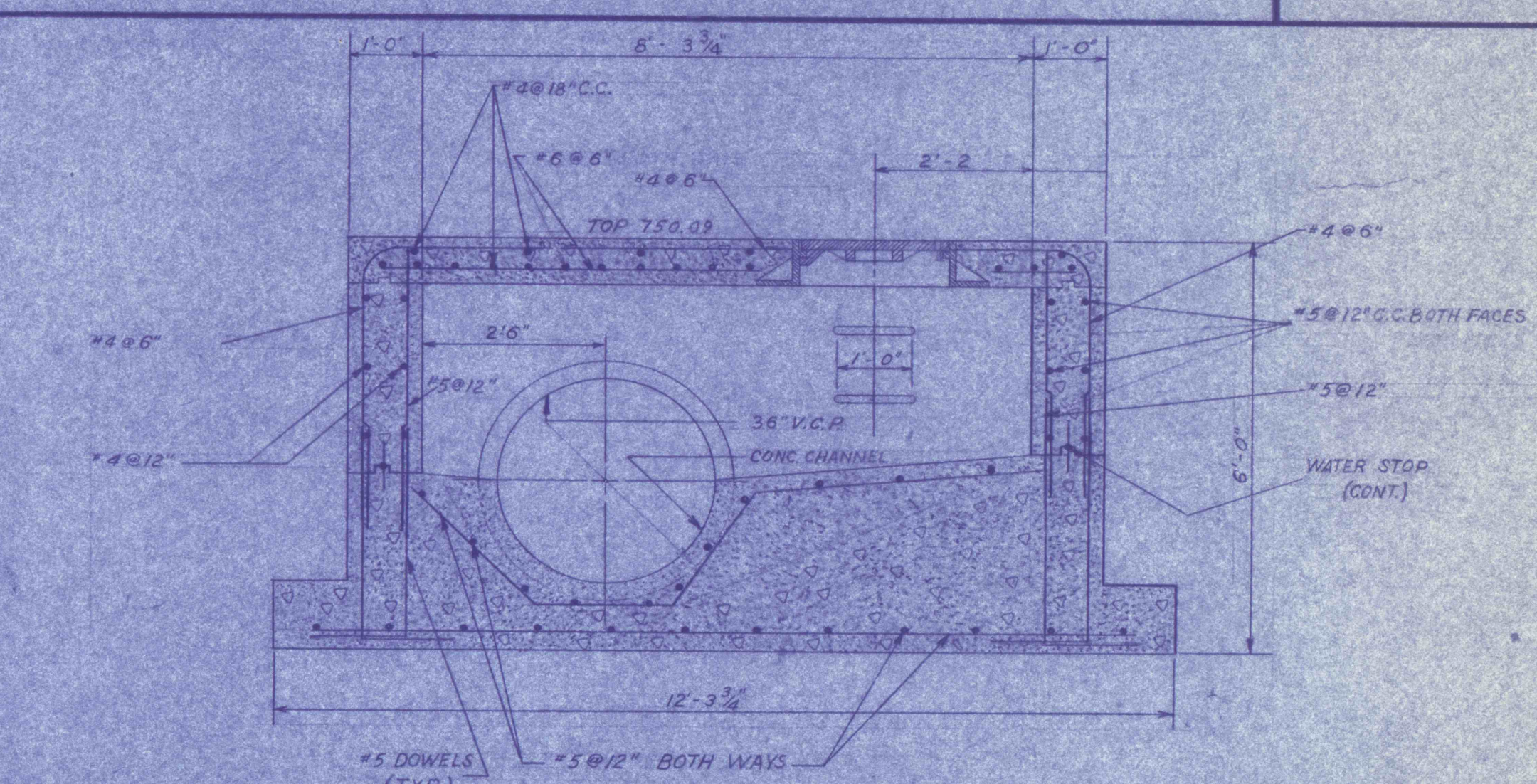


DETAIL A
SCALE: 1"=1'-0"

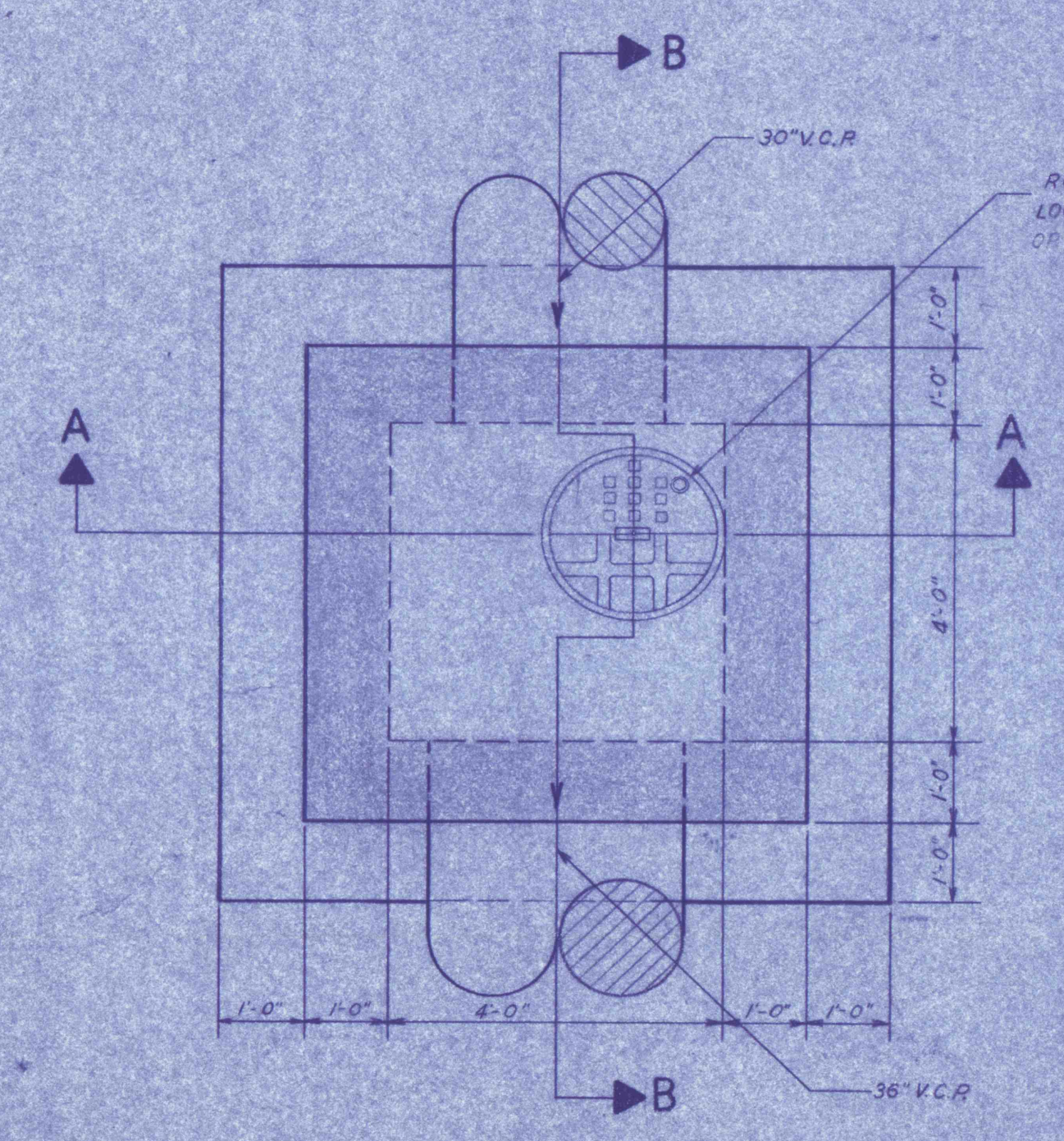


SECTION B-B
SCALE: 1/2"=1'-0"

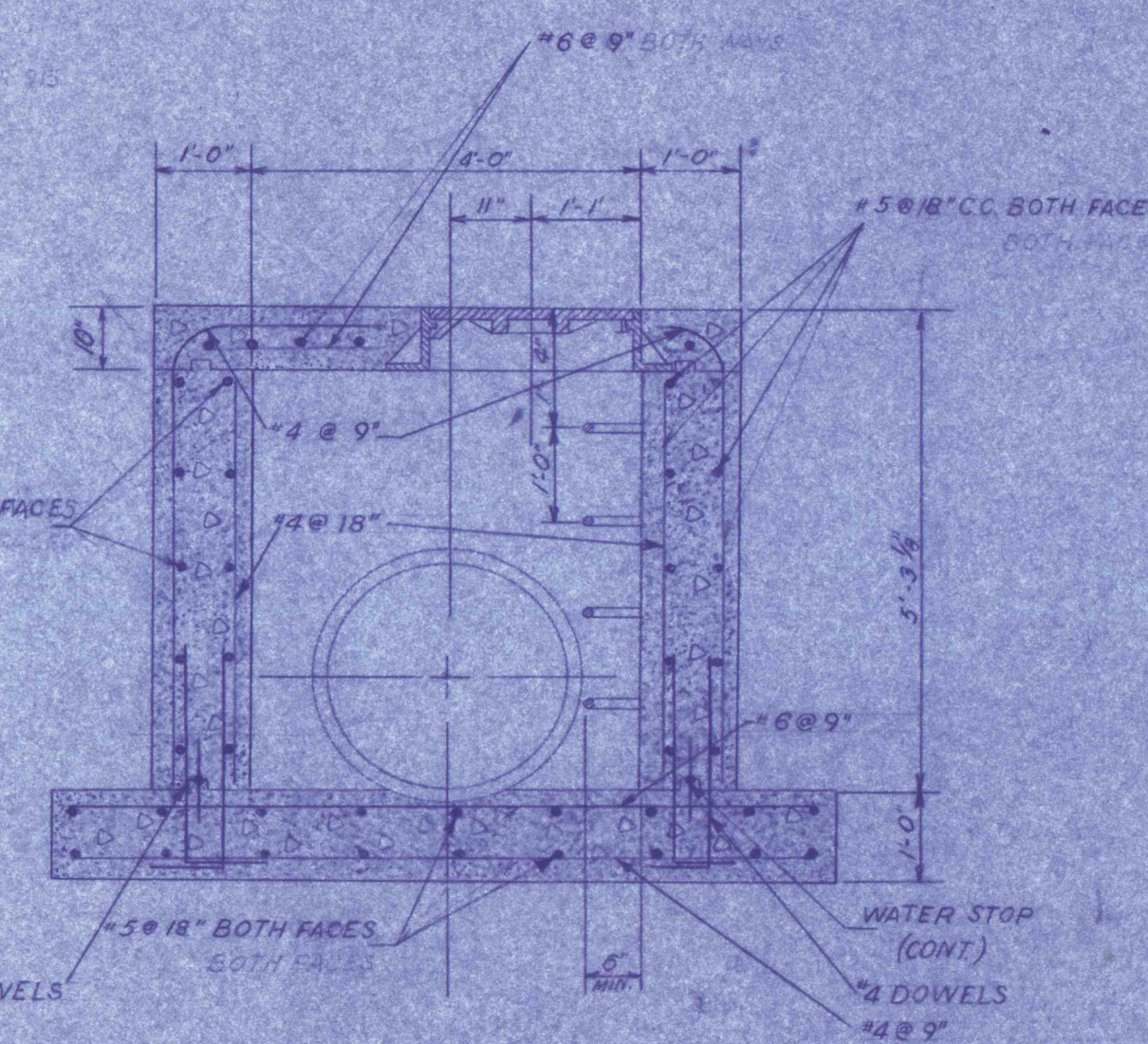


SECTION B-B
SCALE: 1/2"=1'-0"

GENERAL NOTES:
1. TYPICAL FOR ALL BOXES: 15 GALV. WROUGHT IRON OR ALUM. LADDER RUNGS MIN. 12" WIDTH ENDS SET IN CONCRETE TO BE COATED WITH BITUMASTIC PASTE.
2. ALL CONSTRUCTION JOINTS BELOW WATER LEVEL TO HAVE 9" WATER STOPS CONTINUOUS.

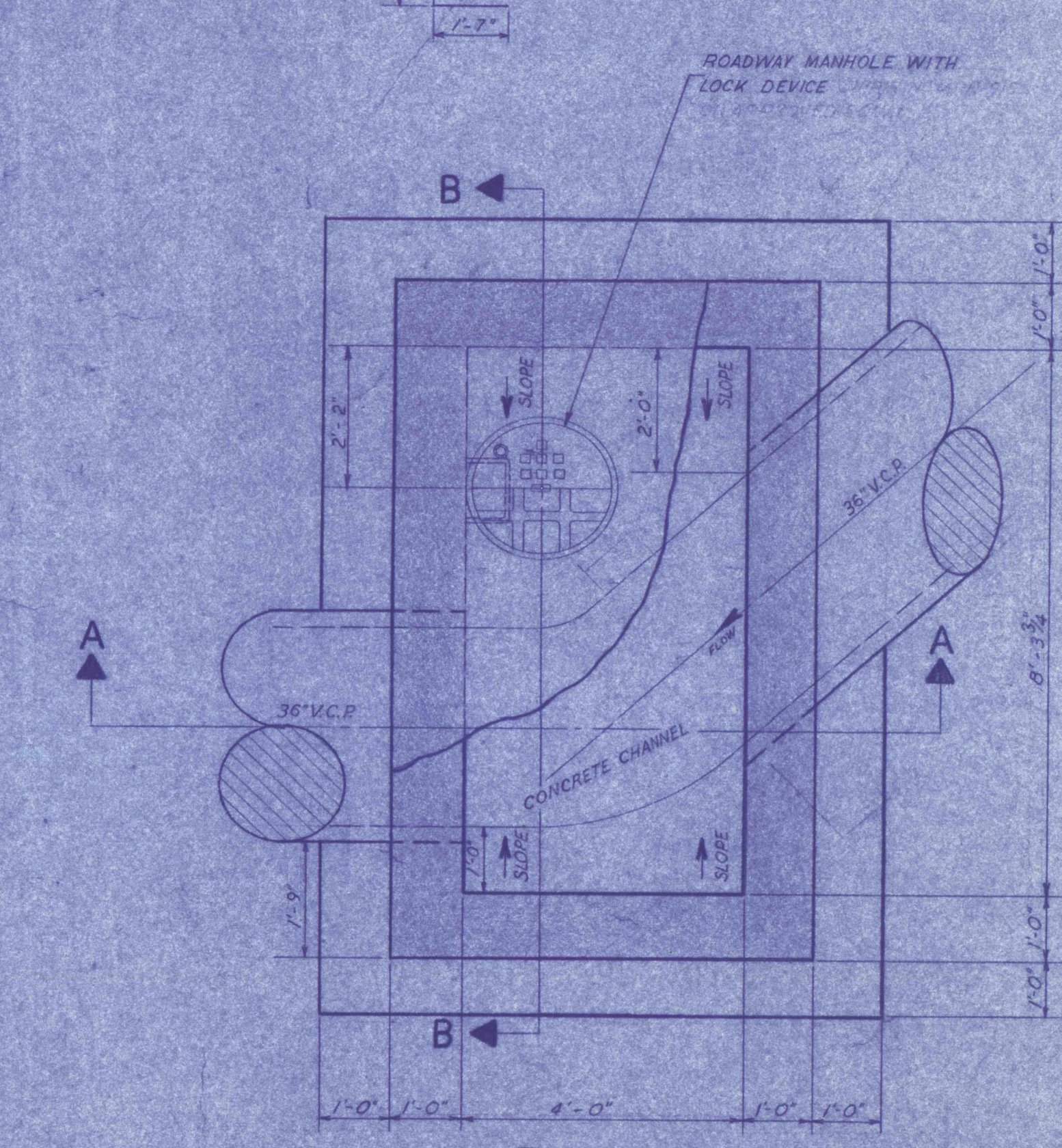


PLAN
SCALE: 1/2"=1'-0"

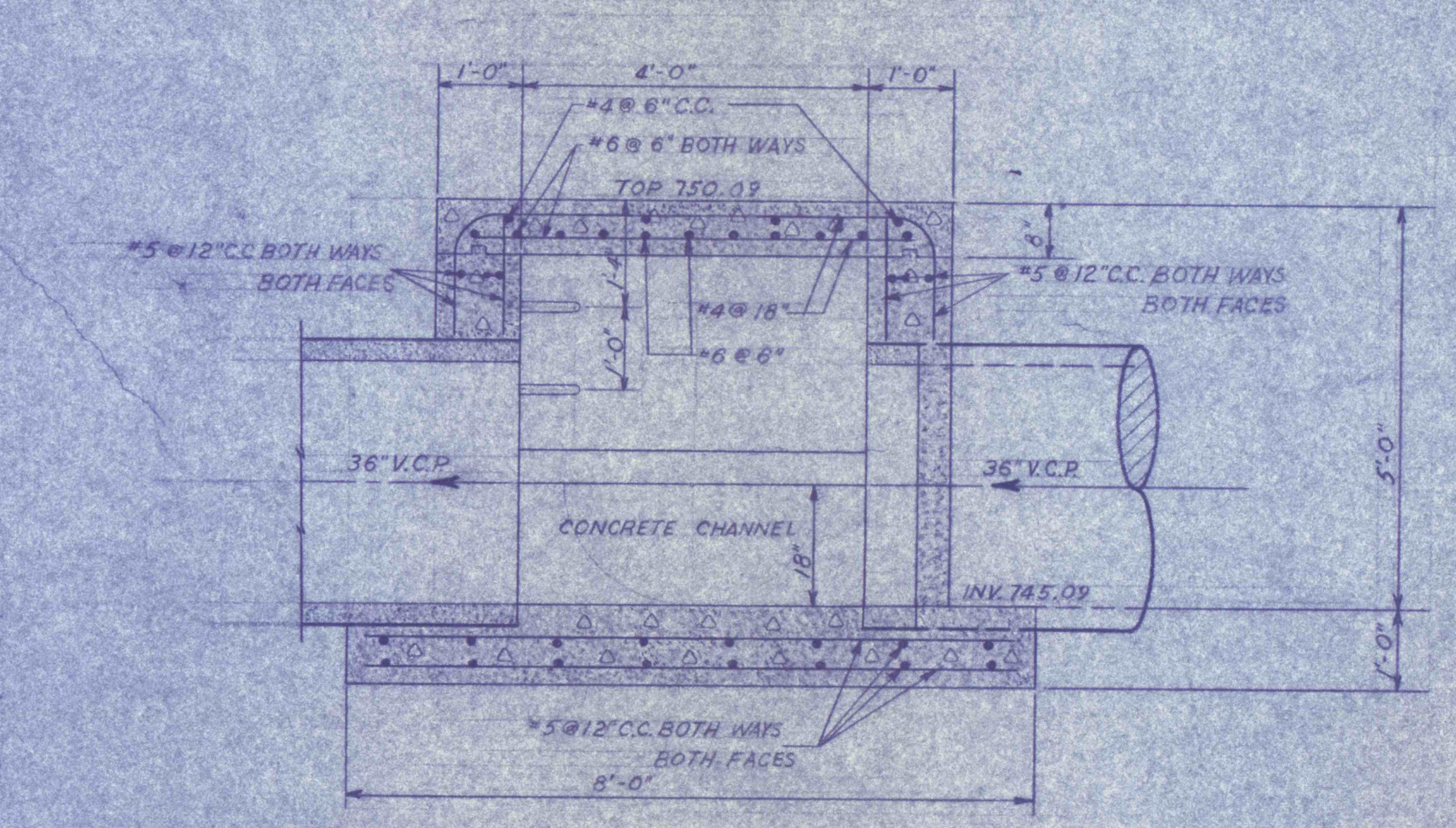


SECTION A-A
SCALE: 1/2"=1'-0"

**DETAIL NO. 1
INTERCEPTOR BOX**



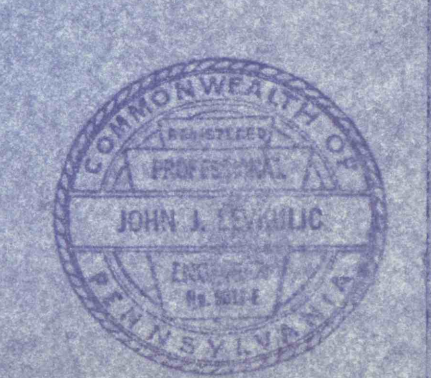
PLAN
SCALE: 1/2"=1'-0"



SECTION A-A
SCALE: 1/2"=1'-0"

**DETAIL NO. 2
INTERCEPTOR BOX**

PRE-FINAL



REVISIONS	

CONSTRUCTION DETAILS	
CONSTRUCTION OF TREATMENT FACILITIES FOR ACID MINE DRAINAGE	
RAUSCH CREEK WATERSHED	
SCHUYLKILL COUNTY	PENNSYLVANIA
ANTRACITE RESEARCH & DEVELOPMENT CO. INC.	
POTTSVILLE	TAMAQUA
PENNSYLVANIA	
JOB NO: 6805	DATE: NOV 1969
SCALE: NOTED	DRAWN: J.S.N.
APPROVED: H.R.J.L.	DRAWING NO: C-22