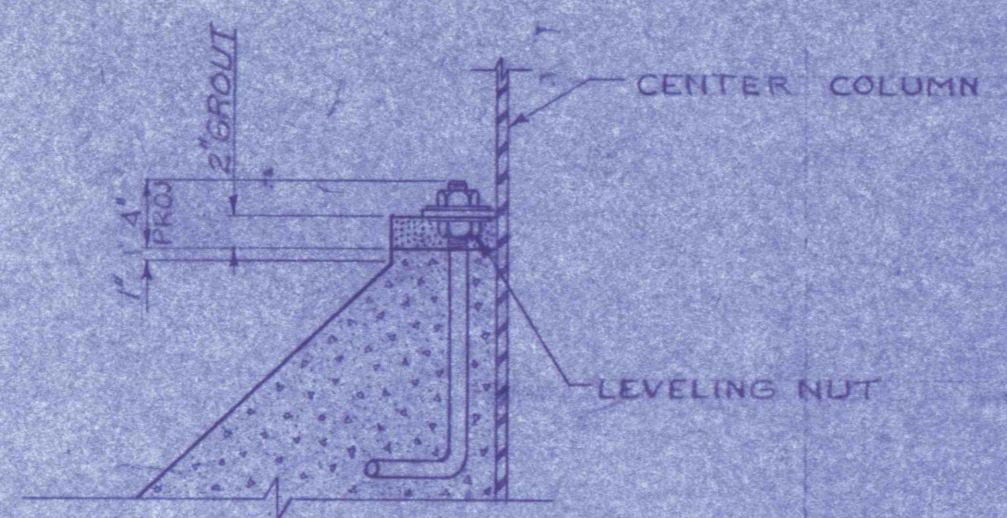
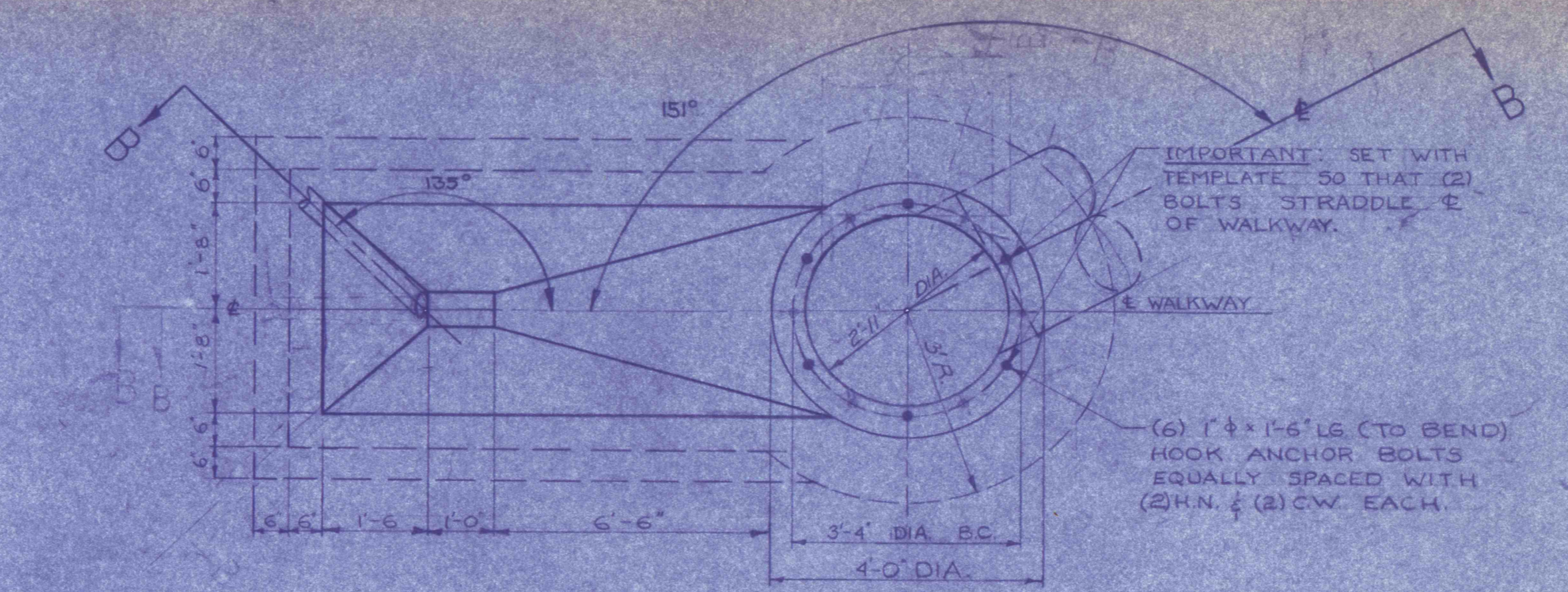


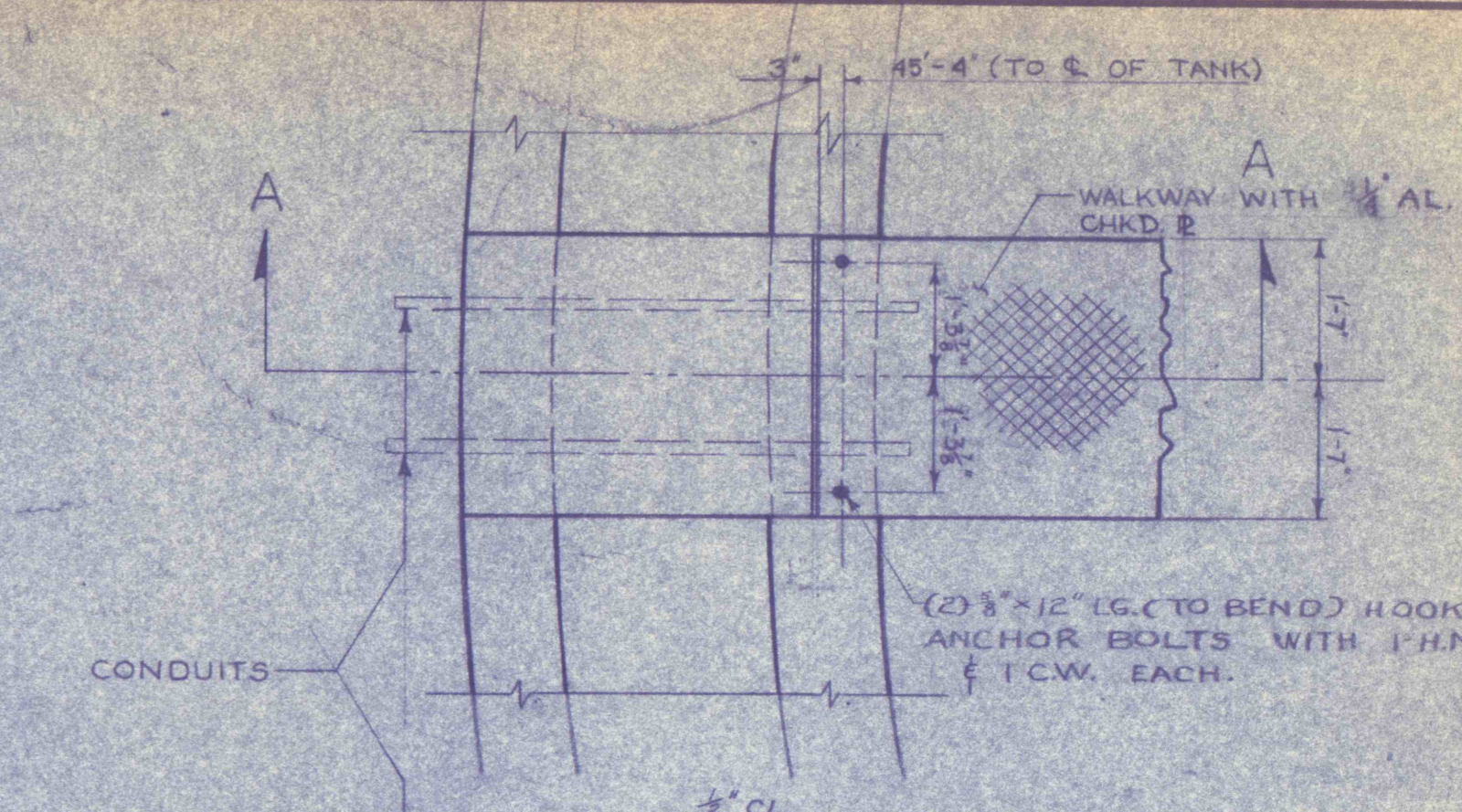
PLAN



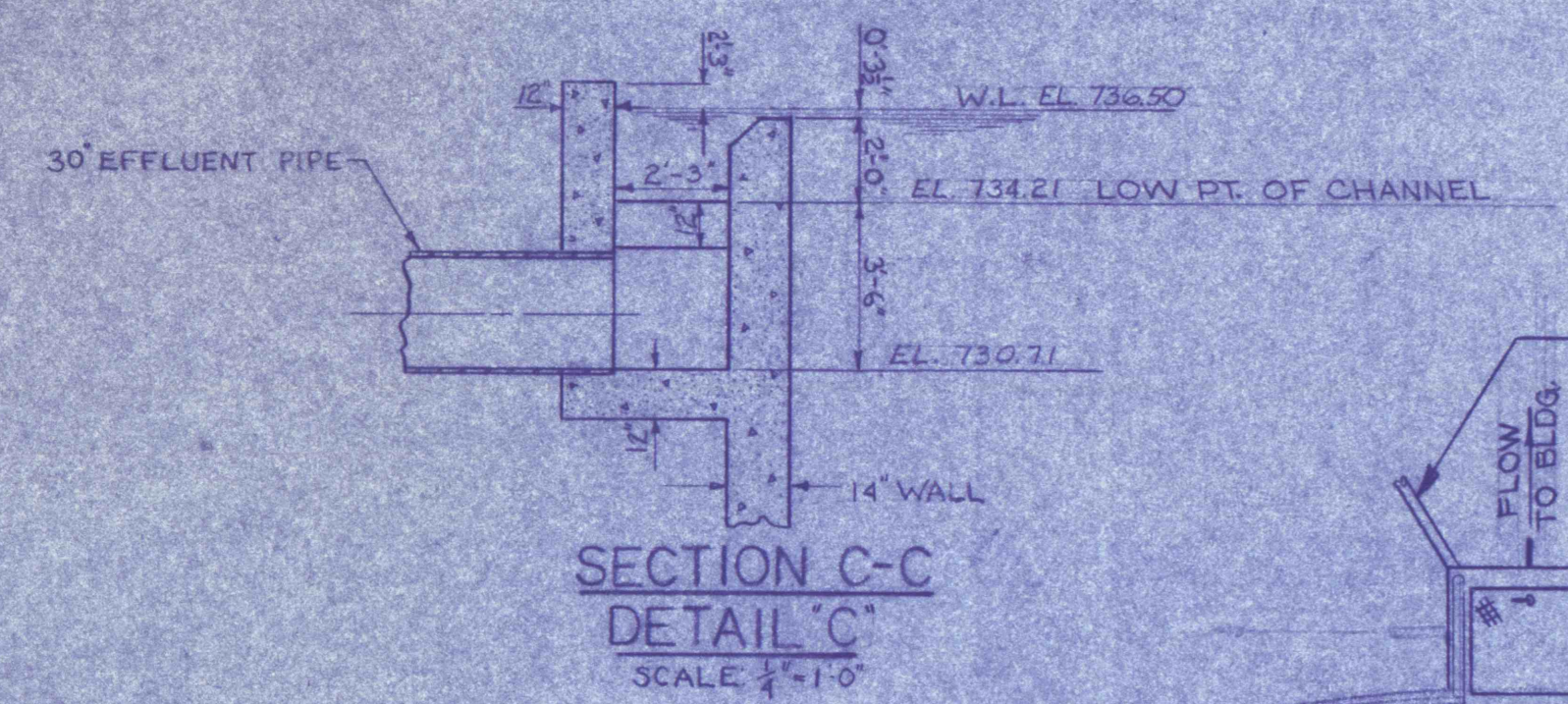
DETAIL D  
SCALE: 1"=1'-0"



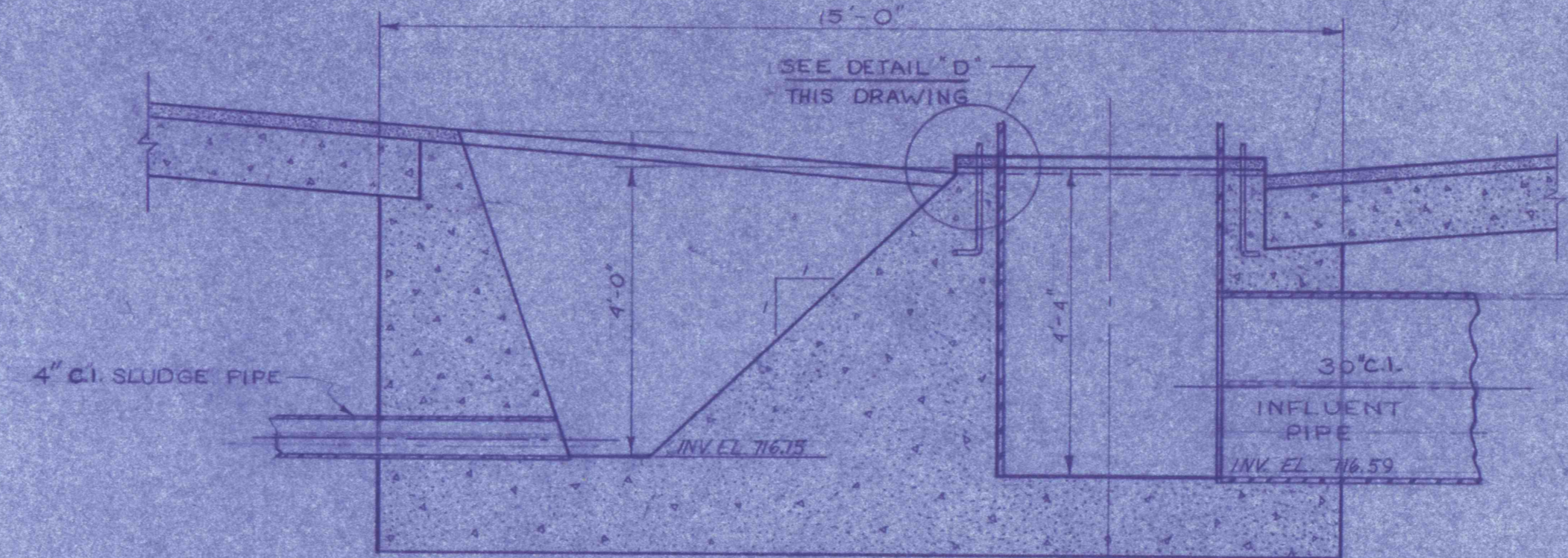
SECTION B-B  
DETAIL OF TANK CENTER  
SCALE: 1/2"=1'-0"



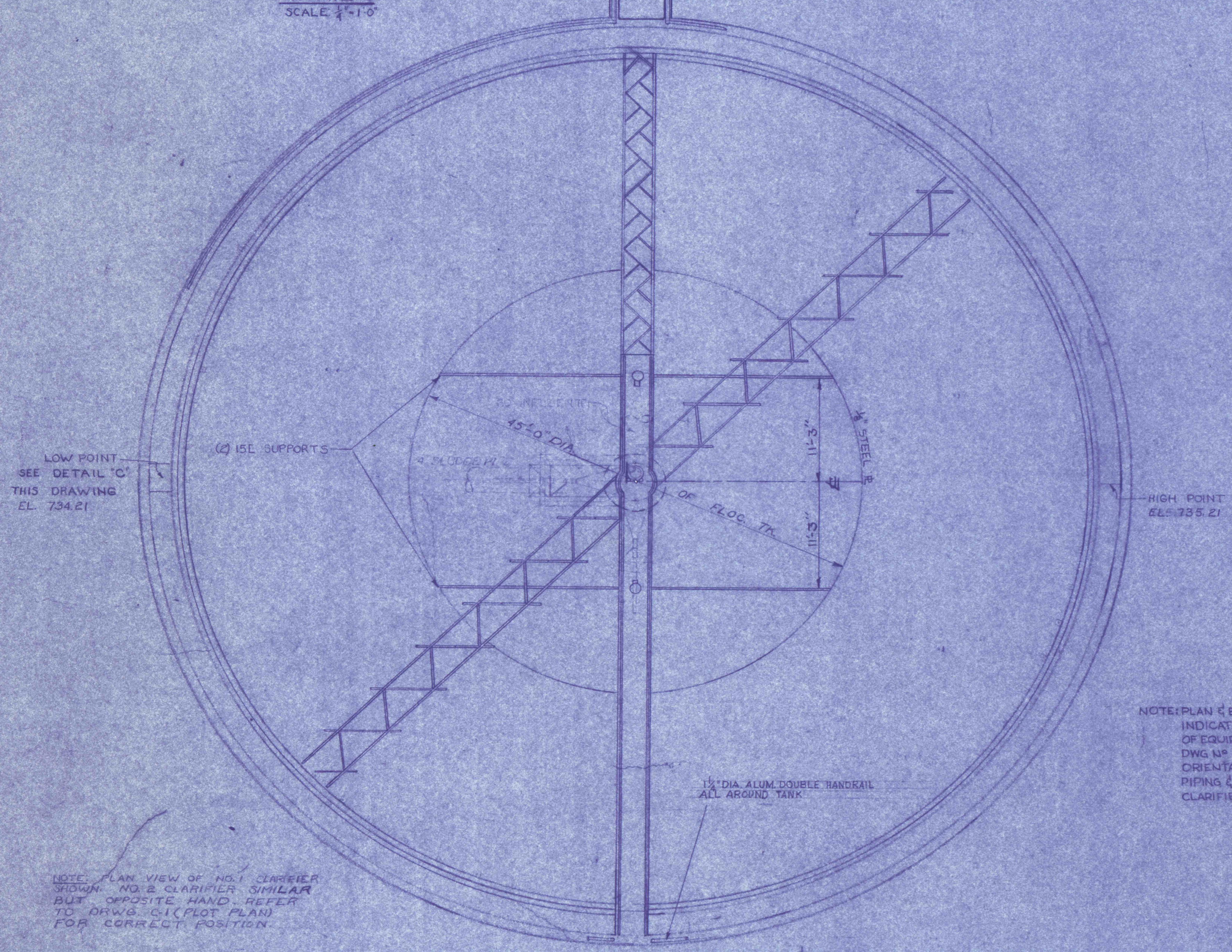
SECTION A-A  
DETAIL OF WALKWAY LANDING  
SCALE: 1/2"=1'-0"



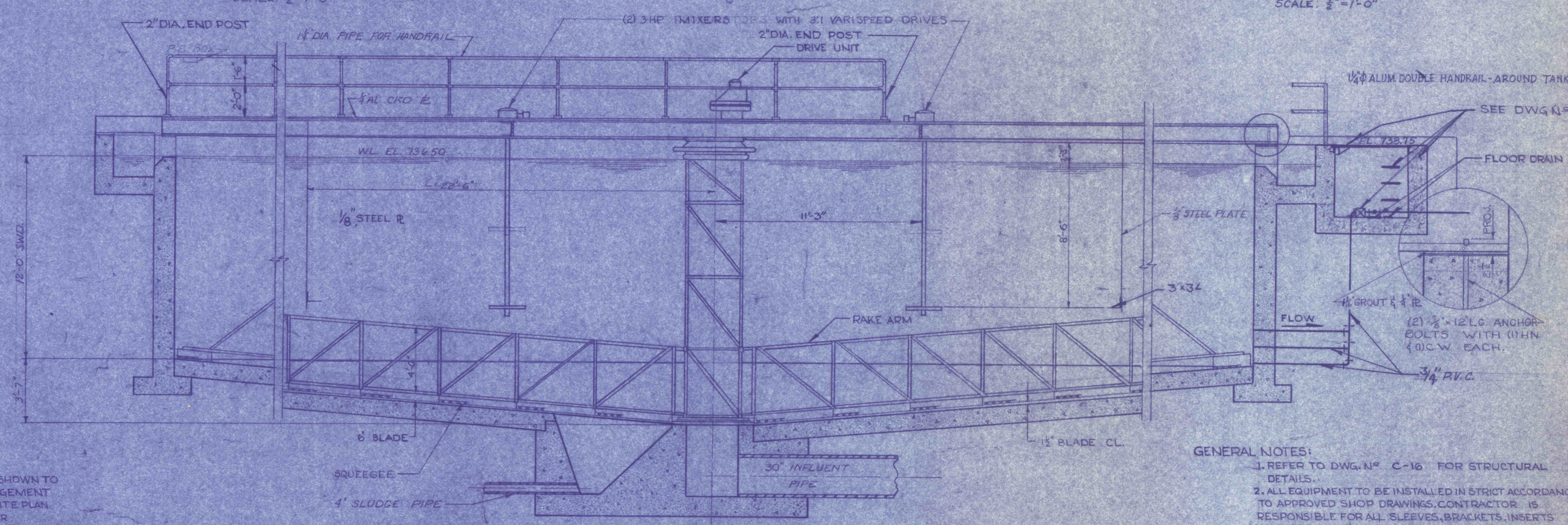
SECTION C-C  
DETAIL C  
SCALE: 1/2"=1'-0"



SECTION B-B  
DETAIL OF TANK CENTER  
SCALE: 1/2"=1'-0"



PLAN  
SCALE: 1/8"=1'-0"

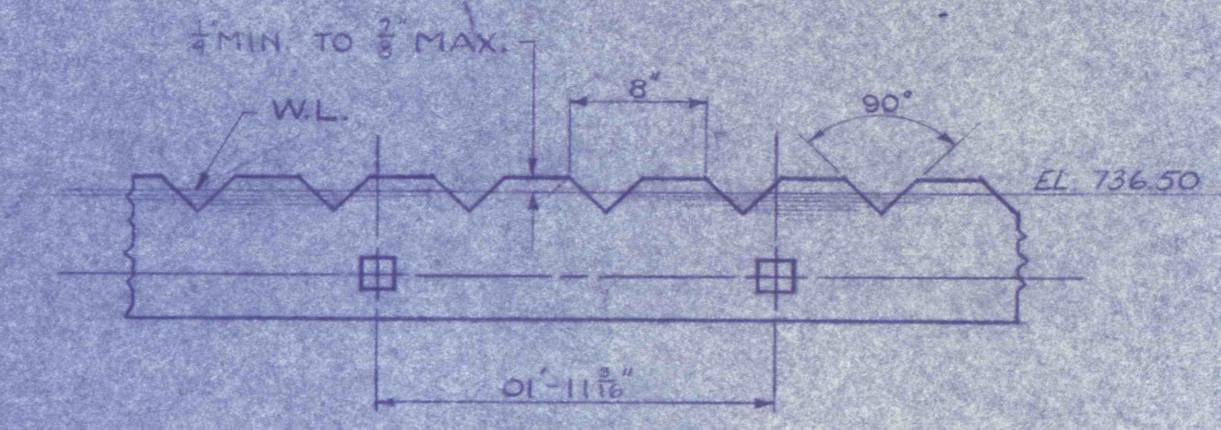
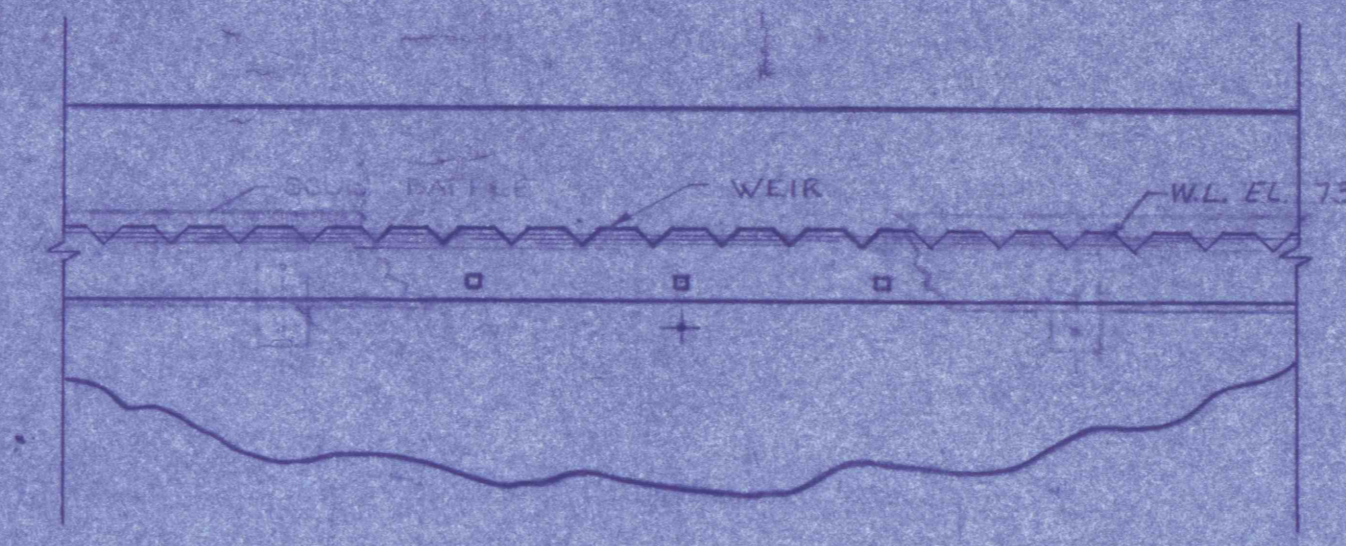


PSEUDO SECTION  
SCALE: 1/4"=1'-0"

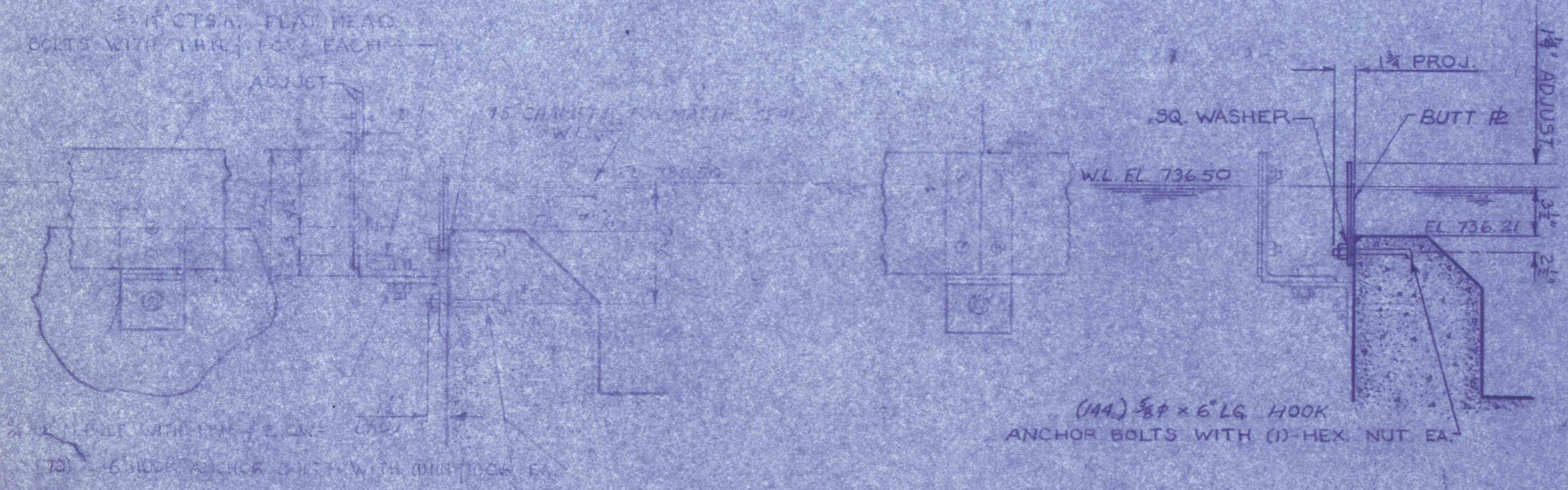
- GENERAL NOTES:
1. REFER TO DWG. NO. C-16 FOR STRUCTURAL DETAILS.
  2. ALL EQUIPMENT TO BE INSTALLED IN STRICT ACCORDANCE TO APPROVED SHOP DRAWINGS. CONTRACTOR IS RESPONSIBLE FOR ALL SLEEVES, BRACKETS, INSERTS, ANCHORS, ETC. CORRECT PLACEMENT OF SAME DURING CONCRETE CONSTRUCTION.
  3. WATER-TIGHT FLANGED SLEEVE FOR ALL PIPES THROUGH WALLS OR SLABS BELOW WATERLEVEL.

NOTE: PLAN & ELEVATION VIEWS SHOWN TO INDICATE GENERAL ARRANGEMENT OF EQUIPMENT. REFER TO SITE PLAN DWG. NO. C-1 FOR PROPER ORIENTATION OF WALKWAY-INFLUENT PIPING & DISCHARGE PIPING OF BOTH CLARIFIERS.

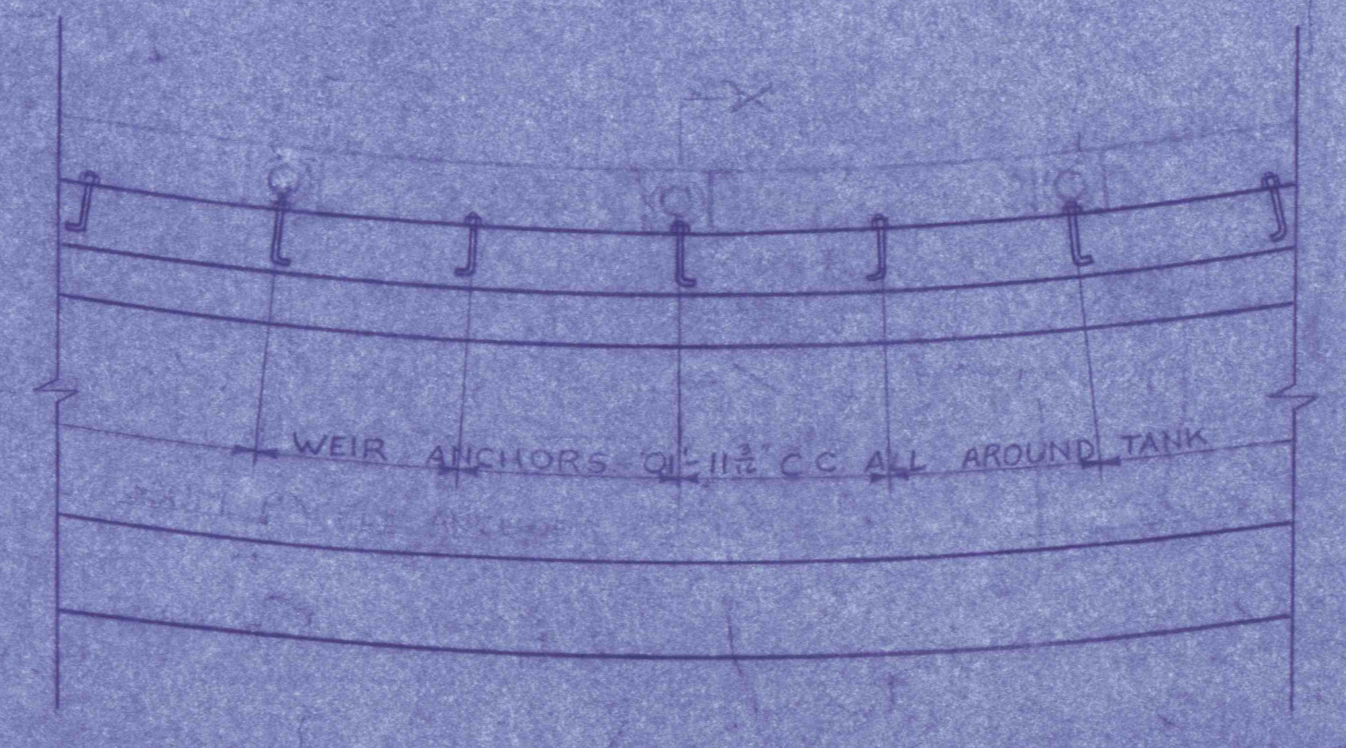
NOTE: PLAN VIEW OF HOIST CARRIER SHOWN. NO. 2 CLARIFIER SIMILAR BUT OPPOSITE HAND. REFER TO DWG. C-1 (PLOT PLAN) FOR CORRECT POSITION.



DETAIL OF WEIR  
SCALE: 1"=1'-0"



DETAIL OF WEIR & BUTT PLATE  
SCALE: 1"=1'-0"



TYPICAL DETAIL OF WEIR ANCHORS  
SCALE: 1/2"=1'-0"

PRE-FINAL



REVISIONS	

<b>TYPICAL CLARIFIER-MECHANICAL</b>	
CONSTRUCTION OF TREATMENT FACILITIES FOR ACID MINE DRAINAGE	
RAUSCH CREEK WATERSHED	
SCHUYLKILL COUNTY, PENNSYLVANIA	
ANTHRACITE RESEARCH & DEVELOPMENT CO. INC. consulting engineers POTTSVILLE PENNSYLVANIA	JANUARY 1969 DATE: NOV. 1969 SCALE: AS NOTED DRAWN: A. STICKLETON APPROVED: DRAWING NO: <b>C-17</b>