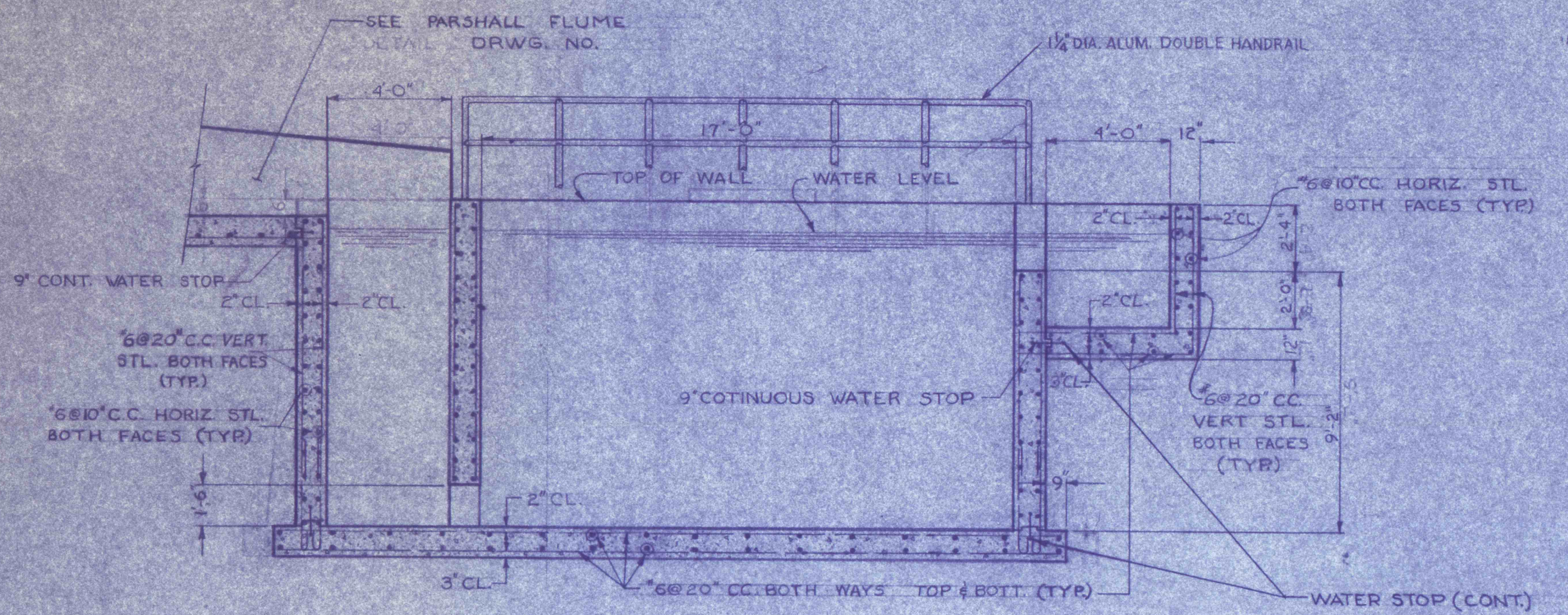


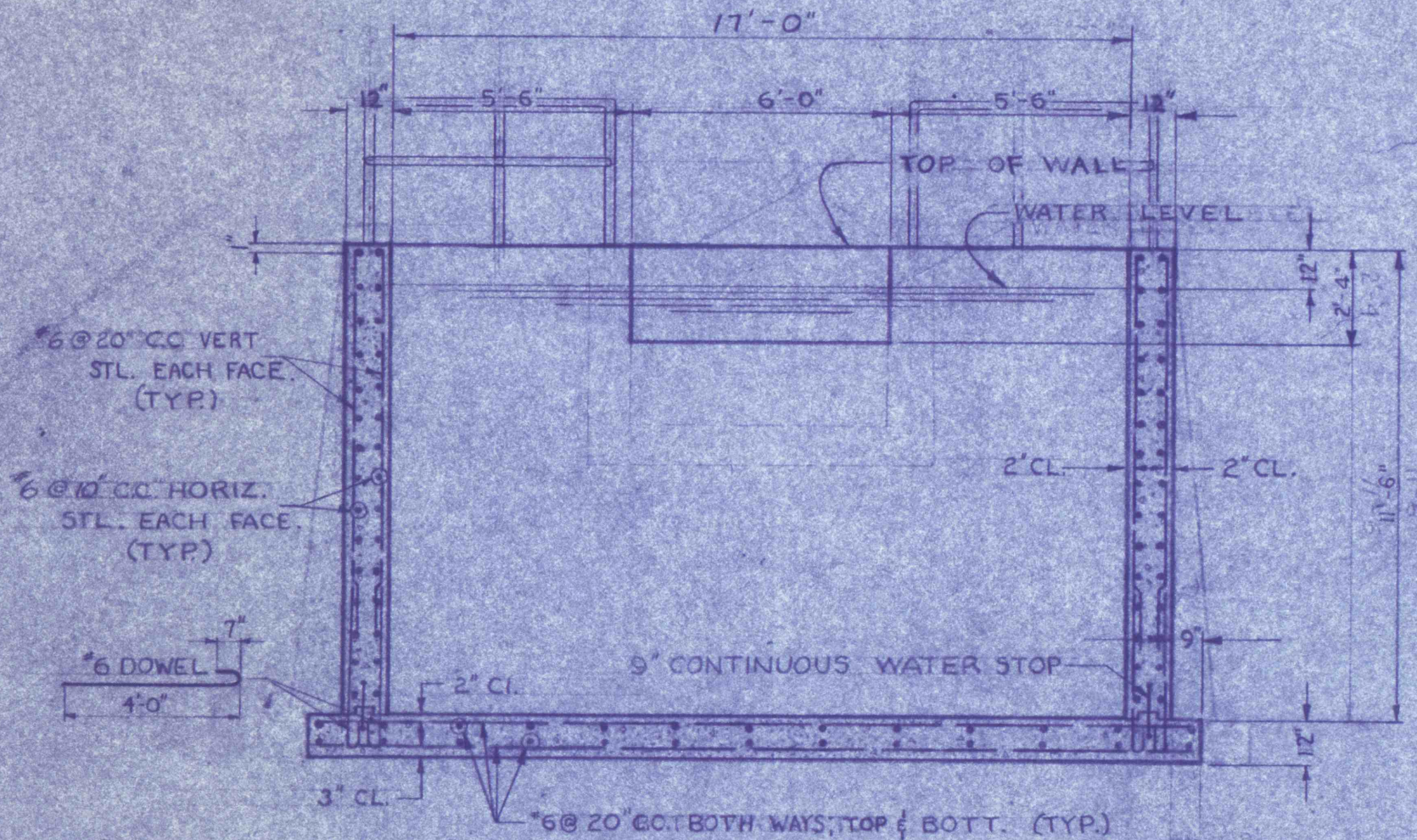
GENERAL NOTES

- ① ALL TANKS HOLDING LIQUID - ALL CONSTRUCTION JOINTS BELOW WATER LEVEL TO HAVE 9" CONTINUOUS WATERSTOPS.
- ② WATER TIGHT FLANGED SLEEVE FOR ALL PIPES THRU WALLS OR SLABS BELOW WATERLEVEL.



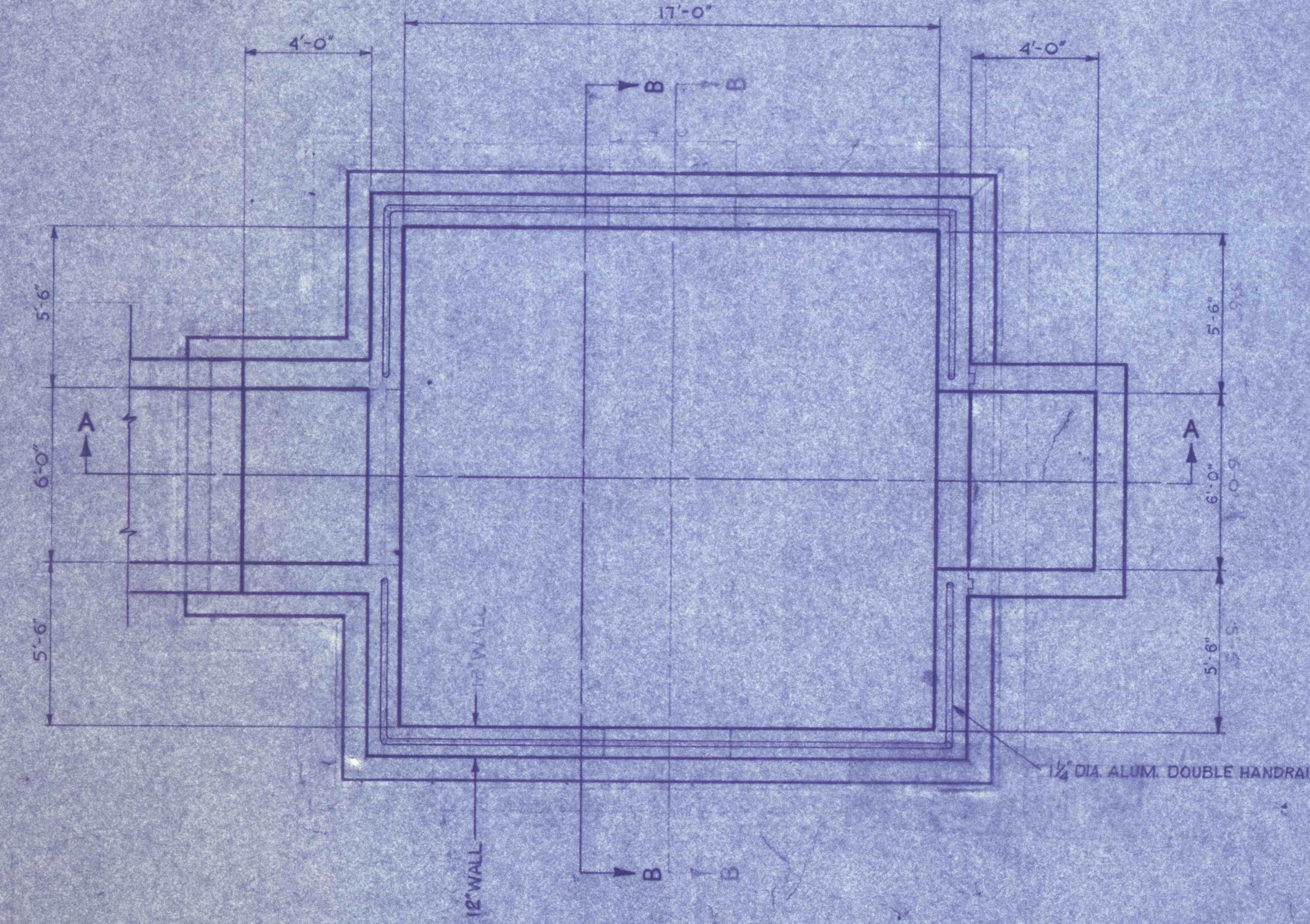
SECTION A-A

SCALE: 1/4" = 1'-0"



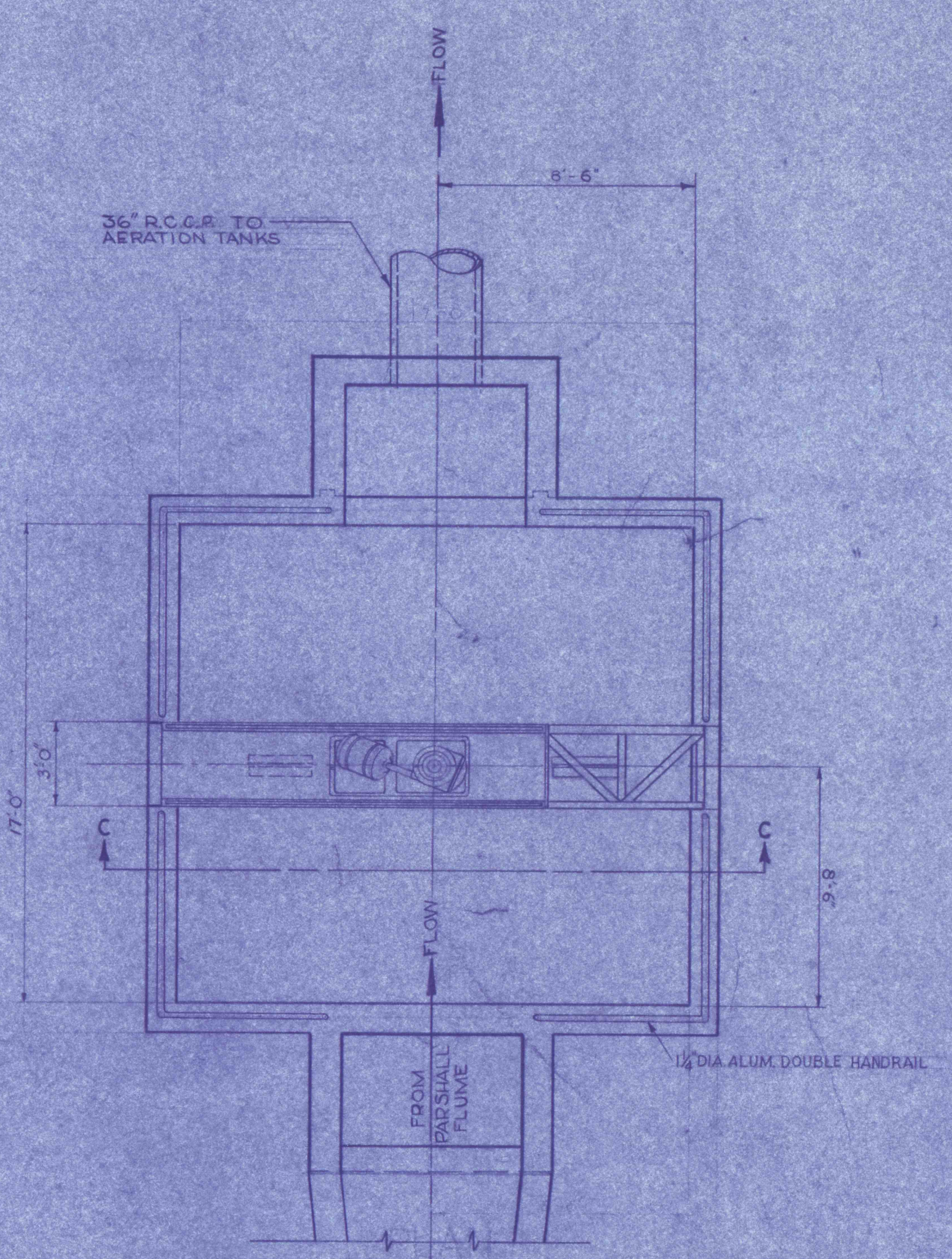
SECTION B-B

SCALE: 1/4" = 1'-0"



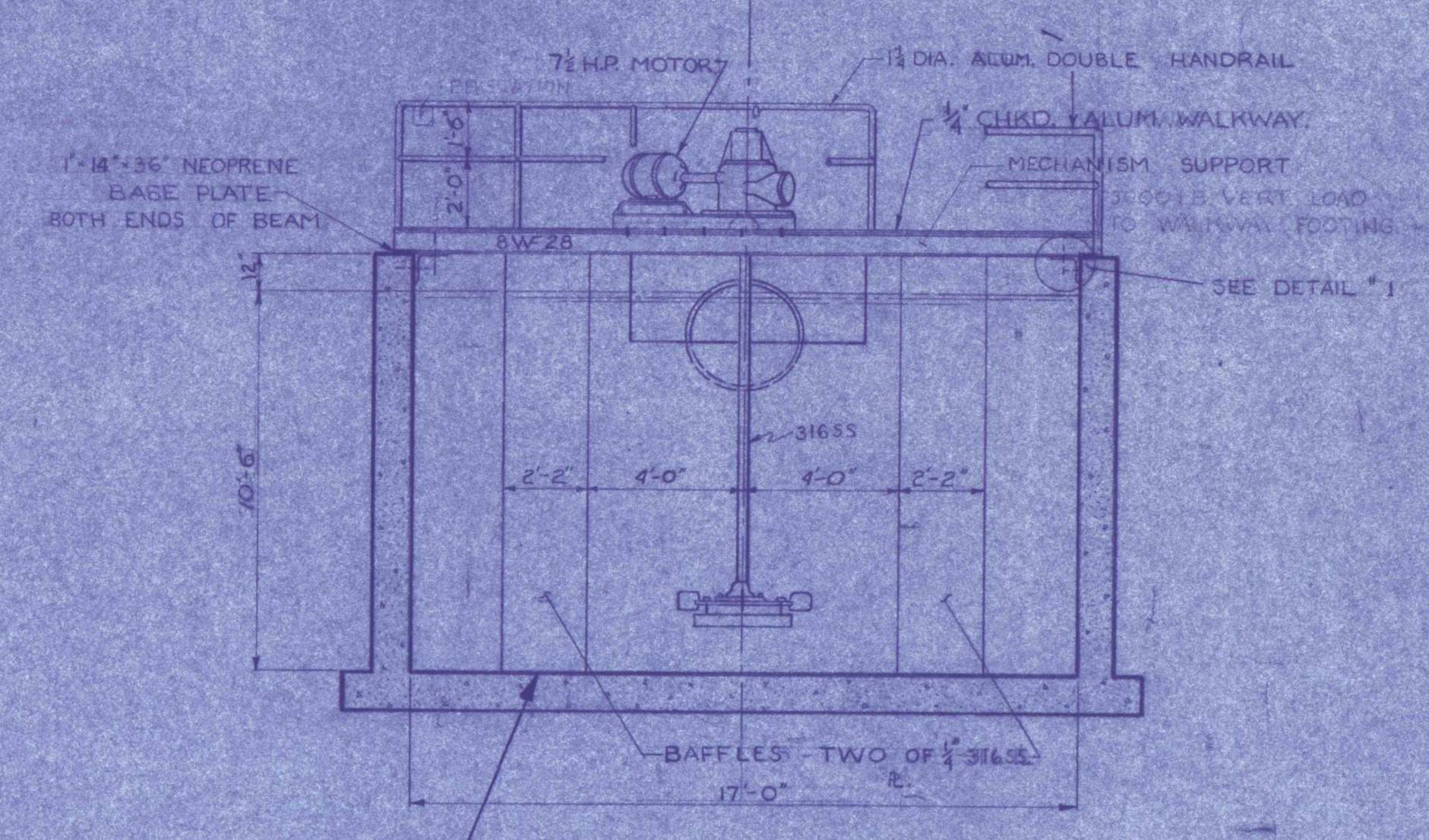
PLAN

SCALE: 1/4" = 1'-0"



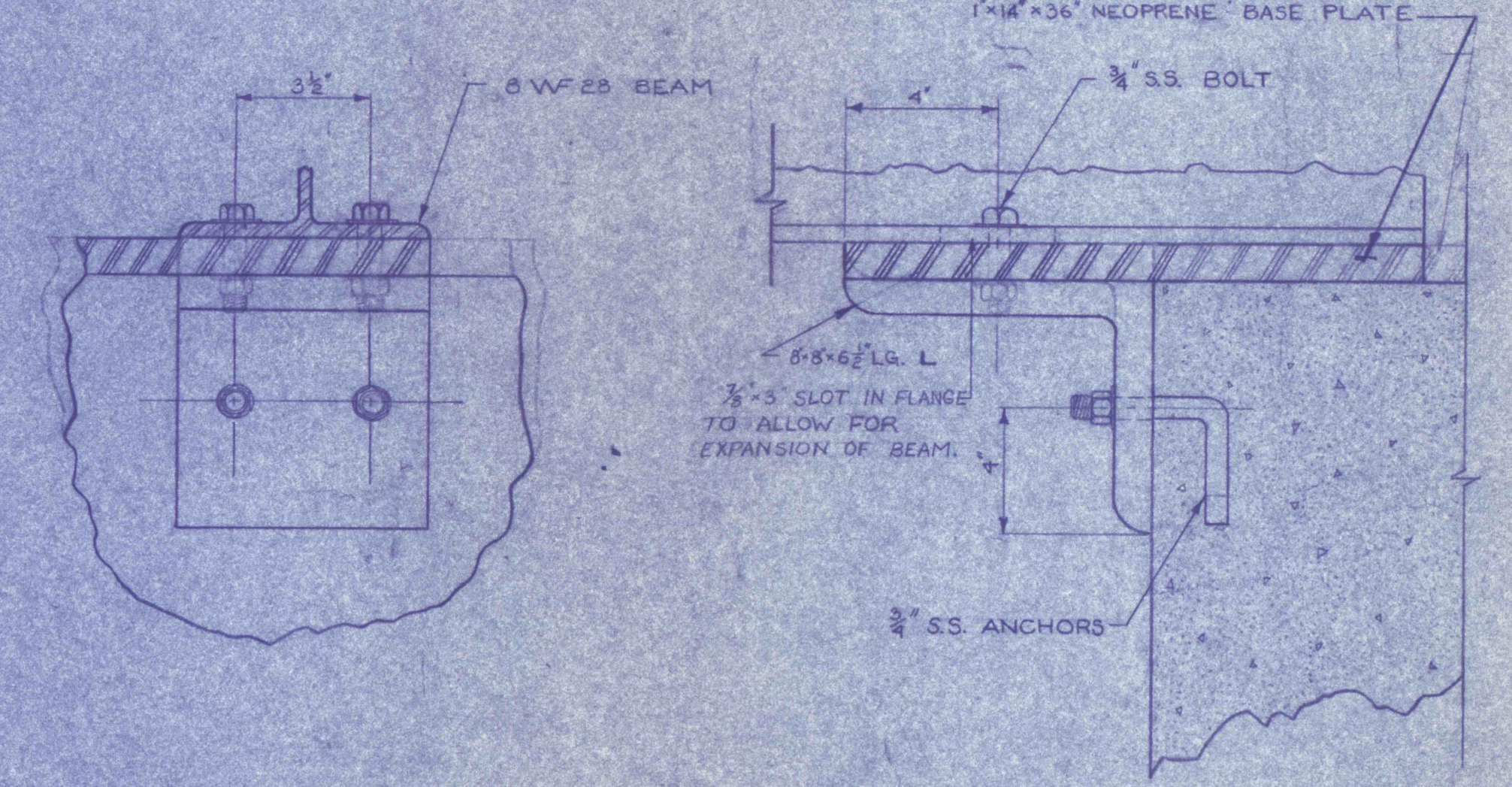
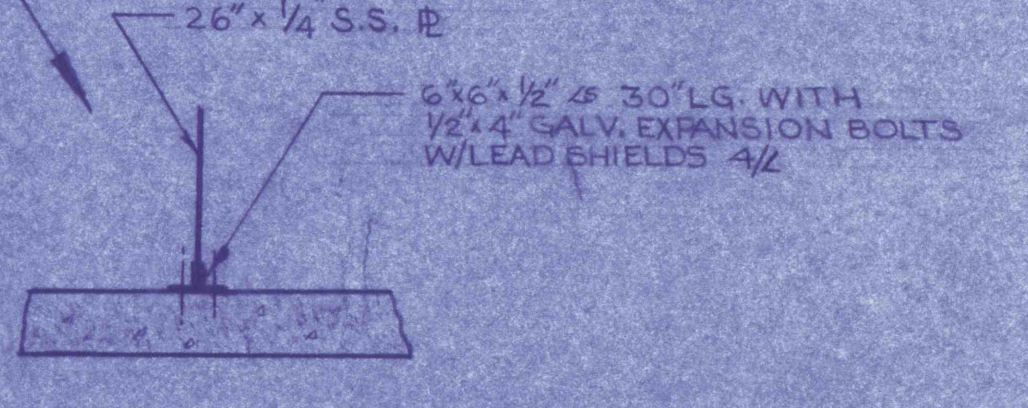
PLAN

SCALE: 1/4" = 1'-0"



SECTION C-C

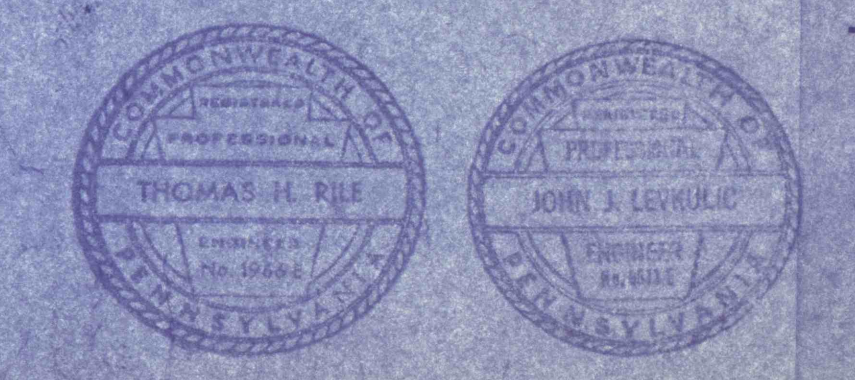
SCALE: 1/4" = 1'-0"



DETAIL NO. 1

SCALE: 1/4" = 1'-0"

PRE-FINAL



REVISIONS	

FLASH MIXER - MECH. STRUCTURAL

CONSTRUCTION OF TREATMENT FACILITIES
FOR ACID MINE DRAINAGE
RAUSH CREEK WATERSHED
SCHUYLKILL COUNTY, PENNSYLVANIA

ANTRACITE
RESEARCH & DEVELOPMENT CO. INC.
consulting engineers

POTTSVILLE PENNSYLVANIA TAMAQUA

JOB NO. 6605
DATE: NOV. 17, 67
SCALE: AS NOTED
DRAWN: J.S.S.
APPROVED: T.H.F. J.M.L.

DRAWING NO.
C-13