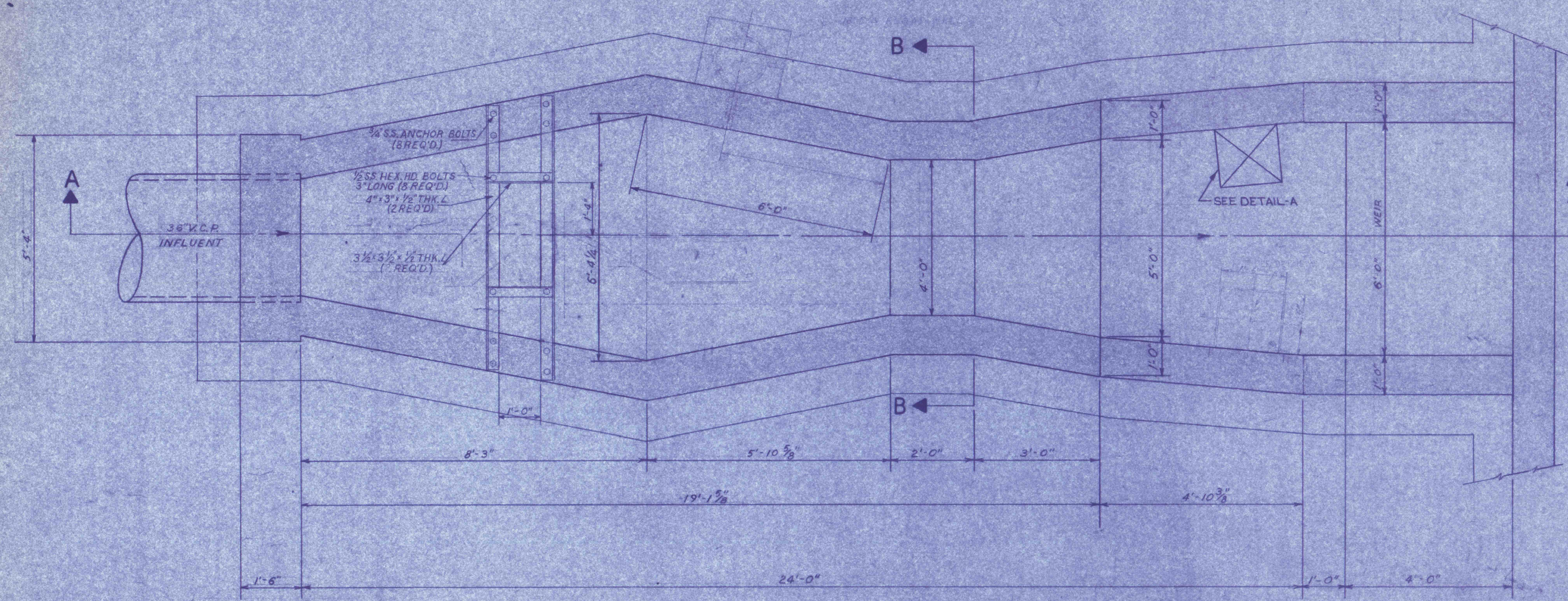
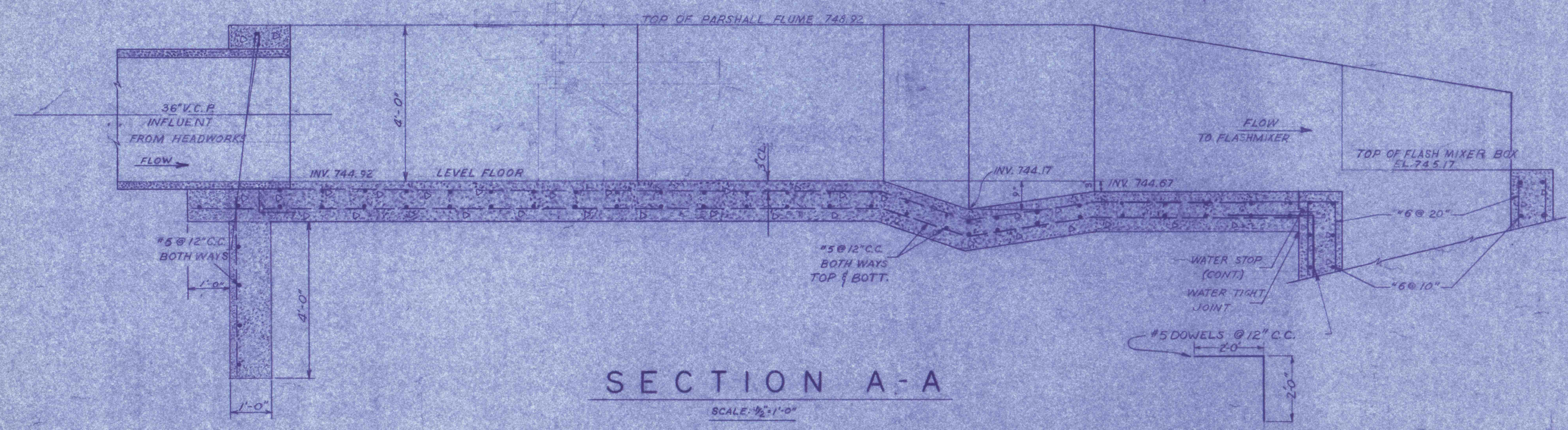


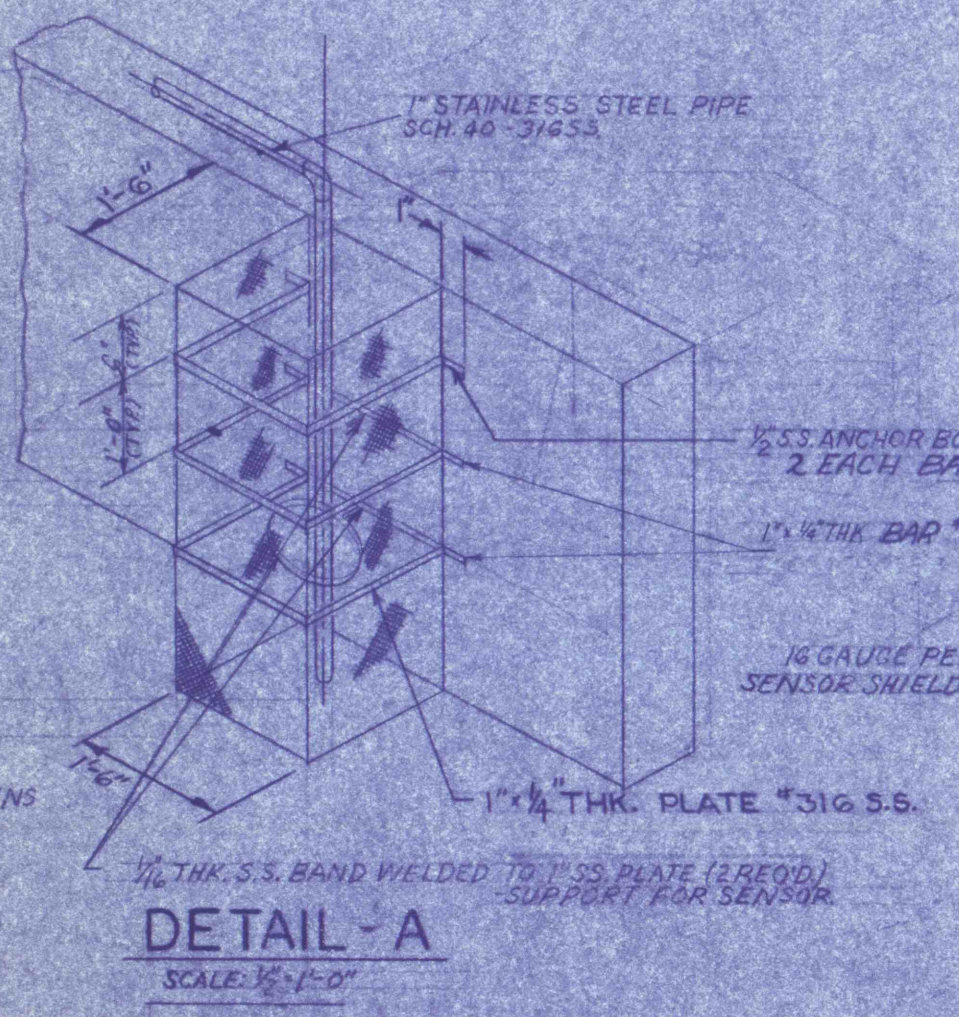
GENERAL NOTES:  
 1. ALL CONSTRUCTION JOINTS BELOW WATER LEVEL TO HAVE 1" WATER STOP CONTINUOUS.  
 2. REFER TO DWG. NO. 1 FOR LOCATION OF PARSHALL FLUME.  
 3. REFER TO DWG. NO. 1 FOR ELECTRICAL DETAILS.  
 4. SEE FLOWMETER DRAWING.  
 5. SENSOR BASE IS VARIABLE IN HEIGHT ACCORDING TO VARIOUS DEPTHS OF TANKS.



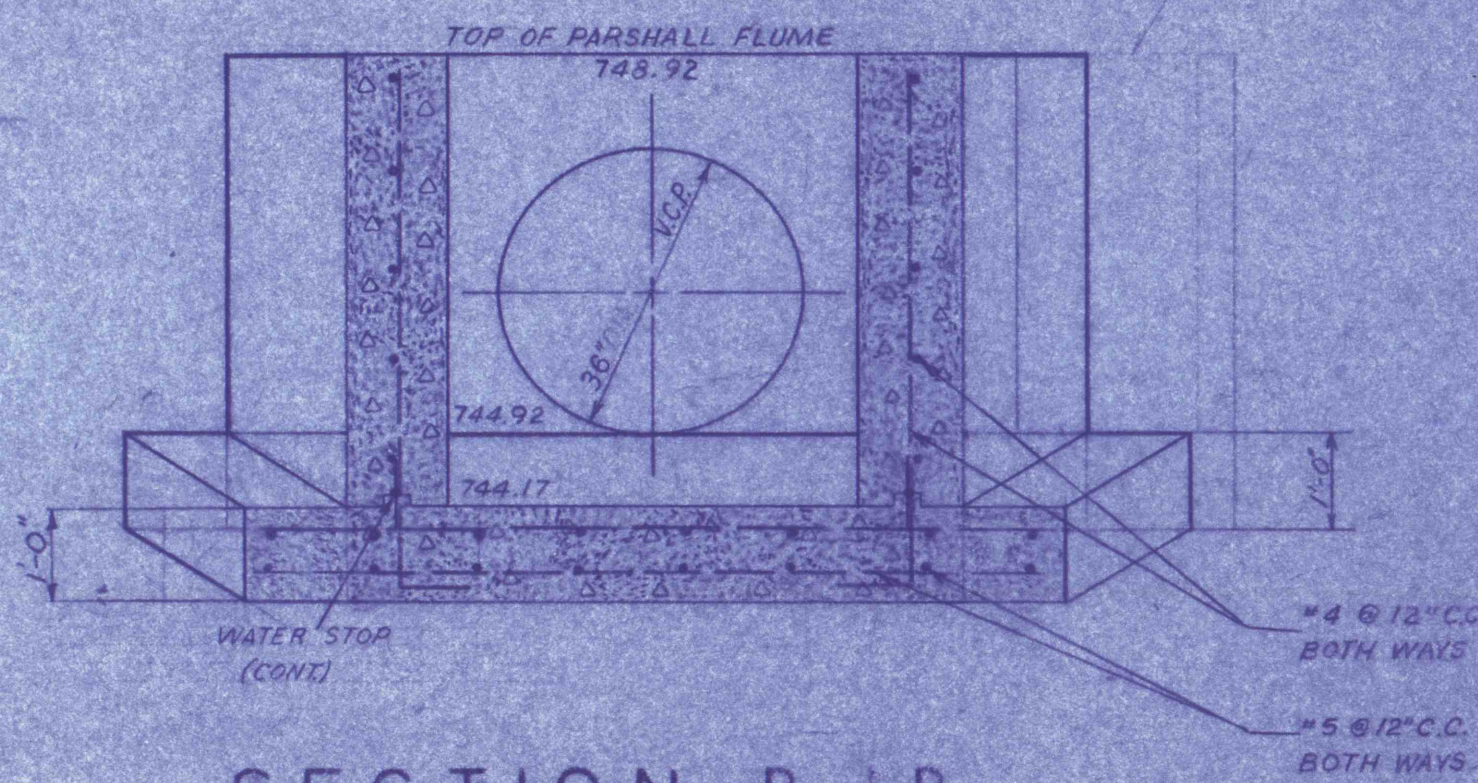
PLAN  
 SCALE: 1/2"=1'-0"



SECTION A-A  
 SCALE: 3/4"=1'-0"



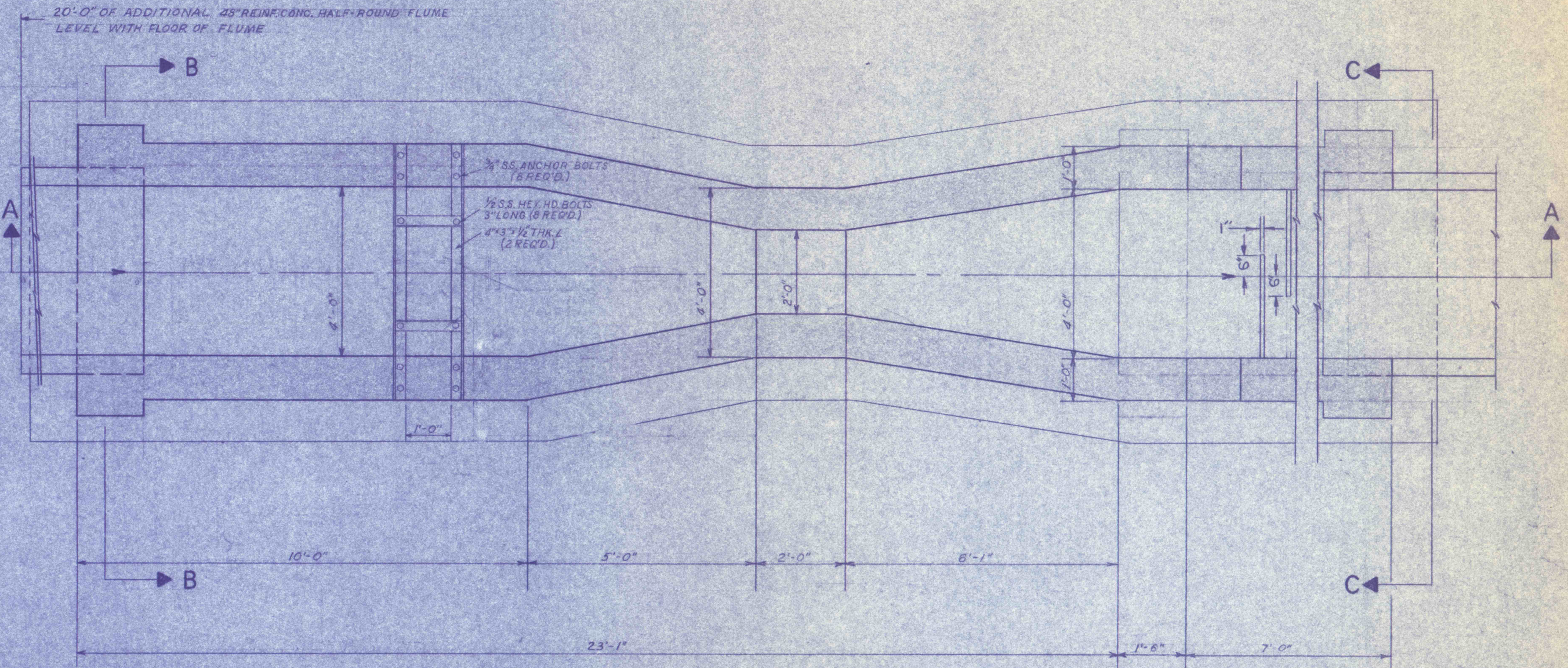
DETAIL - A  
 SCALE: 3/4"=1'-0"



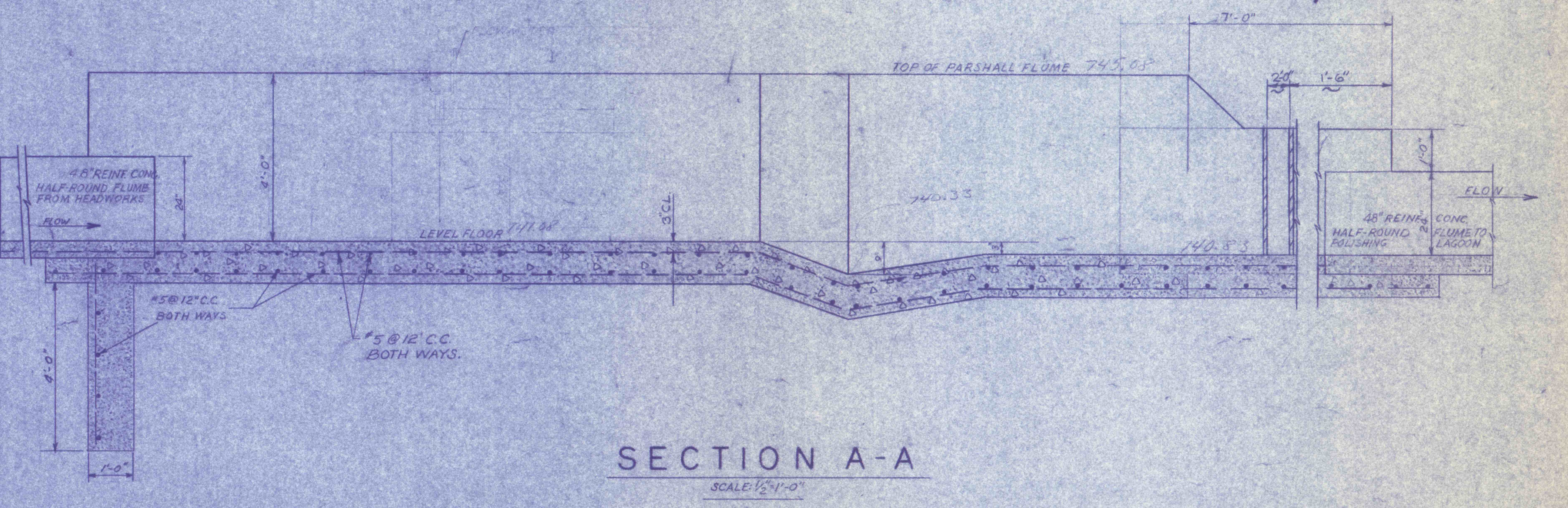
SECTION B-B  
 SCALE: 1/2"=1'-0"

PARSHALL FLUME NO. 1

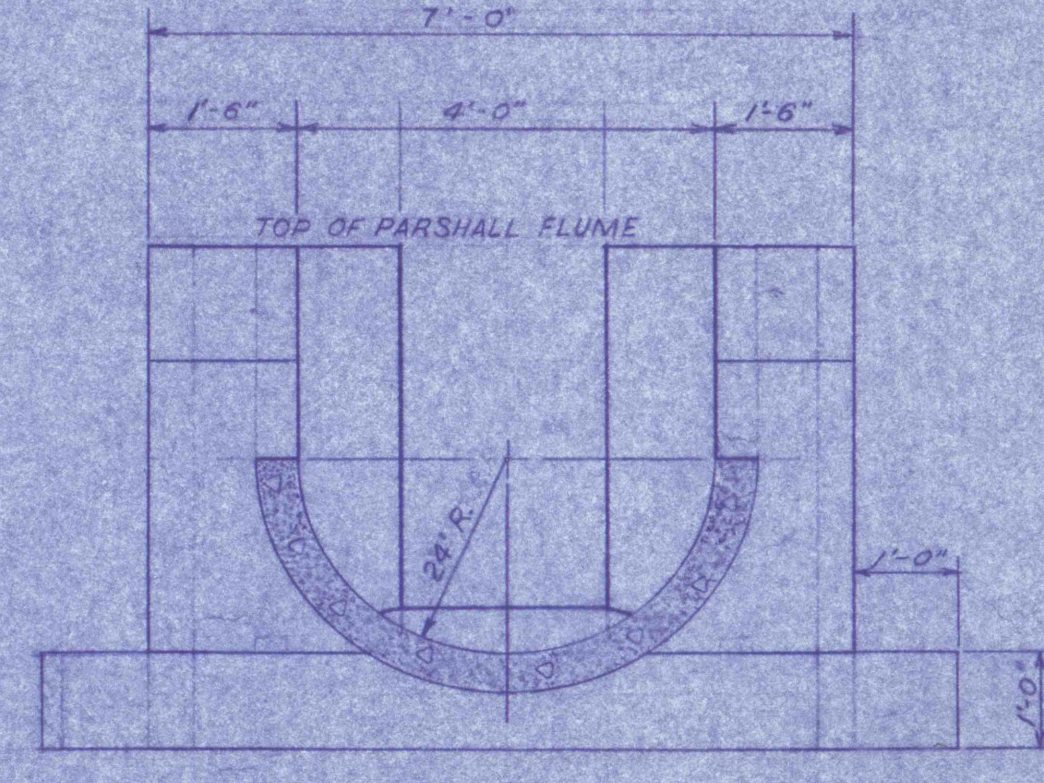
GENERAL NOTES:  
 1. ALL CONSTRUCTION JOINTS BELOW WATER LEVEL TO HAVE 1" WATER STOP CONTINUOUS.



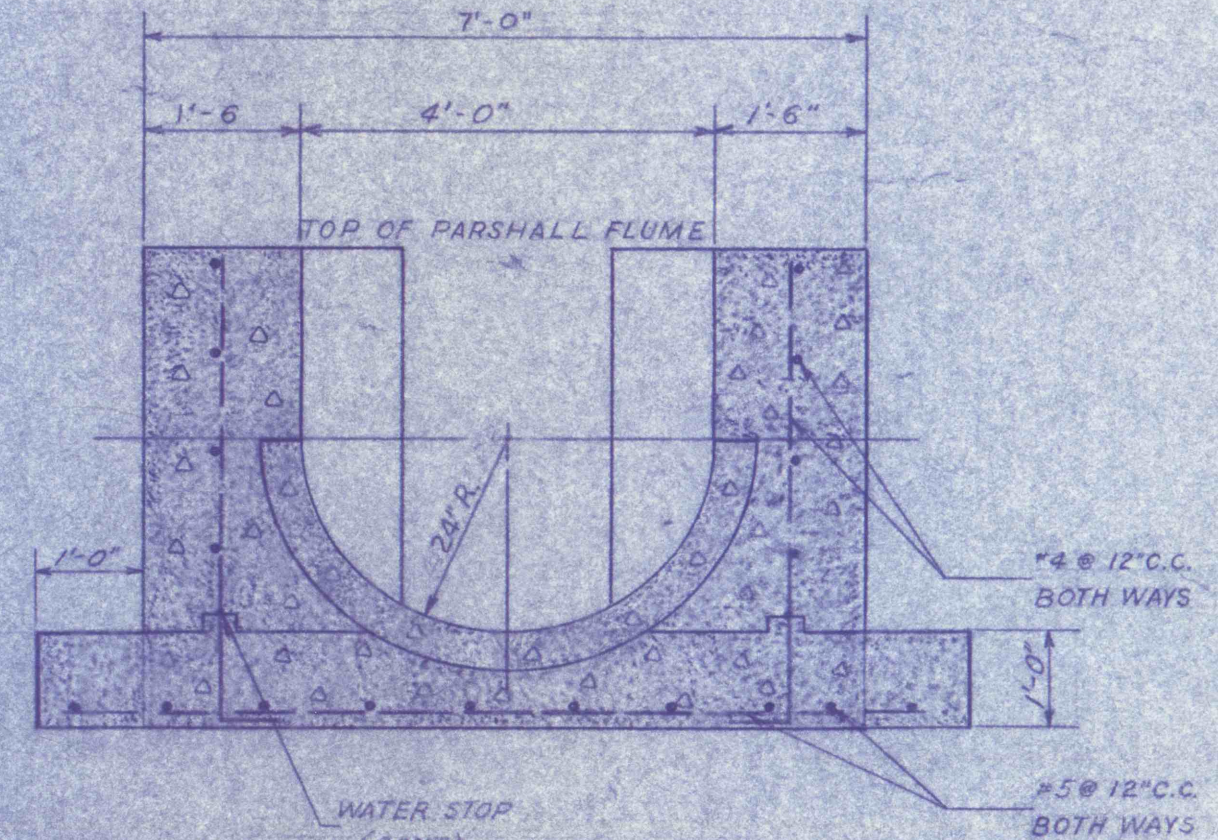
PLAN  
 SCALE: 1/2"=1'-0"



SECTION A-A  
 SCALE: 3/4"=1'-0"



SECTION C-C  
 SCALE: 1/2"=1'-0"



SECTION B-B  
 SCALE: 1/2"=1'-0"

PARSHALL FLUME NO. 2

PRE-FINAL



REVISIONS	
PARSHALL FLUMES NO. 1 & 2 STRUCTURAL AND MECHANICAL	
CONSTRUCTION OF TREATMENT FACILITIES FOR ACID MINE DRAINAGE RAUSCH CREEK WATERSHED SCHUYLKILL COUNTY PENNSYLVANIA	
JOB NO: 6805 DATE: NOV 1969 SCALE: AS NOTED DRAWN: J.S.N. APPROVED: T.H.R./J.L.L.	DRAWING NO: <b>C-12</b>
ANTHRACITE RESEARCH & DEVELOPMENT CO. INC. CONSULTING ENGINEERS POTTSVILLE PENNSYLVANIA TAMAUQA	