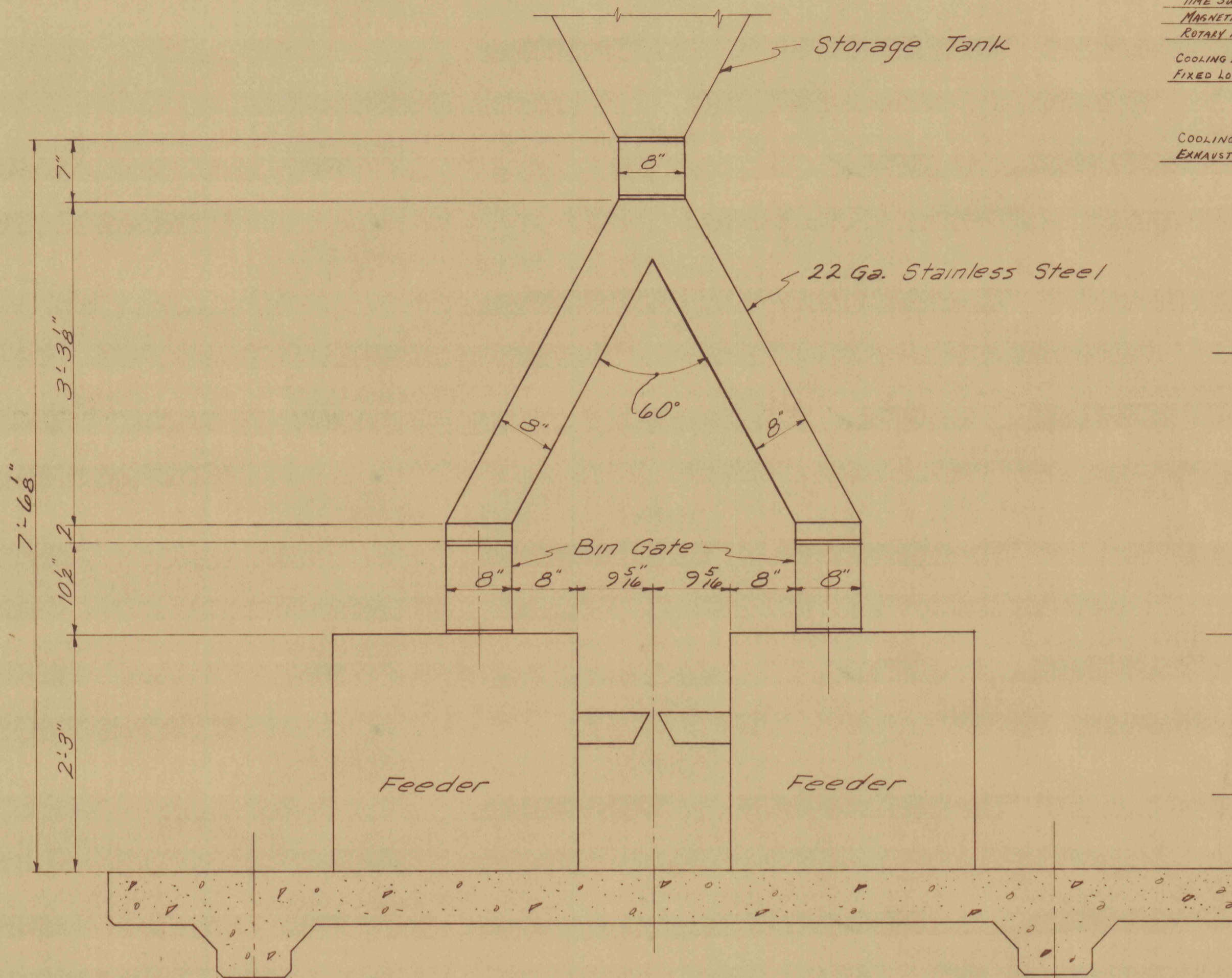


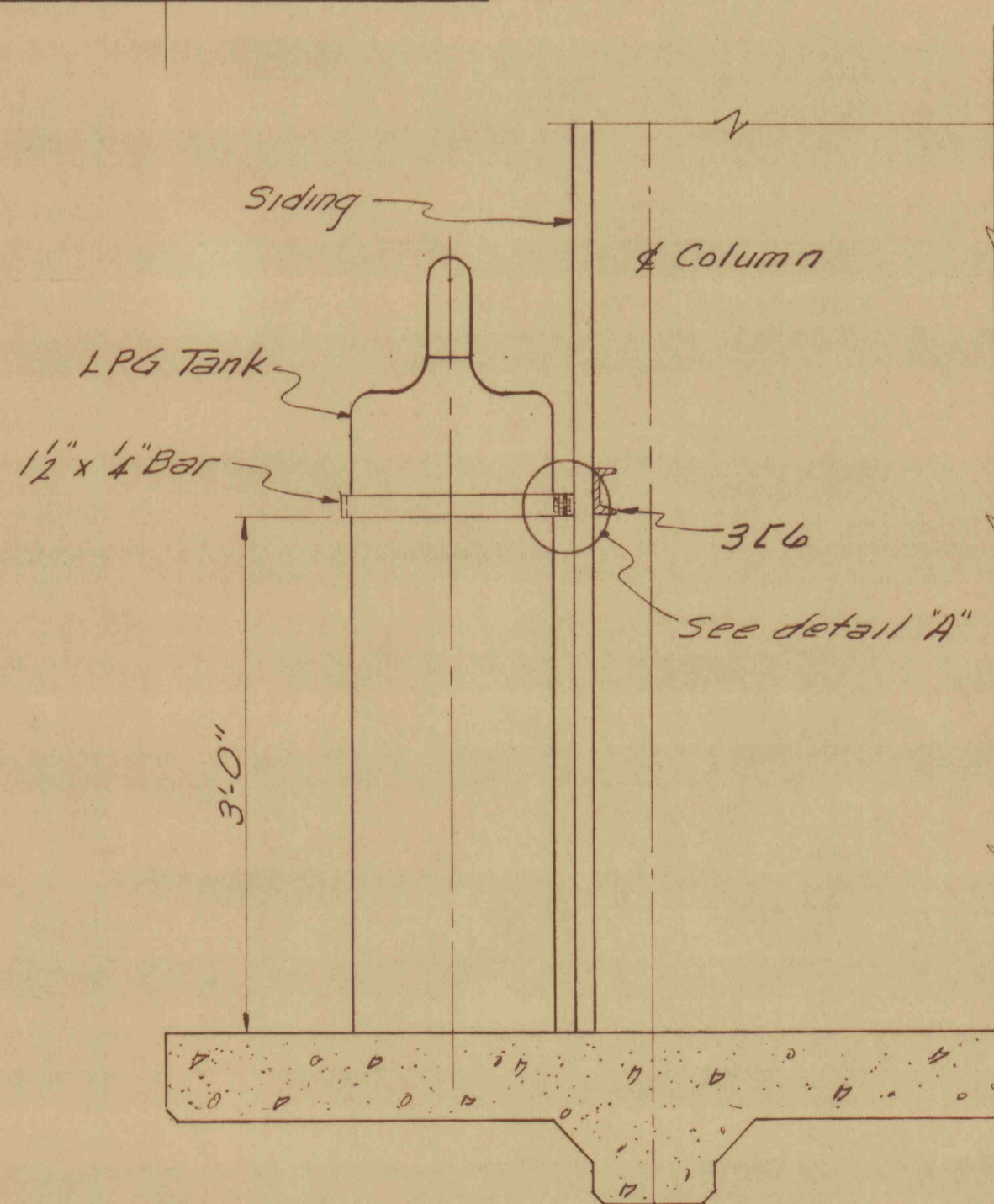
EQUIPMENT LAYOUT
Scale 1"=1'0"

NOTES:
For details of door buck see sheet # 7
For detail of siding attachment to column see sheet # 4

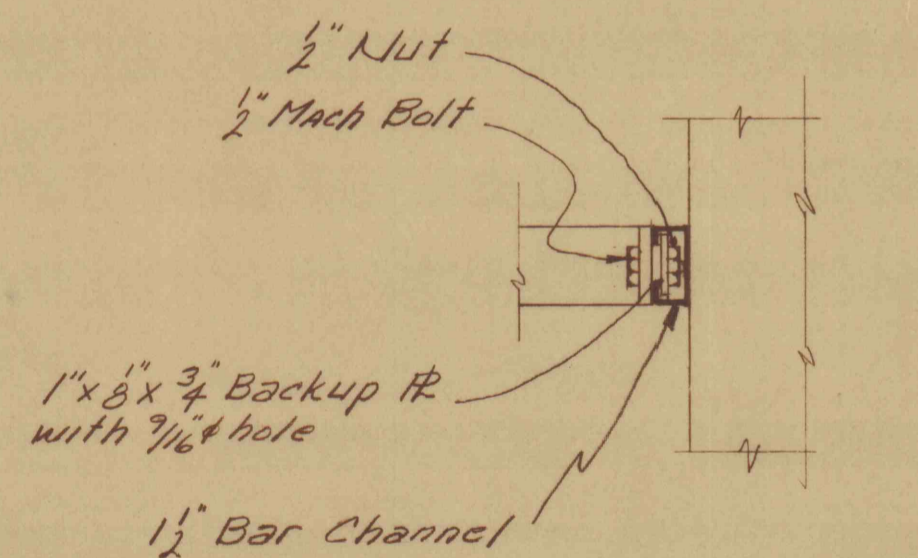
Install L.P.G. tanks to clear exhaust from emerg. gen.



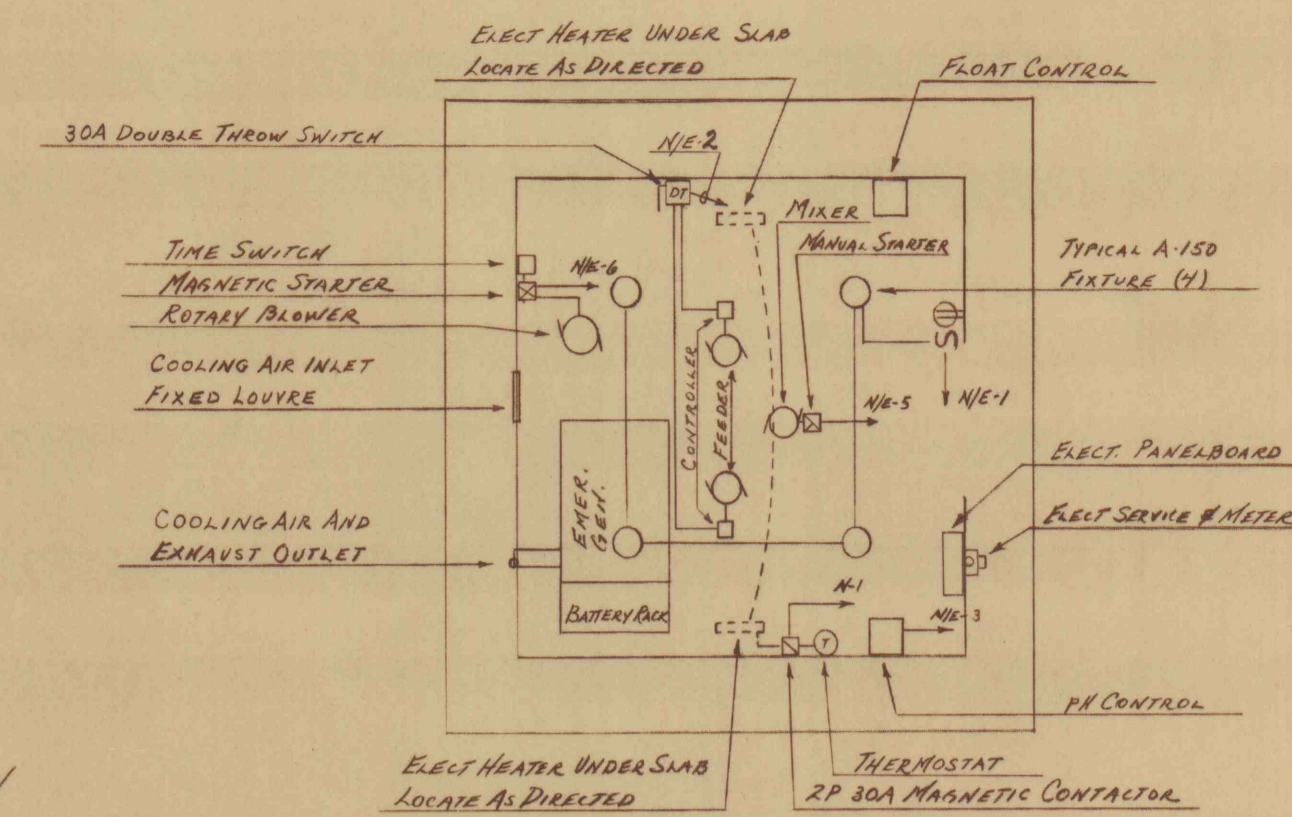
DETAIL OF LIME FEED
Scale: 1"=1'0"



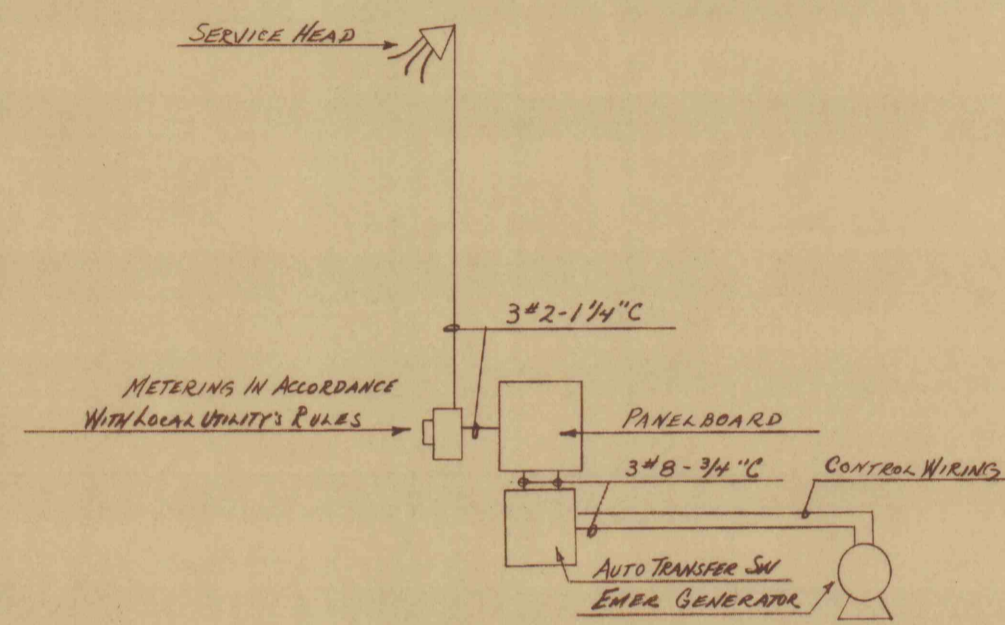
SECTION "A-A"
Scale 1"=1'0"



DETAIL "A"
Scale 3"=1'0"



ELECTRICAL FLOOR PLAN
Scale 1/4"=1'0"



ELECTRICAL RISER DIAGRAM
NOT TO SCALE

ELECTRICAL PANELBOARD SCHEDULE

| SECTION | CIR. NO. | RATINGS | POLES | FEEDINGS | WIRING |
|--|----------|---------|-------|----------------------|------------|
| SECTION 18 SW 120/240V 50A MAIN BUS | 1 | 20 | 1 | LIGHTS & RECEPTACLE | 2#12-34" C |
| | 2 | 20 | 1 | FEEDER | 2#12-34" C |
| | 3 | 20 | 1 | pH CONTROL | 2#12-34" C |
| | 4 | 20 | 1 | SPARE | |
| | 5 | 20 | 2 | MIXER | 2#12-34" C |
| | 6 | 30 | 2 | ROTARY BLOWER | 2#12-34" C |
| SECTION 18 SW 120/240V 100A MAIN BREAKER | 1 | 40 | 2 | ELECTRIC HEATERS | 2#8-34" C |
| | 2 | 50 | 2 | AUTO TRANSFER SWITCH | 3#8-34" C |
| | 3-4 | 50 | 2 | SPACES | |
| | | | | | |

NOTE: SECTION 18 FEED FROM AUTOMATIC TRANSFER SWITCH.

REVISIONS

| SYMBOL | CORRECTIONS |
|--------|-------------|
| | |

APPROVALS

APPROVED: *[Signature]*
DIRECTOR—BUREAU OF ENGINEERING & CONSTRUCTION
APPROVED: *[Signature]*
SUPERVISING ENGINEER—BUREAU OF ENGINEERING & CONSTRUCTION
APPROVED: *[Signature]*
FOR DEPT. OF MINES & MINERALS SECY.
SUBMITTED BY: *[Signature]* ELECTRICAL ENGINEER

CHECKED BY

| ARCH. | CIVIL & STRUCT. | MECH. | ELECT. |
|-------|-----------------|-------|--------|
| | | | |

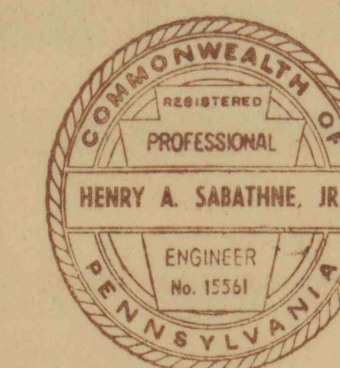
PROJECT NO. S.L. 106-2

EQUIPMENT LAYOUT
MINE DRAINAGE TREATMENT

BUCK MT. CARBON CO., PENNSYLVANIA

BUREAU OF ENGINEERING & CONSTRUCTION
DEPARTMENT OF PROPERTY & SUPPLIES

| DATE | COMMONWEALTH OF PENNSYLVANIA | GOVERNOR | SHEET NO. |
|----------------|------------------------------|-----------|-----------|
| SEPT. 1967 | RAYMOND P. SHAFER | | 4 |
| SCALE AS NOTED | DEPT. OF PROPERTY & SUPPLIES | | OF 7 |
| | PERRIN C. HAMILTON | SECRETARY | 7 |
| | HARRISBURG, PENNSYLVANIA | | |



ALL DIMENSIONS AND MEASUREMENTS SHALL BE CHECKED AND VERIFIED BY THE CONTRACTOR AT THE SITE