

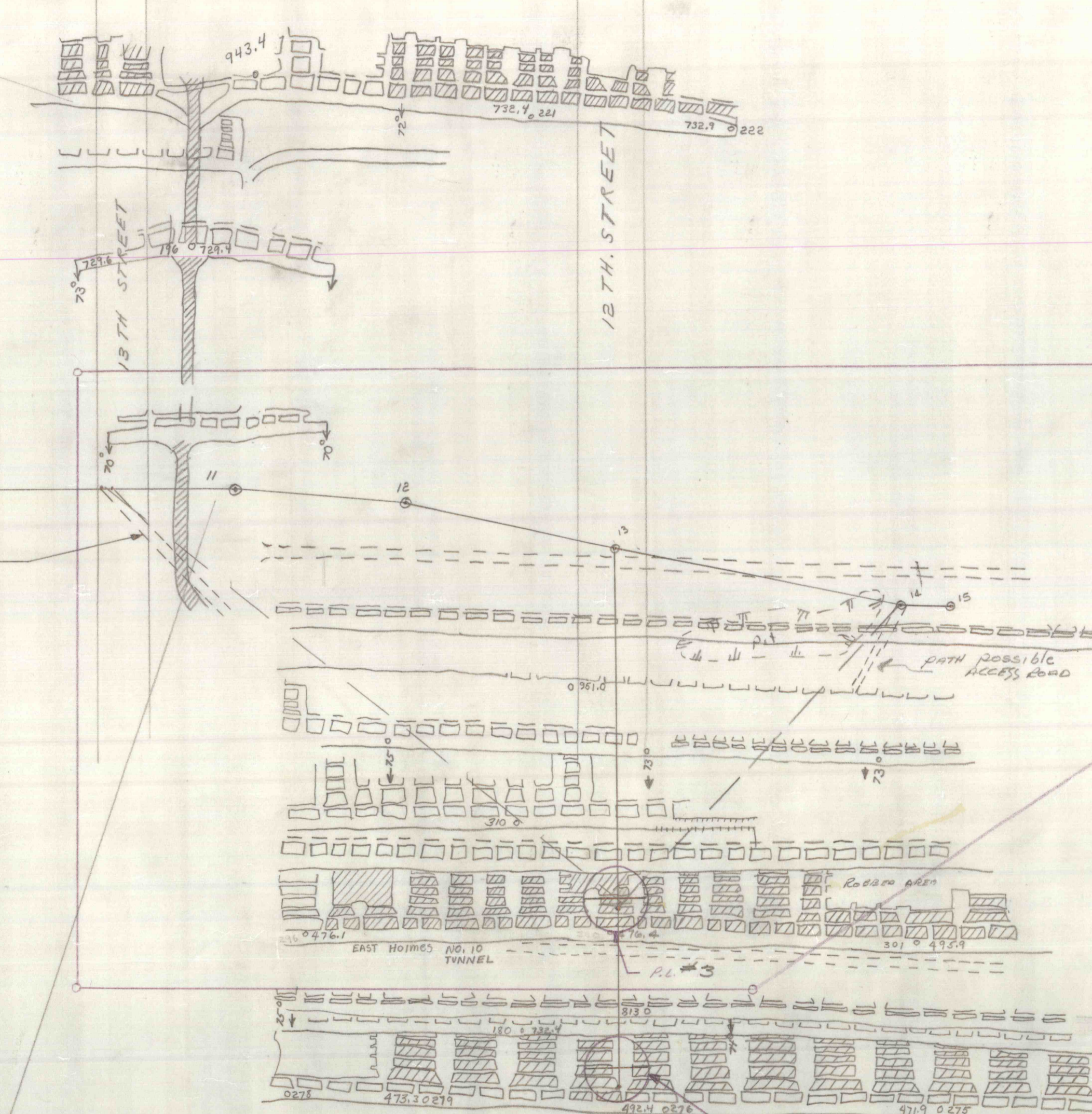
15TH STREET

14TH STREET

13TH STREET

12TH STREET

11TH STREET



SHERMAN COLLIERY  
 Project No. FE:54:2-0

HOLMES VEIN  
 1" = 100'

CITY OF NORWEGIAN PATSVILLE TOWNSHIP

PL. 3. Approx. 750' ACCESS ROAD NEEDED BORE-HOLE DATA  
 PL. 4. Approx. 900' ACCESS ROAD NEEDED

Surface #1 - 1220'      Surface #2 - 1289'  
 Holmes vein E - 601.9-476.4      Skidmore vein E - 602-473'  
 depth of hole - 518'-743'      depth of hole - 683'-812'

From #13 350' on az. 130° #1  
 From #13 525' on az. 130° #2

S. Boyer 6/16/76