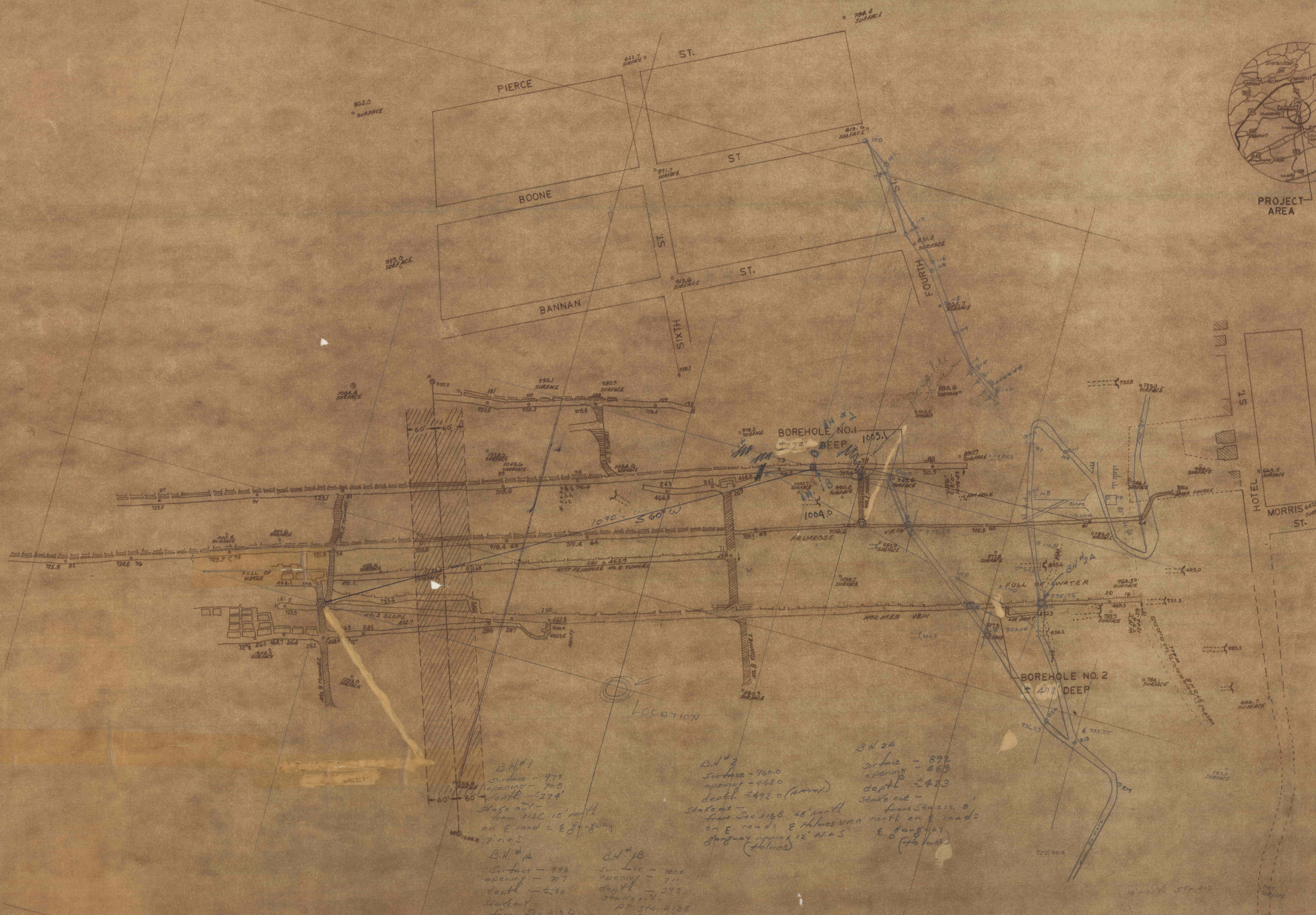


PROJECT AREA



NO.	DATE	REVISION	APPR.
SUBMITTED			
DESIGN ENGINEER	<i>M. Karmozyn</i>		
APPROVED	<i>M. Wallace</i>		
DISTRICT ENG. ANTHRACITE REGION			
APPROVED			
DIRECTOR BUREAU OF RES. PROGRAM'S			

(PROFESSIONAL SEALS W/SIGNATURES)
 COMMONWEALTH OF PENNSYLVANIA
 DEPT. OF ENVIRONMENTAL RESOURCES
 OFFICE OF RESOURCES MANAGEMENT
 PROJECT NO. FE 54:2-0
SHERMAN MINE EXPLORATORY BOREHOLE PROJECT
 CITY OF POTTSVILLE
 SCHUYLKILL COUNTY PENNSYLVANIA

LOCATION MAP

DRAWN BY <i>M.K.</i>	DATE 4-17-74	DRAWING NO. 1 OF 1
CHECKED BY <i>M.K.</i>	SCALE 1" = 100 FT.	

B.N. #1
 surface - 979
 opening - 765
 depth - 274
 Stake out -
 from Sta. 213C 15' north
 on E road = 88' 8" N.W.S.
 7' N.W.S.

B.N. #2
 surface - 760.0
 opening - 468.0
 depth - 492.0 (approx)
 Stake out -
 from Sta. 213B 42' north
 on E road = E Holmes vein north on E road =
 gangway approx 12' N.W.S
 E Holmes
 (Holmes)

B.N. #1a
 surface - 992
 opening - 707
 depth - 286
 Stake out -
 from Sta. 213D
 65' west toward
 Sta. 213E E road
 4' N.W.S.

B.N. #1b
 surface - 1004
 opening - 711
 depth - 293
 Stake out -
 at Sta. 213E
 on E road