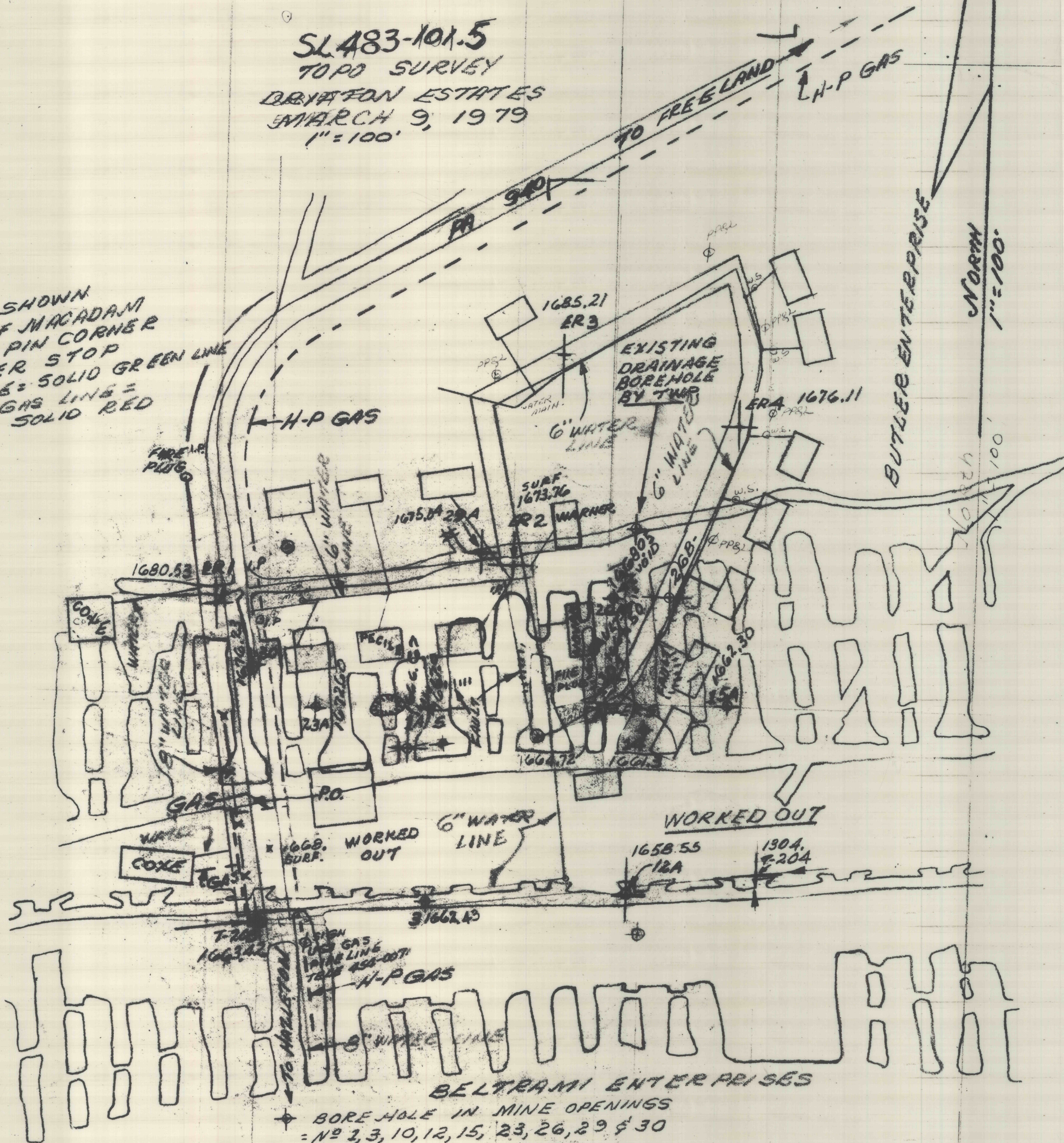


SL 483-101.5
 TOPO SURVEY
 DRIFTON ESTATES
 MARCH 9, 1979
 1" = 100'

NOTE: ALL ROADS SHOWN
 ARE EDGE OF MACADAM
 I.P. = IRON PIN CORNER
 W.S. = WATER STOP
 WATER LINE = SOLID GREEN LINE
 HIGH PRESS. GAS LINE = SOLID RED



BELTRAMI ENTERPRISES
 BOREHOLE IN MINE OPENINGS
 = NO 2, 3, 10, 12, 15, 23, 26, 29 & 30
 BOREHOLE IN PILLARS
 = NO 5 & 14
 FINAL BOREHOLE LAYOUT

WED. MARCH 28, 1979 KAL/MAZ
 NOTE: ALL BH'S WITH SUFFIX "A" = NEW LOCATIONS