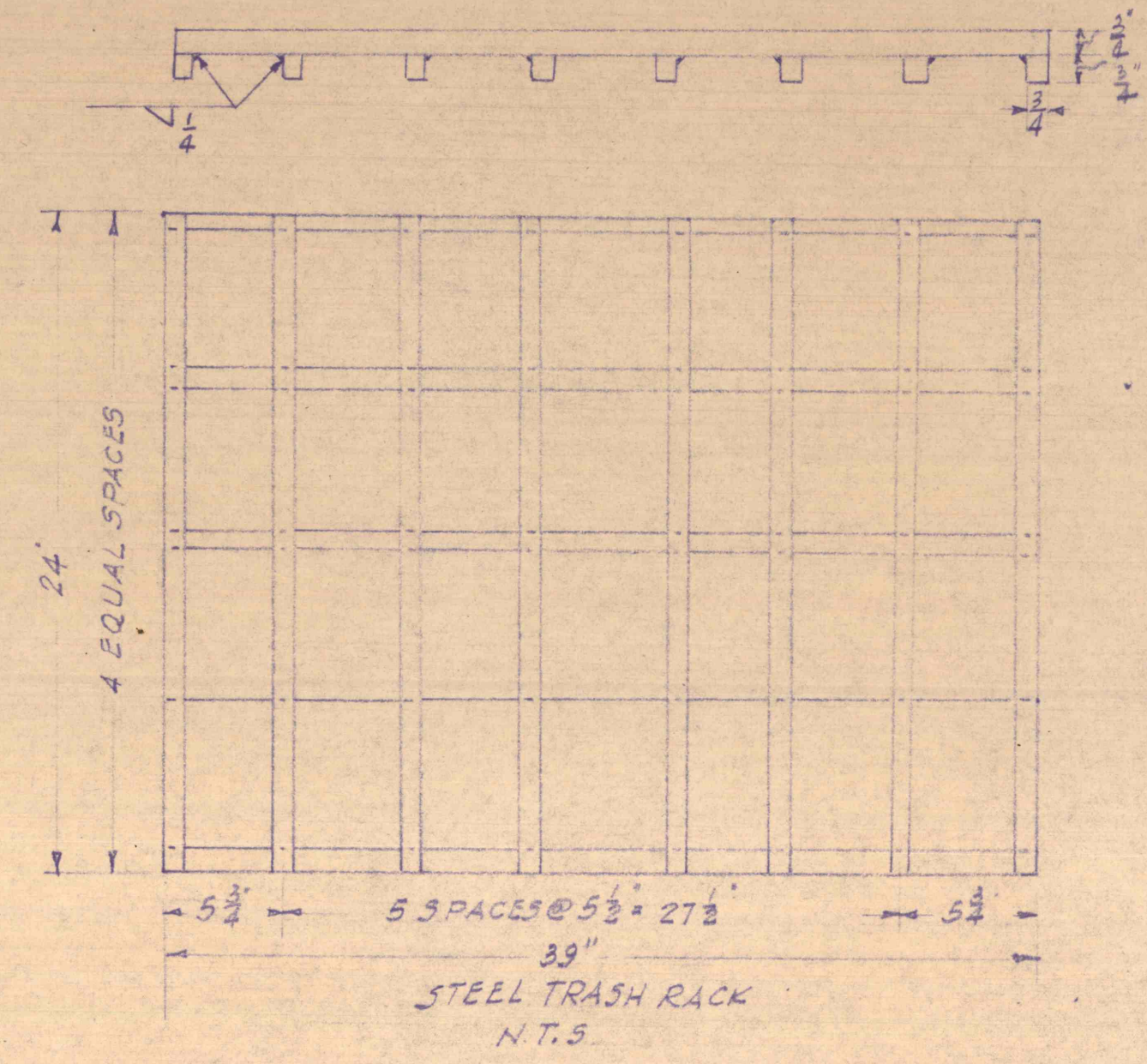
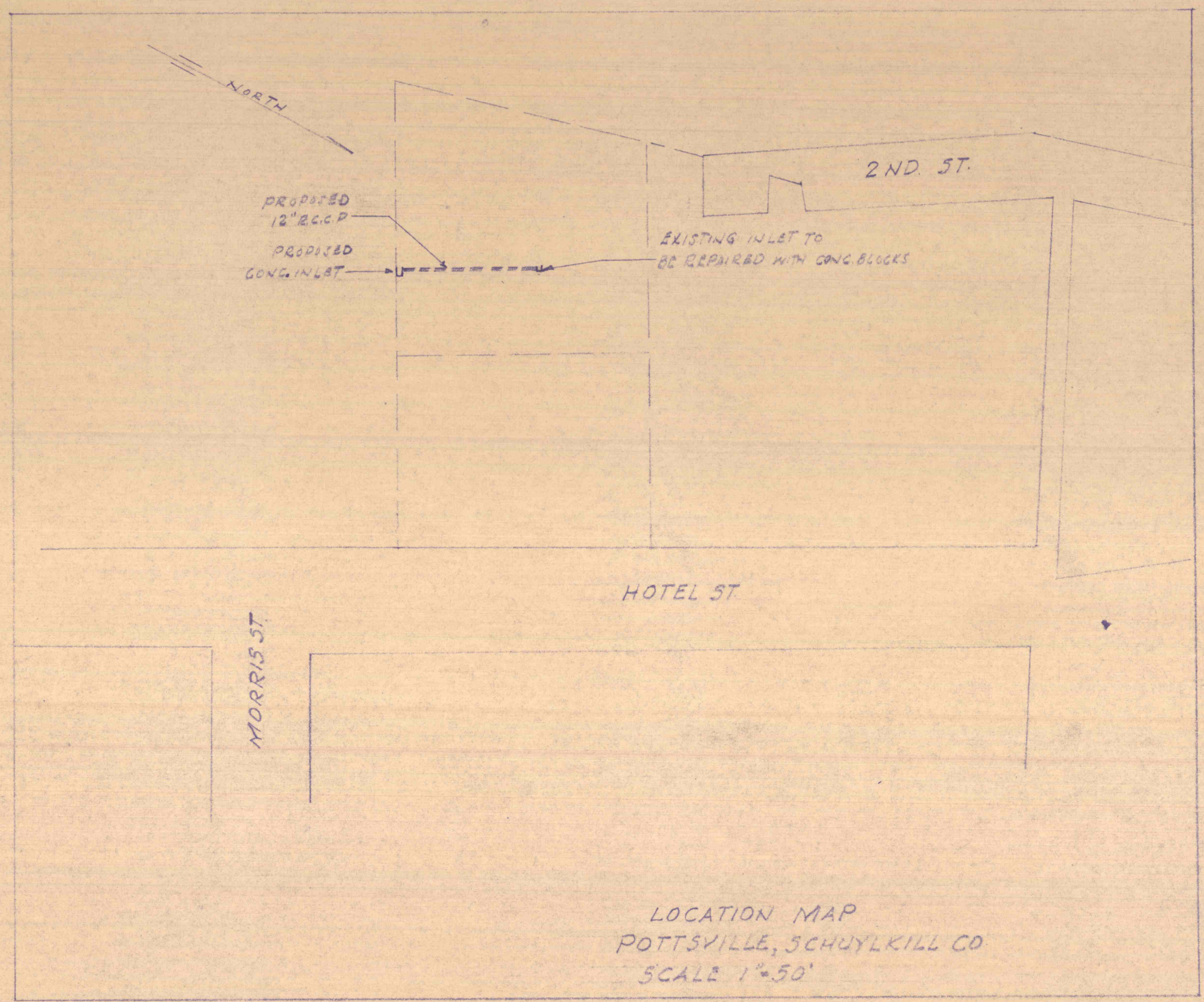
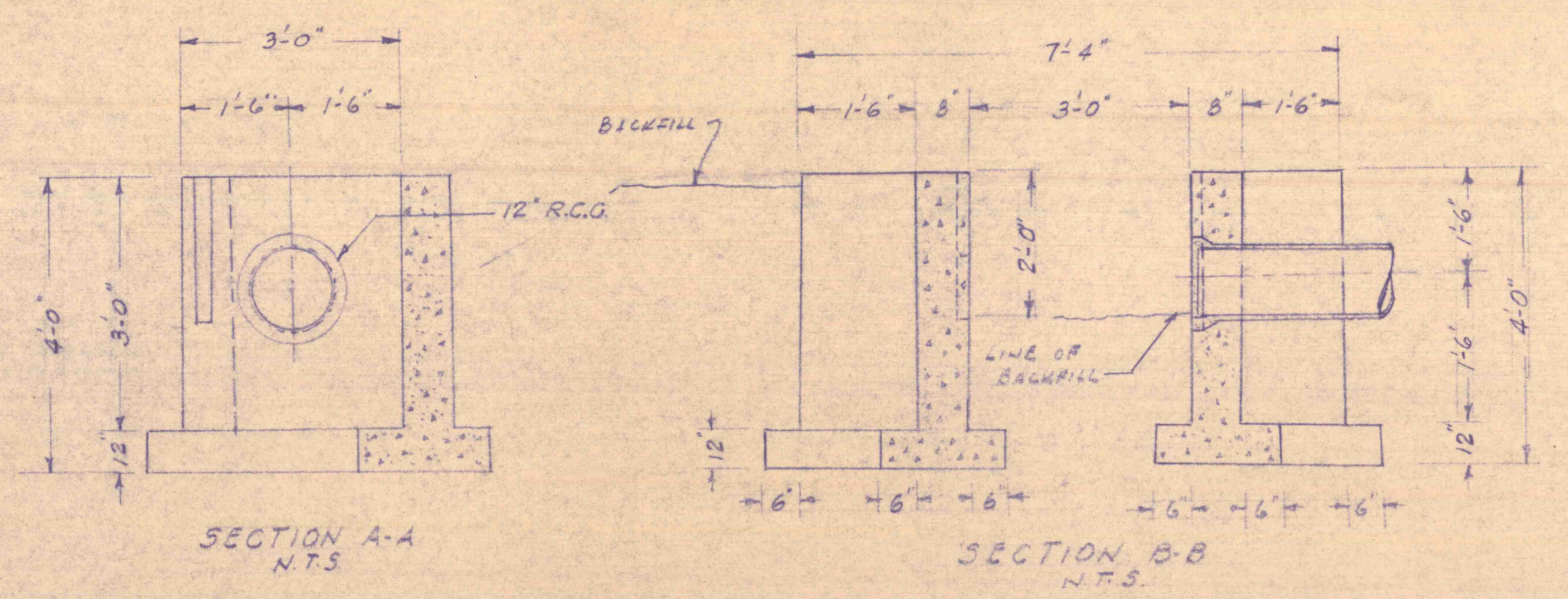
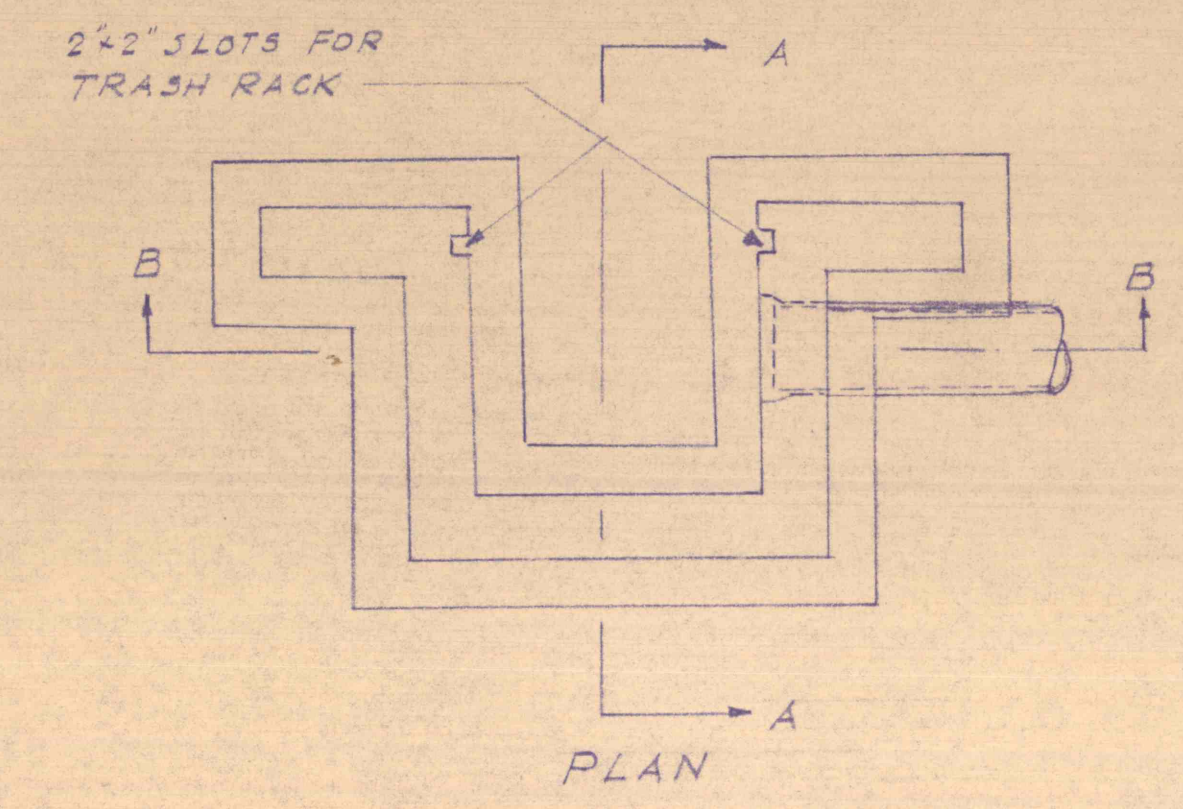


LIST OF QUANTITIES	
524	$\frac{3}{4}$ " x 3" STEEL BARS FOR TRASH RACK
824	$\frac{3}{4}$ " x 24" " " " "
204	CONCRETE FOR INLET
66 LF	12" R.C.C.P.
40.8	CEMENT SAND GROUT
12.84	GENL. BRICKS
48	EXCAVATION FOR PIPE TRENCH
60	EXCAVATION FOR CONC. INLET
37.45	CRUSHED AGGREGATE

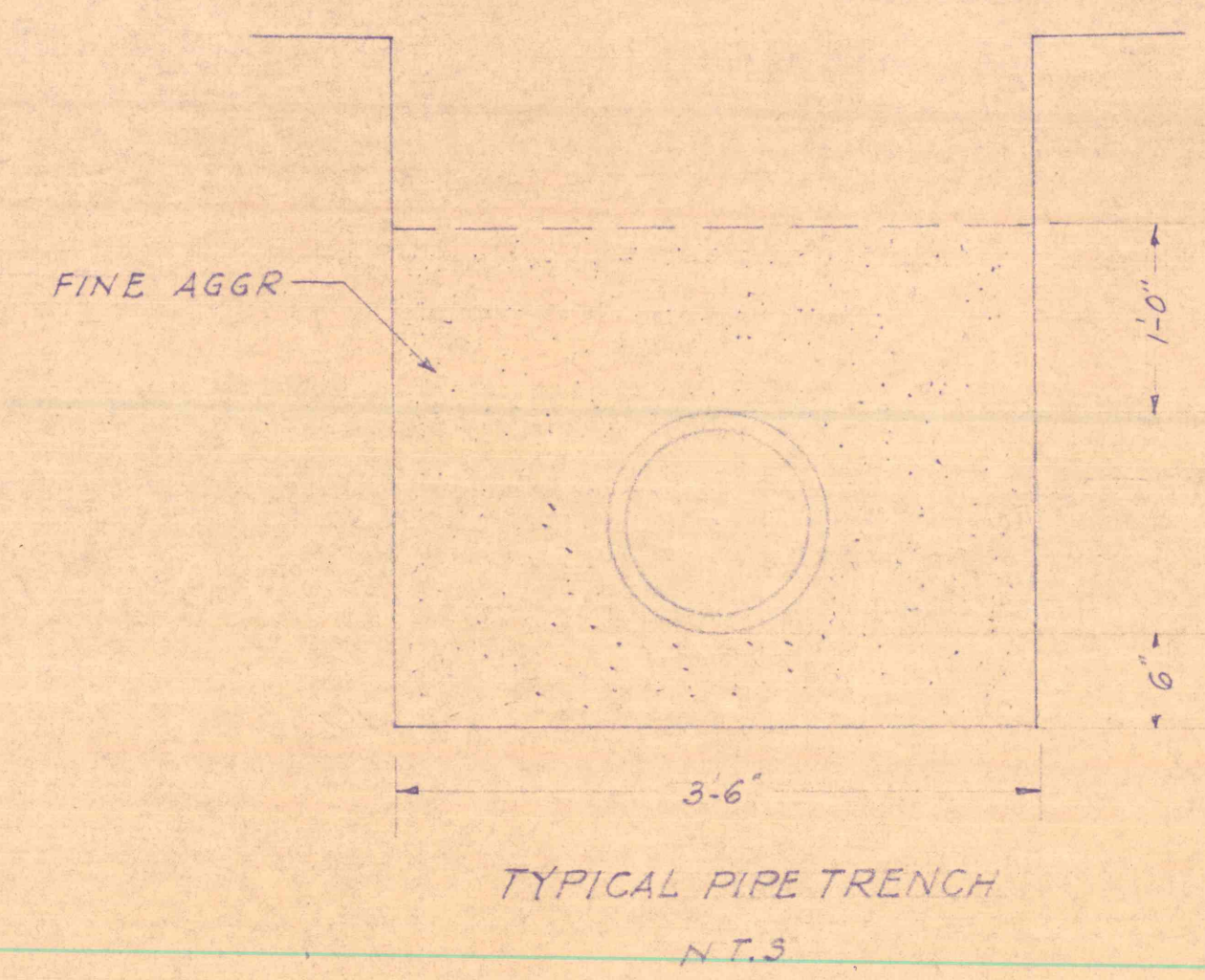
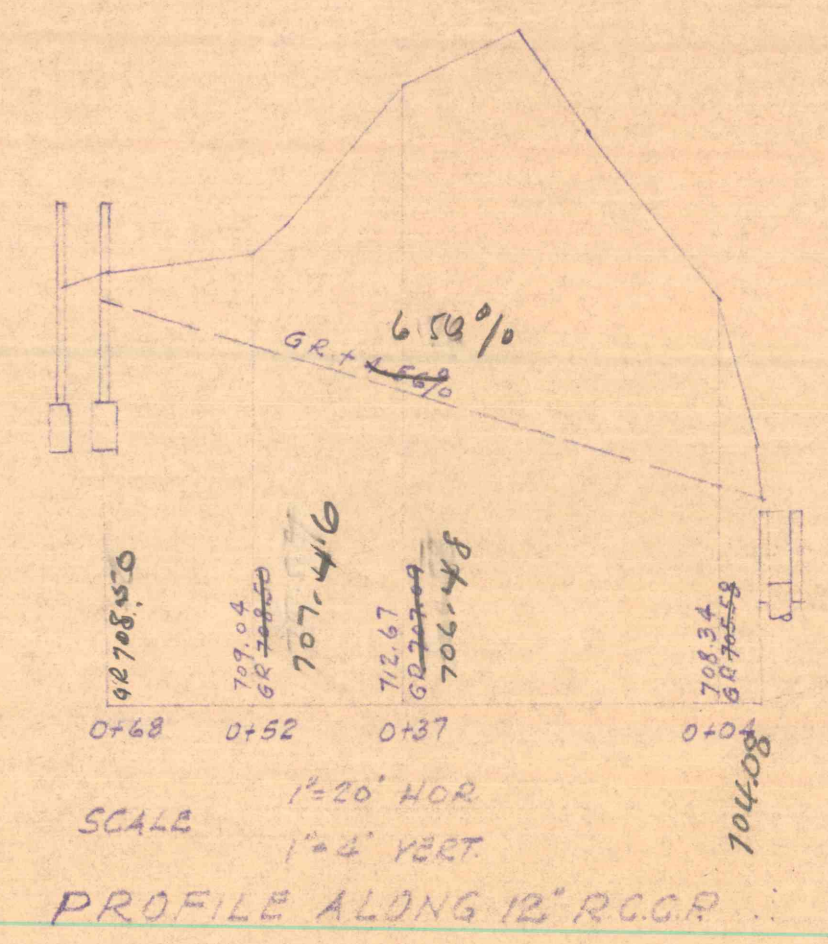
47
48
102m.



NOTE: TRASH RACK TO BE PAINTED WITH BITUMASTIC COMPOUND BEFORE INSTALLATION



70.86 ft
71.06 ft



COMMONWEALTH OF PENNSYLVANIA
DEPARTMENT OF ENVIRONMENTAL RESOURCES
OFFICE OF ENGINEERING AND CONSTRUCTION

PROJECT NO. A-47
PLAN FOR DIVERSION OF
ABANDONED SHERMAN MINE WATER
INTO CITY SEWER SYSTEM
POTTSVILLE SCHUYLKILL COUNTY

DESIGNED	SCALE: AS NOTED	DATE
DRAWN	SUBM.	
	RECOM.	
NO. DATE	REVISION	REV. CHK. APPR.
		GROUP LEADER APPR.