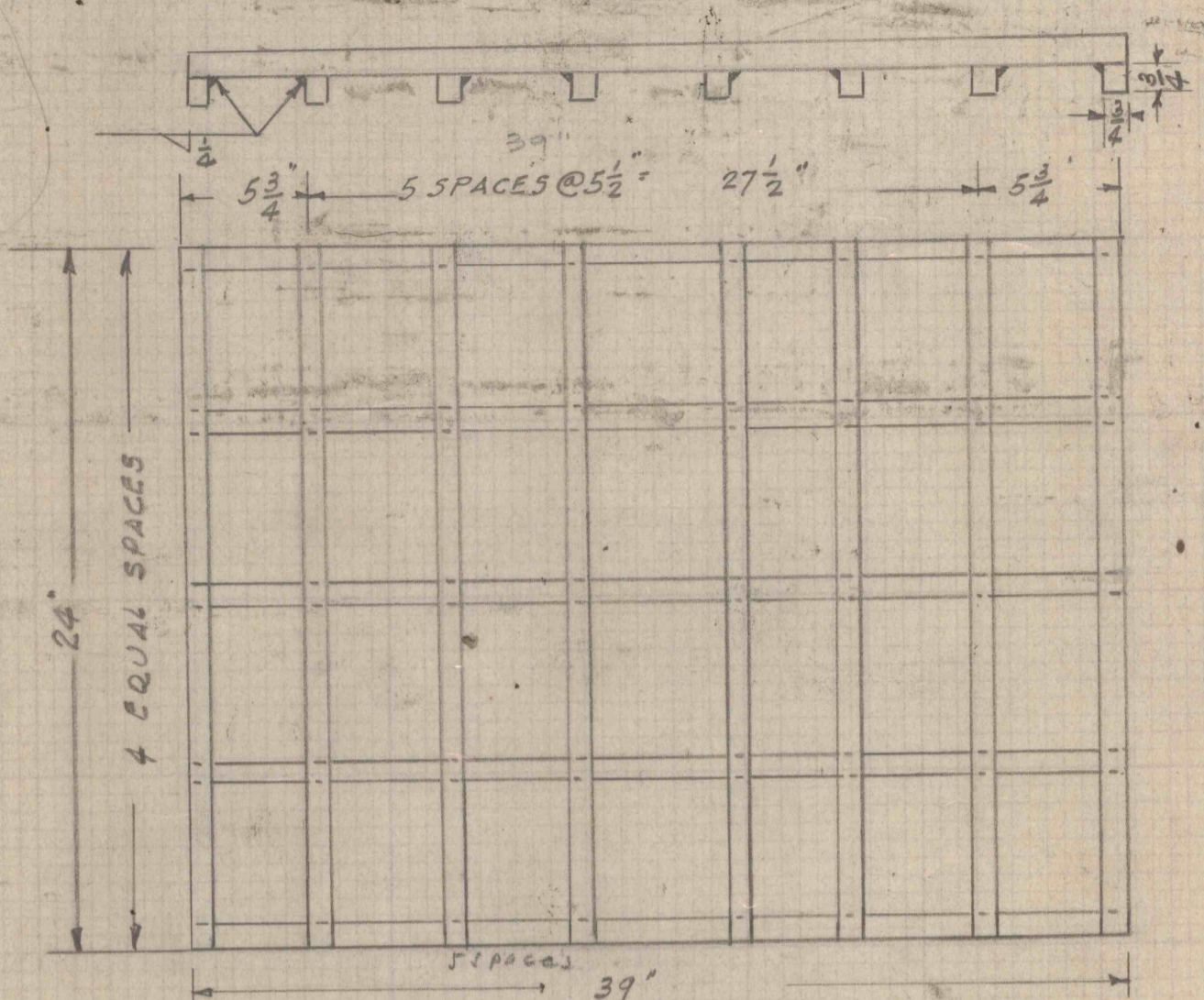


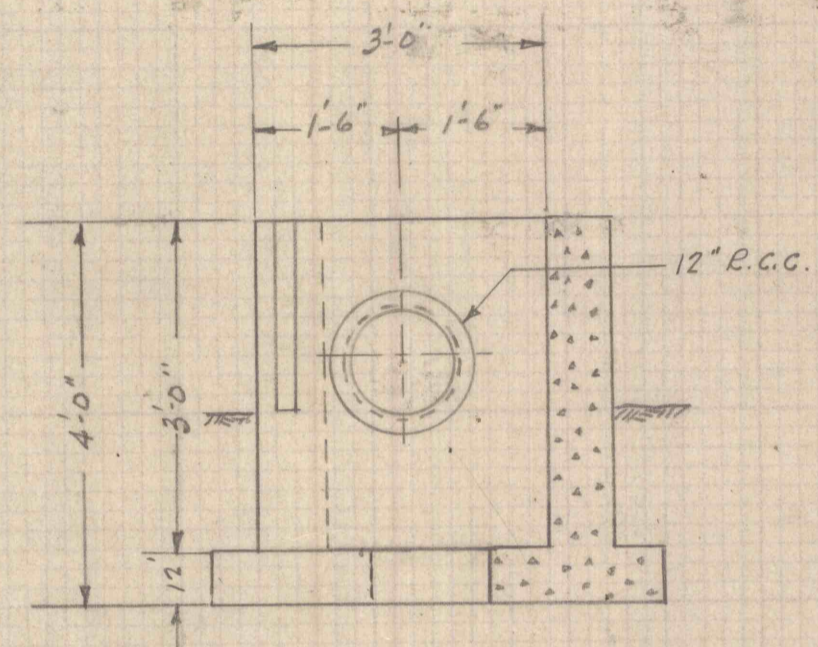
(Concrete blocks)

27 1/2  
5 3/4  
39

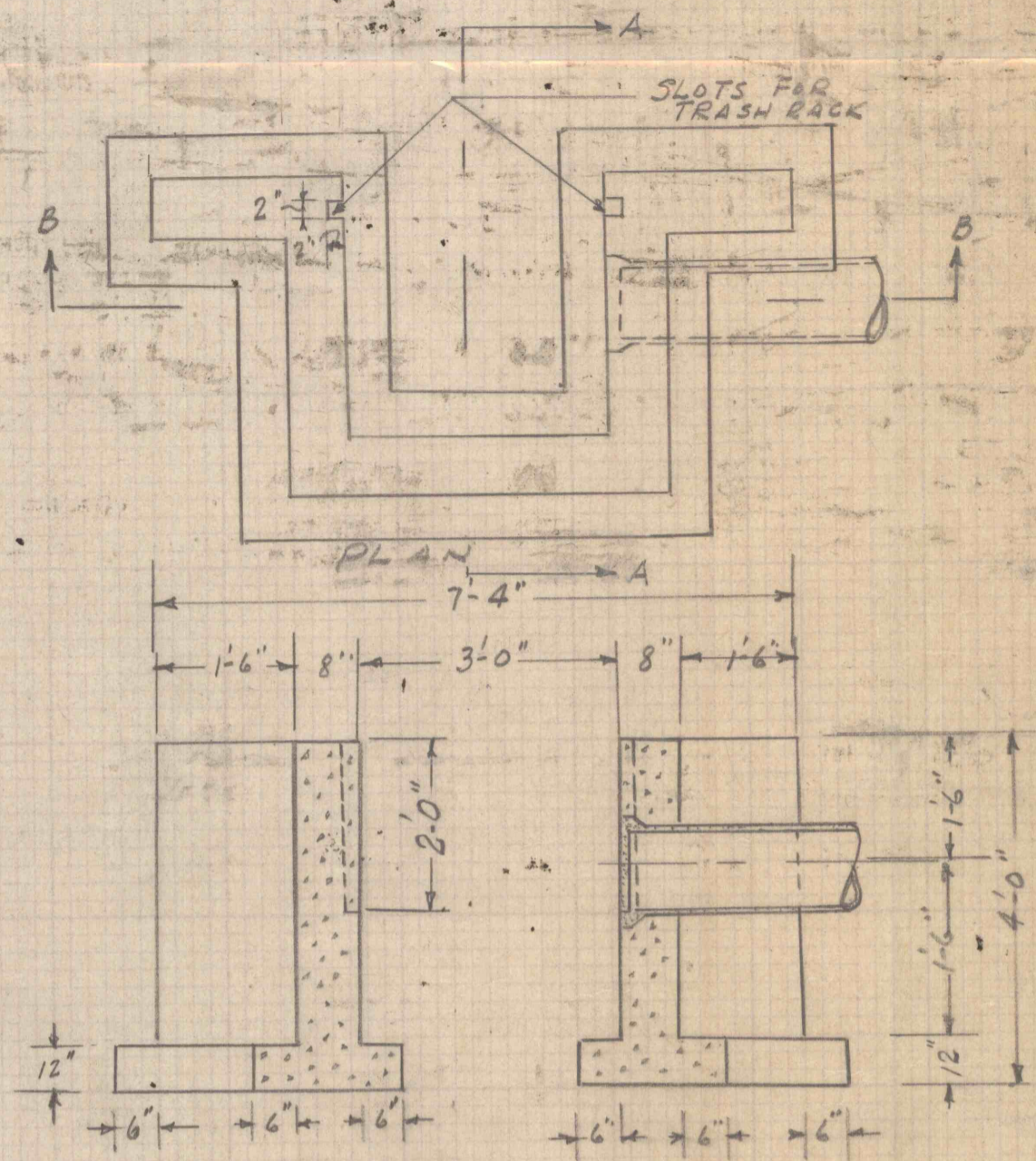


STEEL TRASH RACK  
N.T.S.

Note: TRASH RACK TO BE COATED WITH BITUMASTIC COMPOUND BEFORE INSTALLATION



SECTION A-A  
N.T.S.



SECTION B-B  
N.T.S.

MATERIAL LIST		
QUAN	MATERIAL	REMARKS
5	3/2 x 3/2 x 3'-3" STEEL BARS	TRASH RACK
8	3/2 x 3/2 x 2'-0" " "	" "
2 C.Y.	CONCRETE	INLET
7 1/8"	12" R.C.C. PIPE	
4 C.F.	CEMENT-SAND GROUT	R.C.C. JOINTS BUILD UP EXISTING MASONRY INLET TO NOT
3-0	CONCRETE BLOCKS	PIPE TRENCH.
41 C.Y.	ELGATION	CONC INLET.
17 6 C.Y.	"	"
200 BATT	1 x 1/2" LUMBER	TROUGH FOR CONCRETE
50 LIN N	1 x 3" LUMBER	" " "

REF. - A-47

SHERMAN GILLY FLOODING,  
HOTEL ST, POTTSVILLE, PA  
CONCRETE INLET & TRASH  
RACK DETAILS

11-28-72