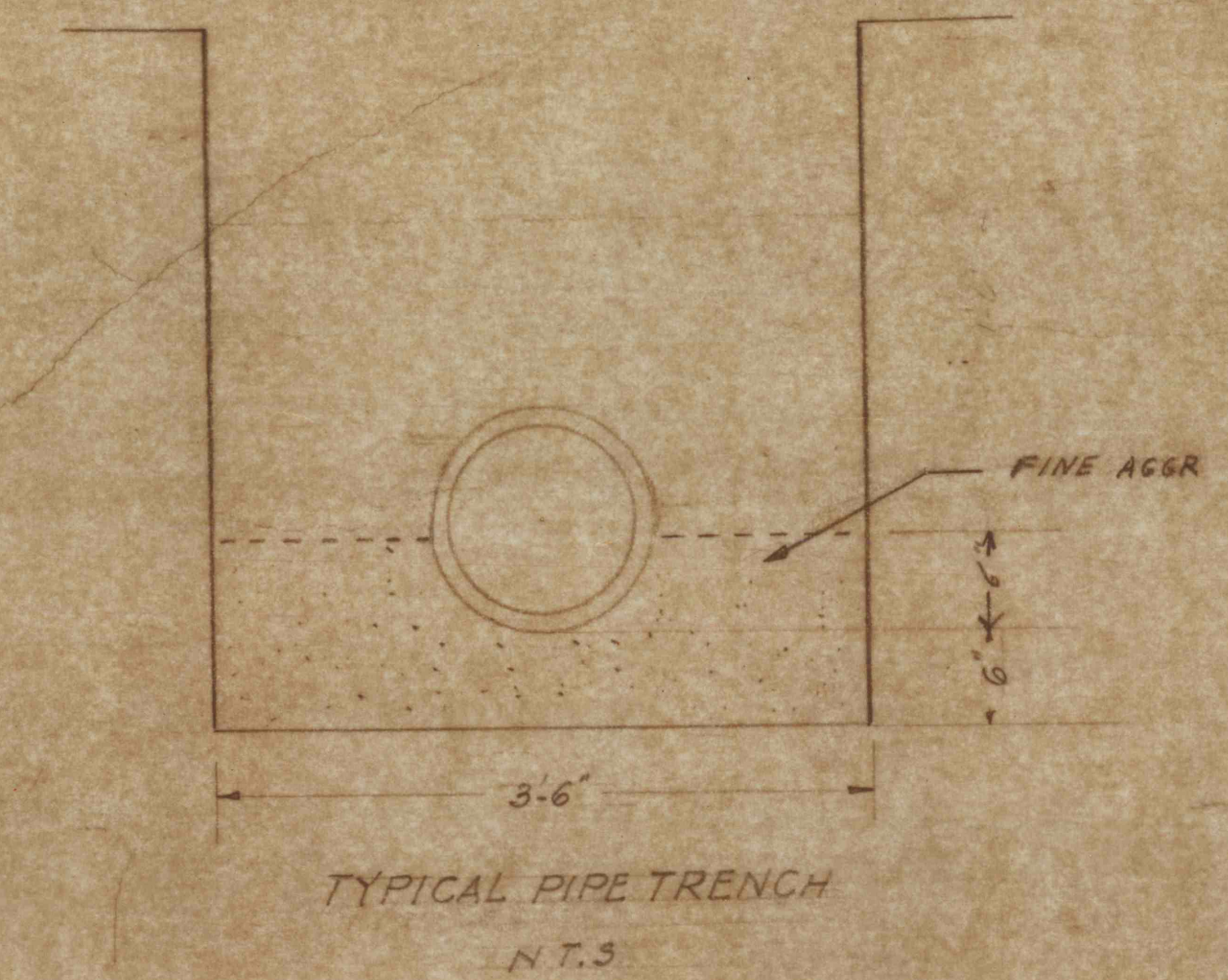
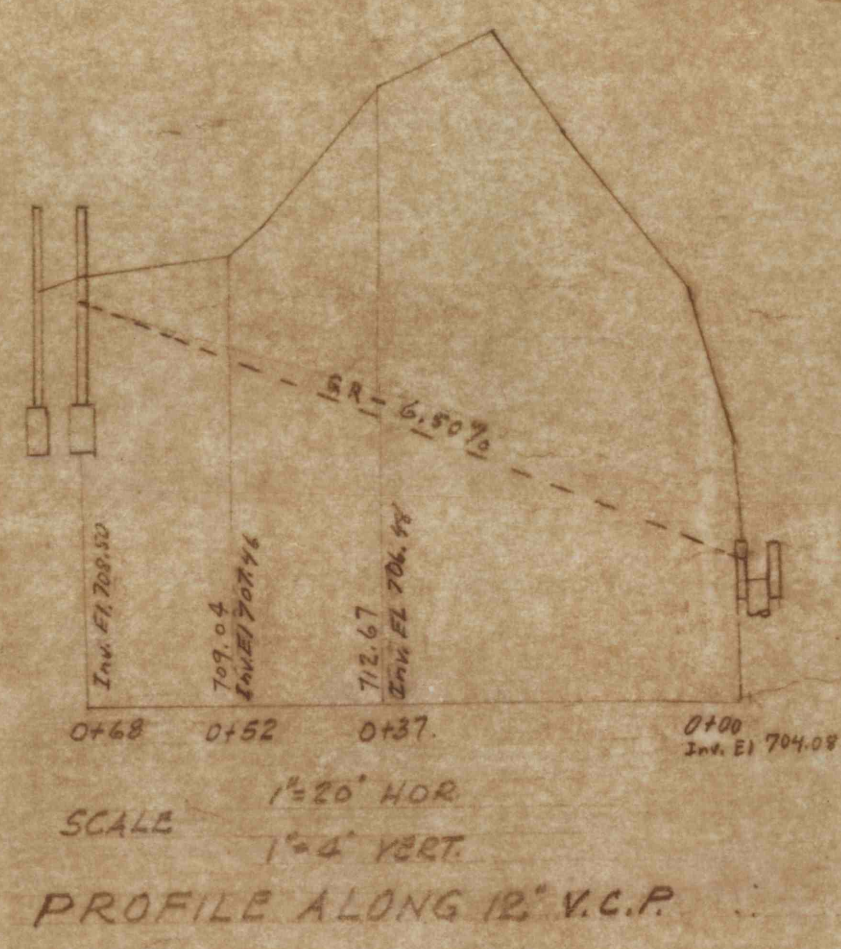
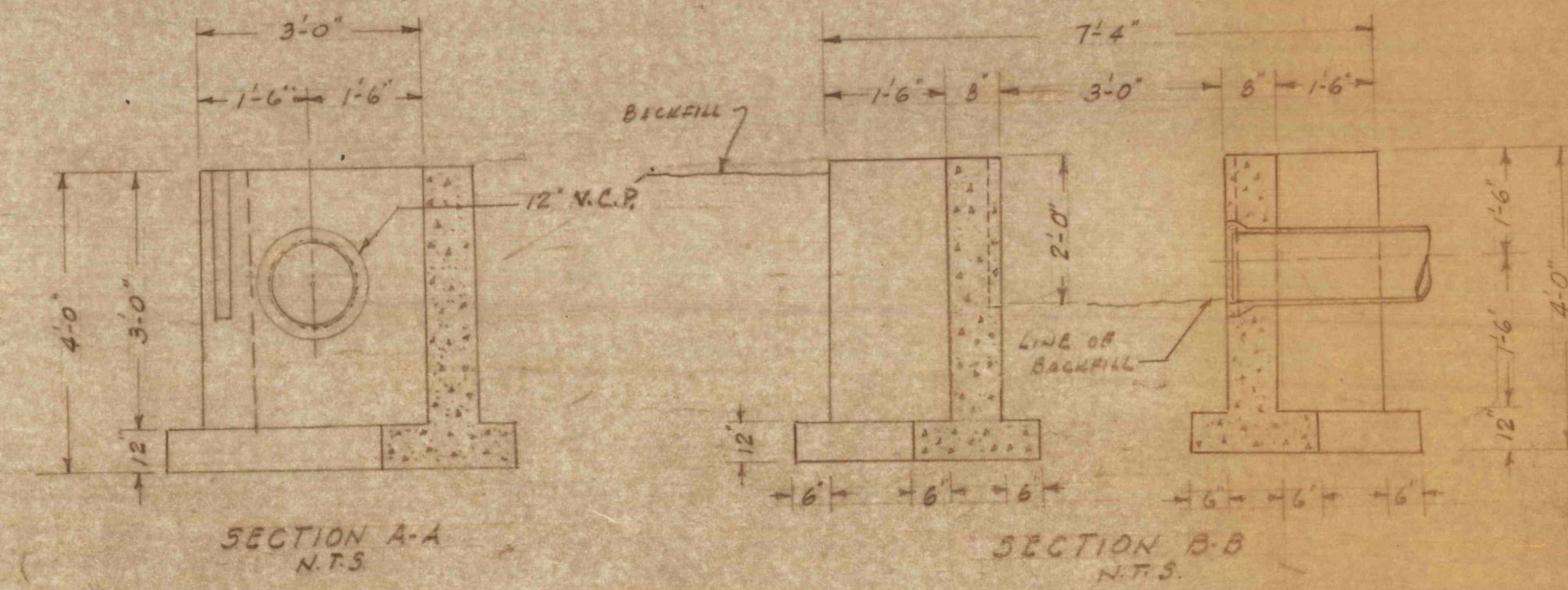
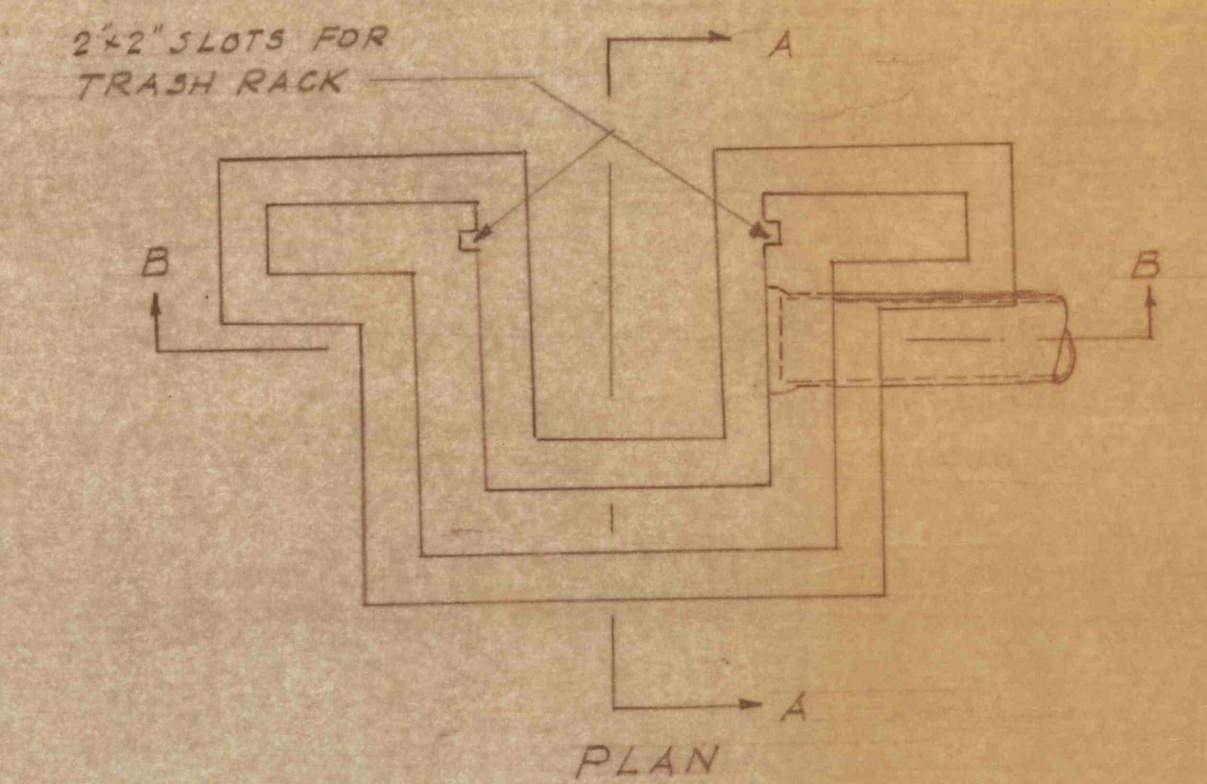
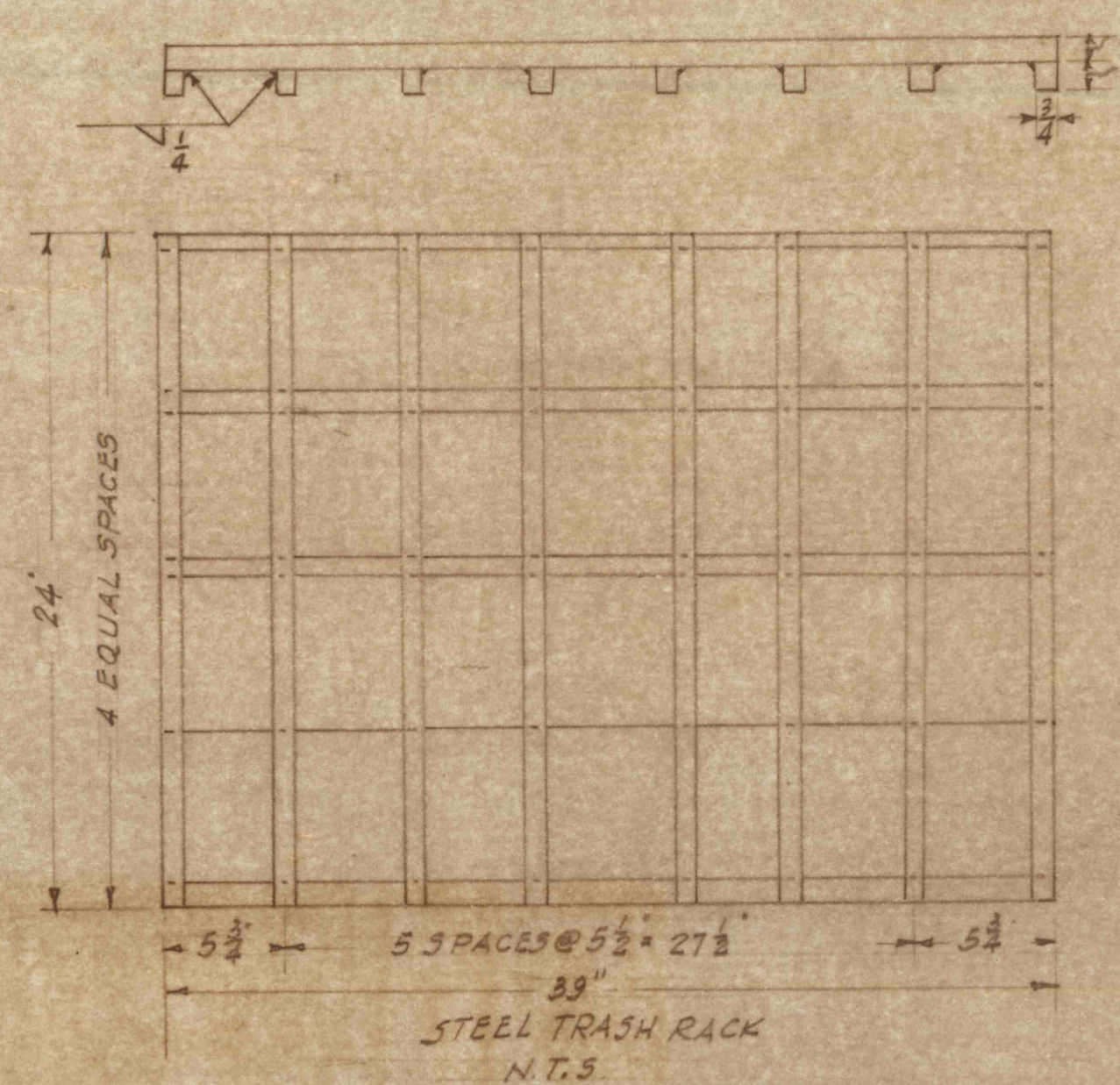
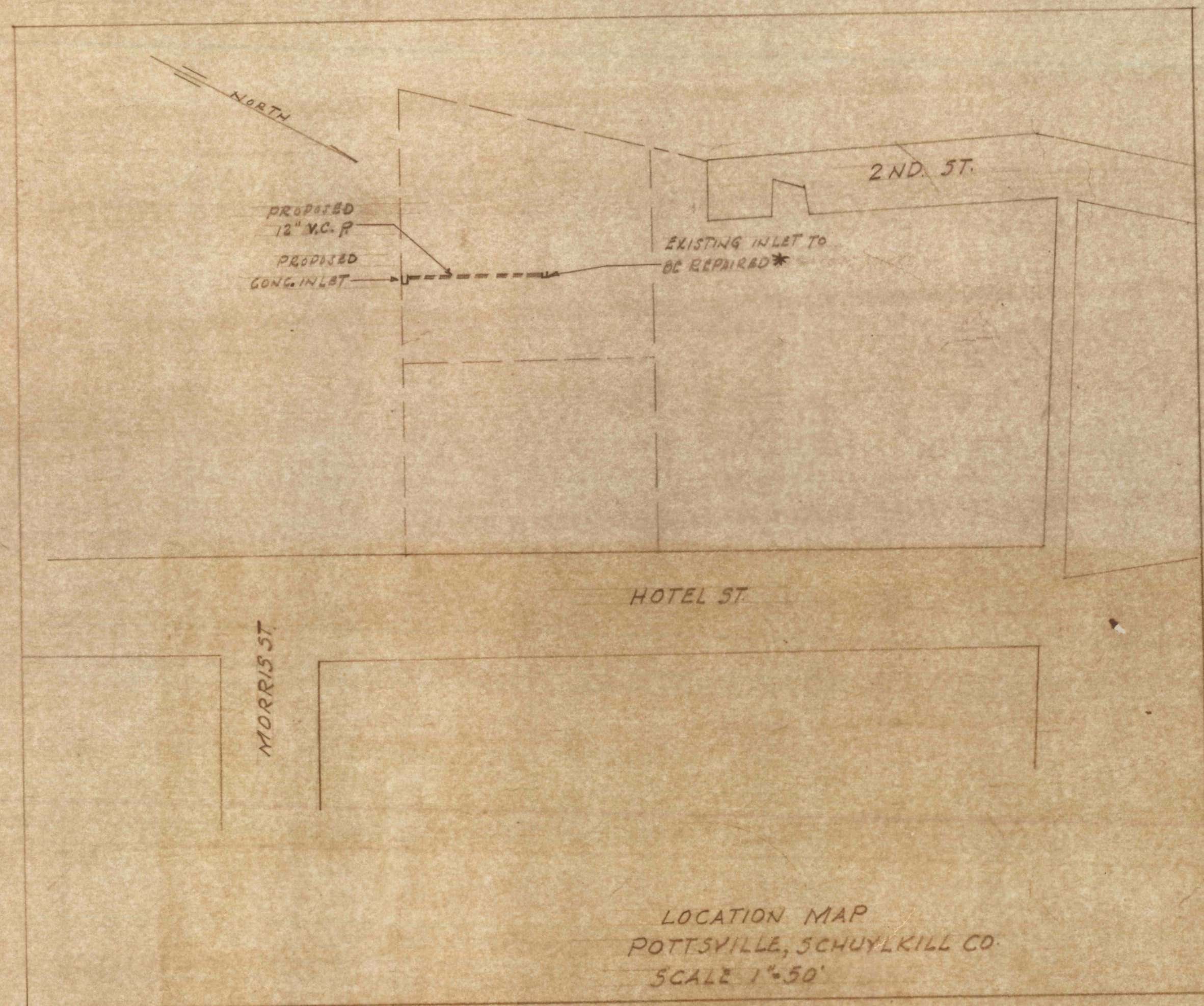


LIST OF QUANTITIES	
5 M	$\frac{3}{4} \times \frac{3}{4} \times 39$ " STEEL BARS FOR TRASH RACK
8 M	$\frac{3}{4} \times \frac{3}{4} \times 32$ " " "
2 CY	CONCRETE FOR NEW INLET
66 LF	12" Vitrified Clay Pipe
10 Tons	Crushed Aggregate
0.2 CY	Concrete for revised inlet
48 CY	EXCAVATION FOR PIPE TRENCH
8 CY	EXCAVATION FOR CONC. INLET



\* Remove south wall of existing stone inlets, place 12" V.C.P., replace wall to existing dimensions with 200psi concrete.

COMMONWEALTH OF PENNSYLVANIA  
DEPARTMENT OF ENVIRONMENTAL RESOURCES  
OFFICE OF ENGINEERING AND CONSTRUCTION

PROJECT NO A-47

PLAN FOR DIVERSION OF  
ABANDONED SHERMAN MINE WATER  
INTO CITY SEWER SYSTEM

POTTSVILLE SCHUYLKILL COUNTY

NO.	DATE	REVISION	REV.	CHK.	APPR.	GROUP LEADER	APPR.

DESIGNED: [Signature]  
DRAWN: [Signature]  
RECCM: [Signature]  
APPR: C. L. Connell

SCALE: AS NOTED