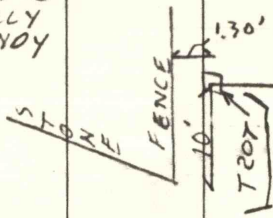


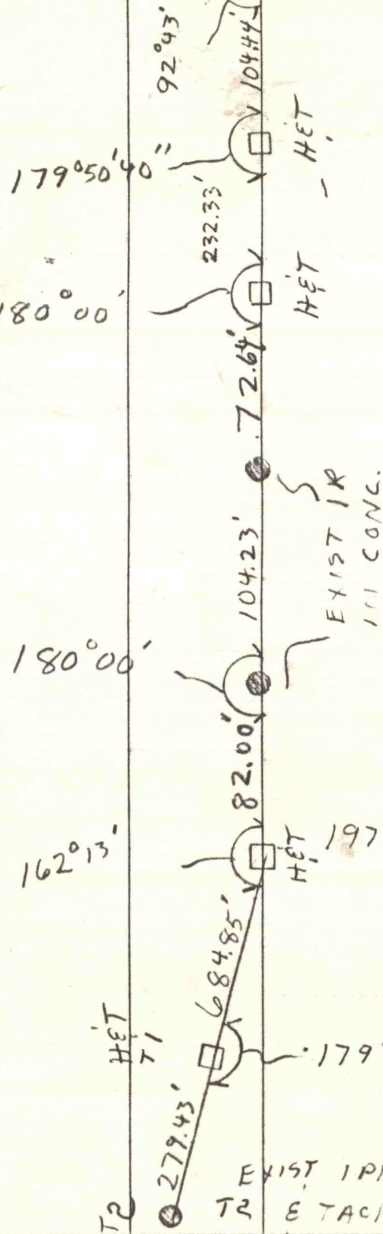
JOHN  
BLAZE  
SALLY  
RANDY

10-5-78 JOE LEES

1.30' BELTRAM  
281.92'



EXIST  
2" IR  
T208



REFERENCES T-205  
7.77 NW - ATTCH #50837  
60.98 NW - ATTCH #50833

60

T@T 205 PK NAIL WEST SIDE PA 940 T@S.2

BS T 204 (1304) 81°45'

FS RM 1	350°48' + 2°14'	310.6
100 SW CoR P.O	28°06' + 2°14'	105
101 NW " "	15°32' + 1°40'	153
102 E. MAG PA 940	81°45'	6
103 " " " "	81°45'	29
104 GAS PIPE LINE	111°11'	46

061 454-0071

T@ER1 PK NAIL WEST SIDE PA 940 T@50

BS T 205 170°48'

FS ER 2	80°24' + 0°07'	42.82
105 SW CoR BROWN'S	30°26' + 1°17'	240.93
106 SE CoR " "	45°57' + 1°26'	96
107 SW " SMITH'S	51°05' + 0°45'	128
108 SE " " "	37°13' + 0°31'	186
109 NE " PECILE	96°02' - 0°45'	174
110 NW " " "	100°15' - 0°55'	138
111 NE " DOUGHERTY	107°10' - 1°00'	114
112 NW " " "	121°16' - 1°20'	78

283.15

T@ER2 PK NAIL @ PI SMITH & SEC. A S TS

BS ER1	260°24'	130°09' + 1°50'	203.80
FS ER3	303°14' + 4°52'	108	
113 SW CoR LAPUTKA	327°42' + 6°08'	80	
114 SE " " "	207°49' + 2°31'	68	
115 NE " FRECHUK	229°53' + 2°15'	92	
116 NW " " "	29°54' + 1°54'	69	
117 NW " WARNER	69°04' - 1°30'	45	
118 SW " " "	126°33' - 1°10'	62	
119 NW " NOVAK	144°30' - 0°57'	101	
120 SW " " "			