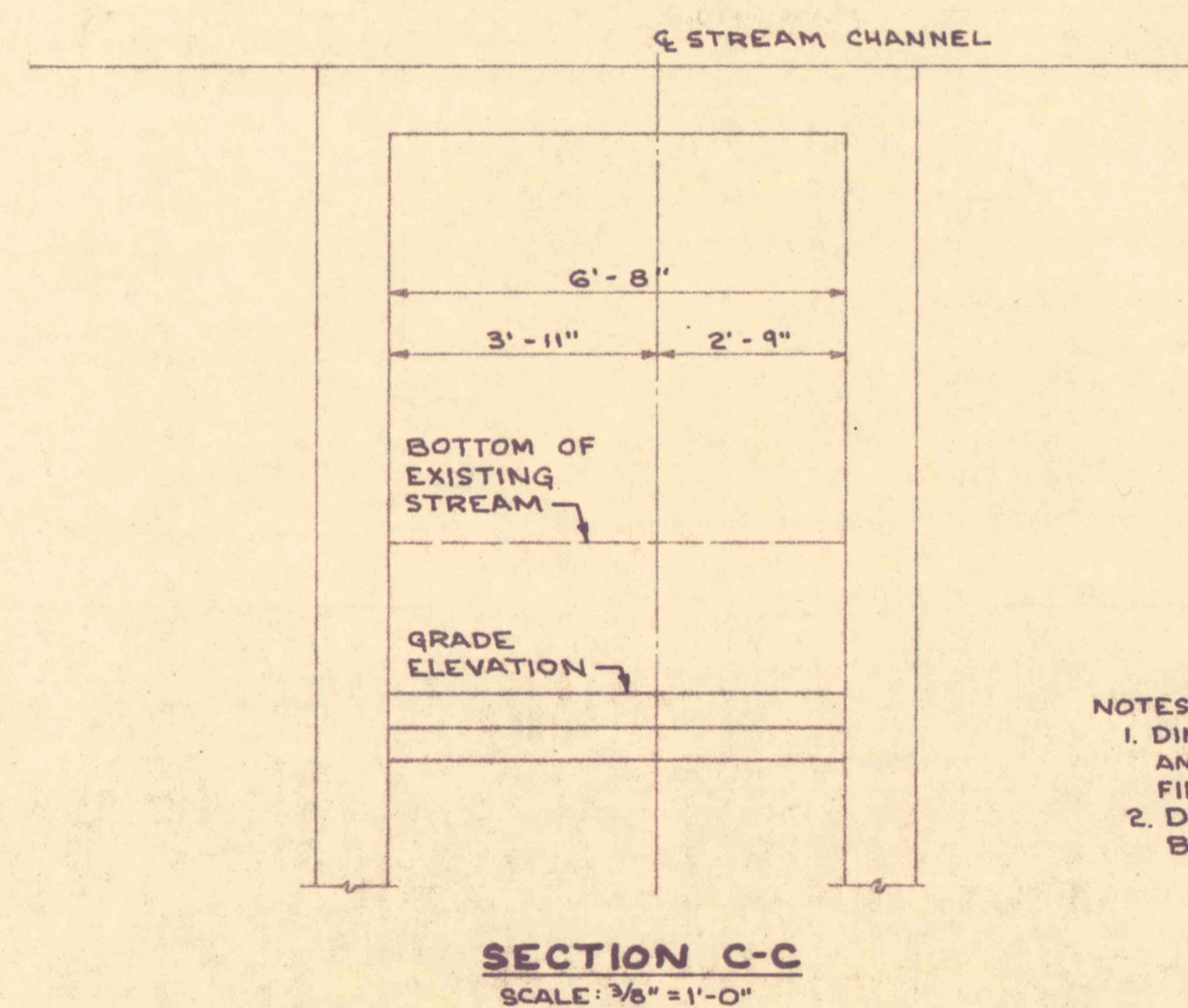
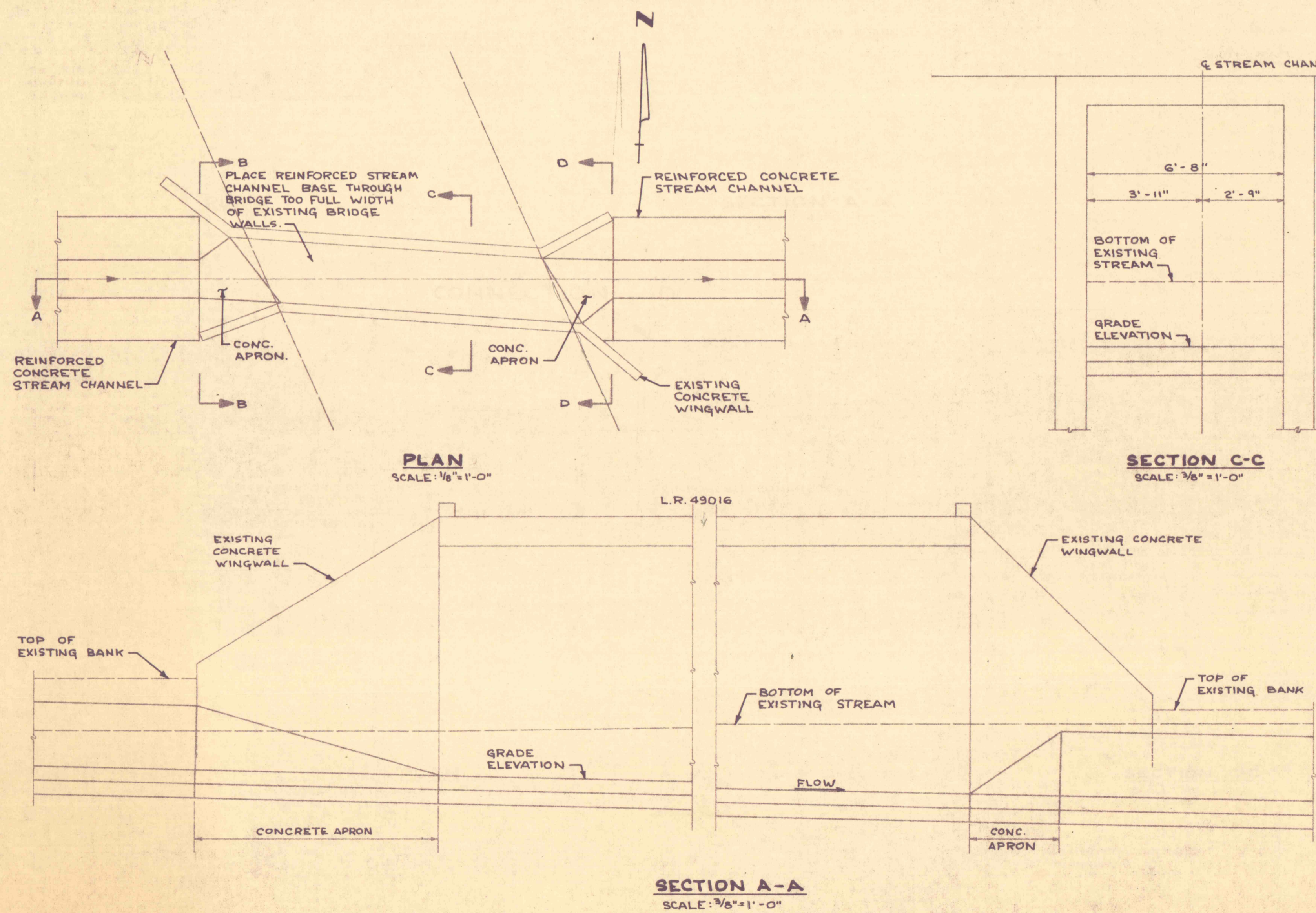
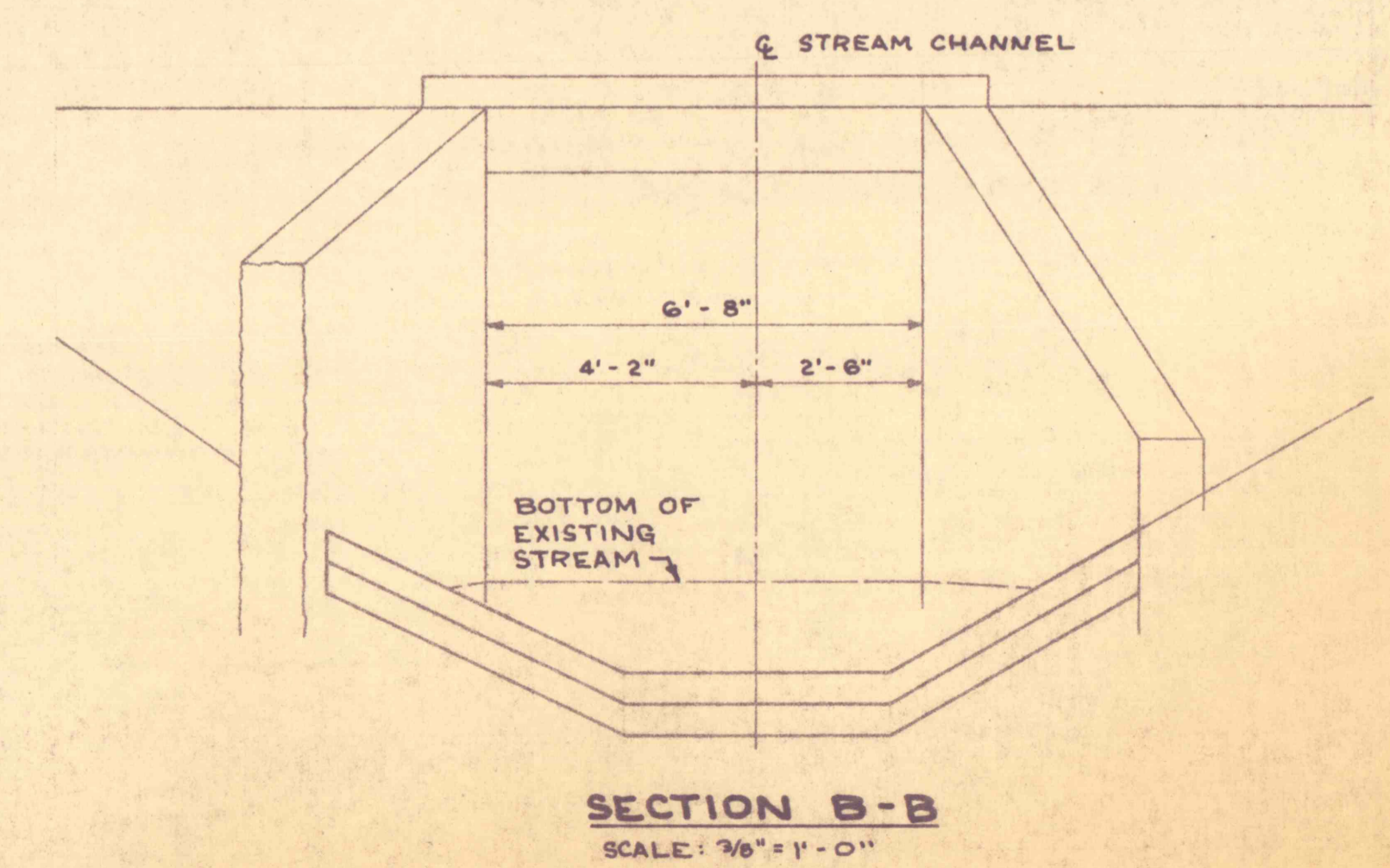
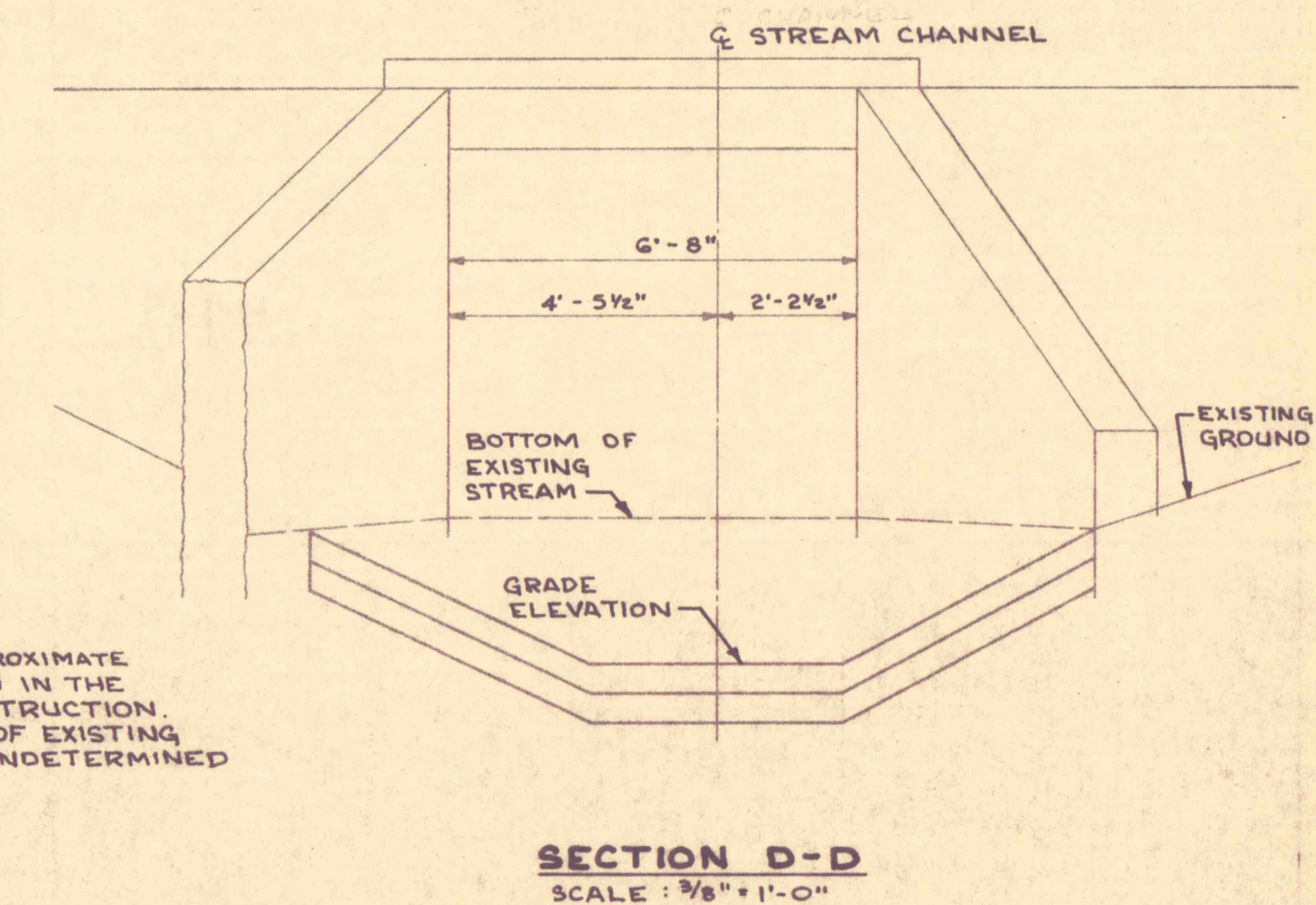


CONNECTION (D)

FILL AREA (E)



- NOTES:**
1. DIMENSIONS ARE APPROXIMATE AND MUST BE VERIFIED IN THE FIELD PRIOR TO CONSTRUCTION.
 2. DEPTH TO BOTTOM OF EXISTING BRIDGE WALLS IS UNDETERMINED.



HIGHWAY CROSSING (F)

NO.	DATE	REVISION	APPR.
SUBMITTED			
PROFESSIONAL			
APPROVED			
CHIEF - DIVISION OF MINE RECLAMATION			
APPROVED			
DIRECTOR - BUREAU OF DESIGN			
REGISTERED PROFESSIONAL ENGINEER			
DATE			
COMMONWEALTH OF PENNSYLVANIA			
DEPARTMENT OF ENVIRONMENTAL RESOURCES			
OFFICE OF RESOURCES MANAGEMENT			
CONTRACT NO SL 113-4-1			
MINE DRAINAGE POLLUTION ABATEMENT			
LOCUST CREEK			
SHAMOKIN CREEK WATERSHED			
NORTHUMBERLAND COUNTY			
PENNSYLVANIA			
GANNETT FLEMING CORDDRY & CARPENTER, INC.			
Consulting Engineers			
P.O. BOX 1963		HARRISBURG, PA.	
MISCELLANEOUS DETAILS			
DRAWN BY	R.C.L.	DATE	
CHECKED BY	W.J.S.	SCALE	AS SHOWN
DRAWING NO.			19 of 21