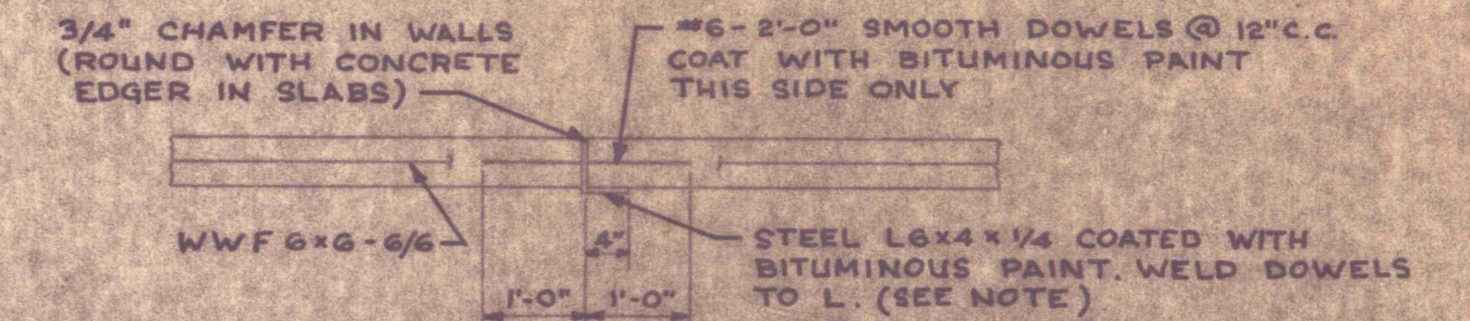
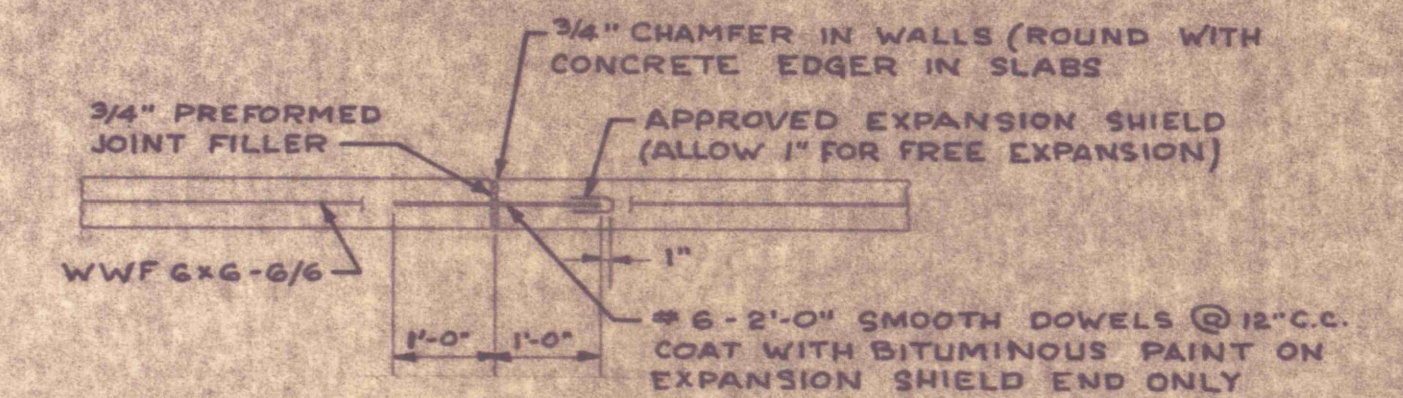


**TYPICAL SECTION
UNLINED CHANNEL**

DIVERSION DITCH SCHEDULE			
DESIGNATION	W	D	T
A	3'-0"	1'-0"	7'-0"
B	3'-0"	1'-3"	8'-0"
C	3'-0"	1'-0"	7'-0"
D	4'-0"	1'-3"	9'-0"

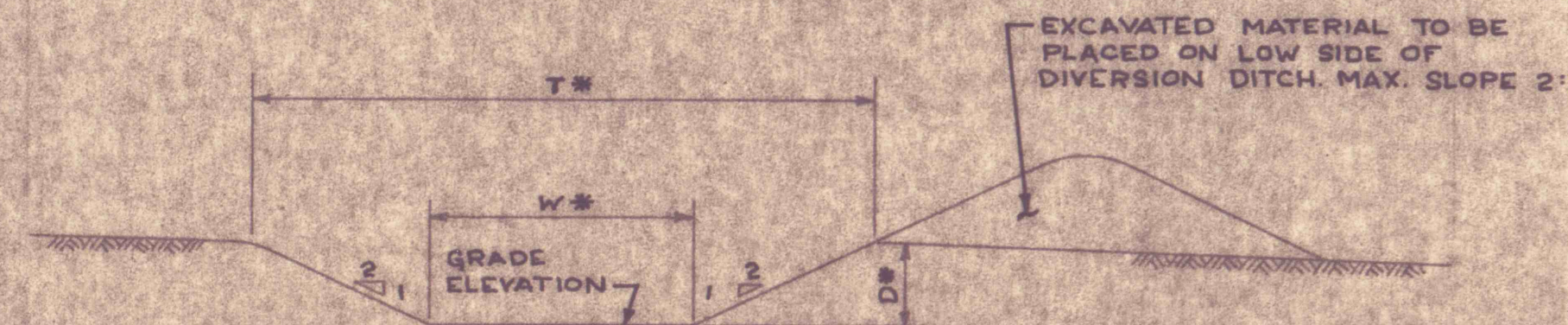


**JOINT TYPE 1
(CONTRACTION - 30' SPACING)**



**JOINT TYPE 2
(EXPANSION - 90' SPACING)**

NOTE:
IN JOINT TYPE 1, THE STEEL L SHALL BE OMITTED IN VERTICAL WALLS, SINCE CONTINUOUS PLACING OF WALL SECTIONS IS NOT PERMITTED. IN SLABS THE L IS INDICATED TO ALLOW CONTINUOUS POURING. IN THE EVENT THE CONTRACTOR PROPOSES TO POUR ALTERNATE SLABS, THE L MAY BE OMITTED PROVIDED THAT DOWELS ARE ADEQUATELY SUPPORTED IN END FORMS WHERE THE L IS OMITTED, THE JOINT SHALL BE COATED WITH BITUMINOUS PAINT BEFORE POURING OF SUCCESSIVE SECTIONS.



* FOR DIMENSIONS SEE DIVERSION DITCH SCHEDULE

**TYPICAL SECTION
SURFACE WATER DIVERSION DITCH**

**TYPICAL CONSTRUCTION JOINTS
FOR REINFORCED CONCRETE
STREAM CHANNEL**

TEMPORARY BRACING TO BE PLACED BEFORE BACKFILL TAMPING AND TO BE REMOVED WHEN DIRECTED BY THE DEPARTMENT.

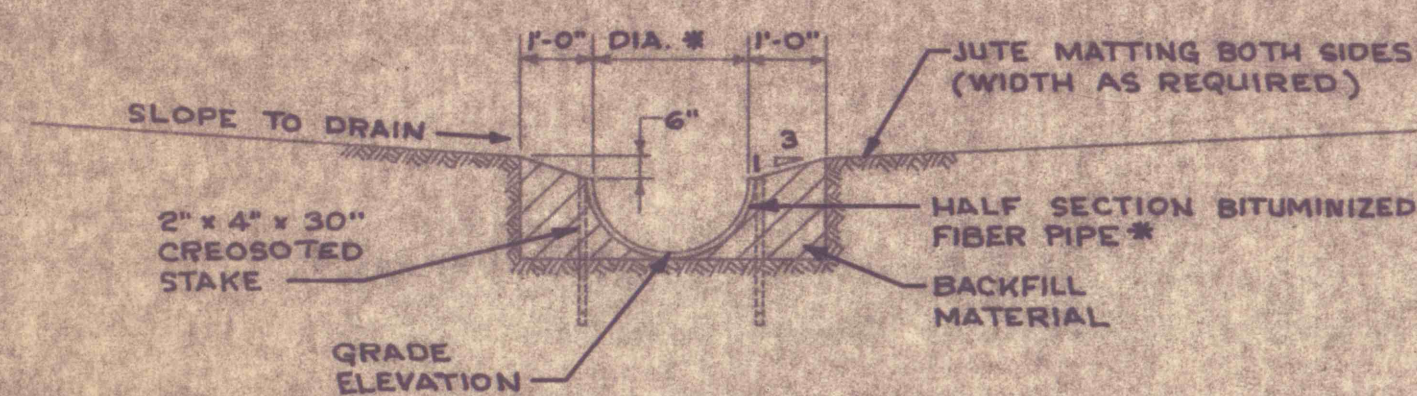
LOWEST SECTION TO BE OVERLAPPED 3" BY NEXT SECTION. STAKES TO BE DRIVEN AT OVERLAP AND EVERY 5' JOINTS TO BE SEALED WITH A MASTIC SEALING COMPOUND. USE 6-8 SCREW TYPE NAILS.

BACKFILL TO BE HAND TAMPED IN 6" LAYERS

STAKES TO BE MINIMUM 2" x 4" x 30" CREOSOTED WOOD AND ARE ATTACHED BY MEANS OF 1/2" GALVANIZED SCREW TYPE NAILS DRIVEN THROUGH FIBER PIPE AND STAKE.

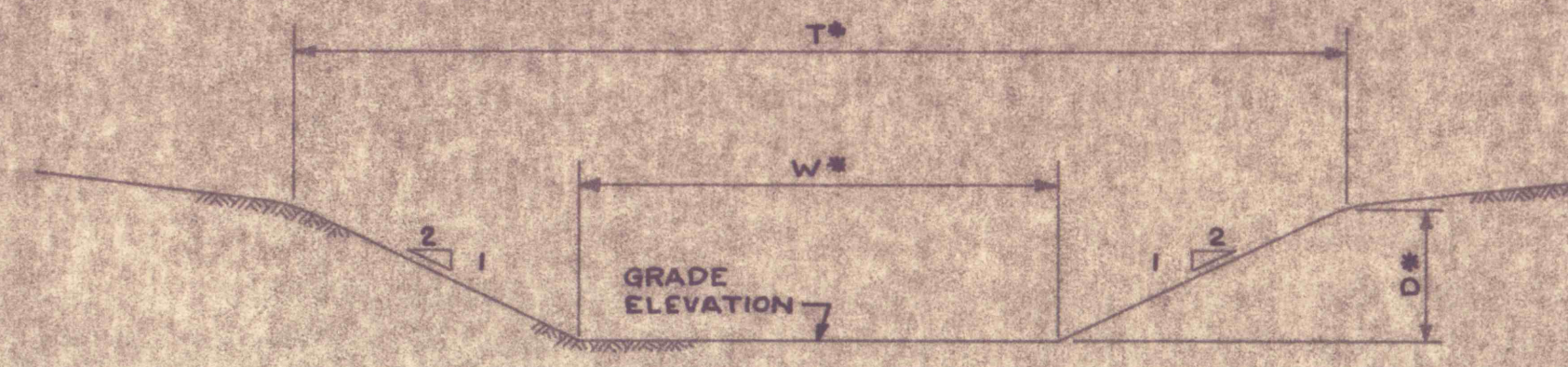
FLUME INSTALLATION

FLUME SCHEDULE	
DESIGNATION	DIAMETER
A	30"
B	36"
C	30"



**TYPICAL SECTION
FLUME**

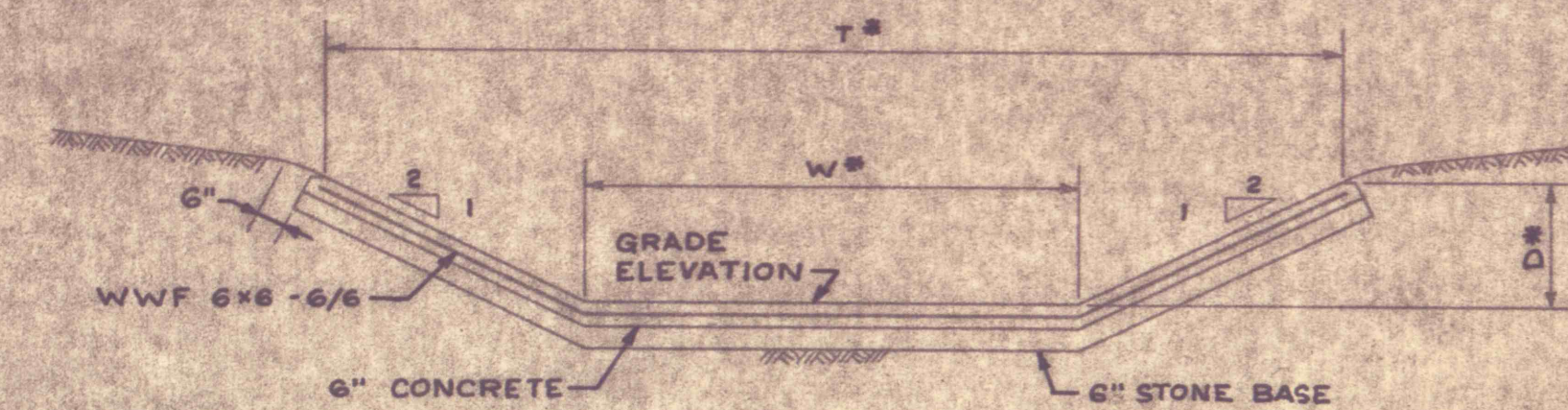
STREAM CHANNEL SCHEDULE			
STATION	W	D	T
96+36 TO 131+26	14'-0"	2'-3"	23'-0"
131+26 TO 137+45.12	10'-0"	2'-0"	18'-0"
137+45.12 TO 161+15.12	8'-0"	2'-0"	16'-0"
161+15.12 TO 180+25.12	6'-0"	2'-0"	14'-0"
180+25.12 TO 189+65.12	5'-0"	2'-0"	13'-0"
189+65.12 TO 190+05.12	4'-0"	2'-0"	12'-0"



* FOR DIMENSIONS SEE STREAM CHANNEL SCHEDULE

**TYPICAL SECTION
STREAM CHANNEL**

REINFORCED CONCRETE STREAM CHANNEL SCHEDULE			
STATION	W	D	T
0+00 TO 4+00	6'-0"	2'-3"	15'-0"
4+00 TO 85+44	5'-0"	2'-3"	14'-0"
85+44 TO 96+36	4'-0"	2'-3"	13'-0"



* FOR DIMENSIONS SEE REINFORCED CONCRETE STREAM CHANNEL SCHEDULE

**TYPICAL SECTION
REINFORCED CONCRETE STREAM CHANNEL**

NO.	DATE	REVISION	APPR.
SUBMITTED			
APPROVED			
DIRECTOR - BUREAU OF STREAMS			
REGISTERED PROFESSIONAL ENGINEER			
DATE			

COMMONWEALTH OF PENNSYLVANIA
DEPARTMENT OF ENVIRONMENTAL RESOURCES
OFFICE OF RESOURCES MANAGEMENT
CONTRACT NO SL 113-4-1
MINE DRAINAGE POLLUTION ABATEMENT
LOCUST CREEK
SHAMOKIN CREEK WATERSHED
NORTHUMBERLAND COUNTY
PENNSYLVANIA

GANNETT FLEMING CORDRY & CARPENTER, INC.
Consulting Engineers
P.O. BOX 1963 HARRISBURG, PA.

MISCELLANEOUS DETAILS

DRAWN BY R.C.L.	DATE	SHEET NO. 17 of 21
CHECKED BY W.J.S.	SCALE NO SCALE	

17 of 21