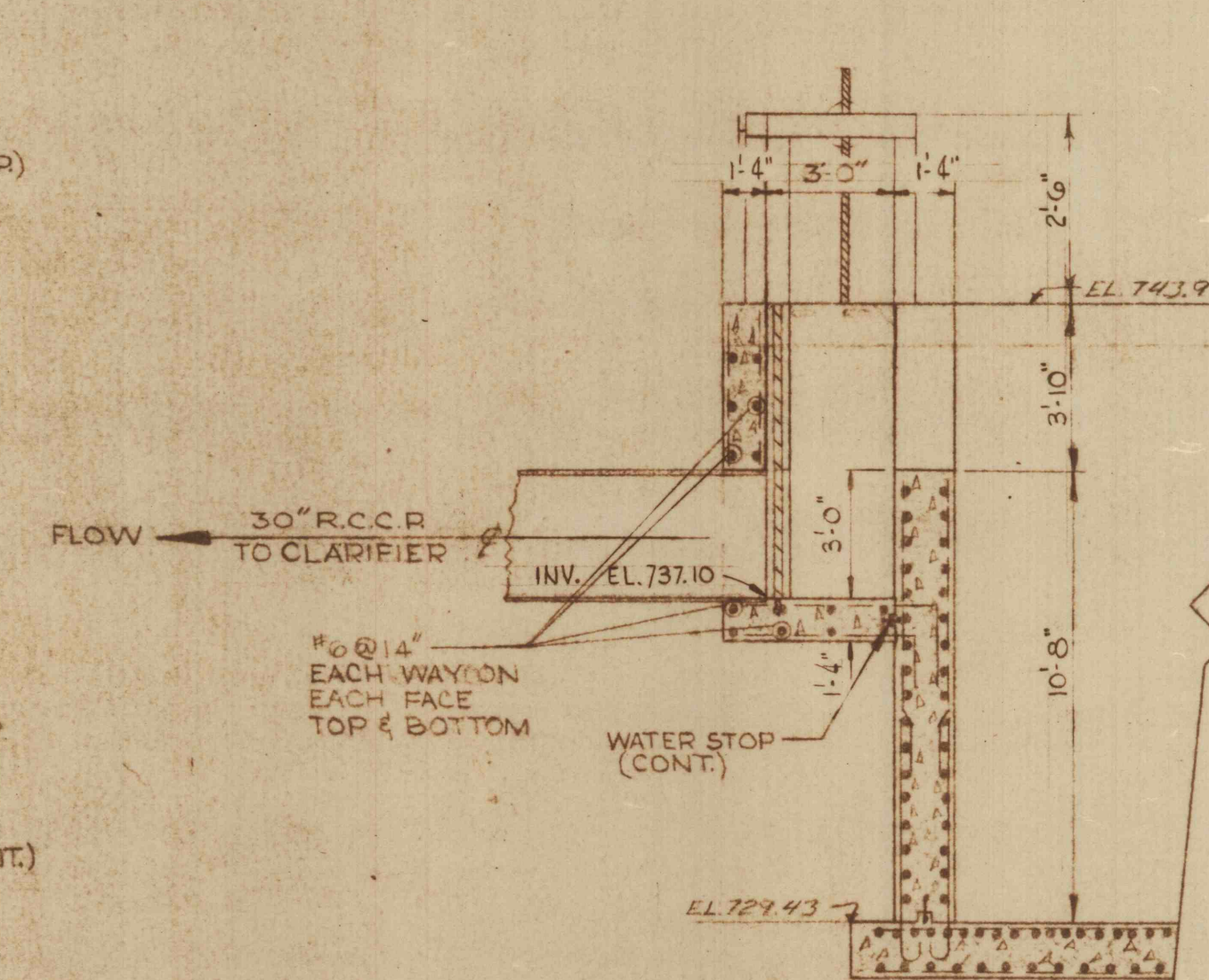
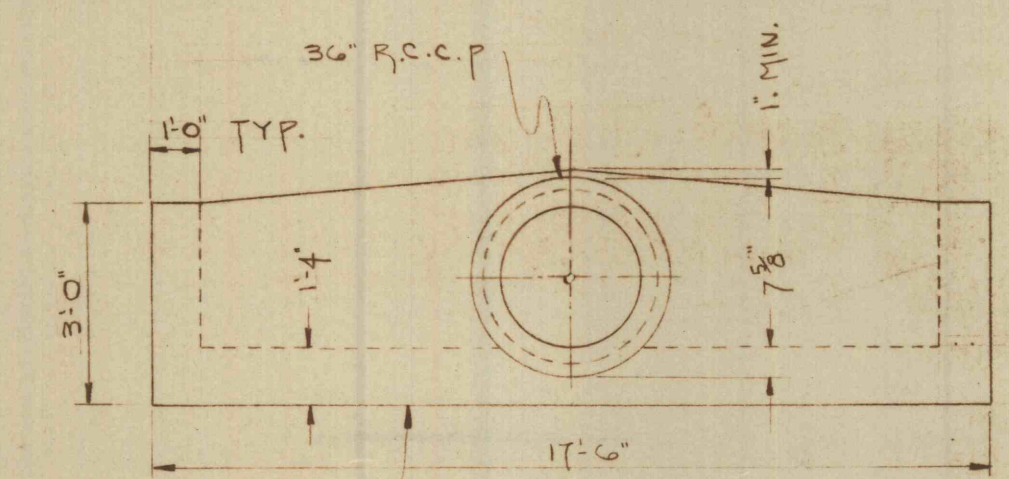


SECTION A-A
SCALE: 1/4"=1'

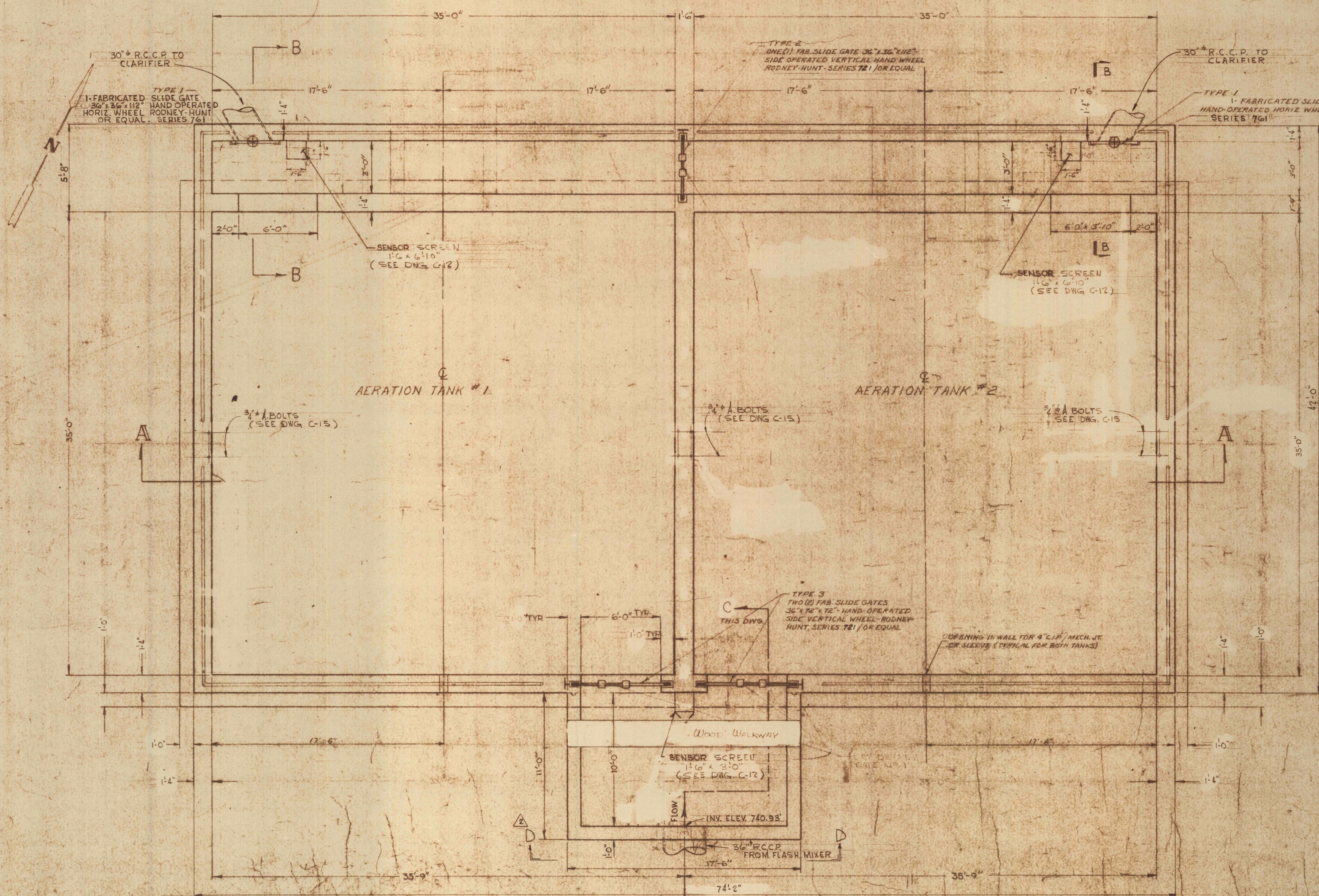


SECTION B-B
SCALE: 1/4"=1'

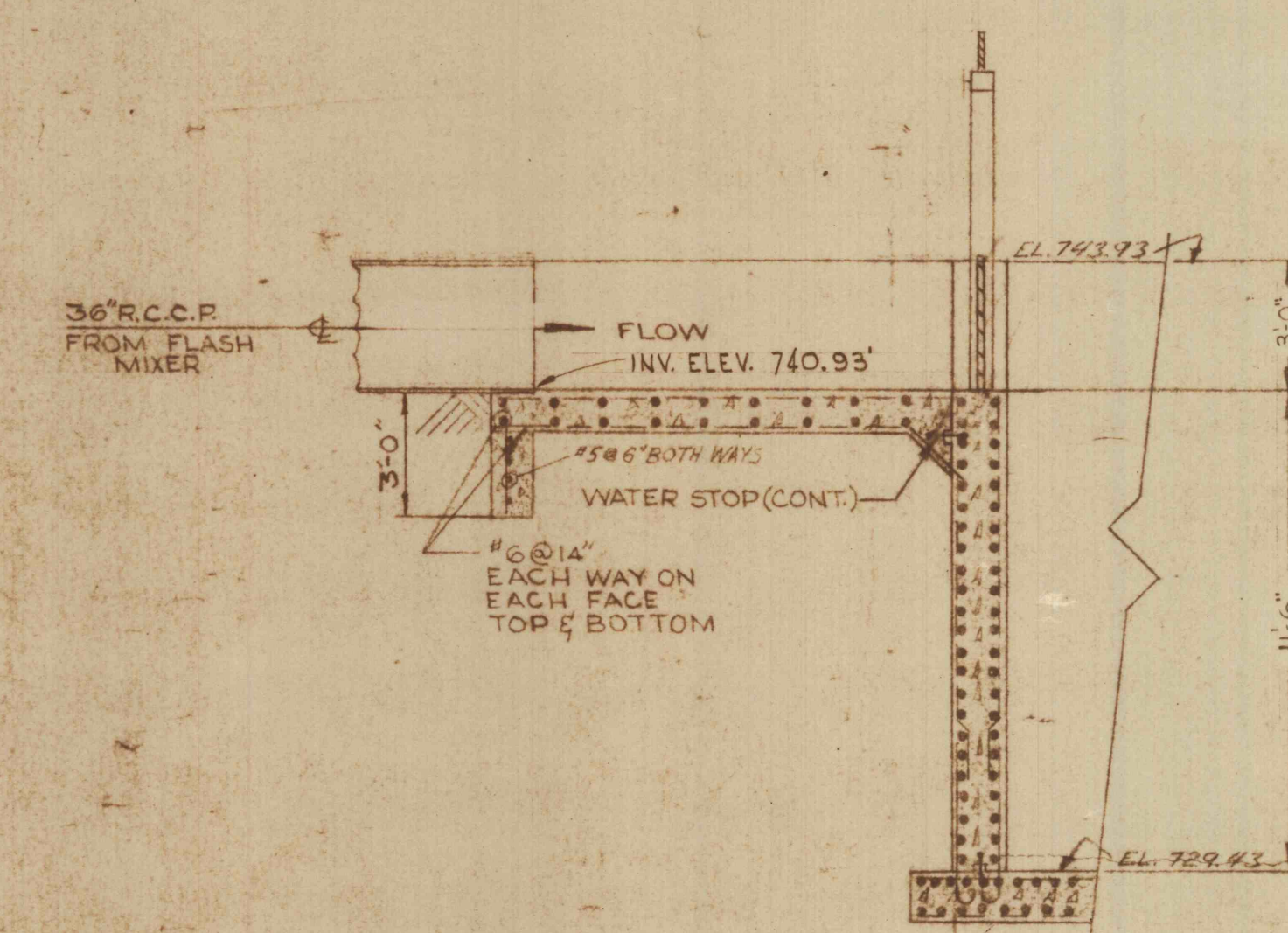


SECTION D-D
SCALE: 1/4"=1'

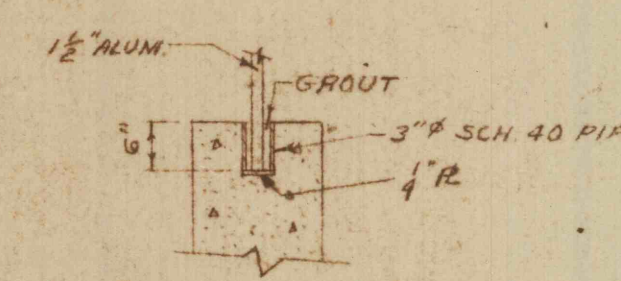
NOTE:
SONOTUBES PLACED IN
FIELD FOR SUPPORT OF
BOTTOM SLAB



PLAN (SEE DWG. C-10 & C-11)
SCALE: 1/4"=1'



SECTION C-C
SCALE: 1/4"=1'



DETAIL 'A'
SCALE: 1/2"=1'-0"

GENERAL NOTES

1. ALL CONSTRUCTION JOINTS BELOW WATER LEVEL TO HAVE 9" WATER STOP CONTINUOUS.
2. REFER TO DWG. N-2-C-5 FOR MECHANICAL DETAILS.
3. SUB-SOIL MUST BE UNIFORMLY WELL COMPACTED. A 6" BASE COURSE OF WELL COMPACTED CRUSHED STONE OR GRAVEL MUST BE PROVIDED BEFORE THE SLAB IS POURED.
4. ALL PIPES THRU WALLS OR SLAB BELOW WATERLEVEL SHALL HAVE MECH. JT. OR SLEEVE.

2. F.S. 1-23-71	ADDED SECTION D-D	
1	9-25-70 REVISED SECTION B-B & REMOVED A-BOLTS	P.B.
REVISIONS		
AERATION TANKS NO. 1 & 2 - STRUCTURAL		
CONSTRUCTION OF TREATMENT FACILITIES FOR ACID MINE DRAINAGE		
RAUSCH CREEK WATERSHED		
SCHUYLKILL COUNTY, PENNSYLVANIA		
ANTHRACITE RESEARCH & DEVELOPMENT CO. INC.		
CONSULTING ENGINEERS		
POTTSVILLE, PENNSYLVANIA TAMAGUA		
JOB NO. 6-23-65		
DATE: NOV. 1965		
SCALE: AS SHOWN		
DRAWN: J. LEVALL		
APPROVED: T.H. RIE		
DRAWING NO. C-14		

