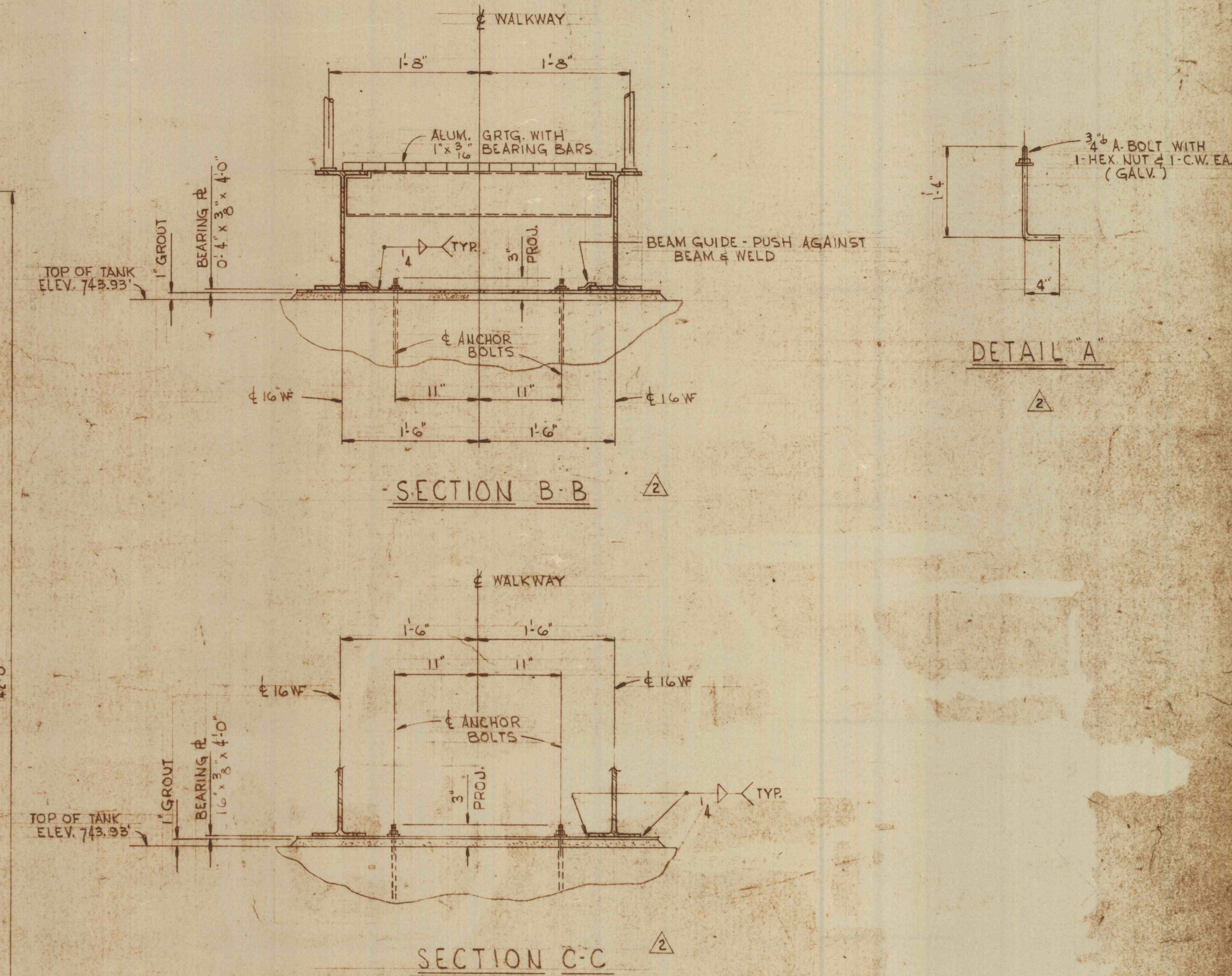
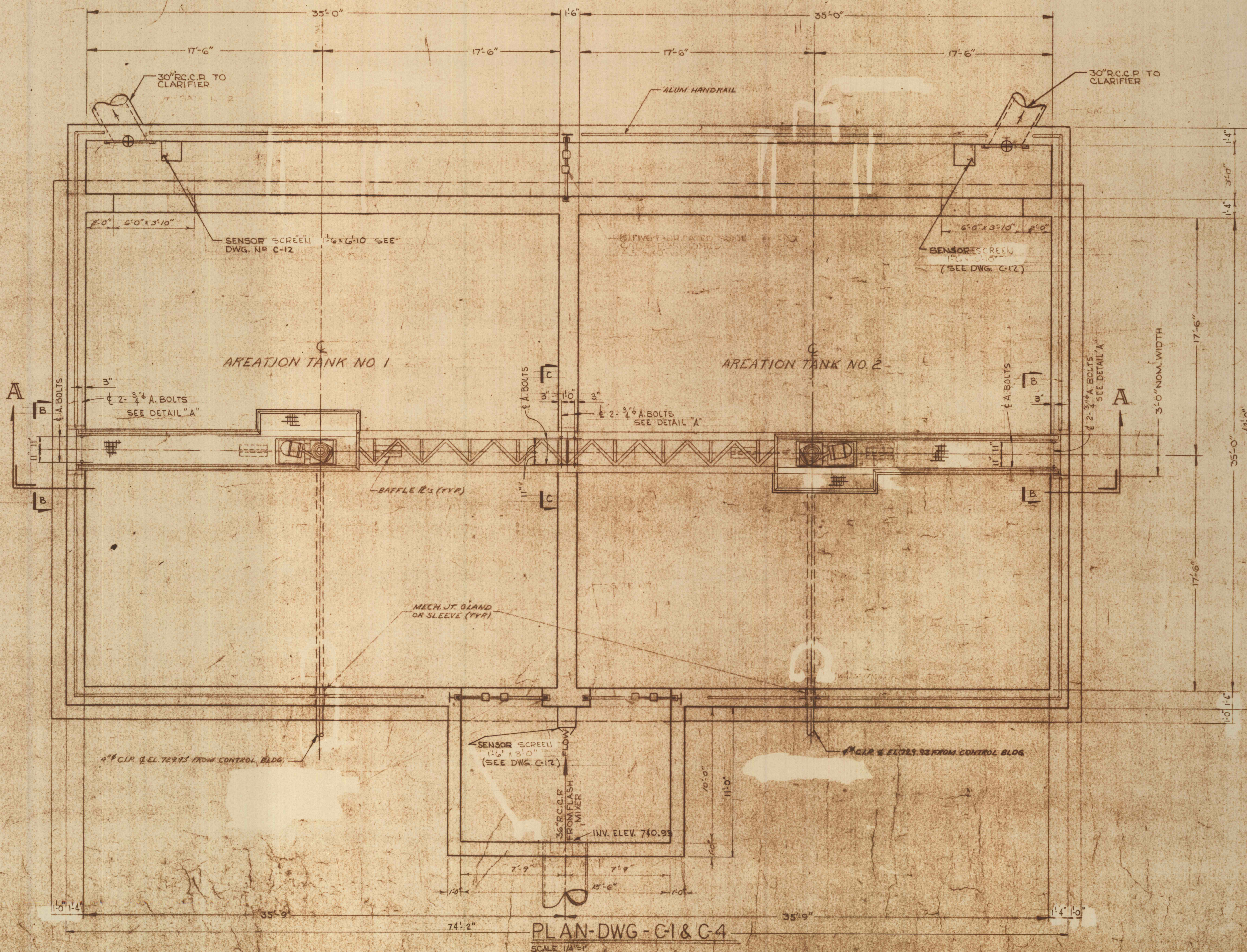


GENERAL NOTES

- 1 ALL CONSTRUCTION JOINTS BELOW WATER LEVEL TO HAVE 9\"/>
- 2 ALL PIPES THRU WALLS OR CEILING BELOW WATER LEVEL SHALL HAVE MECH. JT OR SLICVE.
- 3 REFER TO DWG. C-14 FOR STRUCTURAL DETAILS.



2 11-13-70 REMOVED DETAIL C & ADDED SECT'S B-B, C-C, ELEV. E-E & DETAIL A & D.	
1 4-12-70 DELETED DETAIL D. SEE	
REVISIONS	
AREATION TANKS NO. 1 & 2 - MECHANICAL	
CONSTRUCTION OF TREATMENT FACILITIES FOR ACID MINE DRAINAGE	
RAUSCH CREEK WATERSHED	
SCHUYLKILL COUNTY, PENNSYLVANIA	
JOB NO. 68-05 DATE: NOV. 1969 SCALE: AS SHOWN DRAWN: E.D. BISHOP APPROVED: T.S.	DRAWING NO. C-15
ANTHRACITE RESEARCH & DEVELOPMENT CO. INC. consulting engineers POTTSVILLE, PENNSYLVANIA	