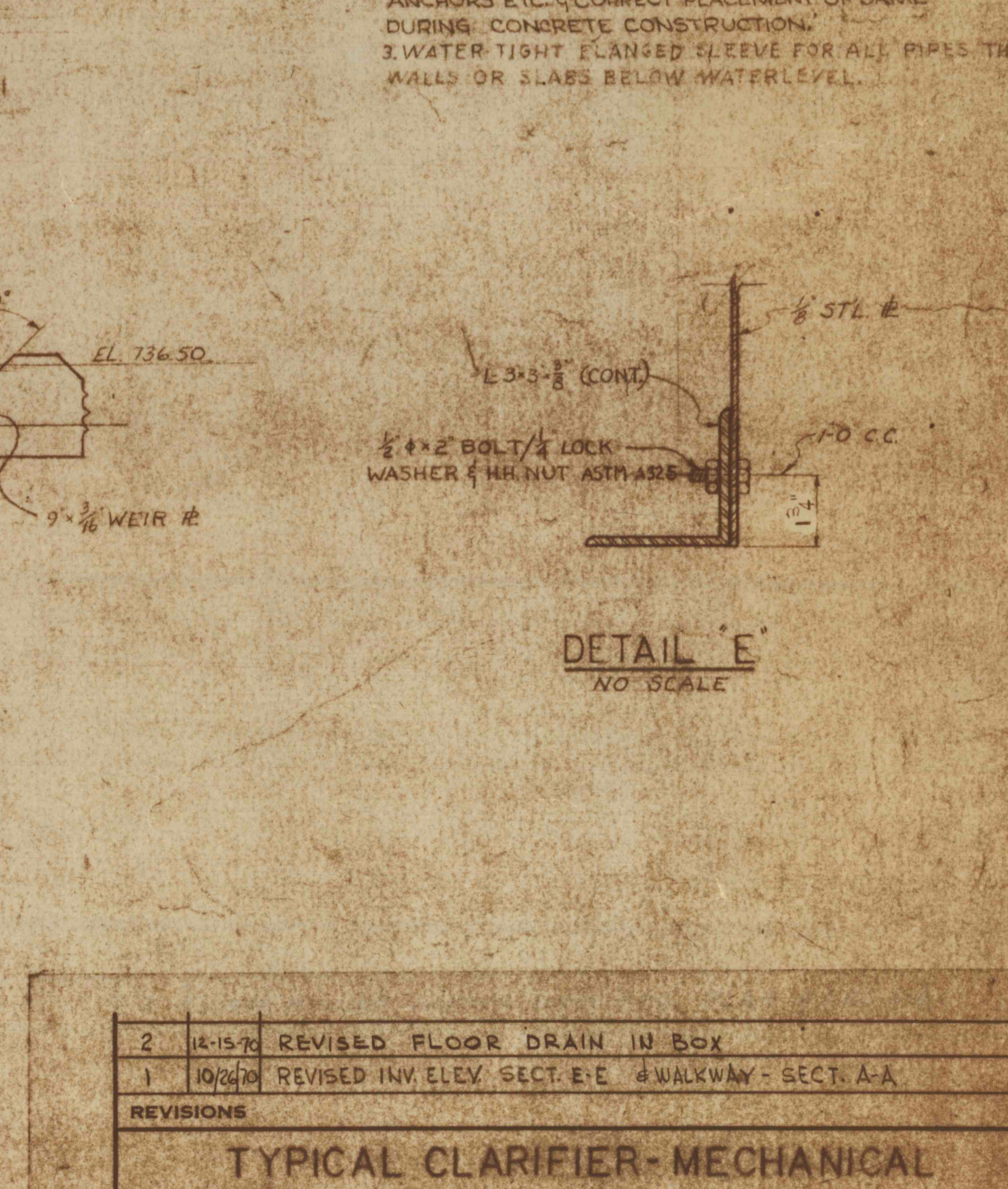
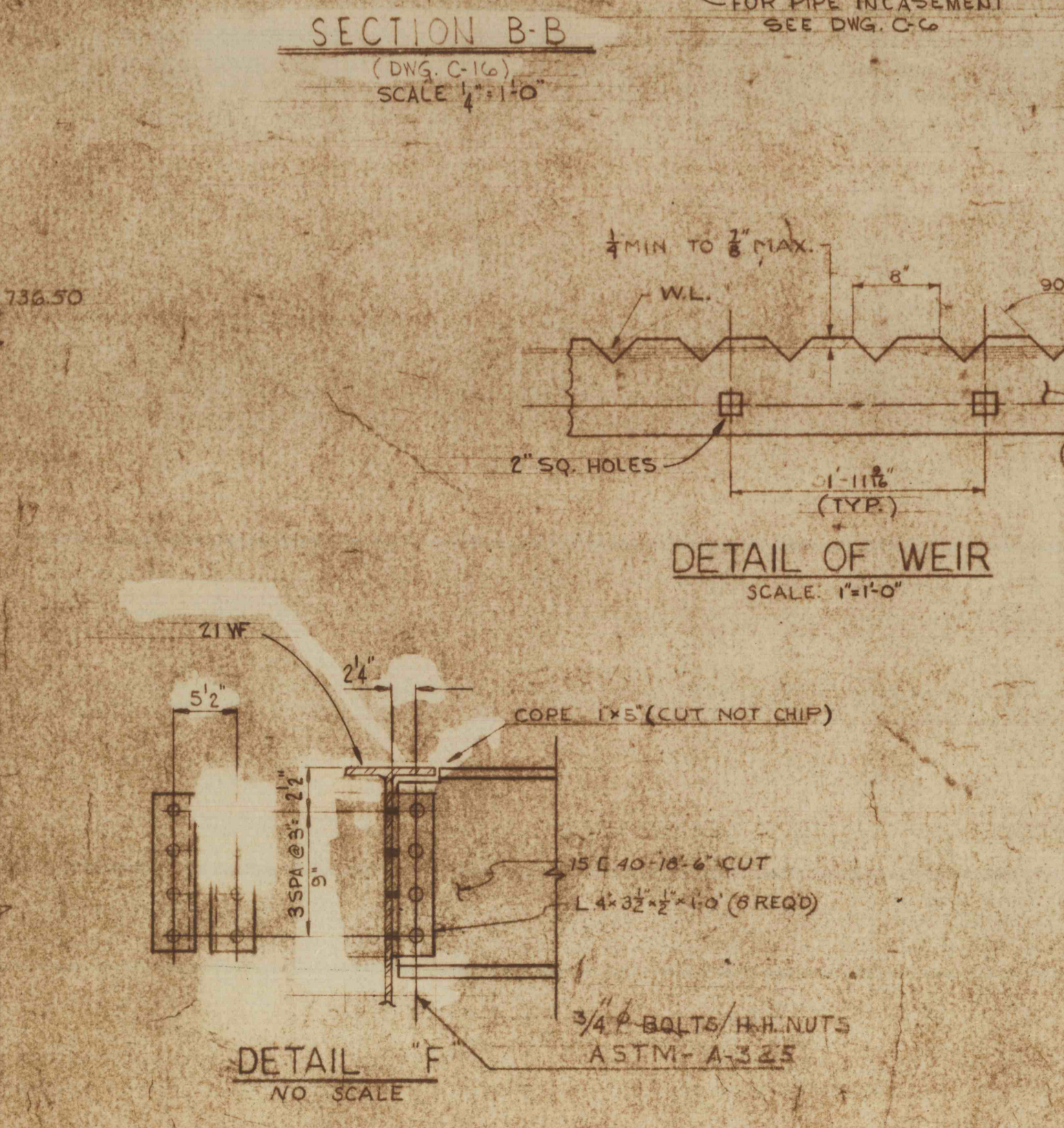
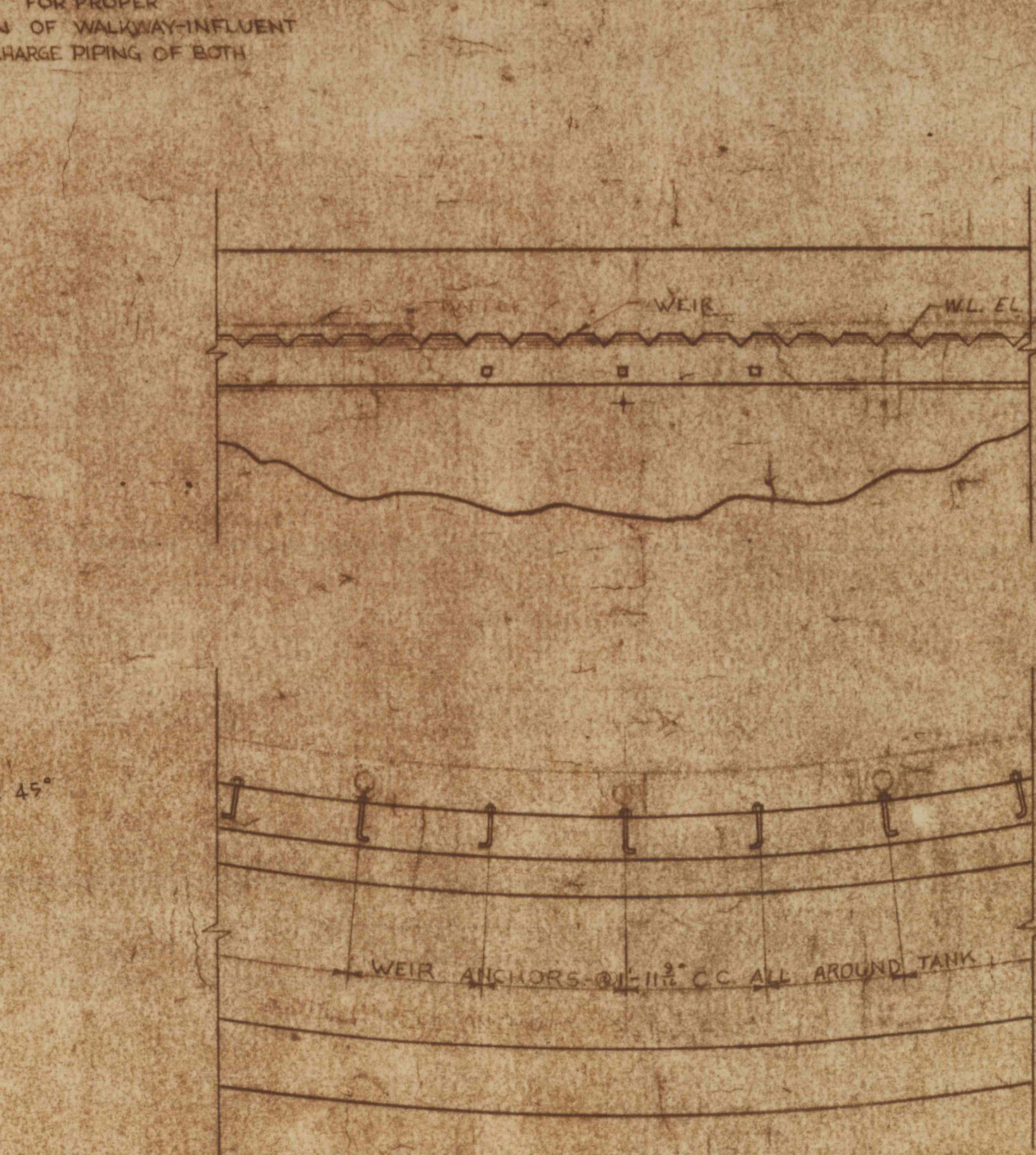
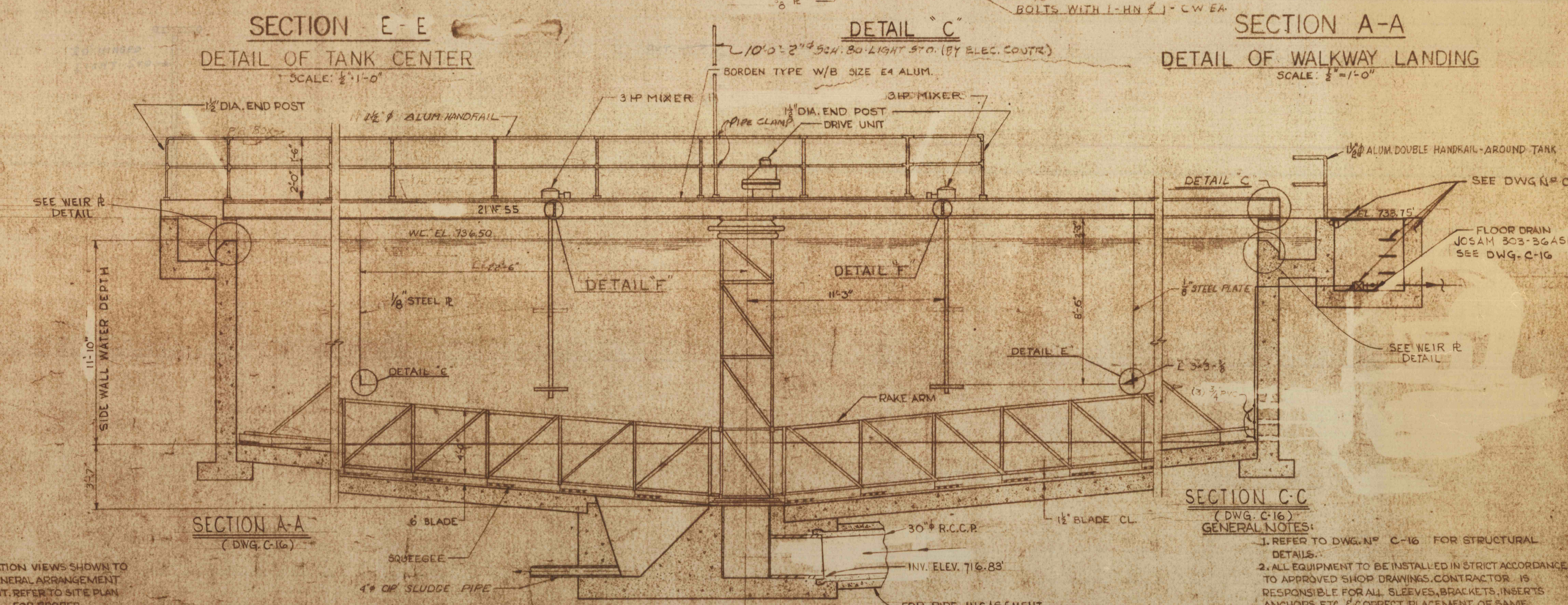
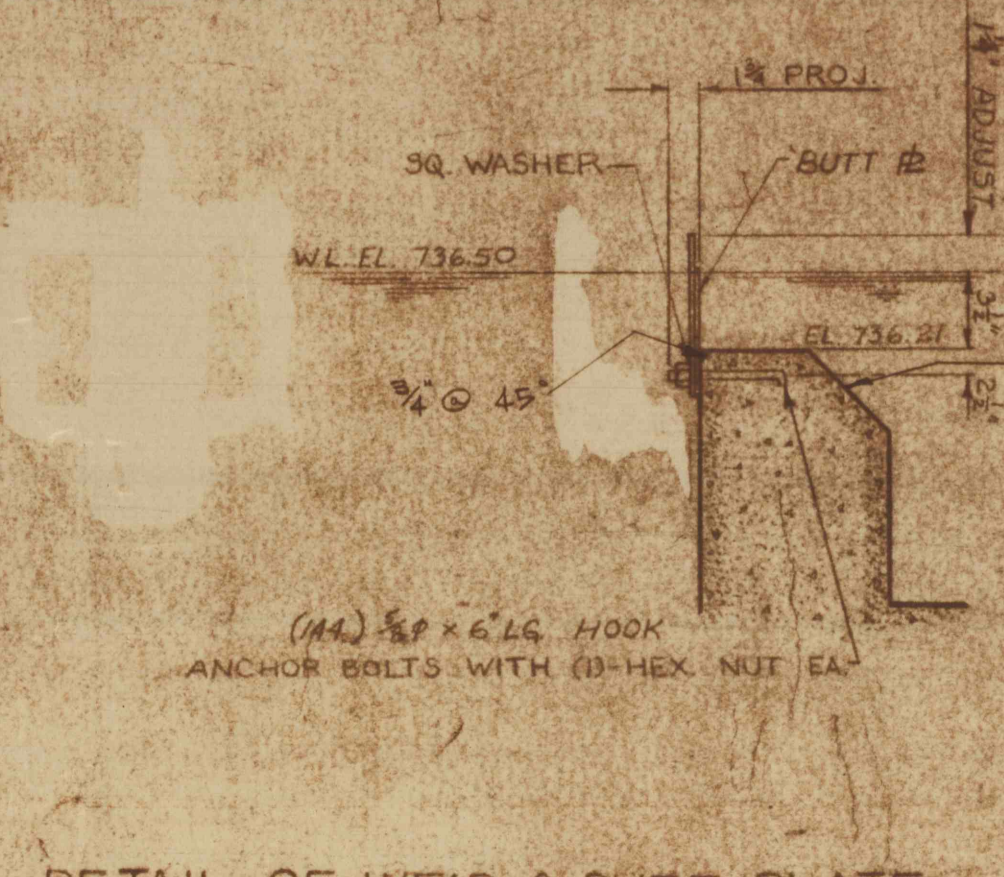
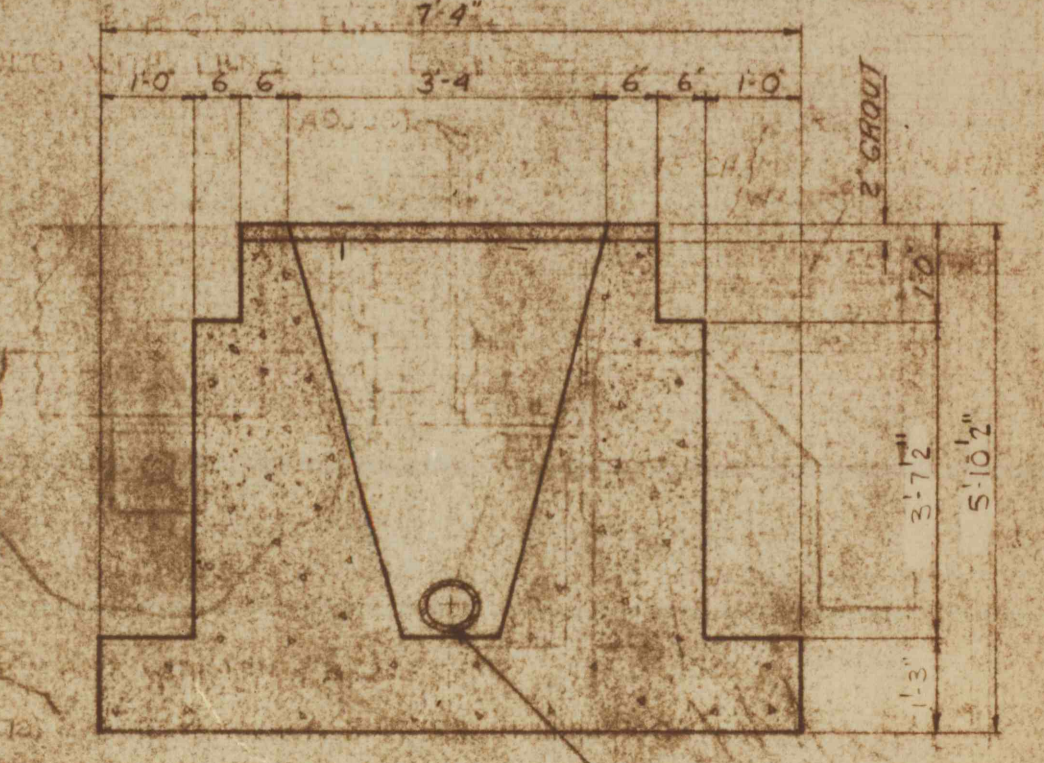


NOTE: PLAN & ELEVATION VIEWS SHOWN TO INDICATE GENERAL ARRANGEMENT OF EQUIPMENT. REFER TO SITE PLAN DWG. NO. C-1 FOR PROPER ORIENTATION OF WALKWAY-INFLUENT PIPING & DISCHARGE TYPING OF BOTH CLARIFIERS.

NOTE: PLAN VIEW OF MOST CLARIFIER SIMILAR TO NO. 2 CLARIFIER SIMILAR BUT OPPOSITE HAND REFER TO DWG. C-1 (PLOT PLAN) FOR CORRECT POSITION.



PLAN
SCALE: 1/4"=1'-0"
DWG. C-1 C-2 & C-5



TYPICAL DETAIL OF WEIR ANCHORS
SCALE: 1"=1'-0"

REVISIONS	
2	10-15-58 REVISED FLOOR DRAIN IN BOX
1	10-10-58 REVISED INV. ELEV. SECT. E-E & WALKWAY - SECT. A-A

TYPICAL CLARIFIER - MECHANICAL	
CONSTRUCTION OF TREATMENT FACILITIES FOR ACID MINE DRAINAGE	JOB NO. 66008
RAUSCH CREEK WATERSHED	DATE: NOV. 1957
SCHUYLKILL COUNTY, PENNSYLVANIA	SCALE: AS SHOWN
RESEARCH & DEVELOPMENT CO., INC.	DRAWN BY: J. LEVING
CONSULTING ENGINEERS	APPROVED BY: THOMAS W. RIFE
POTTSVILLE, PENNSYLVANIA	TAMAGUA

