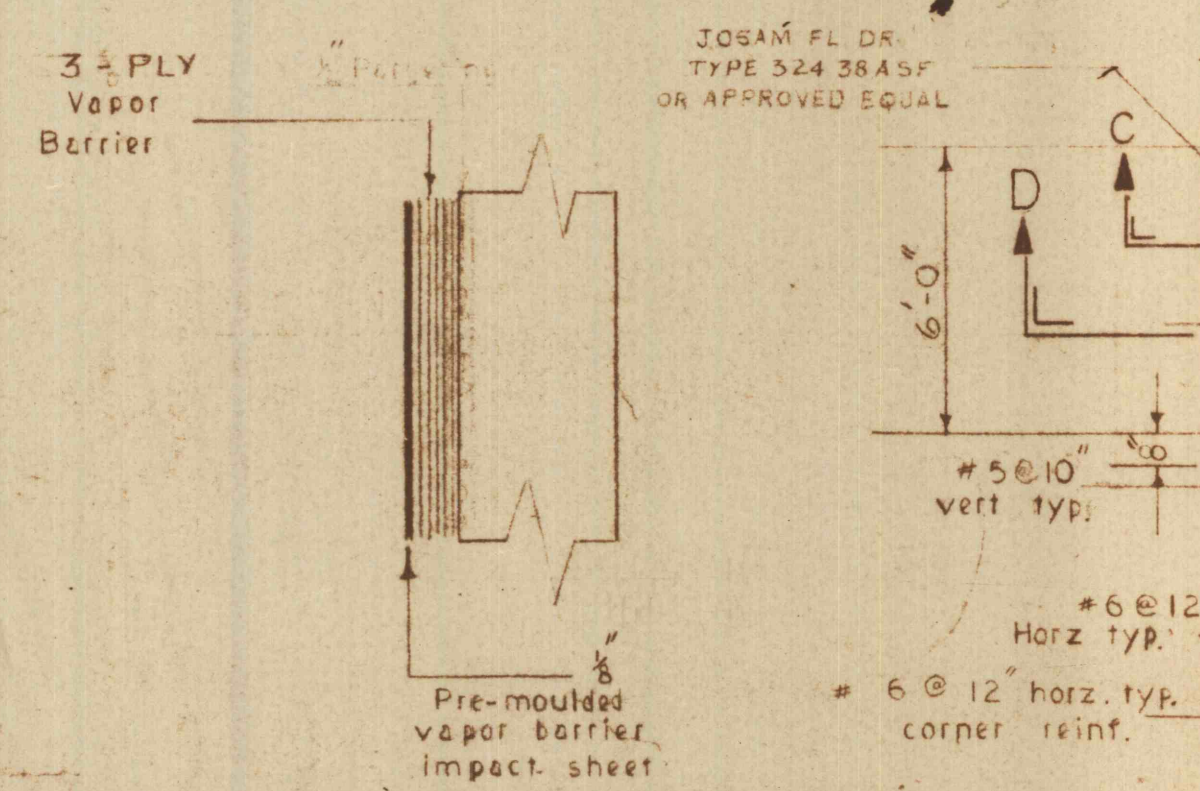
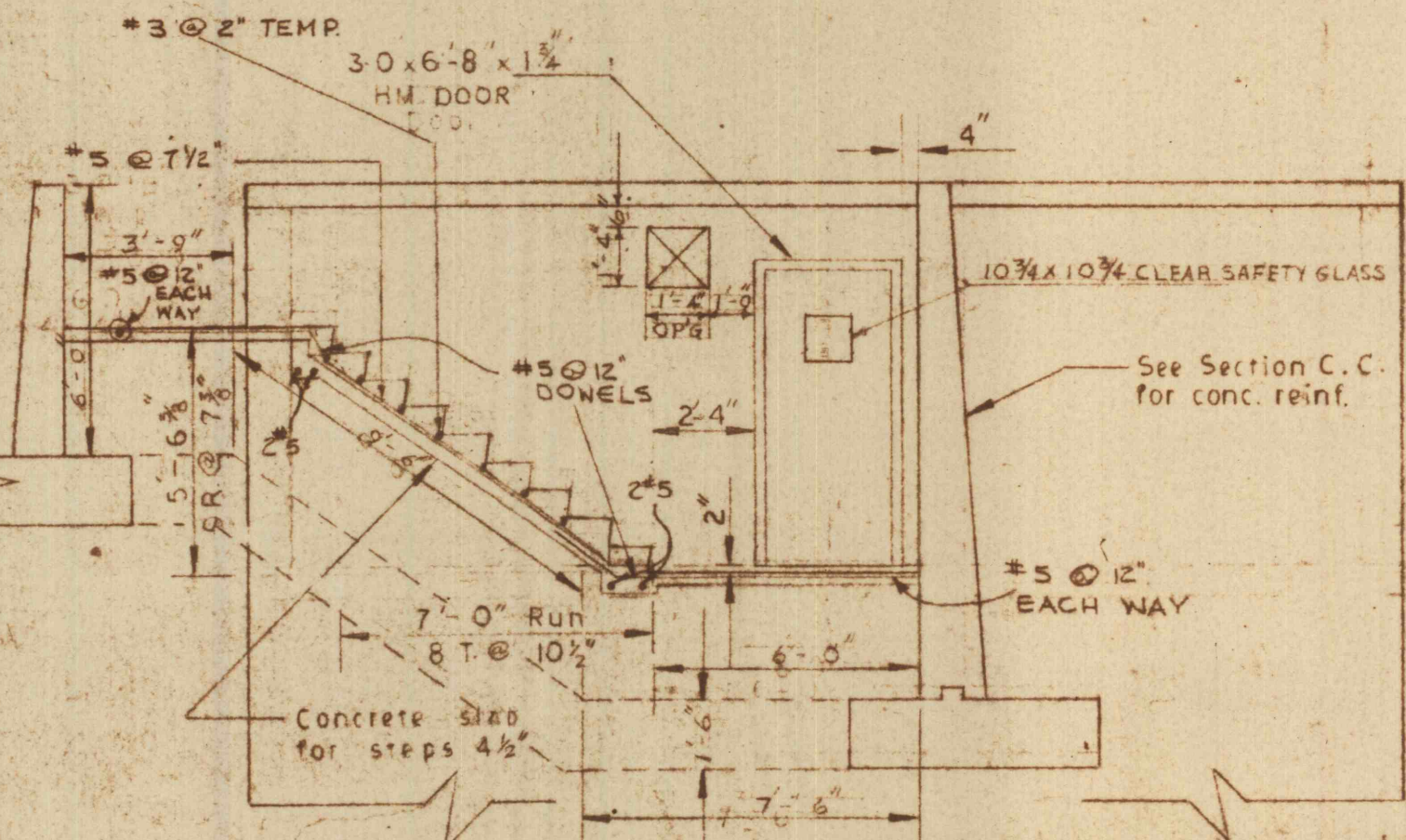


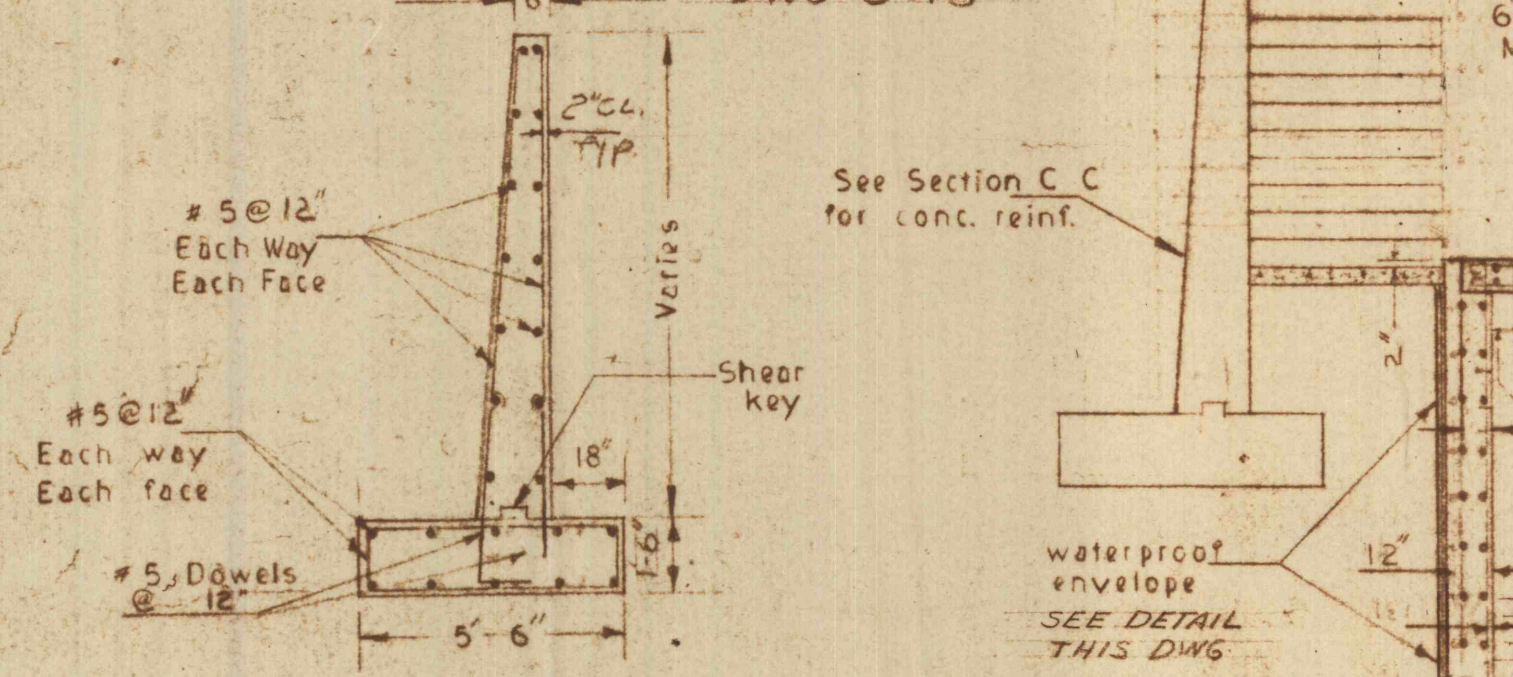
DETAIL F
SHOWING CONCRETE AT CENTER OF TANK.
SCALE: 1/4" = 1'-0"



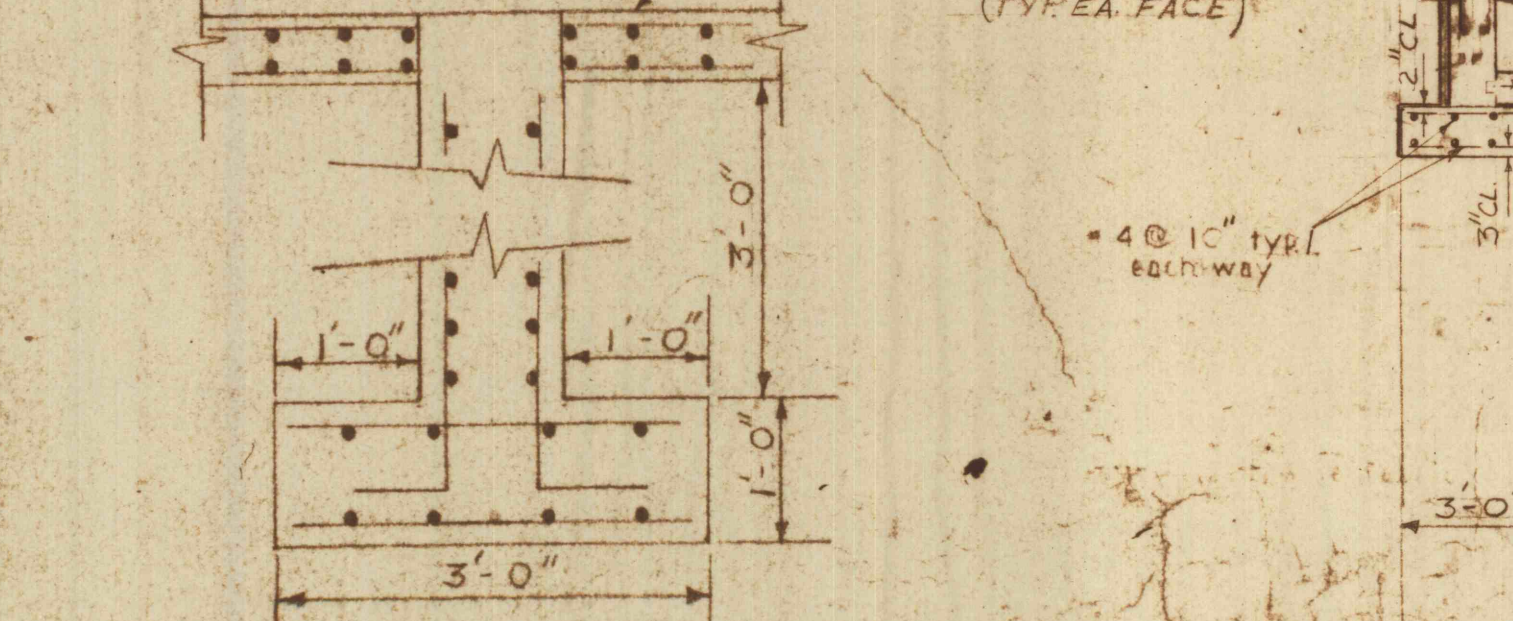
WATERPROOF ENVELOPE DETAIL
NO SCALE



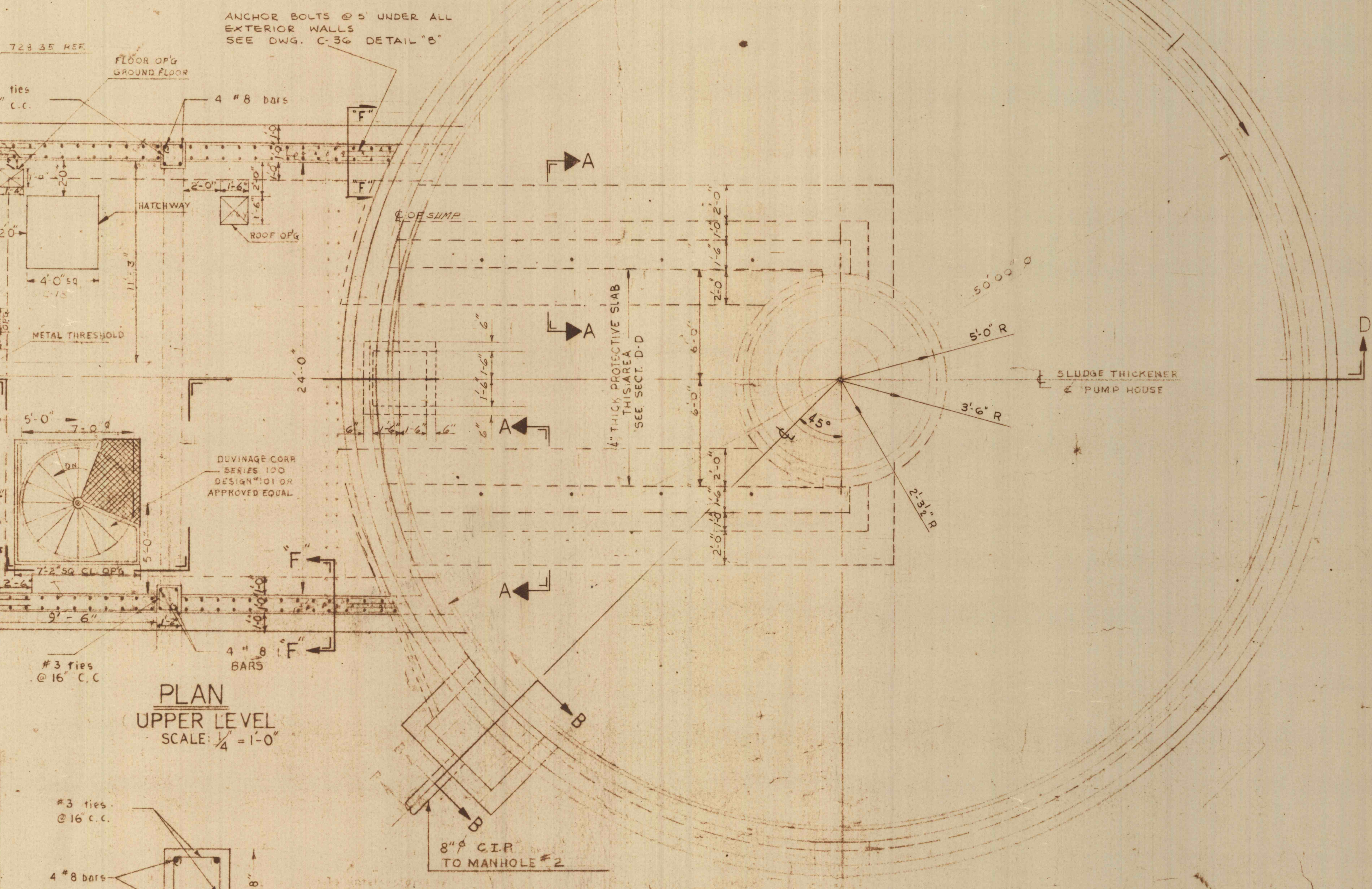
SECTION E-E
SCALE: 1/2" = 1'-0"
SEE REVISIONS DWG. C-13



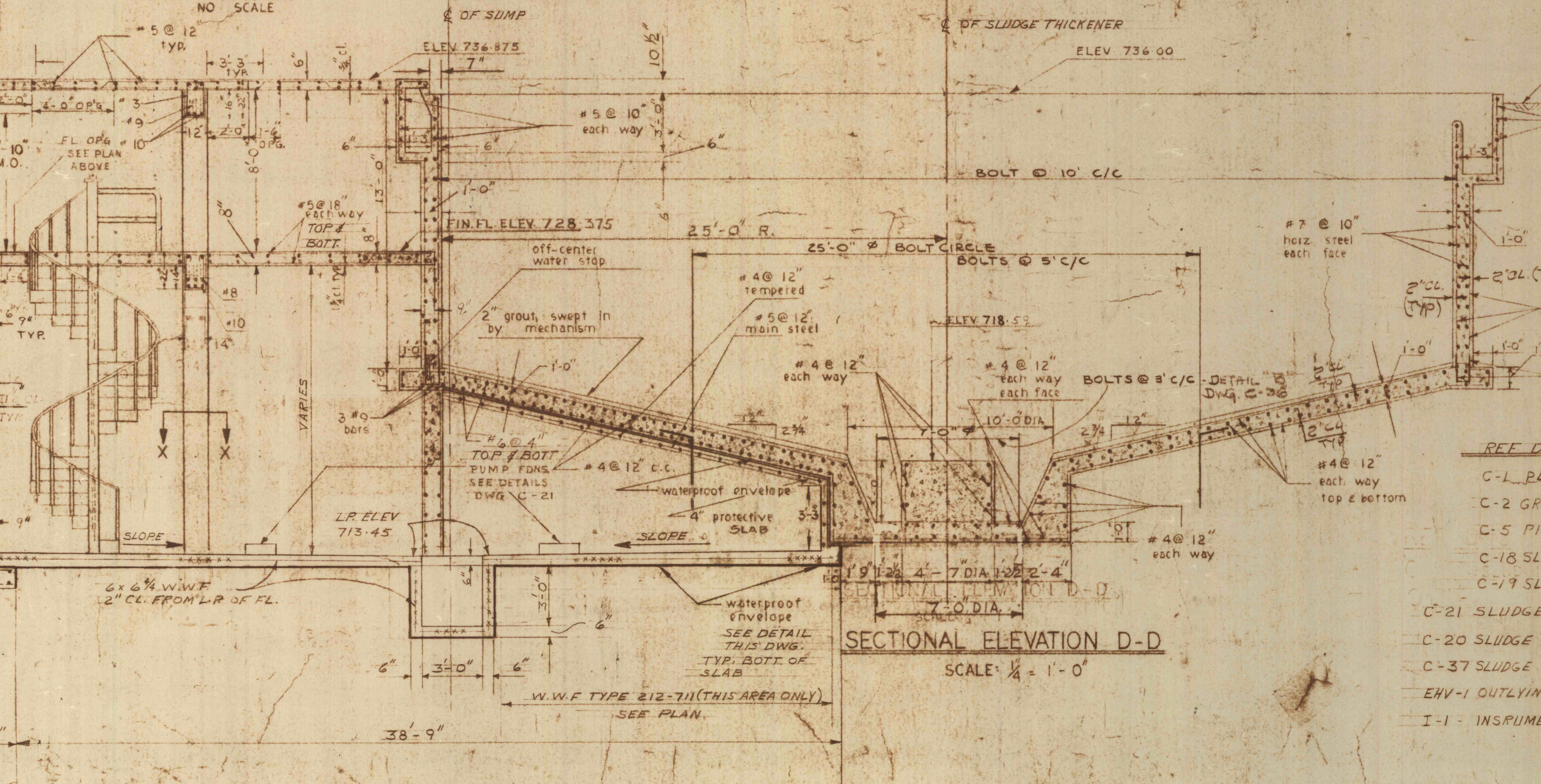
SECTION C-C
SCALE: 1/2" = 1'-0'



SECTION F-F (TYP)

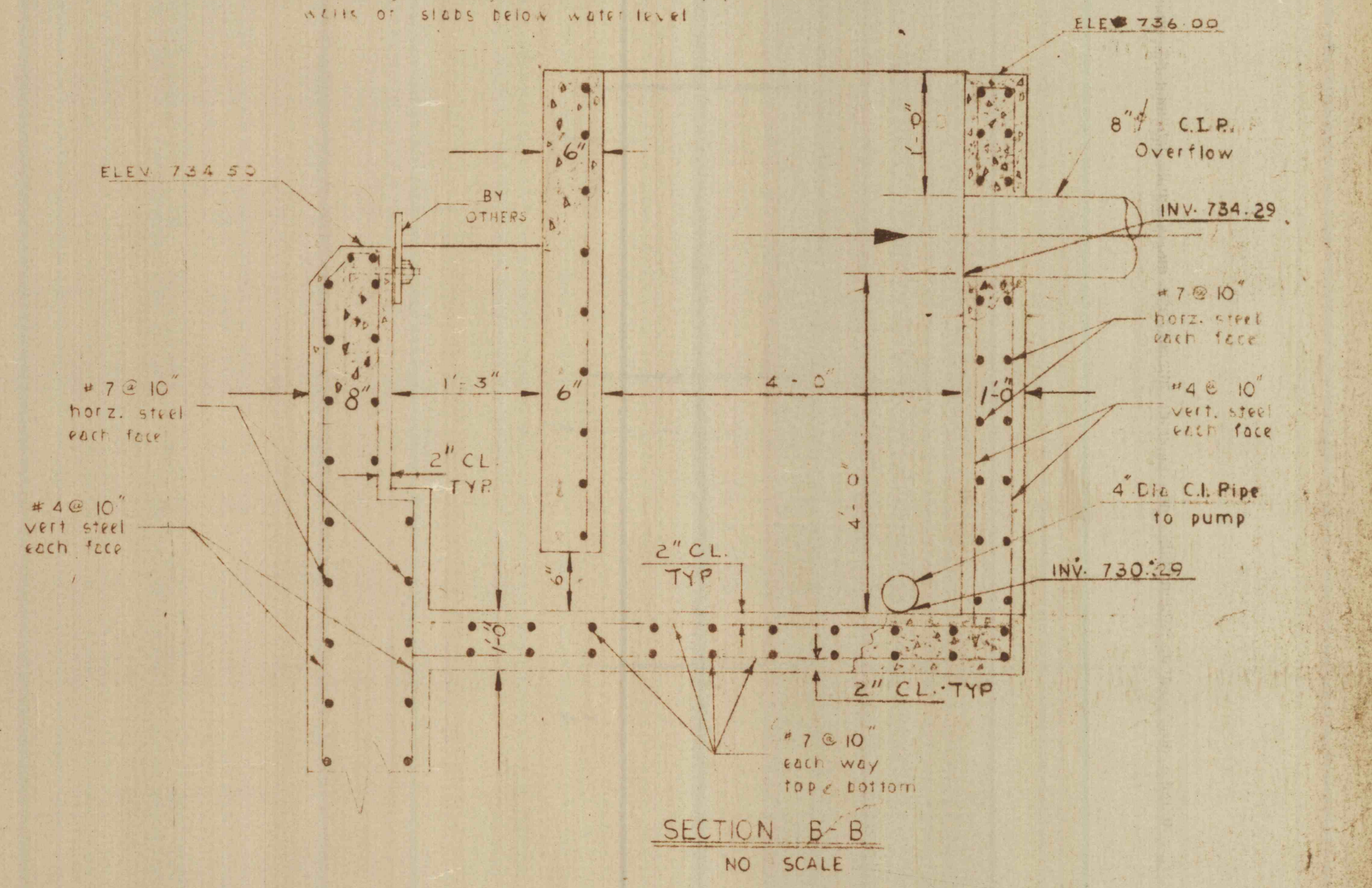


PLAN UPPER LEVEL
SCALE: 1/4" = 1'-0'

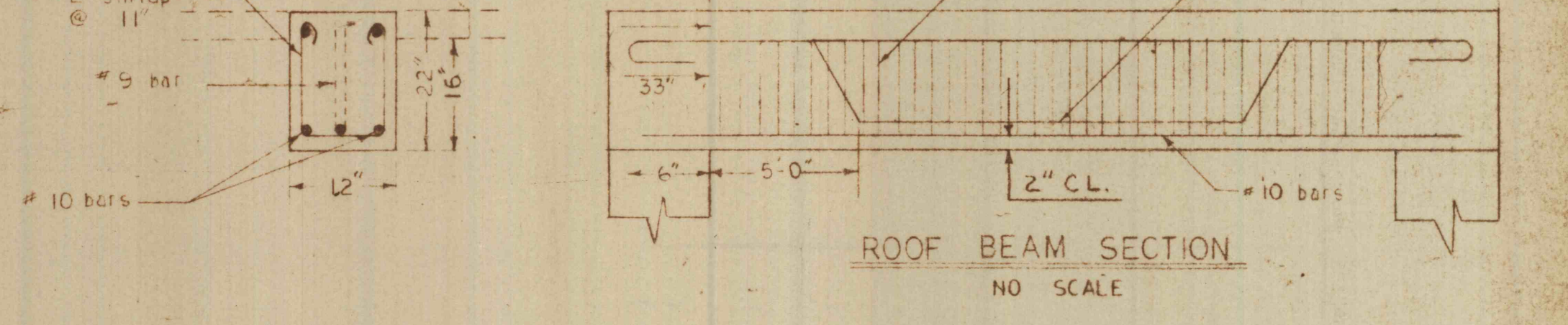


SECTIONAL ELEVATION D-D
SCALE: 1/4" = 1'-0'

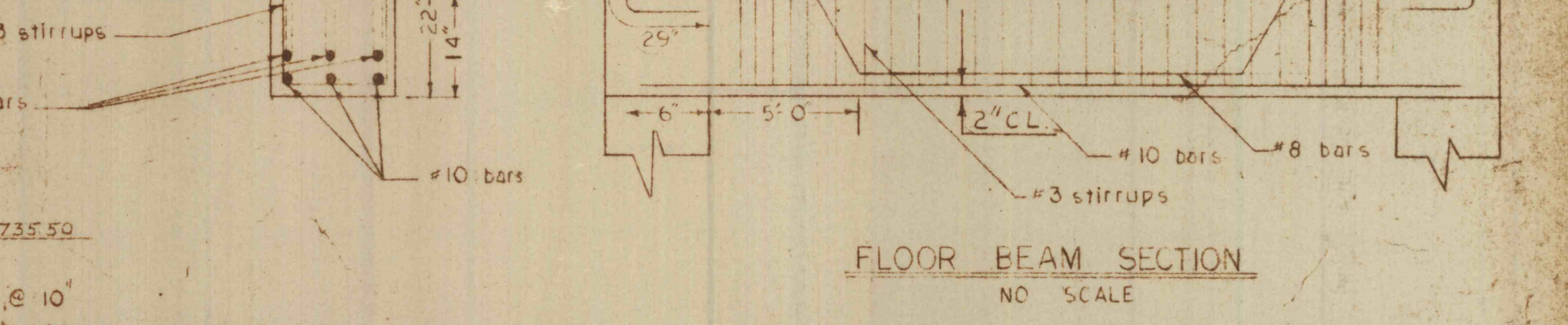
- GENERAL NOTE**
1. Sub soil must be uniformly well compacted.
 2. All equipment to be installed in strict accordance with approved blue prints.
 3. Contractor is responsible for all sleeves, brackets, inserts, anchors etc. correct placement of same during concrete construction.
 4. Air-tight flange sleeves for all pipes thru walls or slabs below water level.
 5. ALL REINFORCING STEEL TO BE SUPPORTED BY METAL CHAIRS OR SUPPLEMENTS & TO BE INSPECTED BY FIELD ENG. PRIOR TO INSPECTION BEFORE CONCRETE IS PLACED.
 6. CONTRACTOR MUST NOT BACKFILL AGAINST BASEMENT WALLS BEFORE FLOOR & BASEMENT SLAB ARE INSTALLED.
 7. PROVIDE WATERPROOFING ENVELOPE FOR EXTERIOR FACED BY BASEMENT WALL & SLAB.



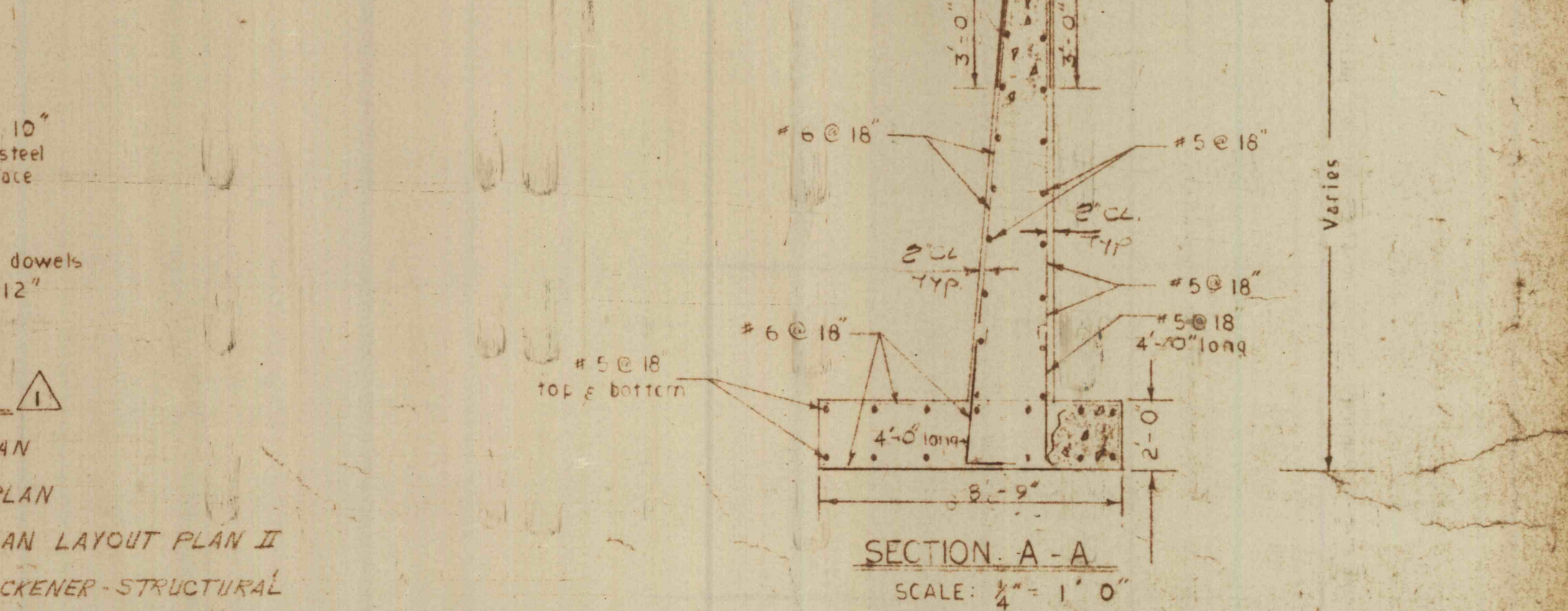
SECTION B-B
NO SCALE



ROOF BEAM SECTION
NO SCALE



FLOOR BEAM SECTION
NO SCALE



SECTION A-A
SCALE: 1/4" = 1'-0'

- REF DWG'S**
- C-1 PLOT PLAN
 - C-2 GRADING PLAN
 - C-5 PIPING PLAN LAYOUT PLAN II
 - C-18 SLUDGE THICKENER - STRUCTURAL
 - C-19 SLUDGE THICKENER - MECHANICAL
 - C-21 SLUDGE HOLDING PIT - PUMP ROOM DETAILS
 - C-20 SLUDGE THICKENER - PUMP ROOM - MECHANICAL
 - C-37 SLUDGE THICKENER - PUMP HOUSE SECTIONS
 - EHV-1 OUTLYING STRUCTURES EHV PLAN
 - I-1 INSTRUMENTATION SITE PLAN

REVISIONS

1	ADDED REFERENCE DRAWINGS
---	--------------------------

SLUDGE THICKENER - STRUCTURAL

CONSTRUCTION OF TREATMENT FACILITIES FOR ACID MINE DRAINAGE
RAUSCH CREEK WATERSHED
 SCHUYLKILL COUNTY PENNSYLVANIA

JOB NO: 6805
 DATE: APR. 1970
 SCALE: NOTED
 DRAWN: G.C.P.
 APPROVED: T.H. ROJUL

ANTHRACITE
 RESEARCH & DEVELOPMENT CO. INC.
 consulting engineers
 POTTSVILLE, PENNSYLVANIA TAMAGUA

C-18

