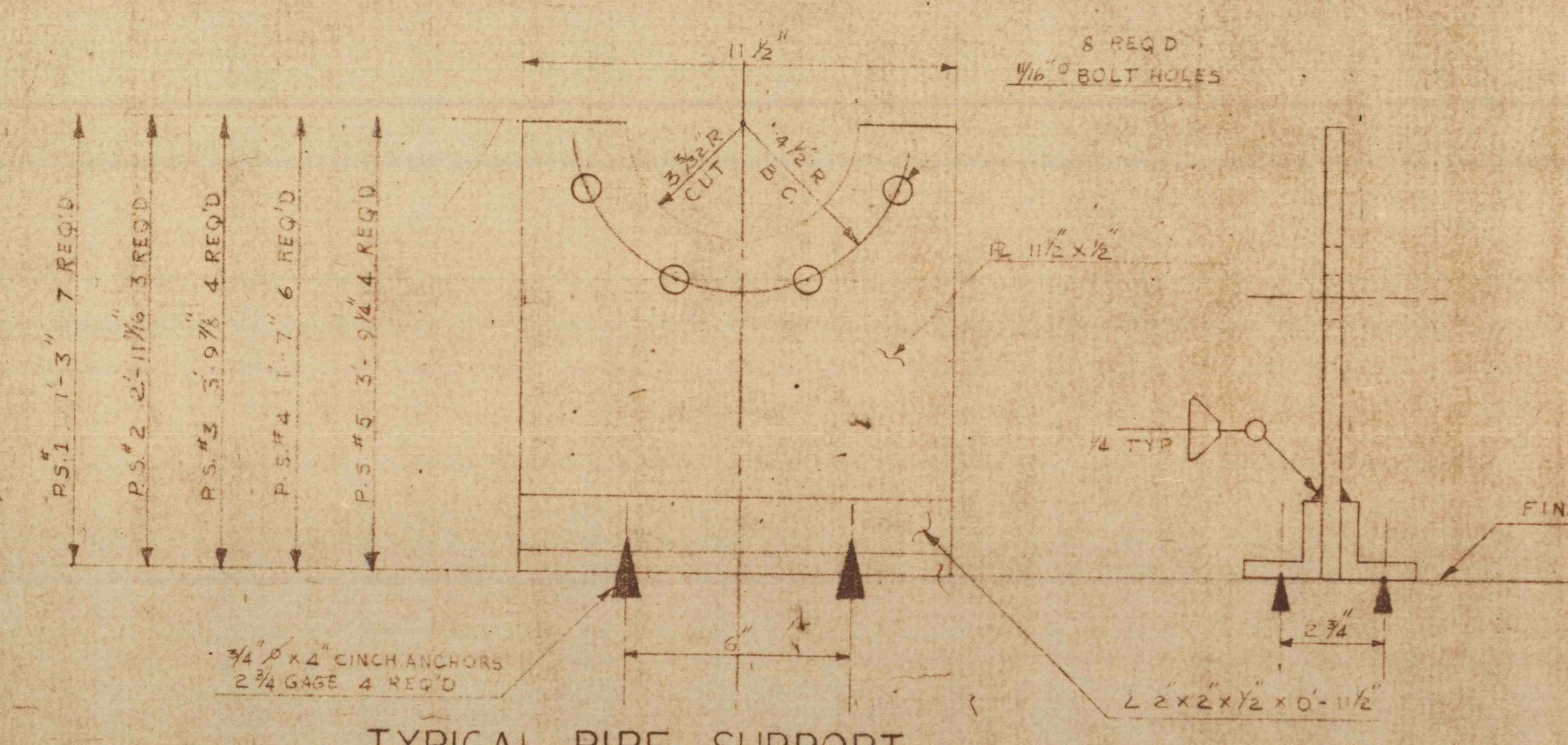


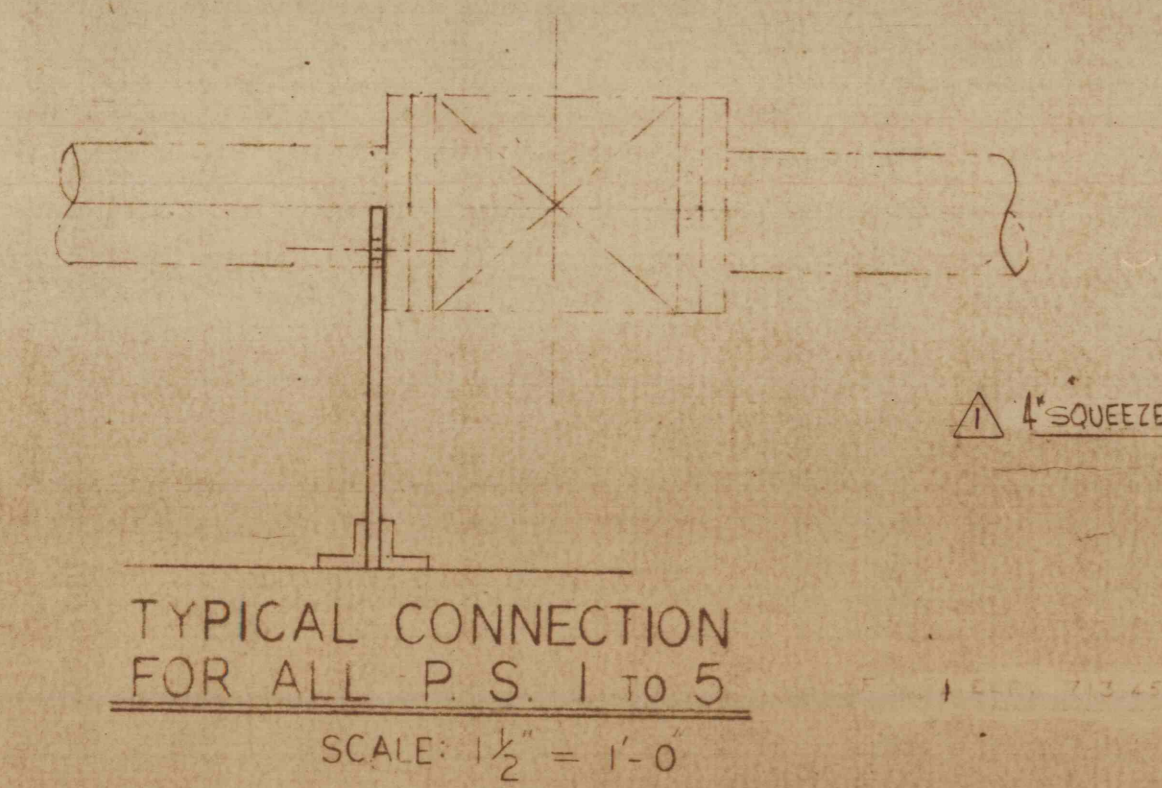
PLAN - PUMP HOUSE - DWG C-1, C-2 & C-5  
BASEMENT  
SCALE: 1/4" = 1'-0"

PLAN - PUMP HOUSE  
GROUND FLOOR  
SCALE: 1/4" = 1'-0"

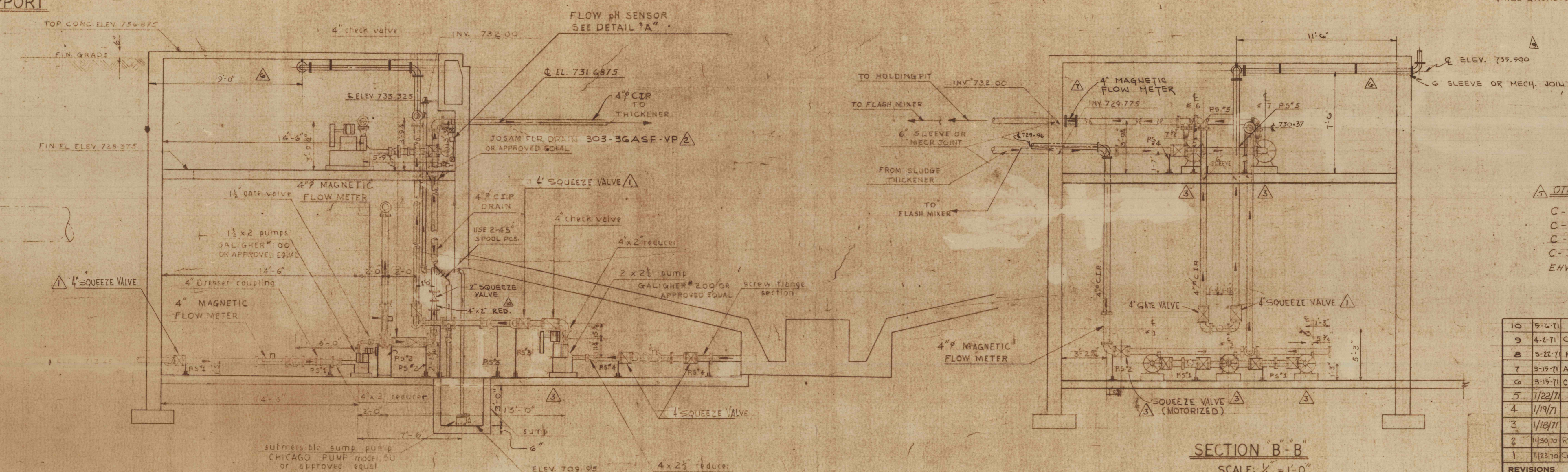


TYPICAL PIPE SUPPORT

- GENERAL NOTES:**
- 1 ALL PIPING TO BE CIP ASA CLASS 125 UNLESS OTHERWISE NOTED
  - 2 ALL FLANGES TO BE CIP ASA B16.1 CLASS 125 UNLESS OTHERWISE NOTED
  - 3 ALL FITTINGS TO BE CIP ASA B16.1 CLASS 125 UNLESS OTHERWISE NOTED
  - 4 ALL GASKETS TO BE 3/16 THICK



TYPICAL CONNECTION FOR ALL P.S. 1 TO 5  
SCALE: 1/2" = 1'-0"



SECTION A-A  
SCALE: 1/4" = 1'-0"

SECTION B-B  
SCALE: 1/4" = 1'-0"

- OTHER REF DWGS:**
- C-21 SLUDGE HOLDING PIT - PUMP FDN. DETAILS
  - C-18 SLUDGE THICKENER - STRUCTURAL
  - C-18 SLUDGE THICKENER - STRUCTURAL - PUMP HOUSE SECT.
  - ENV-1 OUTLYING STRUCTURES ENV PLAN

NO.	DATE	DESCRIPTION
10	5-14-71	ADDED 2" SQUEEZE VALVE - CUB. LINE FROM 4" TO 5" (F.D.S.)
9	4-2-71	CHANGED ELEV. OF 4" PIPE TO 739.500 (F.D.S.)
8	3-27-71	RELOCATED 1" SCH. 40 TO MAIN DRAIN (F.D.S.)
7	3-19-71	ADDED 4" MAGNETIC FLOW METER (F.D.S.)
6	3-19-71	CHANGED LOCATION OF 4" SLUDGE LINE TO TRUCK (F.D.S.)
5	1/23/71	ADDED REFERENCE DRAWINGS
4	1/19/71	REV. PUMP PADS - DRAWN ACCORDING TO SCALE
3	1/18/71	REV. PUMP PADS - TO BE POURED AS INDICATED
2	1/13/71	REV. PUMP PADS AS IND. @ EL. 728.875
1	1/12/71	CHANGED 4" GATE VALVES TO 4" SQUEEZE VALVES & SLOPE BASEMENT FLR.

**REVISIONS**

**SLUDGE THICKENER - PUMP ROOM - MECH.**  
CONSTRUCTION OF TREATMENT FACILITIES FOR ACID MINE DRAINAGE  
RAUSCH CREEK WATERSHED  
SCHUYLK COUNTY - PENNSYLVANIA

ANTRACITE RESEARCH & DEVELOPMENT CO. INC.  
consulting engineers  
POTTSVILLE PENNSYLVANIA  
JOB NO: 6805  
DATE: NOV 1969  
SCALE: NOTED  
DRAWN: G.C.F.  
APPROVED: T.H. RYAN  
DRAWING NO: **C-20**