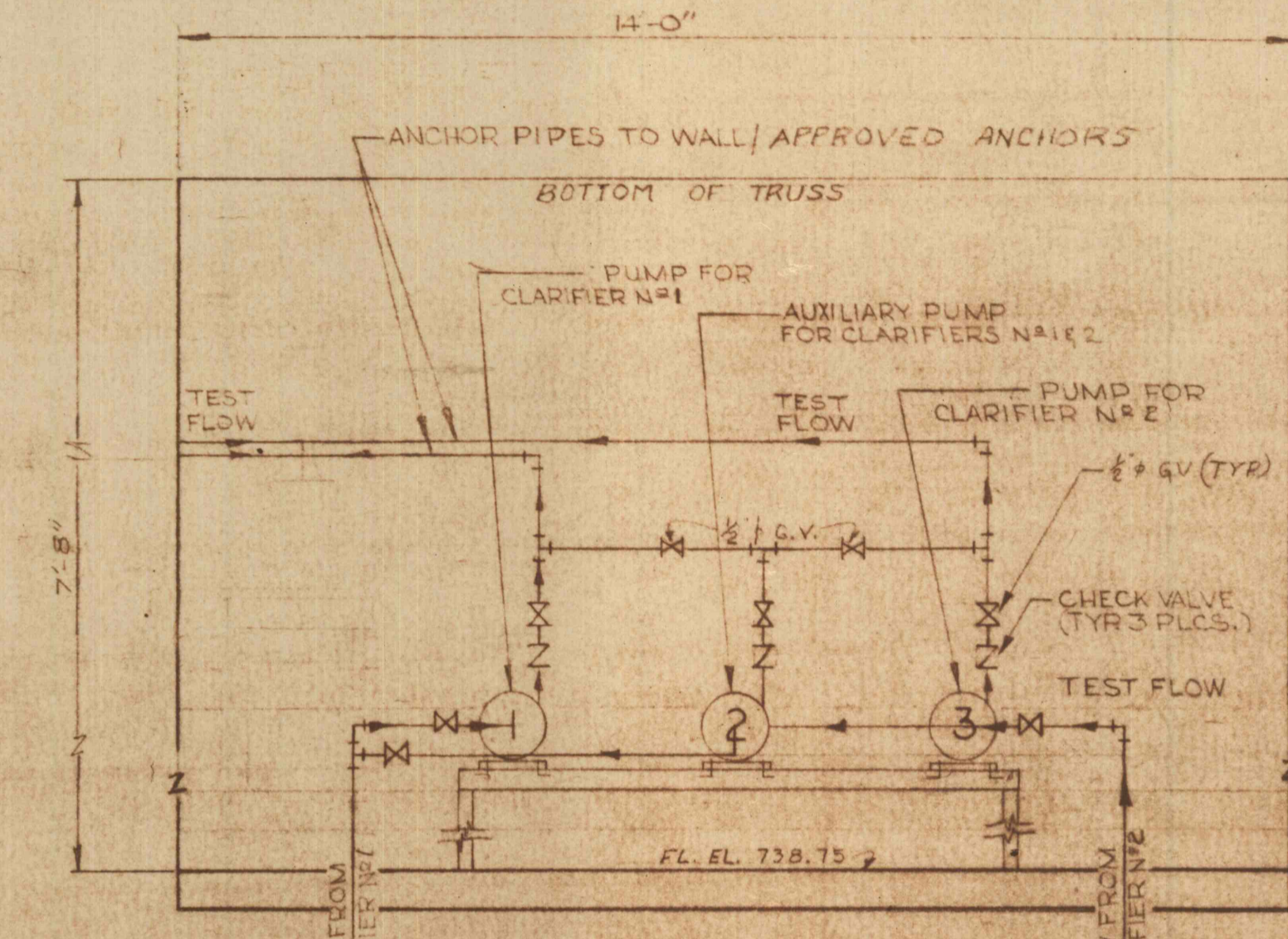


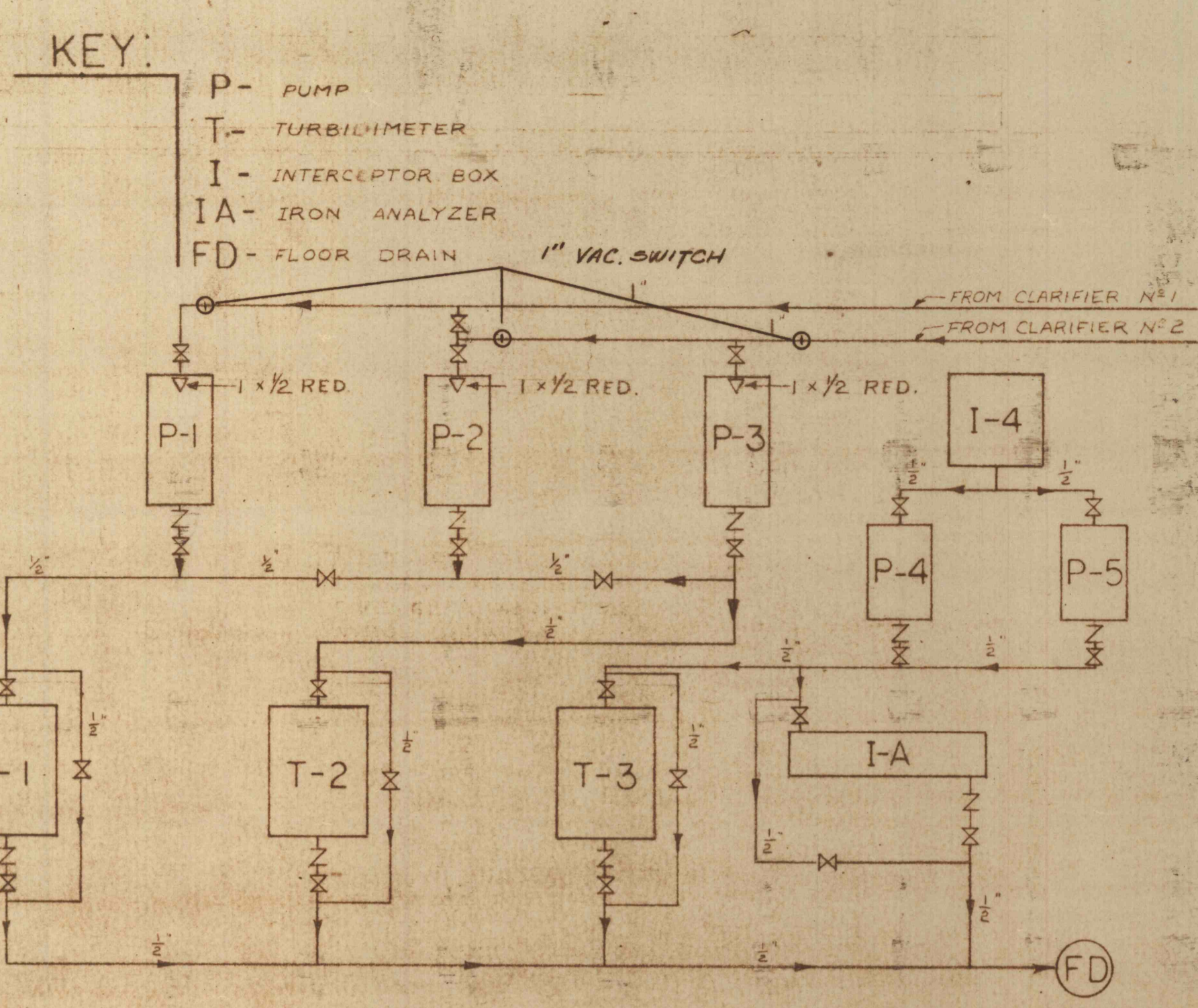
SECTION C-C
SCALE 1/2" = 1'-0"



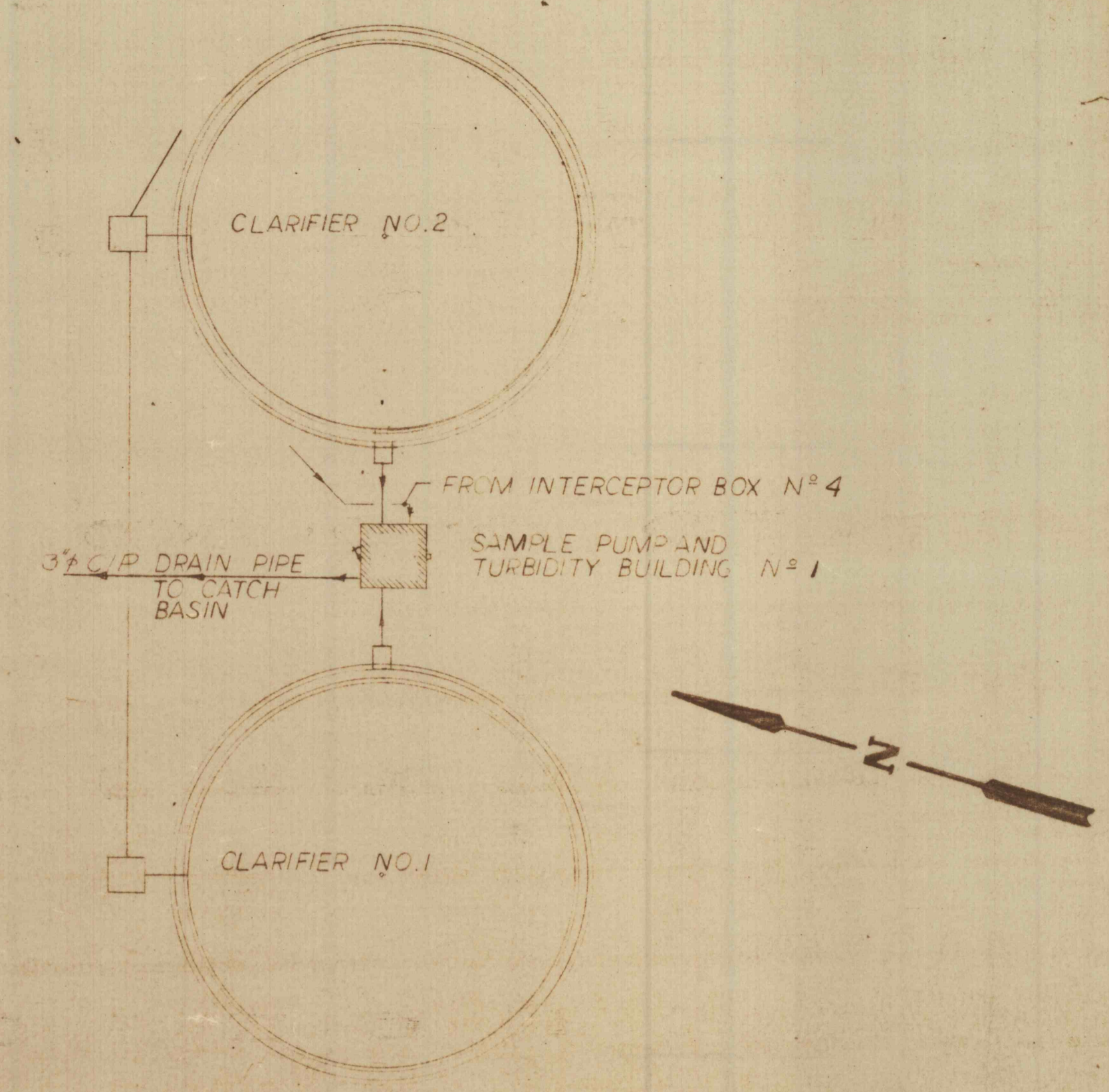
SECTION D-D
SCALE 1/2" = 1'-0"

GENERAL NOTE:

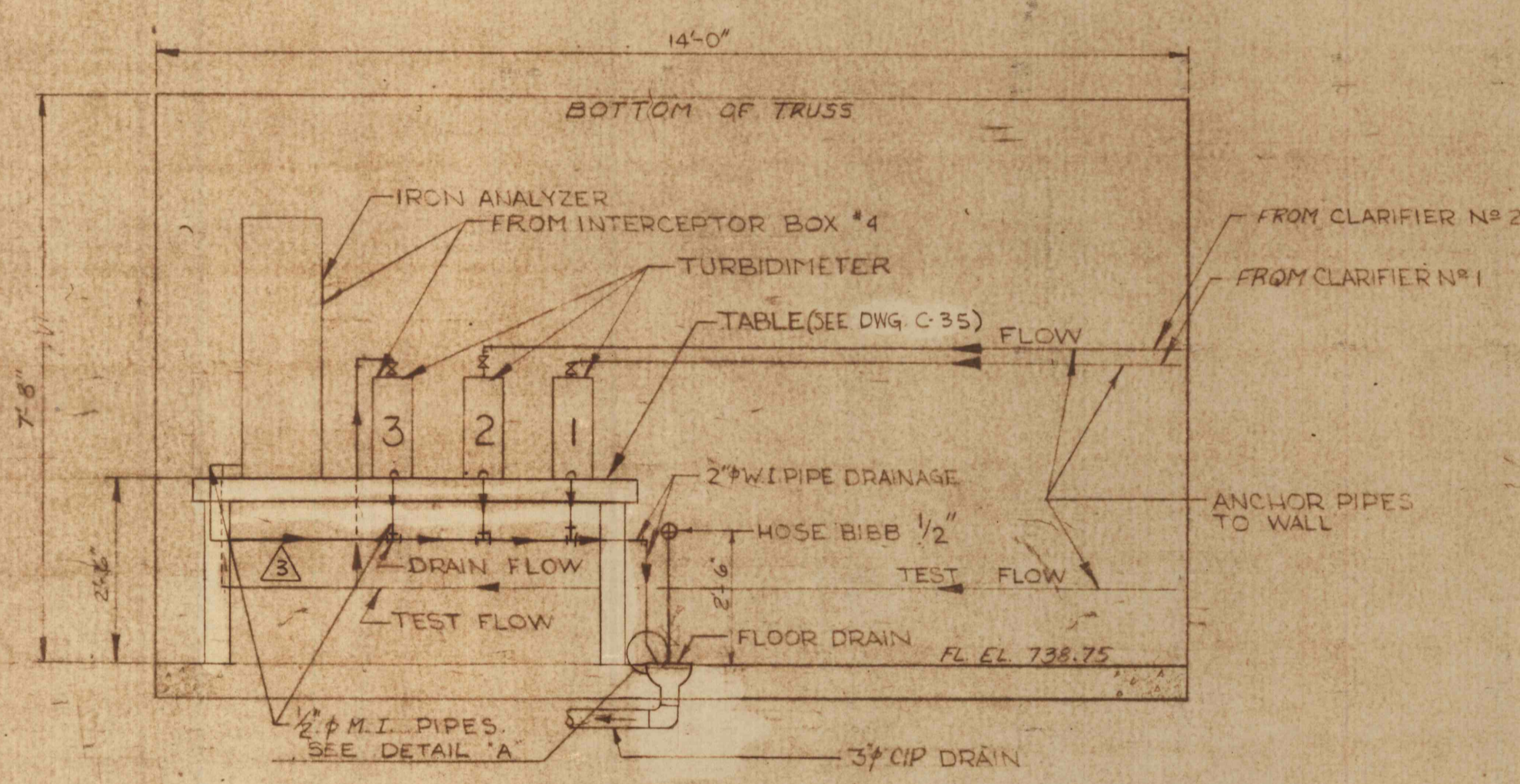
1. SEE DWG. NO. C-32 FOR ELEVATION VIEWS OF THIS BUILDING.
2. ALL PIPES & FITTINGS 1/2" M.I. UNLESS OTHERWISE SPECIFIED.
3. ANCHOR ALL PIPES TO WALLS, WITH APPROVED ANCHORS.
4. SUB-SOIL MUST BE UNIFORMLY WELL COMPACTED. A 6" BASE COURSE OF WELL COMPACTED STONE OR GRAVEL MUST BE PROVIDED BEFORE THE SLAB IS POURED.
5. ALL PIPING ENTERING/LEAVING BUILDING MUST BE SLEEVED AS PER SPECIFICATIONS.



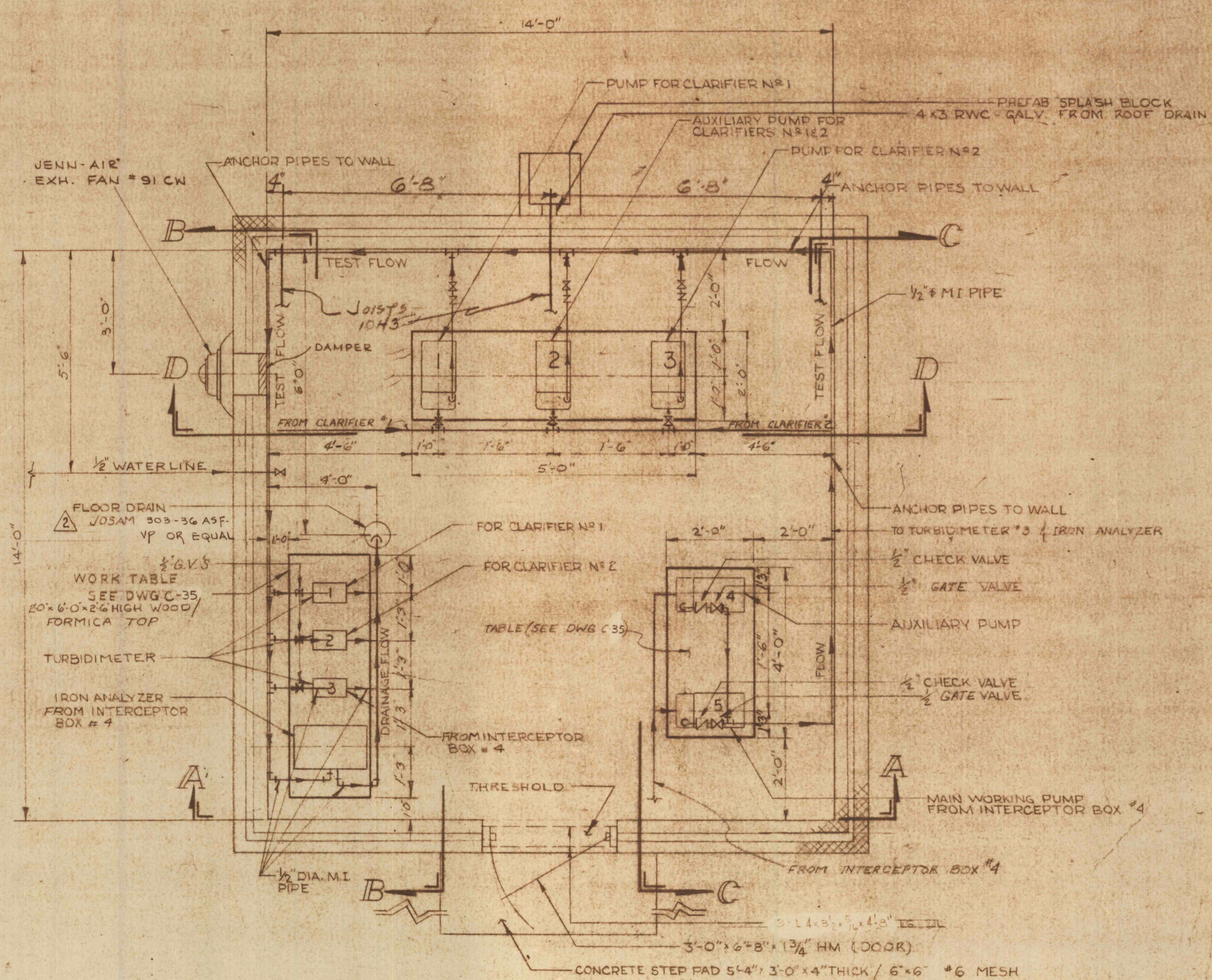
SCHEMATIC
NO SCALE



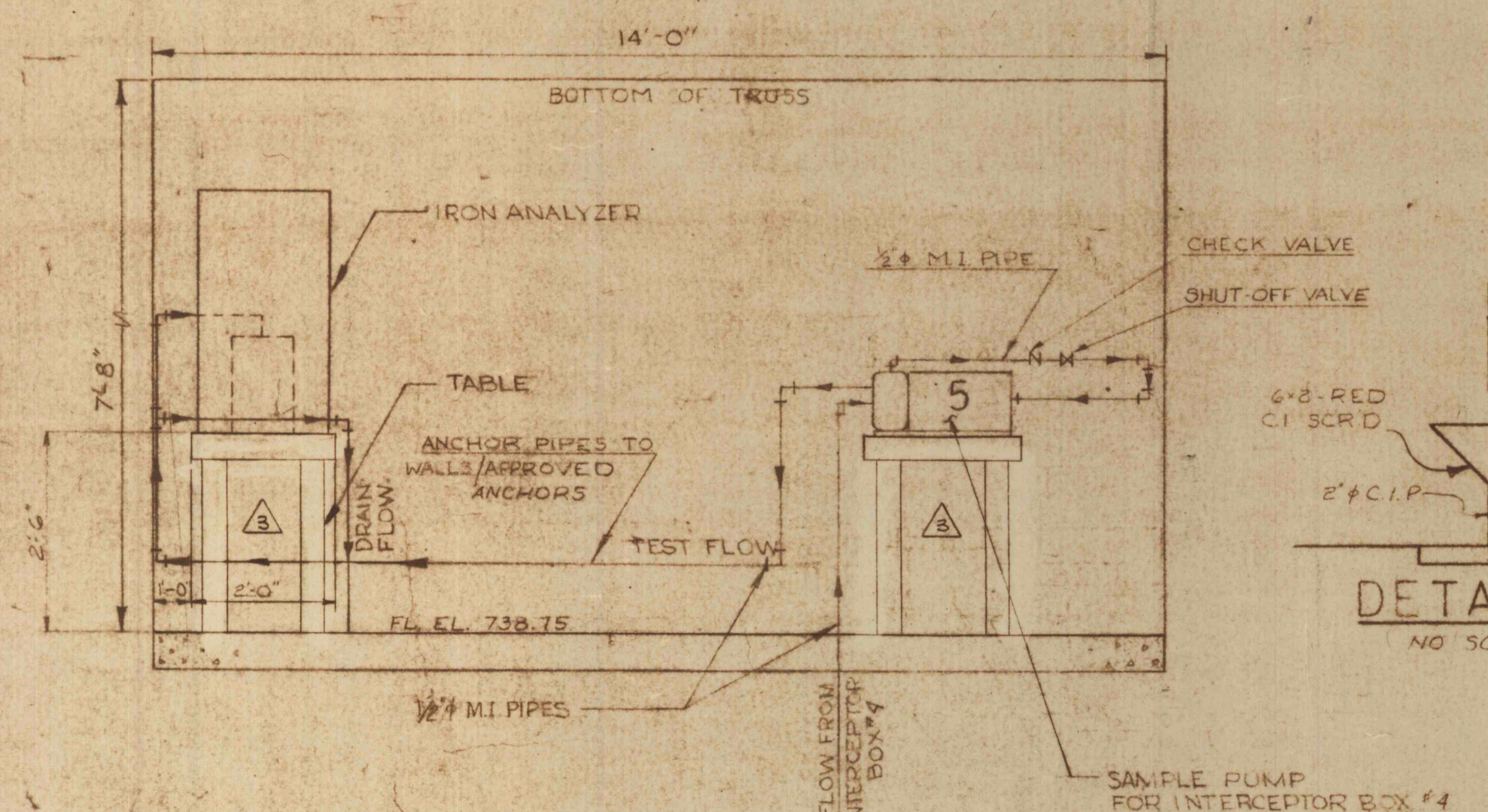
LOCATION PLAN (SEE DWG. C-1 & C-2)
SCALE 1" = 30'-0"



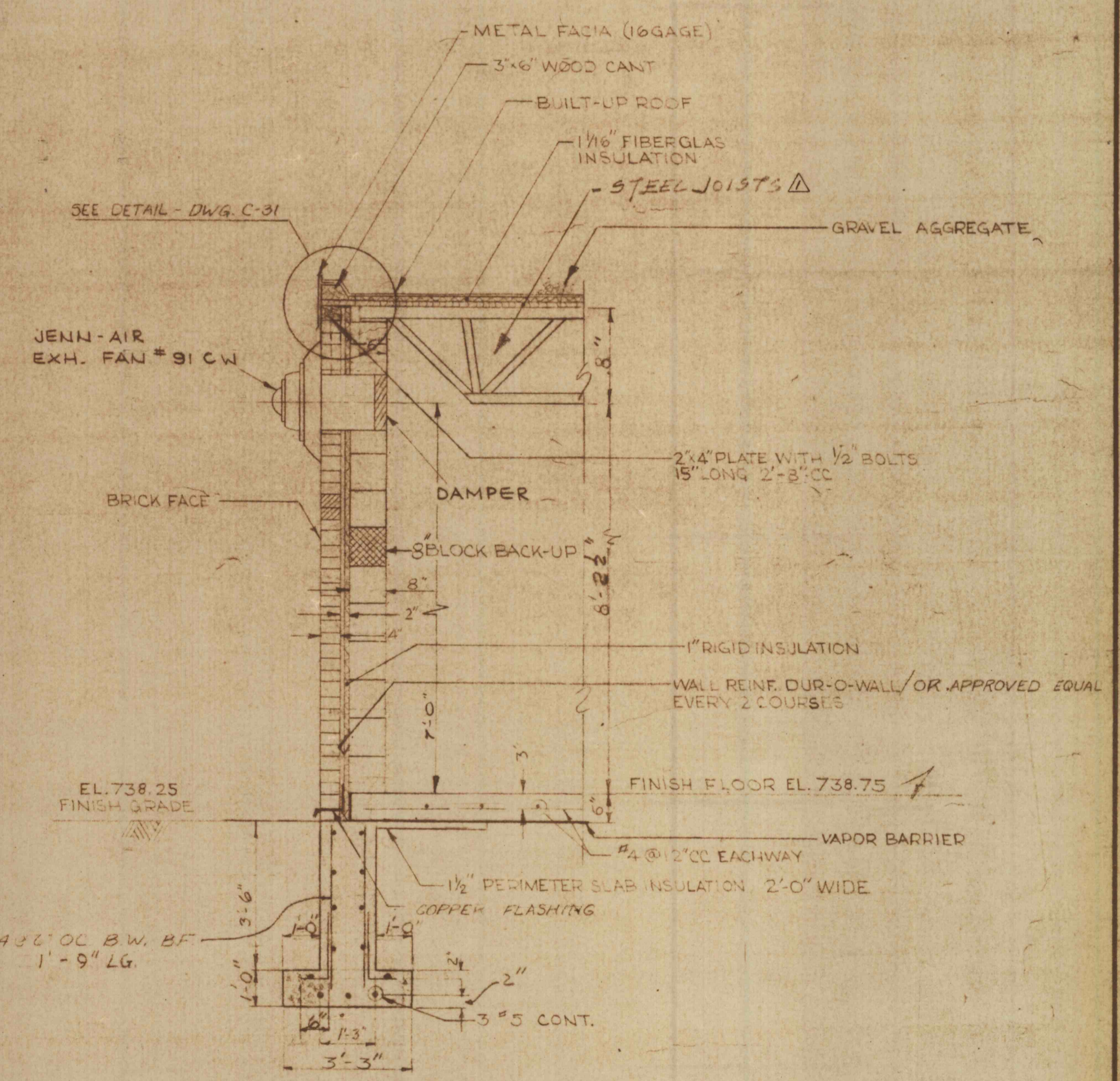
SECTION B-B
SCALE 1/2" = 1'-0"



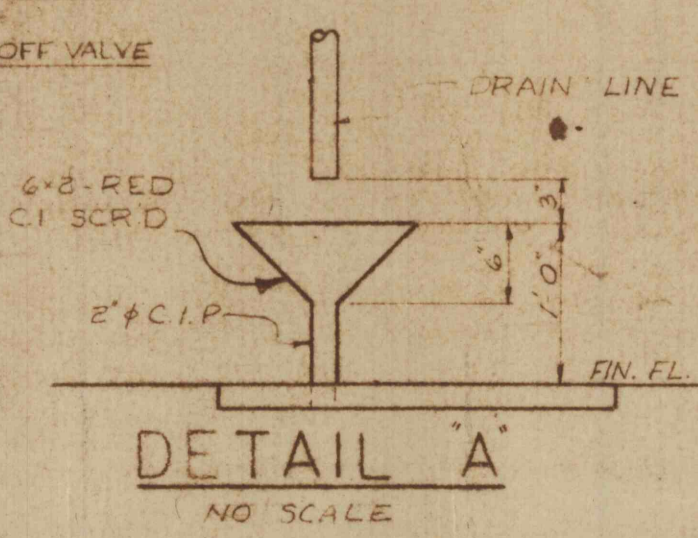
FLOOR PLAN
NO SCALE



SECTION A-A
SCALE 1/2" = 1'-0"



TYPICAL WALL SECTION
SCALE 1/2" = 1'-0"



DETAIL A
NO SCALE

3	211-71	REV. TABLES AS IND.
2	111-10	REV. FLR. DRAIN AS IND.
1	01-10	CHANGE 8H2 JOIST TO 10H3 JOIST IN SAMPLE PUMP BLDG. #1
REVISIONS		
SAMPLE PUMP BUILDING NO.1		
CONSTRUCTION OF TREATMENT FACILITIES FOR ACID MINE DRAINAGE RAUSCH CREEK WATERSHED SCHUYLKILL COUNTY, PENNSYLVANIA		JOB NO: 6805 DATE: JUN 1970 SCALE: NOTED DRAWN: Z.M. WALTON APPROVED: T.H. WALTON
ANTHRACITE RESEARCH & DEVELOPMENT CO. INC. consulting engineers POTTSVILLE PENNSYLVANIA TAMAQUA		DRAWING NO. C-30