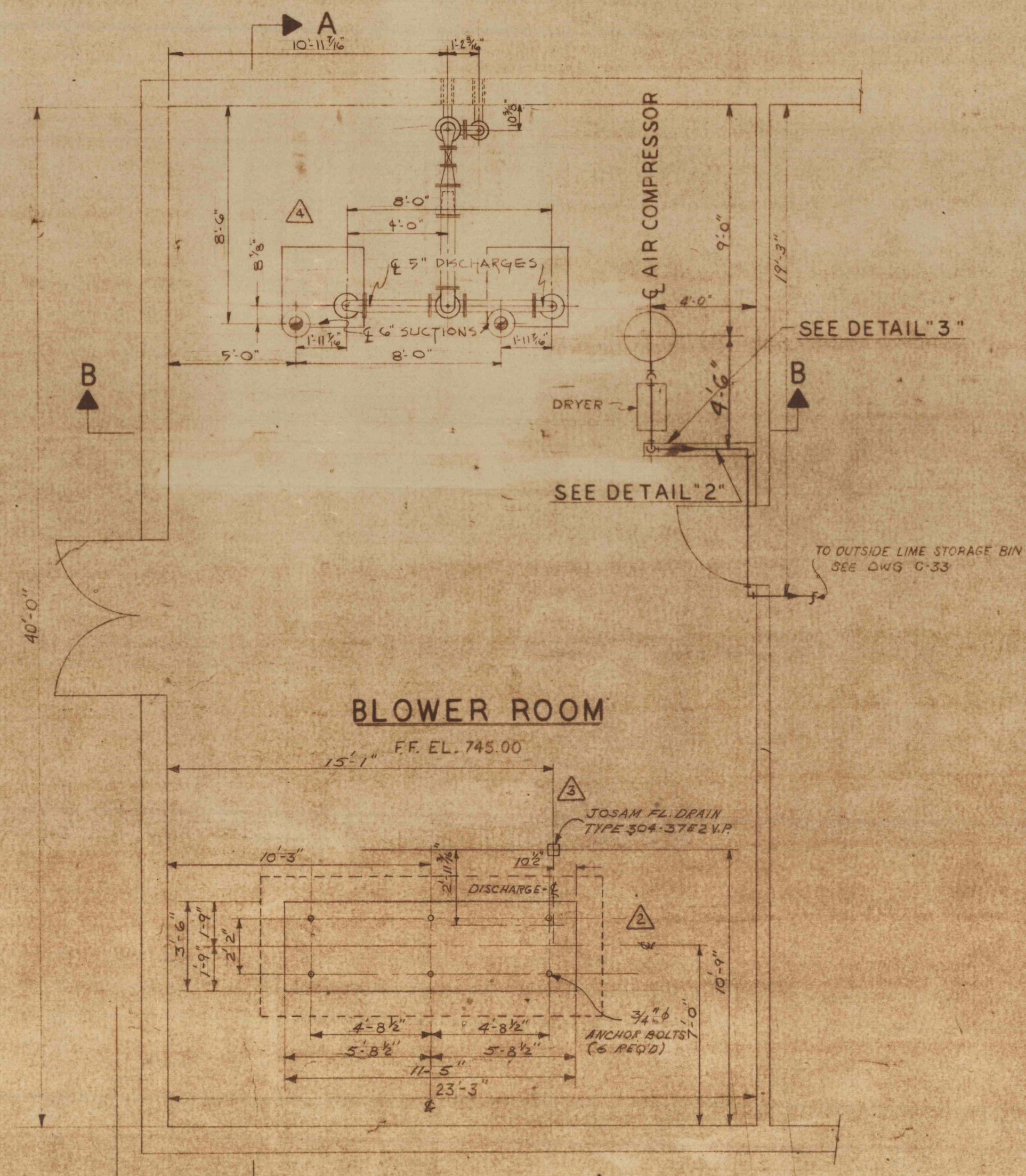
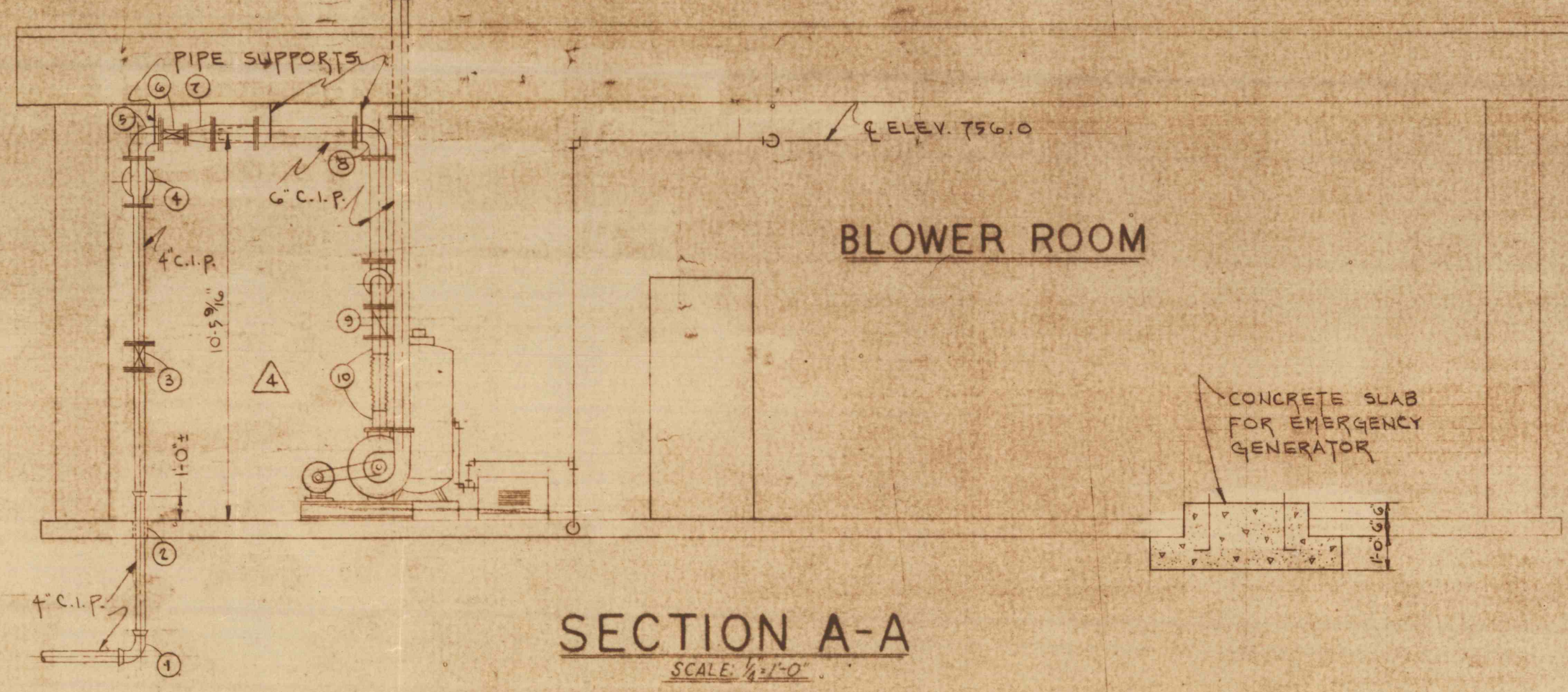


DETAIL "2"
AIR COMPRESSOR PIPING
NO SCALE



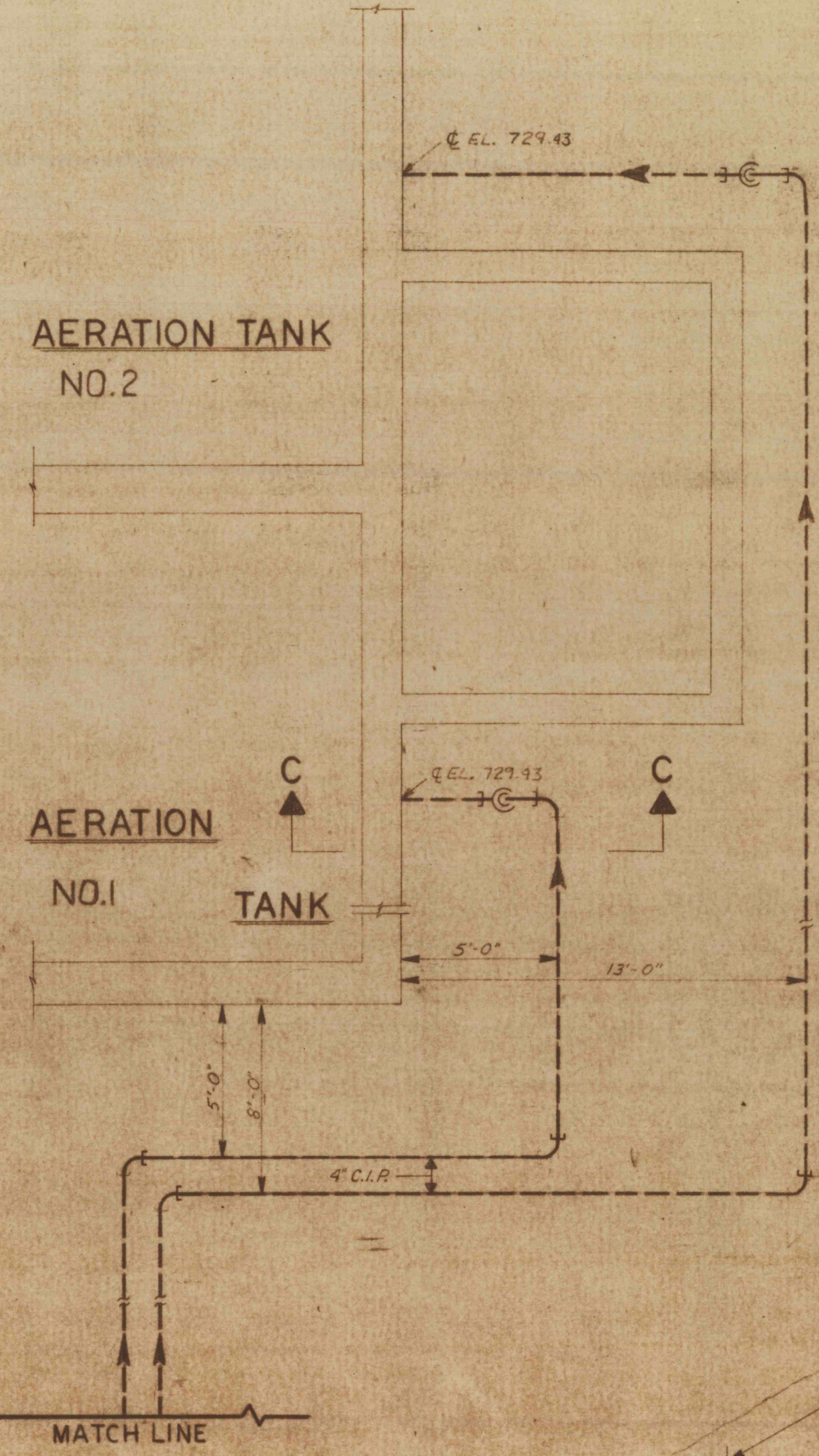
BLOWER ROOM

PLAN
SCALE 1/4" = 1'-0"



SECTION A-A
SCALE 3/4" = 1'-0"

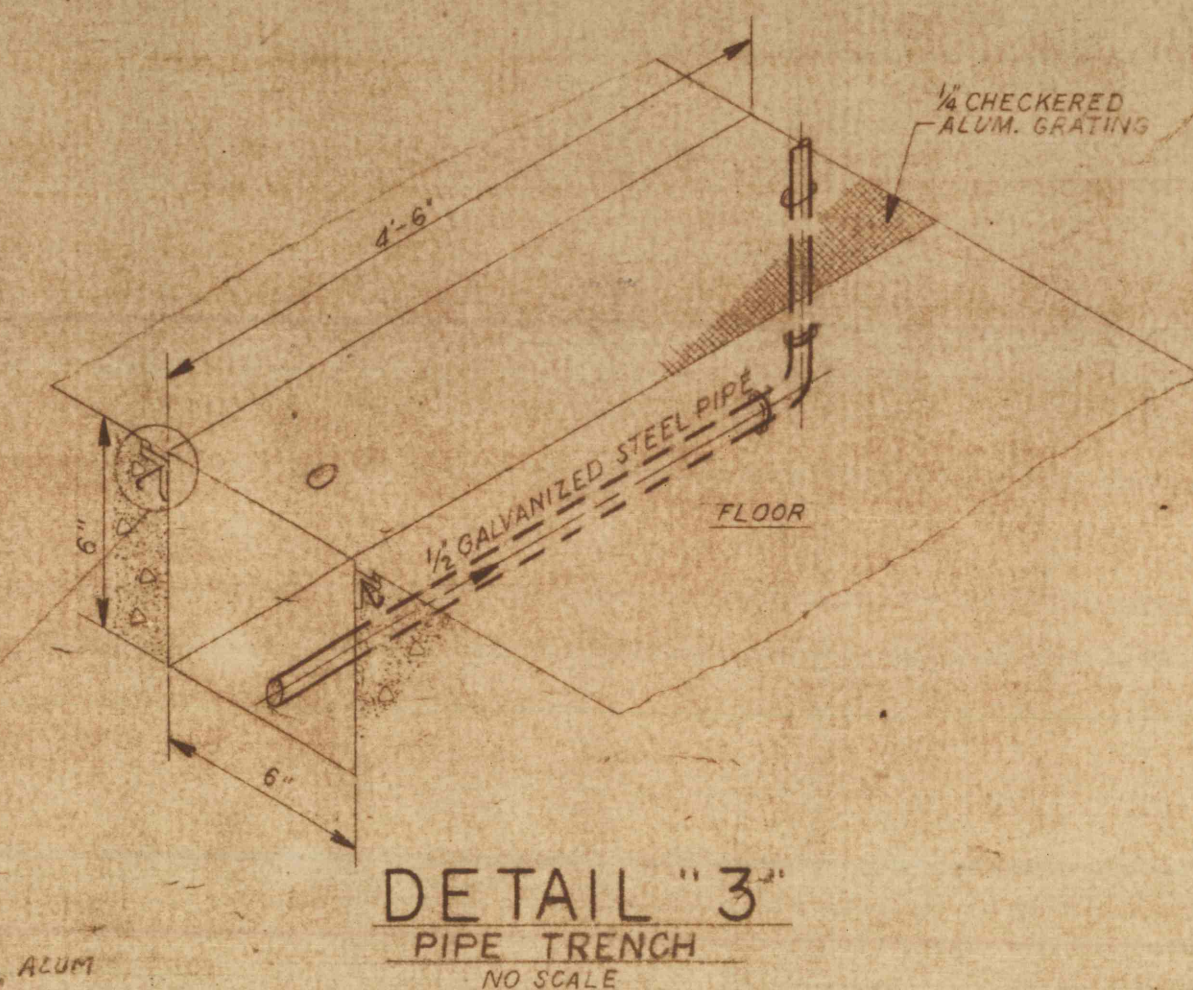
- ① 4" M_s 90° ELL.
- ② C.I. WALL SLEEVES (2)
- ③ 8" BUTTERFLY VALVE
- ④ 6" x 4" FFF TEE
- ⑤ 6" x 8" FFF 90° ELL.
- ⑥ 8" BUTTERFLY VALVE
- ⑦ 6" x 8" REDUCER
- ⑧ FFF 90° ELL.
- ⑨ CHECK VALVE
- ⑩ COMPANION FLANGE



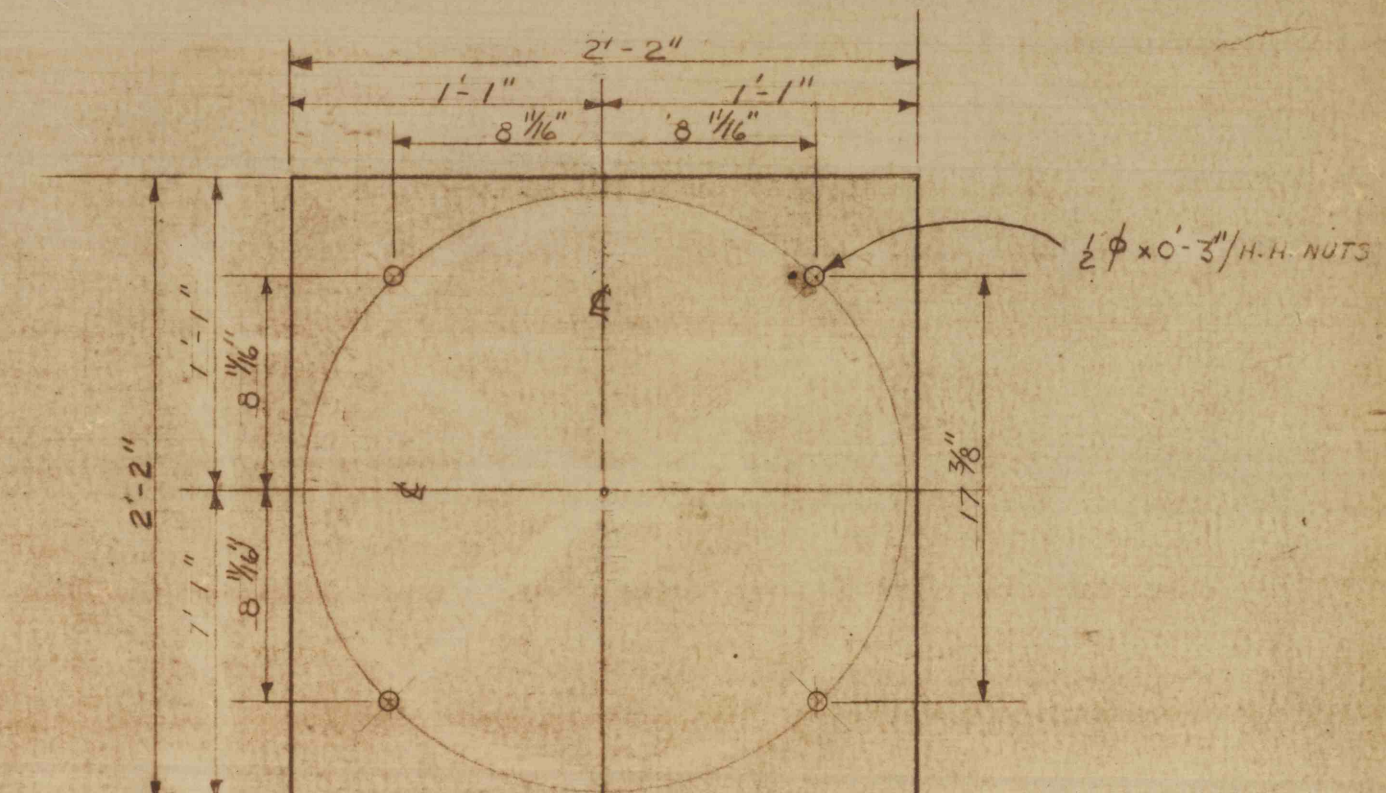
AERATION TANK NO. 2

AERATION TANK NO. 1

PLAN
SCALE 1/4" = 1'-0"

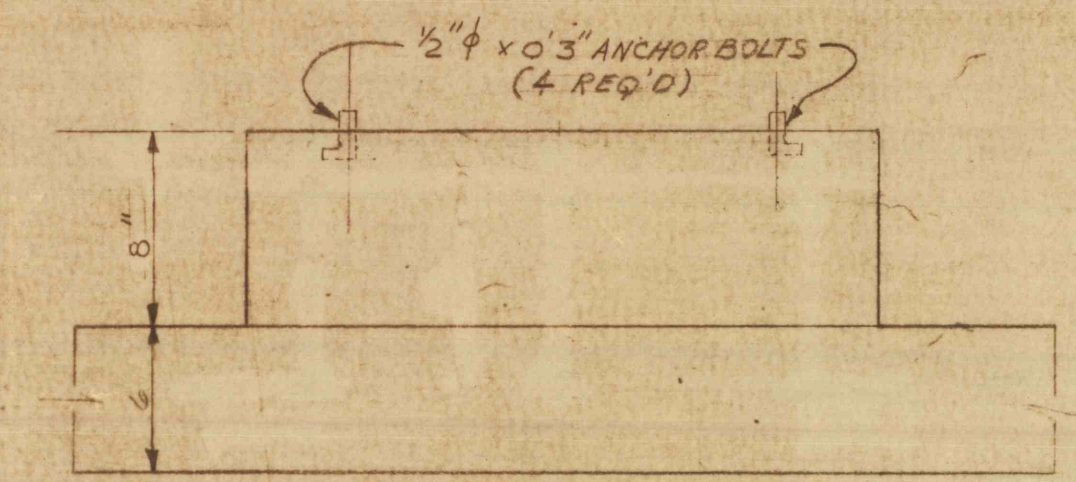


DETAIL "3"
PIPE TRENCH
NO SCALE



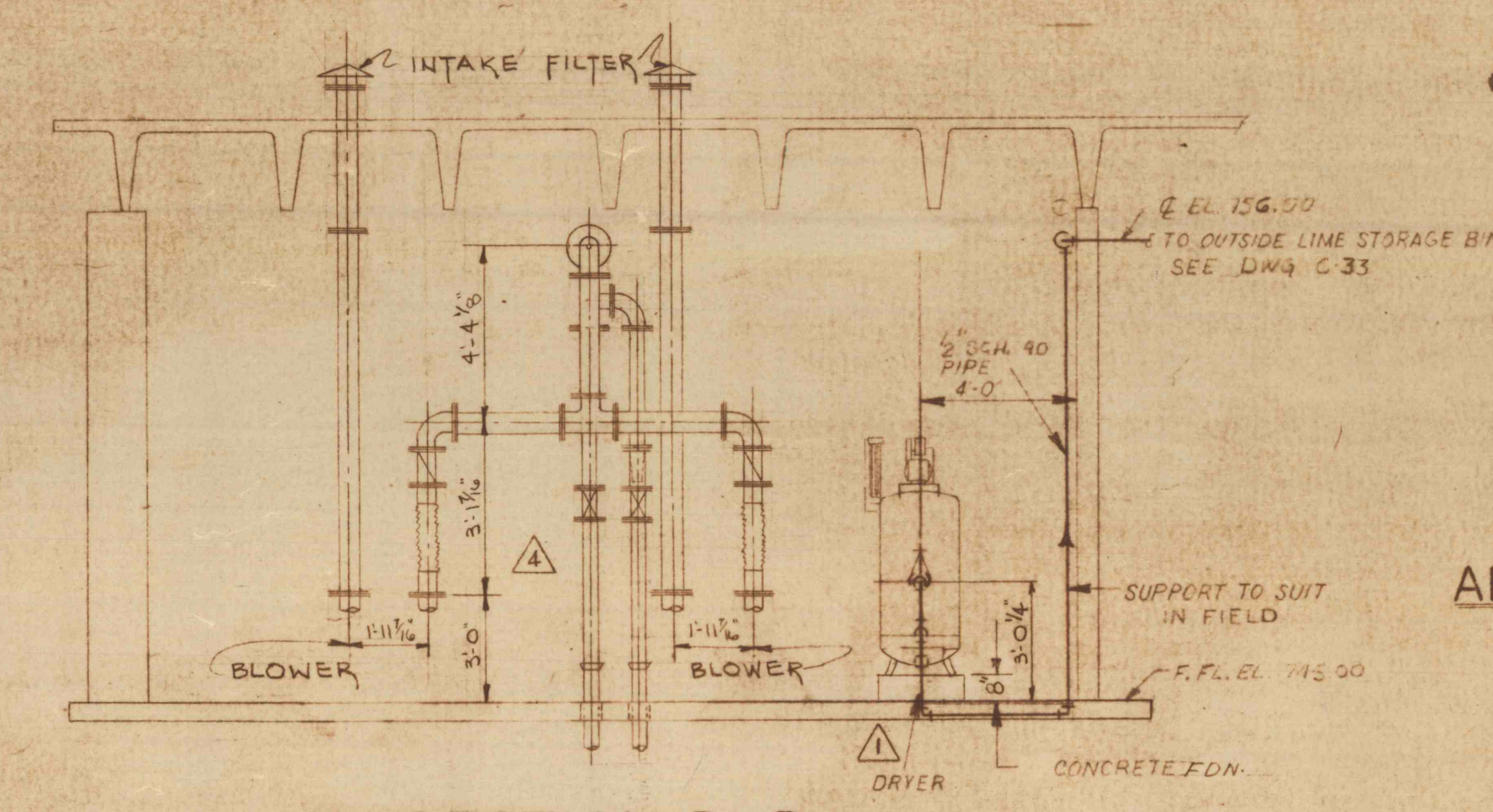
COMPRESSOR FOUNDATION Δ

SCALE 1/2" = 1'-0"

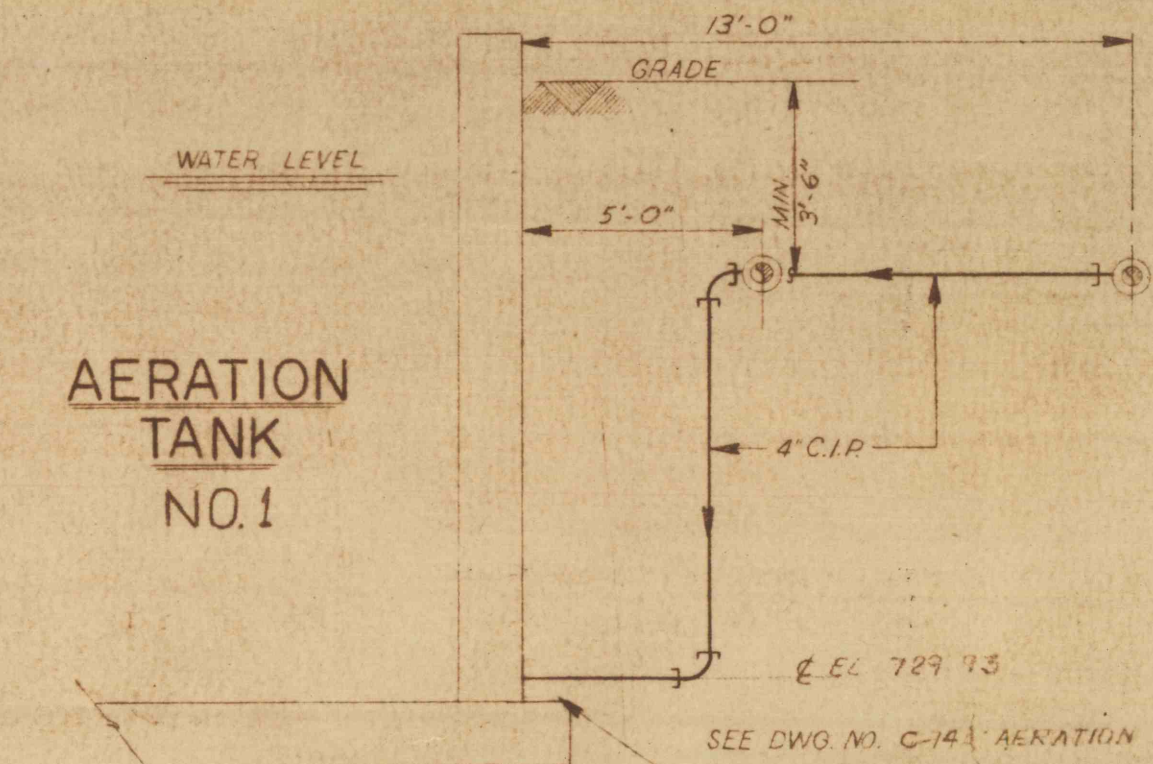


END ELEVATION Δ

SCALE 1/2" = 1'-0"



SECTION B-B
SCALE 1/4" = 1'-0"



AERATION TANK NO. 1

SECTION C-C
SCALE 1/4" = 1'-0"

GENERAL NOTE:
1 WATER-TIGHT FLANGED SLEEVE FOR ALL PIPES THRU WALLS OR SLABS BELOW WATER LEVEL

NO.	REVISIONS
4	2-22-71 REV. PIPING IN BLOWER ROOM
3	2-11-71 ADDED FLOOR DRAIN FOR 300 KW GENERATOR
2	2-11-71 ADDED CONC. PAD FOR 300 KW GENERATOR
1	3/5/71 REV. COMPRESSOR FOUNDATION AS INDICATED

BLOWER ROOM PLAN & DETAILS

CONSTRUCTION OF TREATMENT FACILITIES FOR ACID MINE DRAINAGE
RAUSCH CREEK WATERSHED
 SCHUYLKILL COUNTY PENNSYLVANIA

ANTHRACITE RESEARCH & DEVELOPMENT CO. INC.
 consulting engineers
 POTTSVILLE PENNSYLVANIA TAMAGUA

JOB NO: 6805
 DATE: JAN 1970
 SCALE: NOTED
 DRAWN: J.S.N.
 APPROVED: H.R.J.L.

DRAWING NO:
C-34

