

SURVEYOR'S CERTIFICATION

This survey has been made for the benefit of all parties interested in title, including but not limited to St. Clair Area School District, Unit 63-8, and their respective successors and assigns.

The undersigned Surveyor hereby certifies to all parties interested in title to premises surveyed that this map, plan, descriptions, and strict measure survey on which it is based, are made in accordance with the "minimum standard detail requirements for land title survey," jointly established and adopted by ATA and ACSM, 1962.

The undersigned Surveyor further certifies that the various items shown on the plan are erected entirely upon the land covered by the deed description and survey and that there are no overhangs or encroachments upon any easements or right-of-way of others, except as shown.

The undersigned Surveyor still further certifies that the limit of property and various items shown on the plan are true and correct as to accuracy (by a field survey conducted on July 26, 1983) as required by the Commission and for which the undersigned accepts full responsibility.

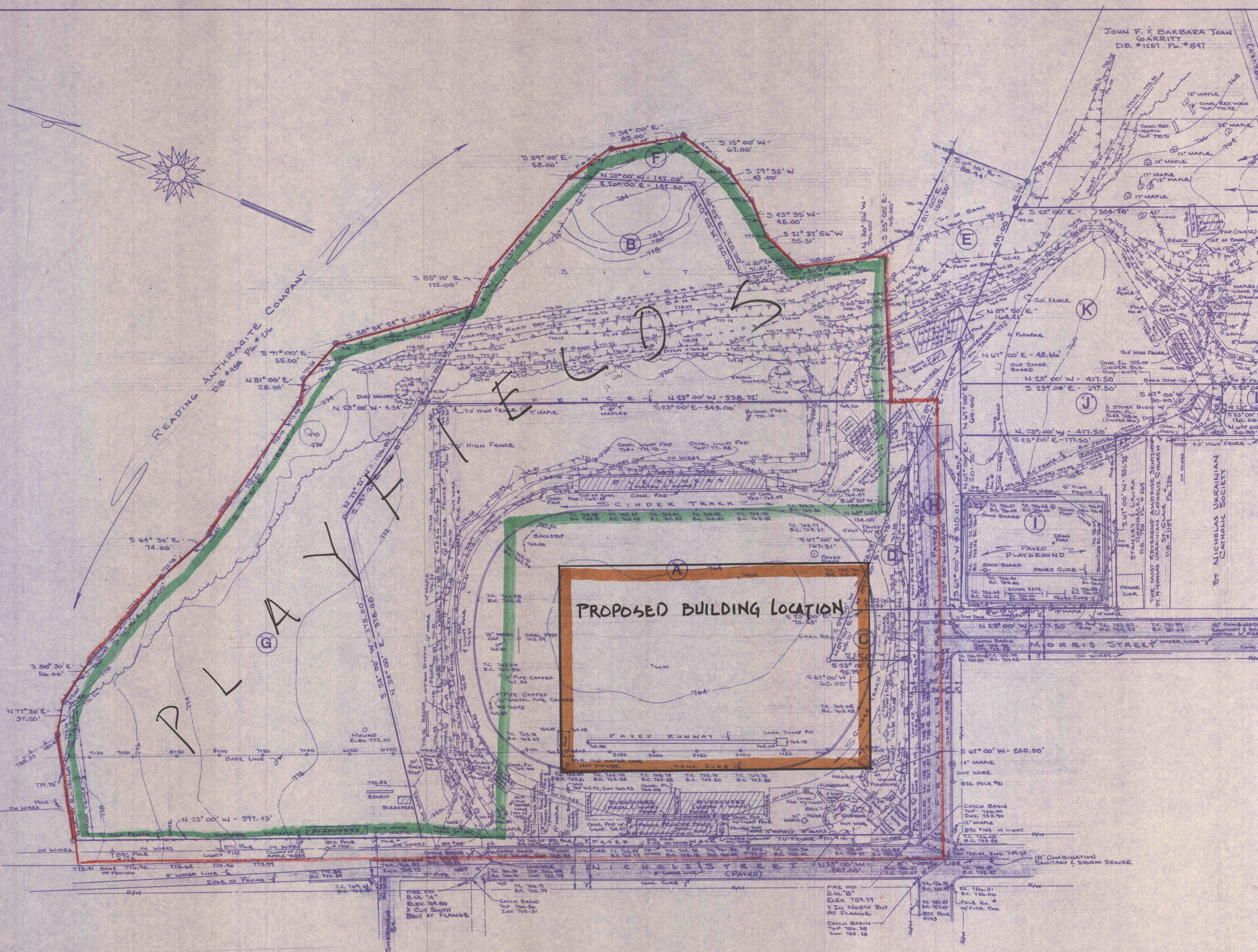
The undersigned Surveyor still further certifies that the survey and plan were prepared by the undersigned or under his direct supervision.

I signed this 2ND day of AUGUST, 1983.
 [Signature]
 REGISTERED PROFESSIONAL LAND SURVEYOR
 My Pennsylvania License Number is 7784-E.



PARCEL SCHEDULE

PARCEL	GRANTOR	GRANTEE	PRESENT DEED BOOK	RECORDING PAGE NO.	SQUARE FEET	ACRES
(A)	St. Clair Area Sch. Dist. Unit 63-8	St. Clair Area Sch. Dist. Unit 63-8	781 915	546 301	290,648.17	6.672
(B)	St. Clair Brough	St. Clair Area Sch. Dist. Unit 63-8	Proposed to be Quit Claimed		98,186.93	2.254
(C)	St. Clair Brough	St. Clair Area Sch. Dist. Unit 63-8	Proposed to be vacated		4,989.57	0.115
(D)	St. Clair Area Sch. Dist. Unit 63-8	St. Clair Area Sch. Dist. Unit 63-8	Proposed to be Quit Claimed		5,906.96	0.136
(E)	Rg. Anth. Co.	St. Clair Area Sch. Dist. Unit 63-8	952	216	30,318.74	0.696
(F)	Rg. Anth. Co.	St. Clair Area Sch. Dist. Unit 63-8	952	216	13,052.92	0.300
(G)	Rg. Anth. Co.	St. Clair Area Sch. Dist. Unit 63-8	952	216	147,998.68	3.398
(H)	St. Clair Brough	St. Clair Area Sch. Dist. Unit 63-8	Proposed to be vacated		14,325.47	0.329
(I)	St. Clair Brough	St. Clair Area Sch. Dist. Unit 63-8	1255	423	35,739.63	0.820
(J)	St. Clair Brough	St. Clair Area Sch. Dist. Unit 63-8	Proposed to be Quit Claimed		21,450.00	0.492
(K)	St. Clair Brough	St. Clair Area Sch. Dist. Unit 63-8	646 1216	227 808	74,217.16	1.704
(L)	St. Clair Brough	John Sninsky	Proposed to be Quit Claimed		3,600.00	0.083
NOTE: TOTAL AREA OF PROPOSED ST. CLAIR AREA SCHOOL DISTRICT					736,864.23	16.916



- UTILITY INFORMATION:**
- Water** - Schuylkill County Municipal Authority
221 South Centre Street, Pottsville, PA 17901
717-622-8240
David Holley, Manager
 - Sewer** - Saint Clair Sewer Authority
39 North Second Street
Saint Clair, PA 17970
717-429-1512
Bill Feeley, Manager
 - Gas** - Allied Gas Company, Pottsville District
300 South Centre Street
Pottsville, PA 17901
717-622-5262
Harold Fey, Manager
 - Television** - Service Electric Cable TV, Inc.
Main and Pine Streets, Mahanoy City, PA 17948
717-773-2585
 - Electricity** - Pennsylvania Power and Light Company
Morris and Industrial Roads, Frackville, PA 17931
717-874-2793
 - Telephone** - Bell Telephone Company of Pennsylvania
324 North Centre Street, Pottsville, PA 17901
717-622-3717 - Architects and Builders Services

NOTE: - 8" gas line is located approximately 90' west of site
 - Location of water, gas and sanitary sewer lines are approximate only (from old maps). These locations shall be proven by utility companies prior to construction.
 - Gas line depth varies 3' to 5' below surface.
 - Water line depth varies 4' to 6' below surface.

BENCH MARK SCHEDULE

BENCH MARK	ELEVATION	DESCRIPTION AND LOCATION
"A"	769.80	X Cut in South Bolt at Flange of Fire Hydrant 90' South of Sherman Street on West Side of Nichols Street
"B"	759.79	X Cut in North Bolt at Flange of Fire Hydrant North East Corner of Nichols & Franklin Streets

- GENERAL NOTES**
- Datum for elevations shown hereon are derived from U.S. Geological Bench Mark P42 Elevation 790.17. A standard disc stamped "P42 1934".
 - This Property and Topographic Plan & Survey do NOT include any investigation on subsurface mining since the same was NOT authorized in this contract.
 - All exterior property corners are cast metal survey monuments in concrete which are inscribed "St. Clair Area School District - Unit 63-8 - Property Line Mark - Do Not Disturb - Merlyn J. Jenkins, RPLS, August 1983". These markers are set in concrete at each angle in the overall property line.
 - There is an existing sprinkling system under football field which is inoperative. Location of system is not known either by visual inspection or by the School District's maintenance personnel.

LEGEND

- ⊙ --- CAST METAL SURVEY MONUMENT IN CONCRETE
- --- SURVEY STATION MARKER
- ⊖ --- POLE
- --- TOP OF CURB
- B.C. --- BOTTOM OF CURB
- CONC. --- CONCRETE
- M.H. --- MANHOLE
- RET. --- RETAINING
- W/S --- WATER - STOP
- MONUM. --- MONUMENT
- --- PROPERTY LINE
- R/W --- RIGHT-OF-WAY LINE

EL ASSOCIATES
 904 N. Second St., Harrisburg, Pa. 17102

**PROPOSED SITE FOR
 NEW SCHOOL FACILITY
 ST. CLAIR AREA SCHOOL DISTRICT
 ST. CLAIR - SCHUYLKILL CO
 PENNA.**

EL ASSOCIATES
 904 N. Second St., Harrisburg, Pa. 17102