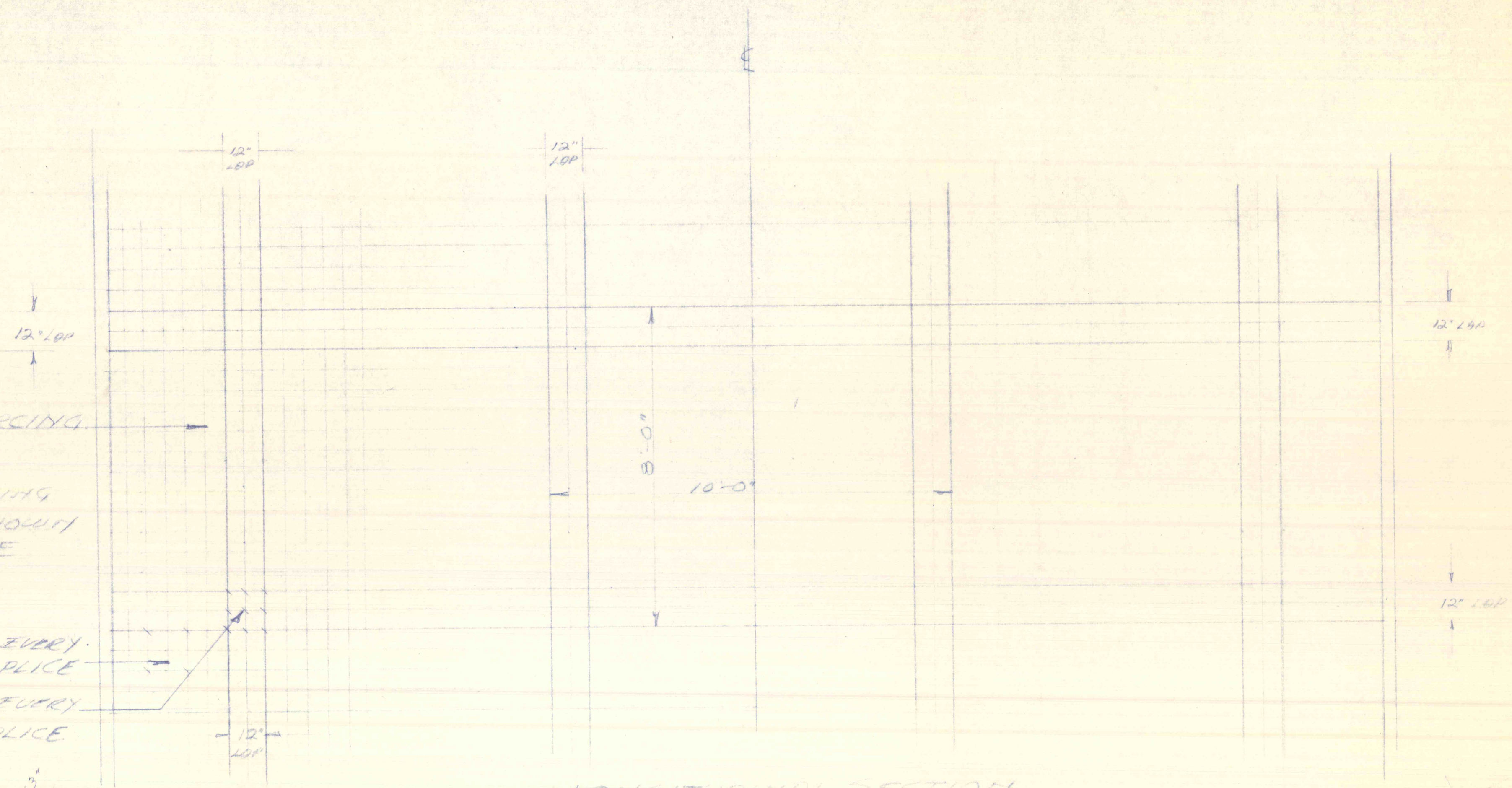


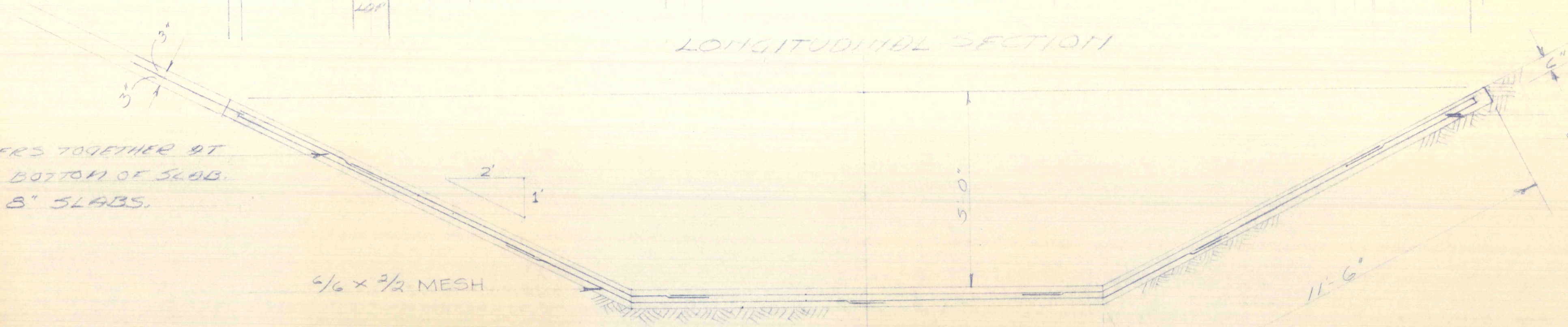
NOTE:
 BOTTOM REINFORCING
 OPPOSITE AS SHOWN
 IN TRANSVERSE

NOTE:
 TIE REINFORCING EVERY
 12" @ SINGLE SPLICE
 TIE REINFORCING EVERY
 6" @ DOUBLE SPLICE

BOTH LAYERS TOGETHER AT
 3" FROM BOTTOM OF SLAB.
 ON 6" x 8" SLABS.



LONGITUDINAL SECTION



TRANSVERSE SECTION
 TYPICAL SECTION

REINFORCING SUPPORTED
 ON 3" METAL CHAIRS

REINFORCING PLAN	
SWOTARD CREEK	DATE 4/6/74
SWOTARD CREEK CO	SCALE 1/2" = 1'-0"
DEPT. OF ENVIRONMENTAL RESOURCES	DR BY H.G.
MOBLE QUINNELL & SON, INC.	SHEET #1