

Traverse Station	Coordinates	
	North	East
0+00	10,000.000	10,000.000
5+89.39	9,666.381	10,485.922
10+19.89	9,379.267	10,806.717
11+12.19	9,456.878	10,856.693
13+35.54	9,614.179	10,698.150
16+02.86	9,820.245	10,527.889
17+66.60	9,918.189	10,396.685
20+00.15	10,087.813	10,236.164
21+74.01	10,178.447	10,087.809
23+72.89	10,000.000	10,000.000

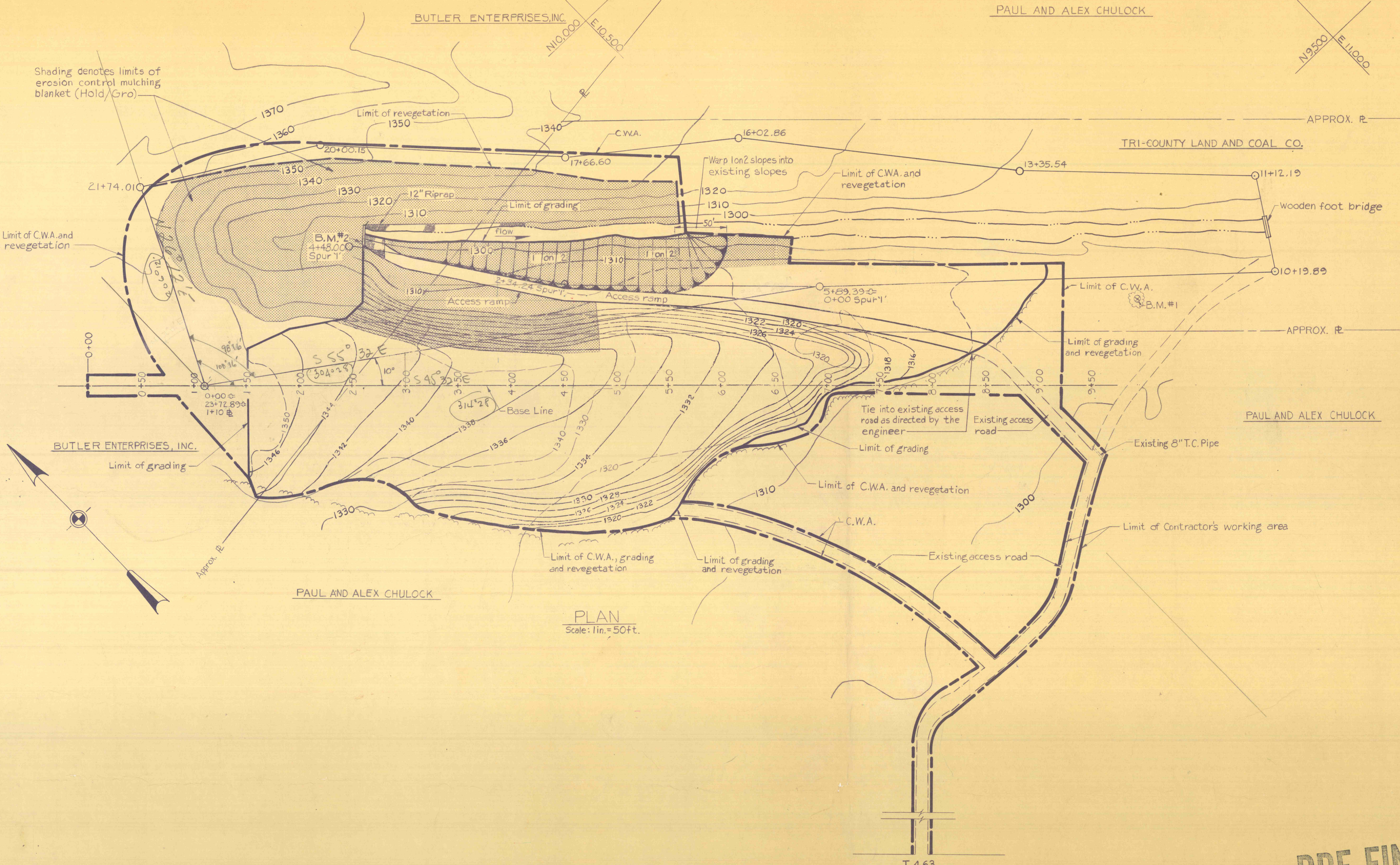
Adjusted spur line No. 1

A+5+89.39	9,666.381	10,485.922
2+34.24	9,828.549	10,316.897
4+48.00	10,001.721	10,191.580

No.	BENCH MARKS	ELEV.
1	R.R. spike in 15" oak tree in vicinity of traverse Sta 9+94, 22 ft. left	1305.56
2	Top of 8" I.D. plastic pipe at the portal	1302.61

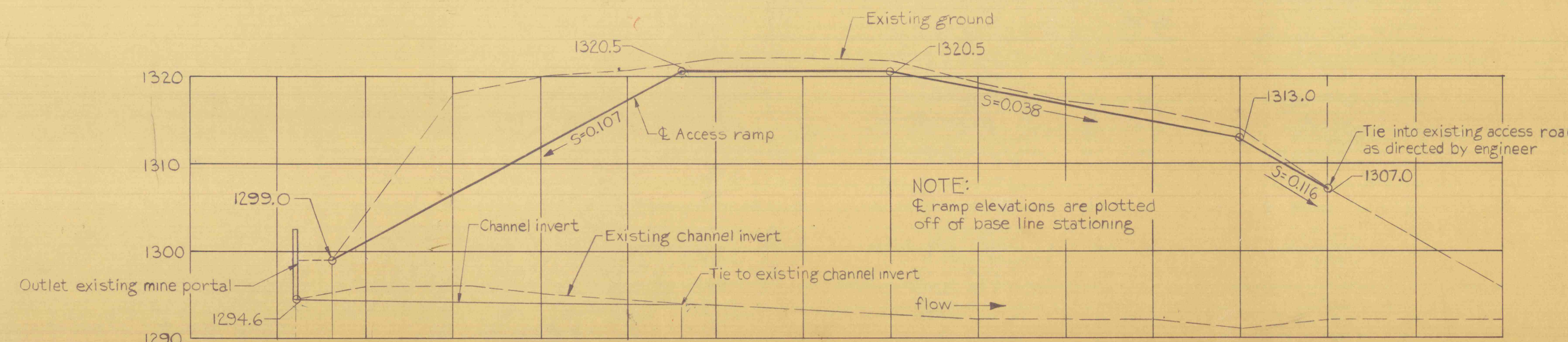
GENERAL NOTES:

- All elevations shown are based on current U.S.G.S. datum. Elevation of the features are to be taken from the bench marks shown on the drawings.
- Minor adjustments in alignment and grade may be made by the engineer to suit field conditions.
- Limits of grading and revegetation as shown on the plans and cross sections are approximate. Deviations may be permitted subject to the approval of the engineer and provided that the full intent of the project is satisfied.
- All disturbed areas within the contractors working area and access must be regraded, revegetated and restored to at least the existing conditions.
- It is the contractors responsibility to continually maintain the existing access road from T-463 to the project area during the duration of the contract.
- The contractor shall where directed, fill and grade areas adjacent to the new construction so as to provide positive surface runoff.



PLAN Scale: 1 in. = 50 ft.

PRE FINAL



BASE LINE ACCESS RAMP PROFILE Scale: Horiz. 1 in. = 50 ft. Vert. 1 in. = 10 ft.

REFERENCES:

- For cross sections and details see Dwg. No. 4.
- Stationing as shown on the access ramp profile is "base line" stationing.

NO.	DATE	REVISION	APPR.

SUBMITTED
PROJECT CO-ORDINATOR
APPROVED
CHIEF-DIVISION OF MINE RECLAMATION
APPROVED
DIRECTOR-BUREAU OF DESIGN

COMMONWEALTH OF PENNSYLVANIA
 DEPARTMENT OF ENVIRONMENTAL RESOURCES
 OFFICE OF RESOURCES MANAGEMENT

CONTRACT NO. SL 135-10-101.1

MINE DRAINAGE POLLUTION ABATEMENT
 QUAKAKE TUNNEL
 SITE RESTORATION

PACKER TWP. CARBON CO., PA.

PLAN AND PROFILE