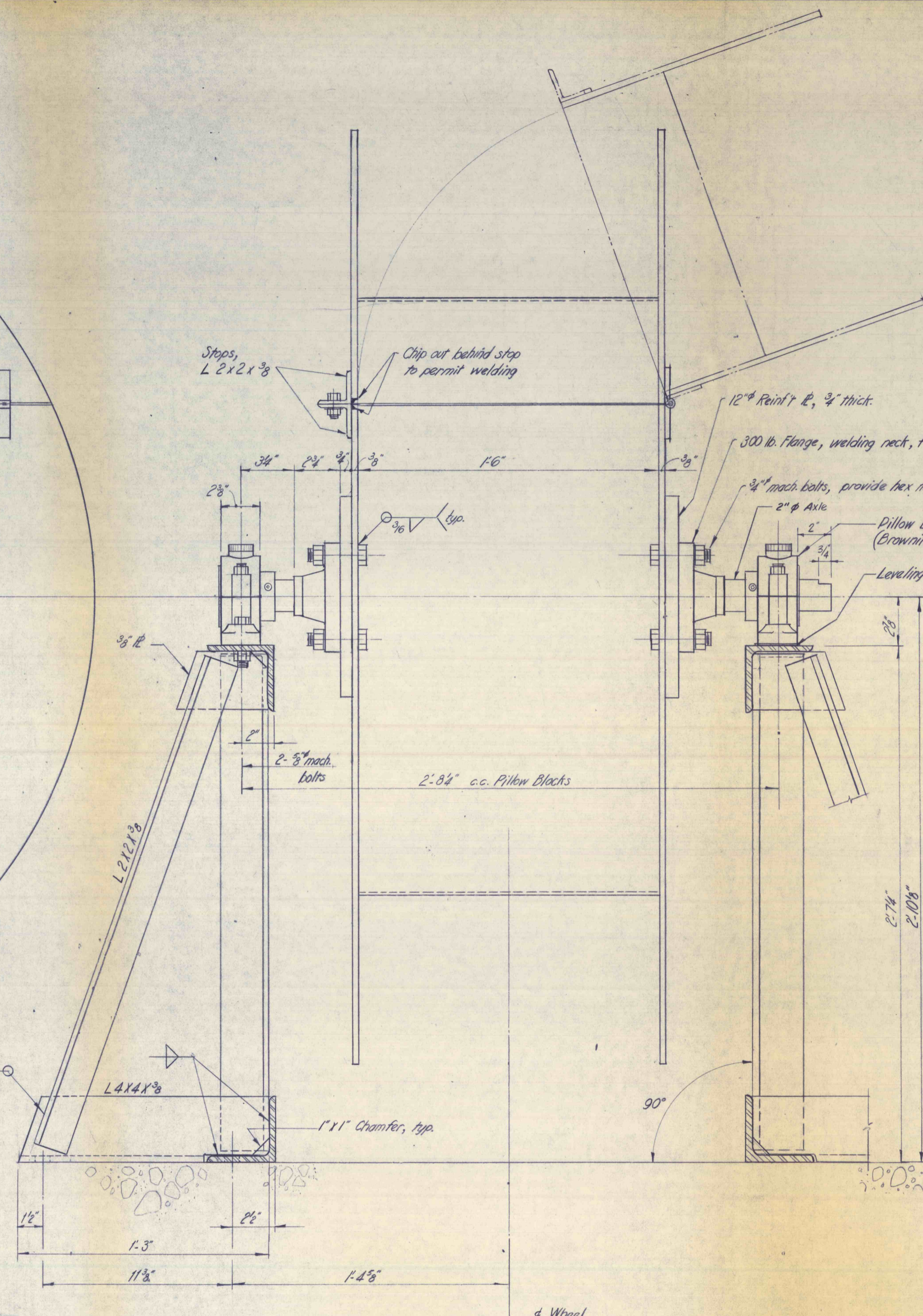


SIDE ELEVATION



FRONT ELEVATION

* Typical top and bottom frame connections.
All fillet welds are 4", unless otherwise noted.

NO.	DATE	REVISION	APPR.
SUBMITTED			
PROFESSIONAL	<i>Stephen J. McBride</i>		
APPROVED	<i>Andrew E. Friedrich</i>		
	CHIEF - DIVISION OF MINE AREA RESTORATION		
APPROVED	<i>S. E. Kyle for V. M. Bend</i>		
	DIRECTOR - BUREAU OF RESOURCES PROGRAMMING		
COMMONWEALTH OF PENNSYLVANIA DEPARTMENT OF ENVIRONMENTAL RESOURCES OFFICE OF RESOURCES MANAGEMENT			
CONTRACT NO. SL 135-10-102.1			
QUAKE TUNNEL DEMONSTRATION PROJECT			
PACKER TWP.		CARBON CO., PA.	
GEO - Technical Services CONSULTING ENGINEERS & GEOLOGISTS 851 So. 19th St. HARRISBURG, PENNA.			
REVOLVING DRUM DETAIL			
DRAWN BY	DATE	DRAWING NO.	
J.L.T.	APRIL 1977	15 of 18	
CHECKED BY	SCALE		
S.J.M.	3" = 1'-0"		