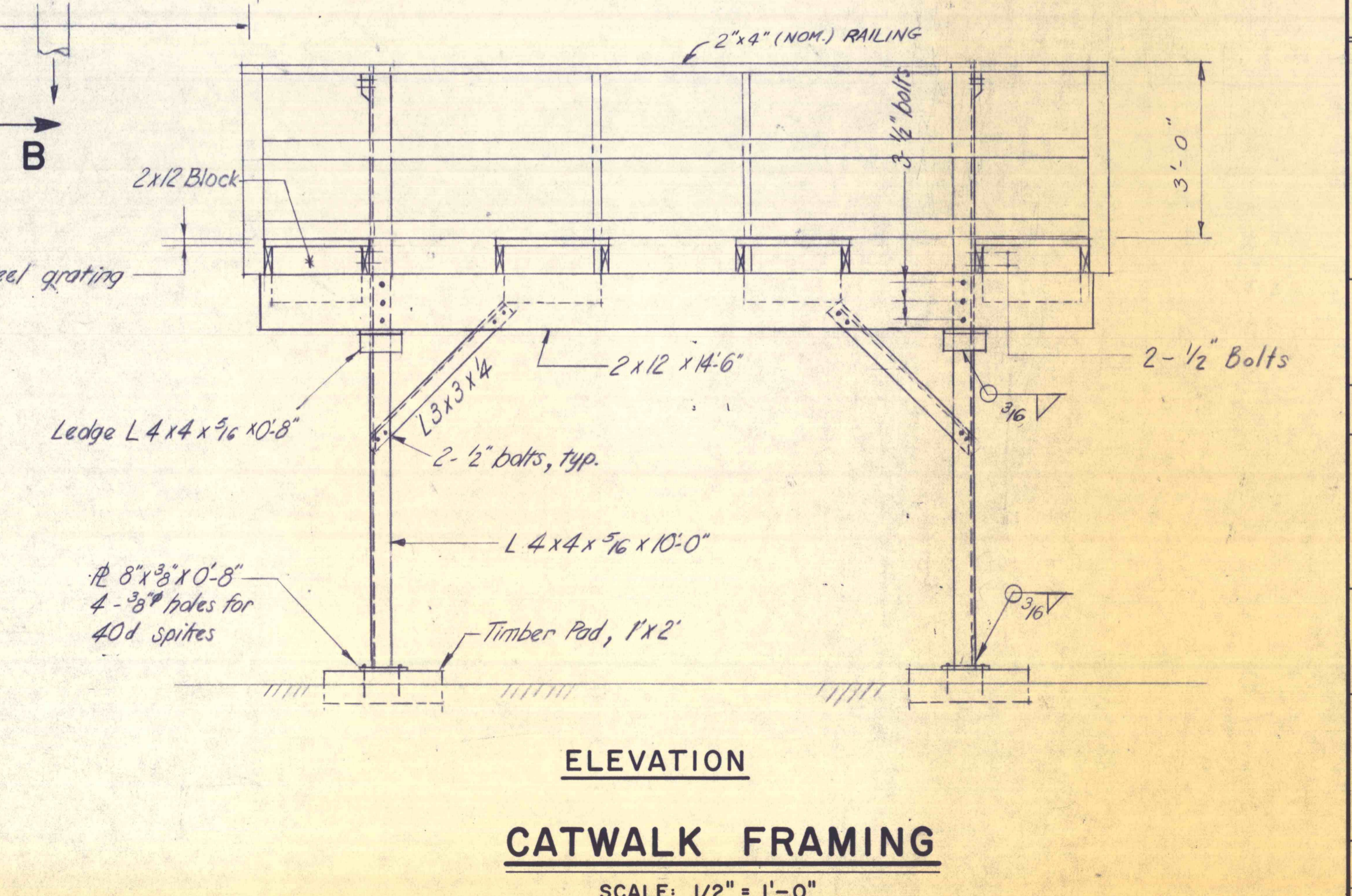
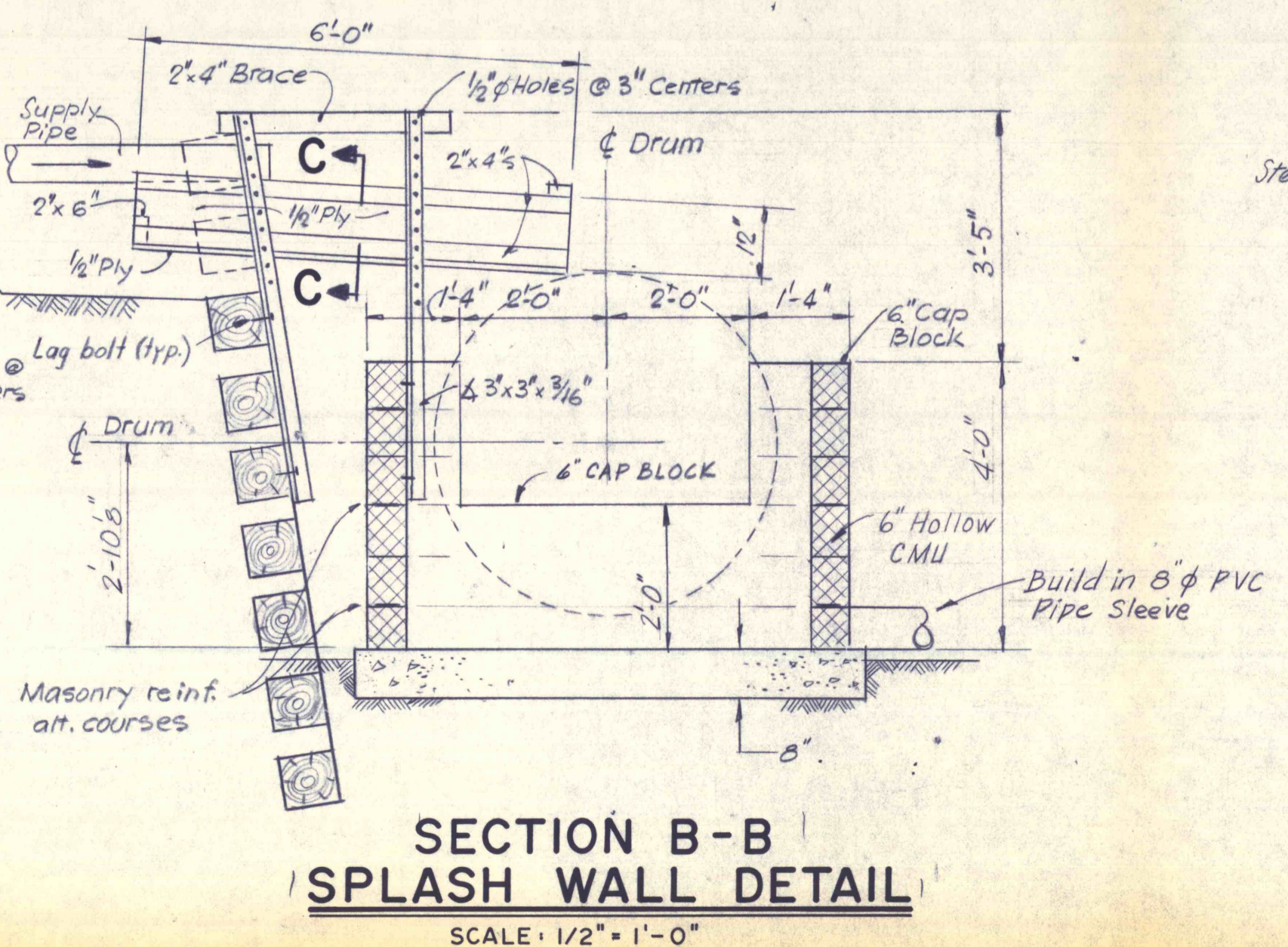
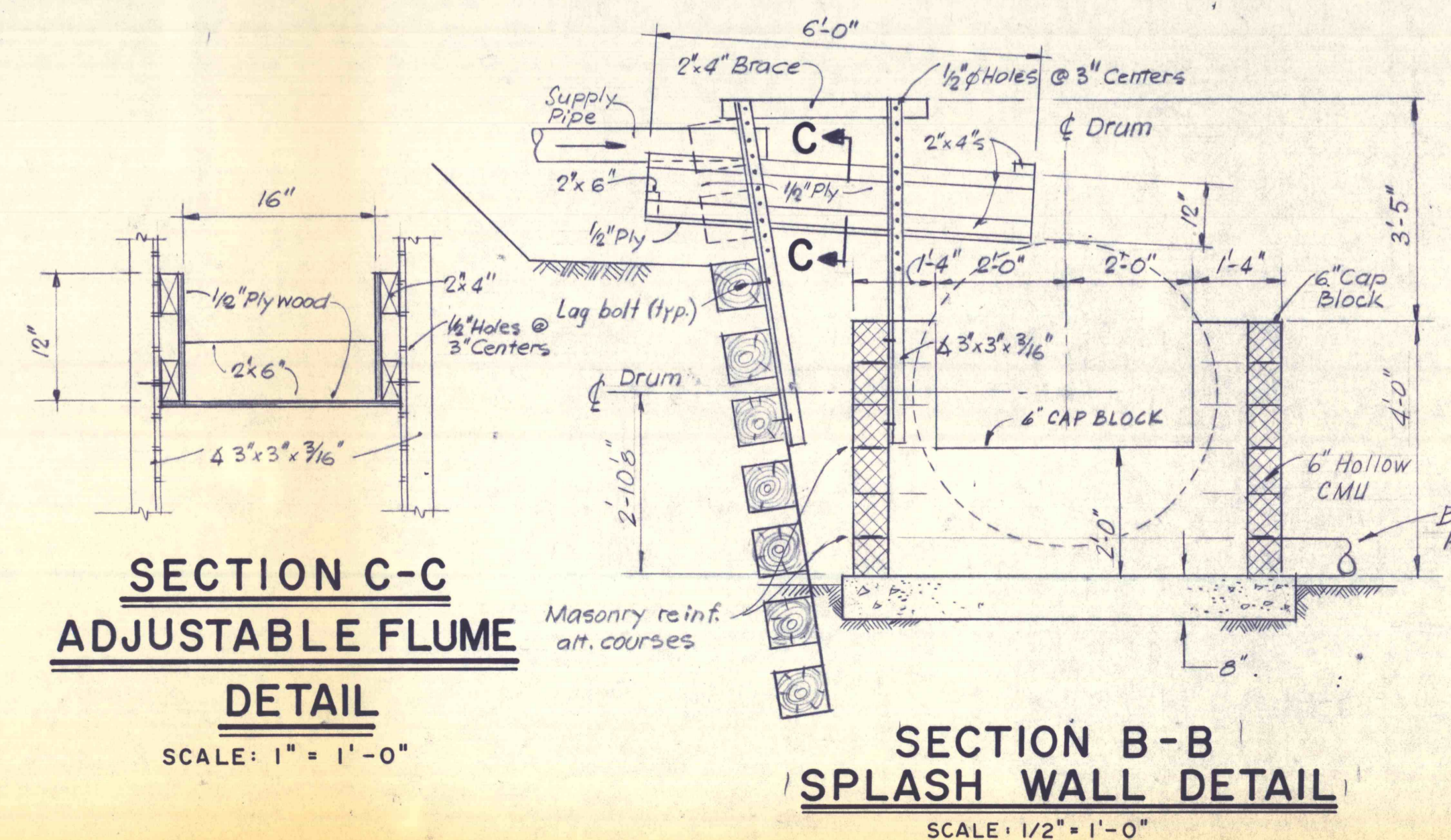
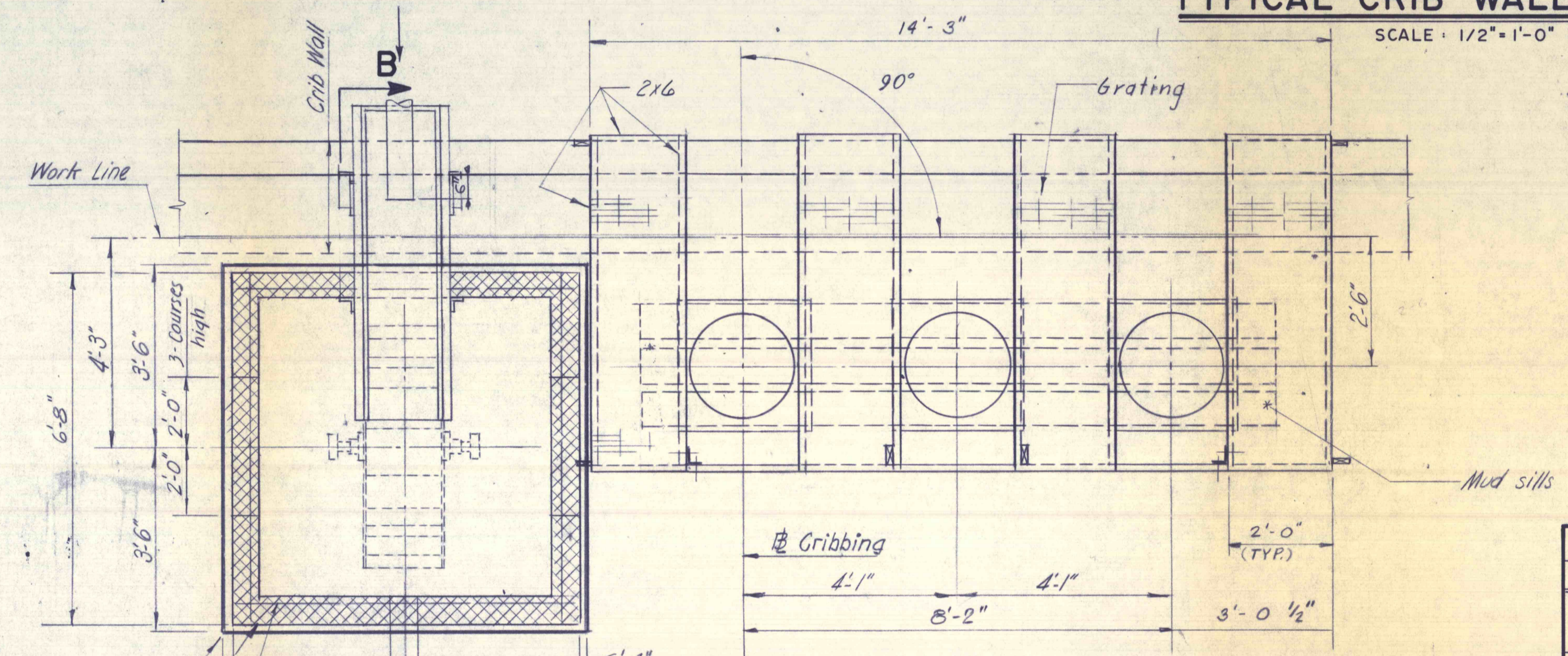
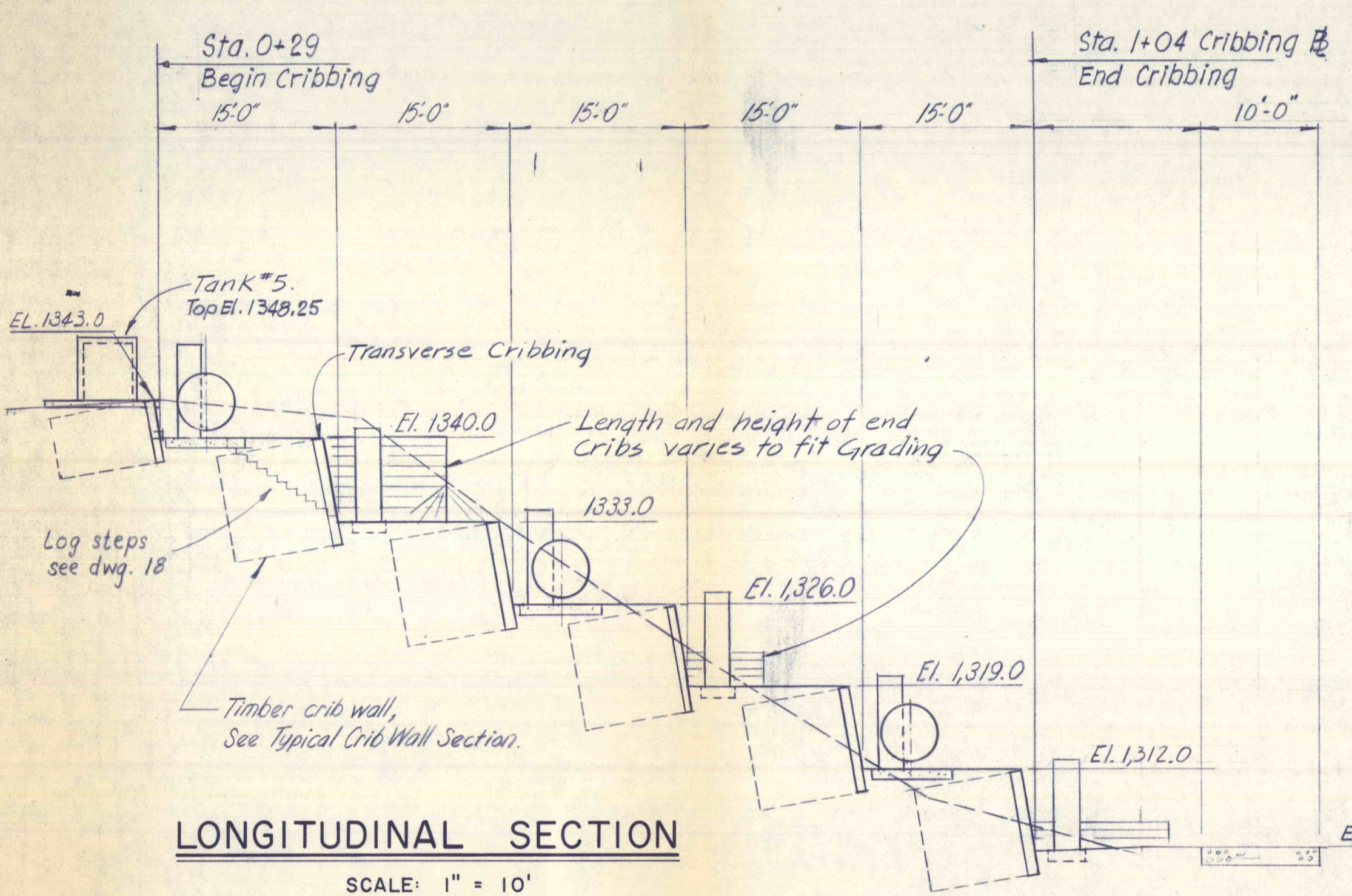


NOTE:
Cribbing material may be sawn or not sawn so long as the minimum dimension exceeds 6"



NO.	DATE	REVISION	APPR.
SUBMITTED			
APPROVED		<i>Stephen J. McBride</i>	
APPROVED		<i>Andrew E. Friedrich</i>	
APPROVED		<i>3 E. K. for V. M. Brand</i>	

COMMONWEALTH OF PENNSYLVANIA REGISTERED PROFESSIONAL ENGINEER STEPHEN J. MCBRIDE No. 17965-E	
COMMONWEALTH OF PENNSYLVANIA DEPARTMENT OF ENVIRONMENTAL RESOURCES OFFICE OF RESOURCES MANAGEMENT	
CONTRACT NO. SL 135-10	
QUAKAKE TUNNEL DEMONSTRATION PROJECT	
PACKER TWP.	CARBON CO., PA.
GEO - Technical Services CONSULTING ENGINEERS & GEOLOGISTS 851 So. 19th St. HARRISBURG, PENNA.	
UPFLOW UNITS INSTALLATION & CRIBBING	
DRAWN BY J.L.T.	DATE APRIL 1977
CHECKED BY S.J.M.	SCALE As Shown
DRAWING NO. 12 of 18	