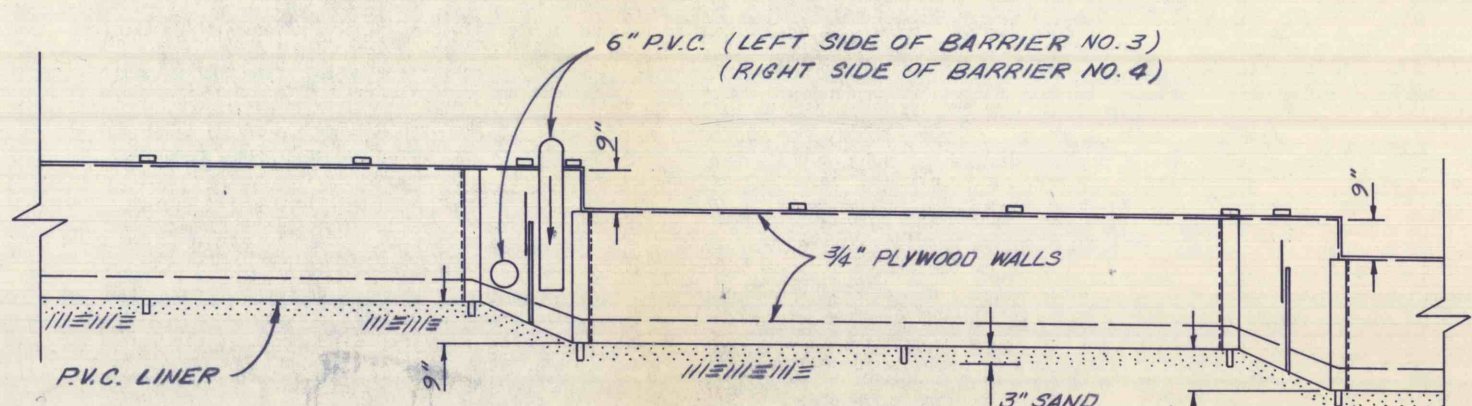
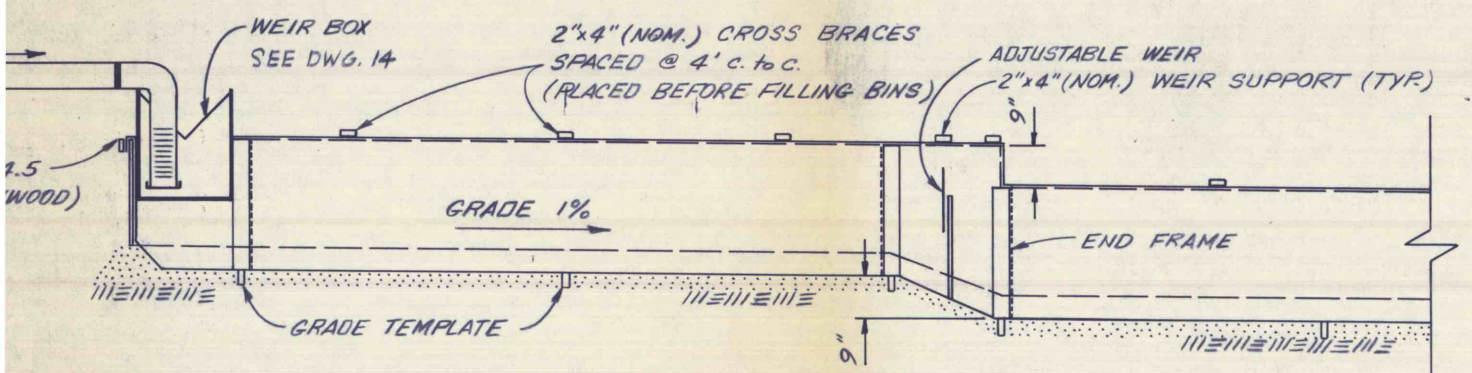


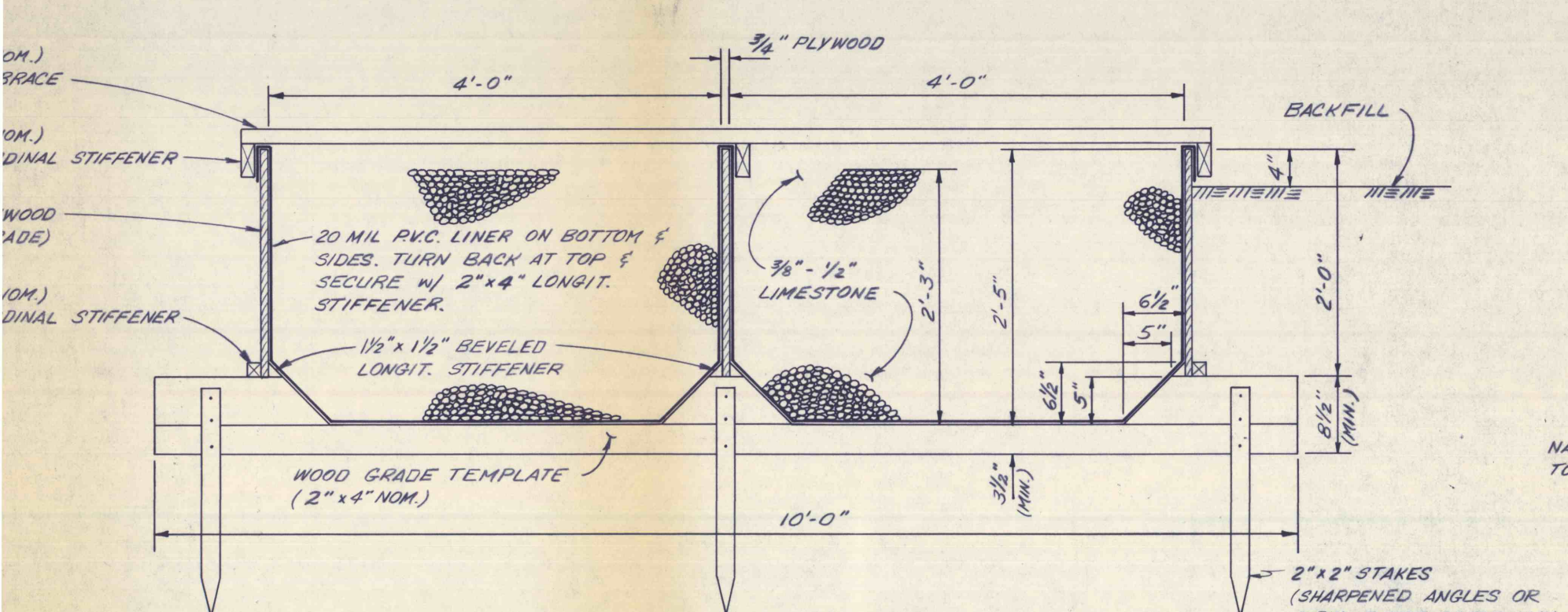
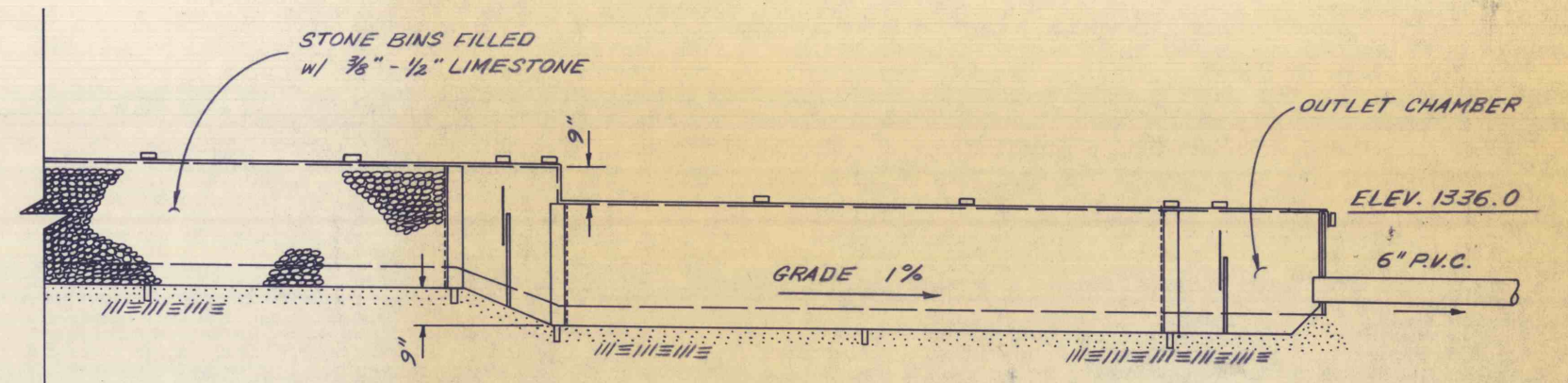
**PLAN OF BARRIERS NO. 2,3,4 & 5**

SCALE: 3/8" = 1'



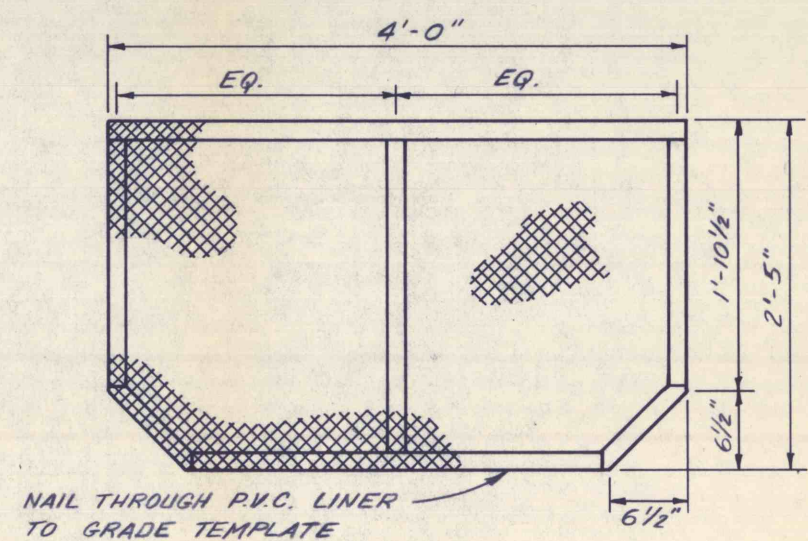
**PROFILE**

SCALE: 3/8" = 1'



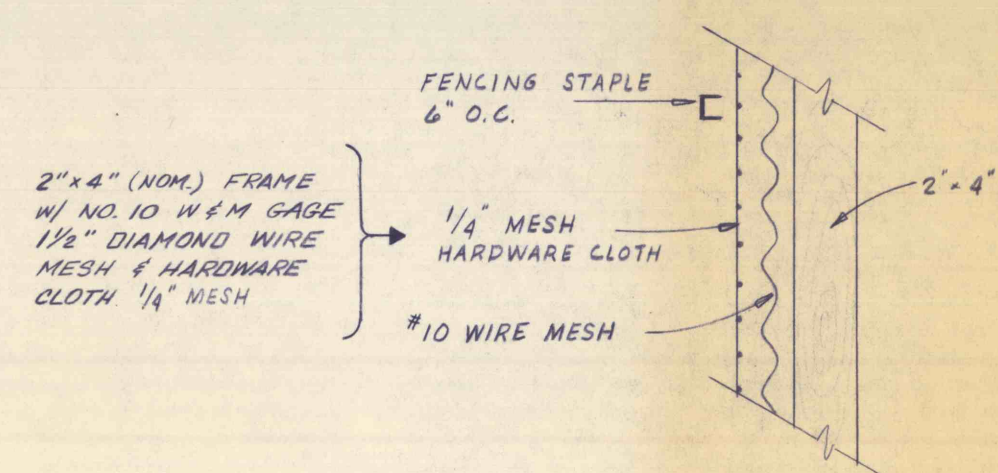
**TYPICAL SECTION**

SCALE: 1" = 1'



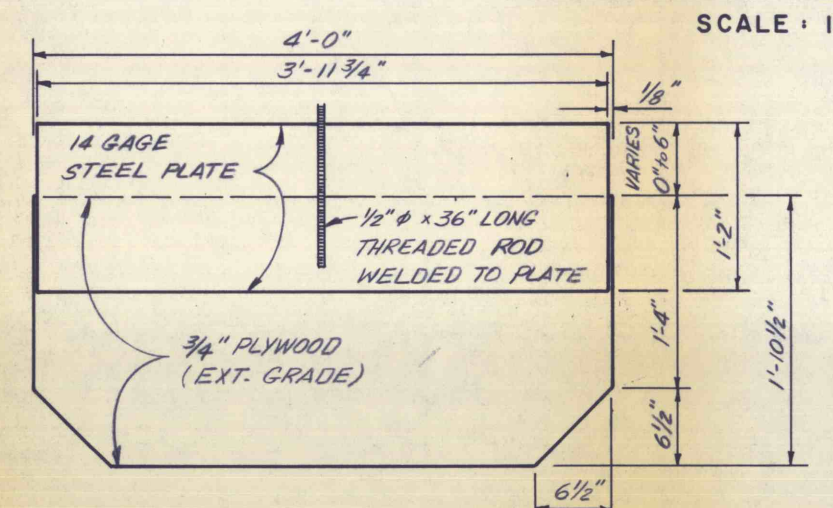
**END FRAME**

SCALE: 1" = 1'



**MESH CONSTRUCTION DETAIL**

SCALE: 1 1/2" = 1'



**ADJUSTABLE WEIR**

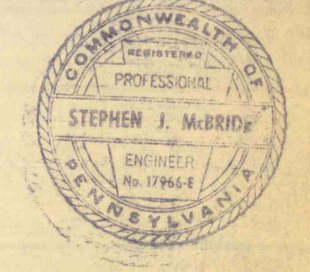
SCALE: 1" = 1'

NOTE:  
FOR WEIR INSTALLATION AND ANCHORING DETAILS SEE BARRIER NO. 1 ON DWG. NO. 6

**NOTES**

- 1) SAND TO BE PLACED AND COMPACTED FLUSH WITH TOP OF GRADE TEMPLATES. (INC. 6 1/2" FILLETS)
- 2) STONE FILLING AND BACKFILLING TO BE DONE SIMULTANEOUSLY WITH THE DIFFERENCE IN HEIGHT NEVER TO EXCEED 6".
- 3) THE BOTTOM 6" OF THE LIMESTONE SHALL BE HAND PLACED OR PLACED BY OTHER APPROVED METHODS, WHICH WILL NOT PUNCTURE OR TEAR THE P.V.C. LINER. THE CONTRACTOR SHALL REPLACE OR PATCH, AT HIS COST, ANY DAMAGED LINER MATERIAL.

NO.	DATE	REVISION	APPR.
SUBMITTED			
PROFESSIONAL			
APPROVED			
APPROVED			



COMMONWEALTH OF PENNSYLVANIA  
DEPARTMENT OF ENVIRONMENTAL RESOURCES  
OFFICE OF RESOURCES MANAGEMENT

CONTRACT NO. SL 135-10-102.1

QUAKAKE TUNNEL DEMONSTRATION PROJECT  
PACKER TWP. CARBON CO., PA.

GEO - Technical Services  
CONSULTING ENGINEERS & GEOLOGISTS  
851 So. 19th St. HARRISBURG, PENNA.

**BARRIERS NO. 2,3,4 & 5**

DRAWN BY WEH	DATE APRIL 1977	DRAWING NO. 8 of 18
CHECKED BY SJM	SCALE As Shown	