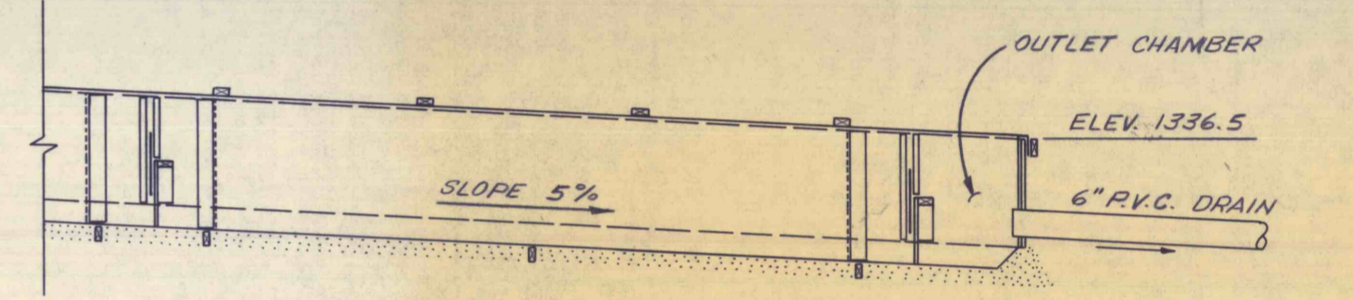
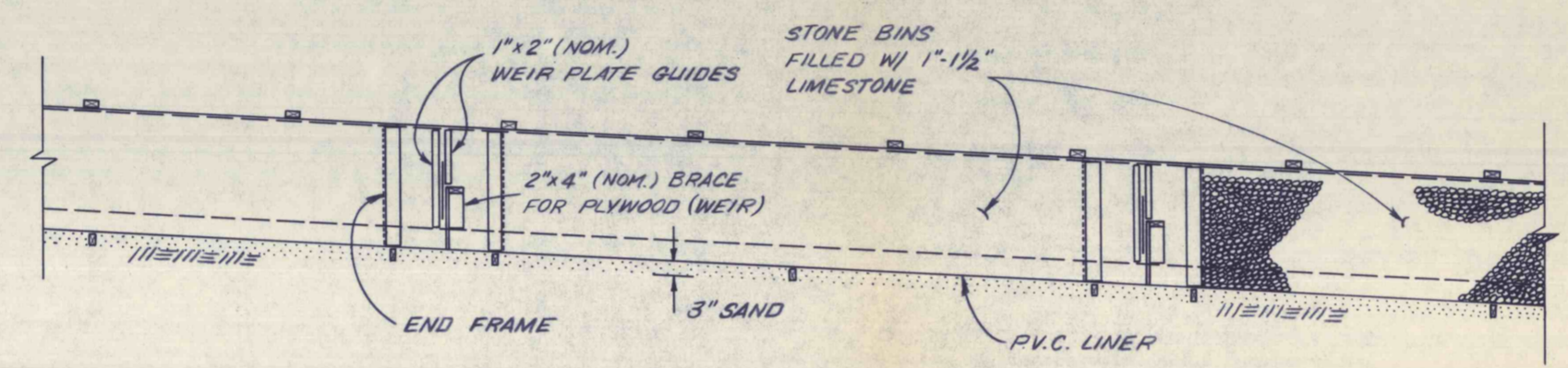
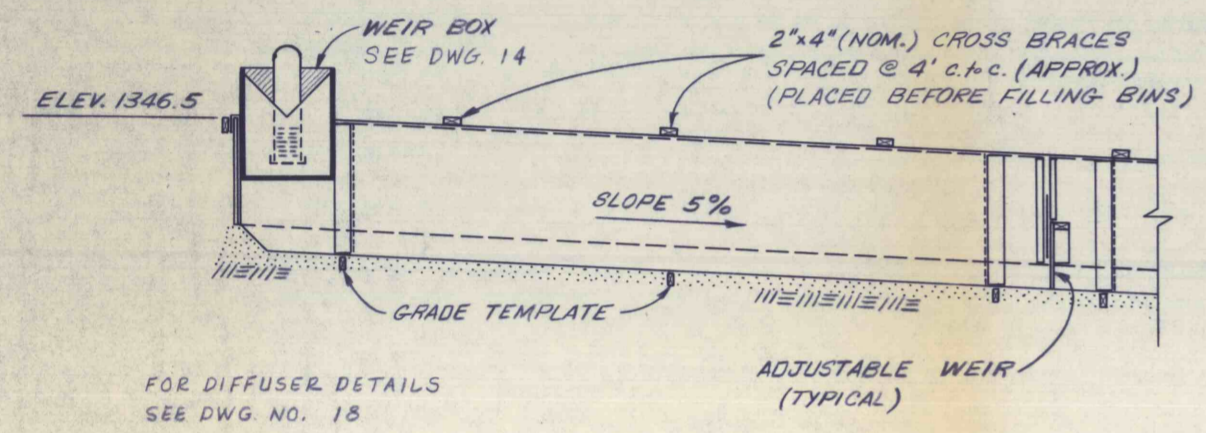


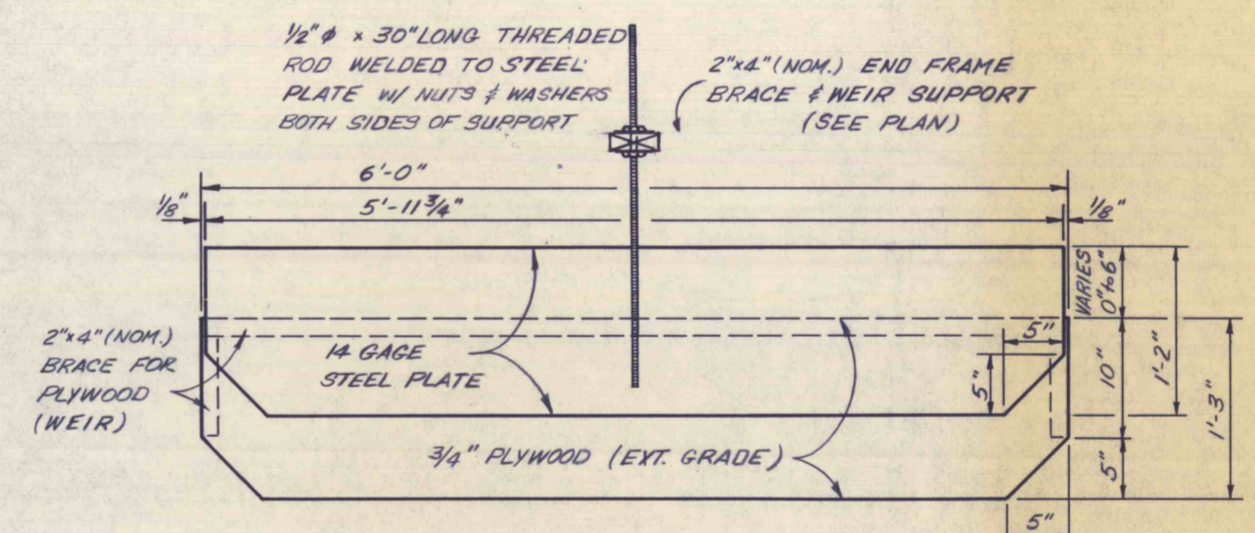
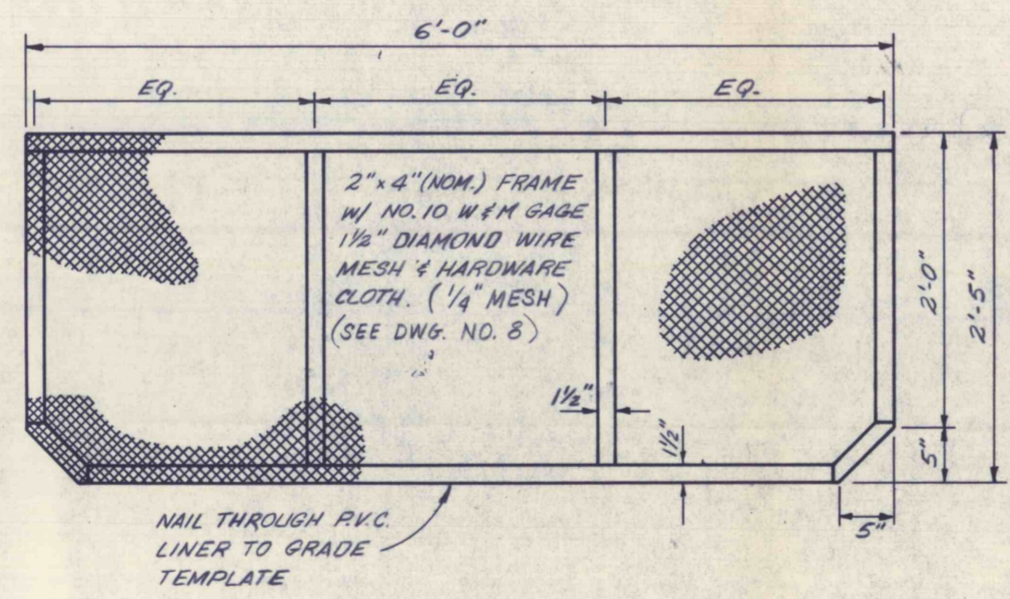
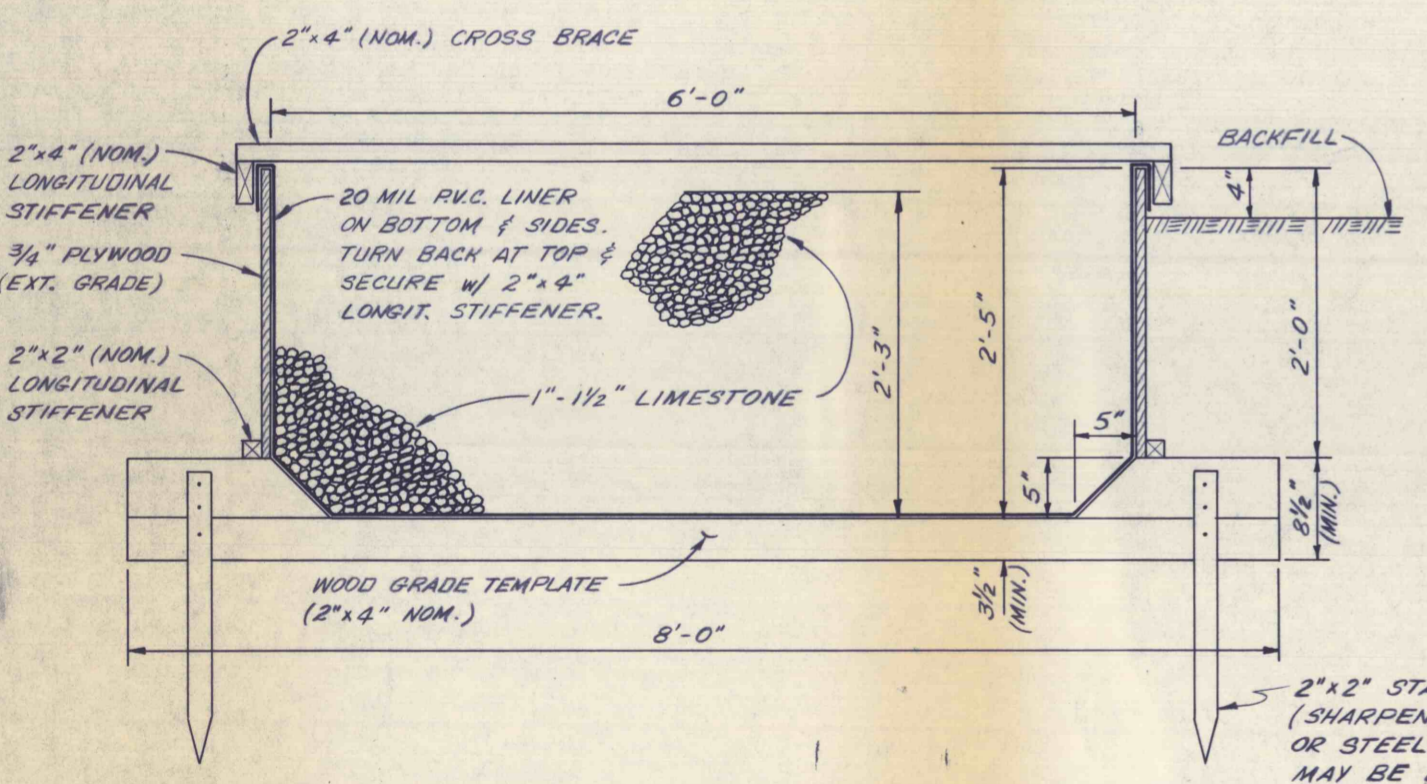
PLAN OF BARRIER NO. 1

SCALE: 3/8" = 1'



PROFILE

SCALE: 3/8" = 1'



ADJUSTABLE WEIR

SCALE: 1" = 1'

TYPICAL SECTION

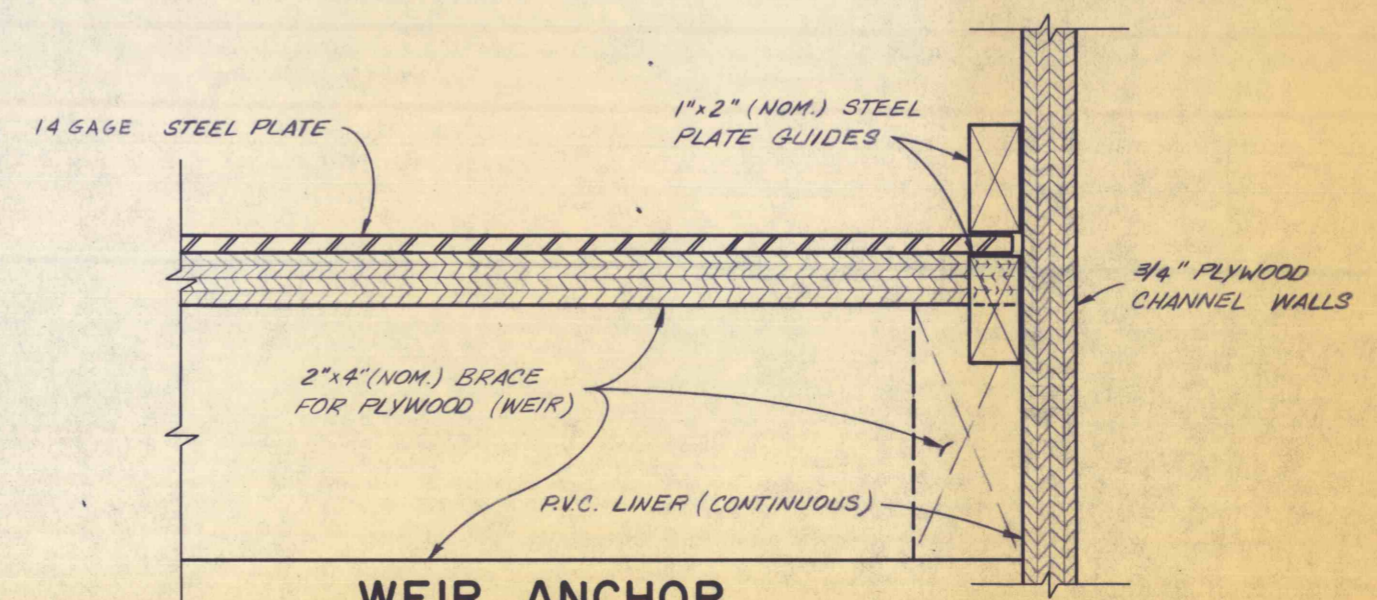
SCALE: 1" = 1'

END FRAME

SCALE: 1" = 1'

NOTES

- 1.) SAND TO BE PLACED AND COMPACTED FLUSH WITH TOP OF GRADE TEMPLATES. (INCL. 5" FILLETS)
- 2.) STONE FILLING AND BACKFILLING TO BE DONE SIMULTANEOUSLY WITH THE DIFFERENCE IN HEIGHT NEVER TO EXCEED 6".
- 3.) THE BOTTOM 6" OF THE LIMESTONE SHALL BE HAND PLACED OR PLACED BY OTHER APPROVED METHODS, WHICH WILL NOT PUNCTURE OR TEAR THE P.V.C. LINER. THE CONTRACTOR SHALL REPLACE OR PATCH, AT HIS COST, ANY DAMAGED LINER MATERIAL.



WEIR ANCHOR

SCALE: HALF SIZE

NO.	DATE	REVISION	APPR.
SUBMITTED			
PROFESSIONAL			<i>Stephen J. McBride</i>
APPROVED			<i>Andrew C. Friedrich</i> CHIEF - DIVISION OF MINE AREA RESTORATION
APPROVED			<i>S. E. Kyle for V.M. Grand</i> DIRECTOR - BUREAU OF RESOURCES PROGRAMMING
COMMONWEALTH OF PENNSYLVANIA DEPARTMENT OF ENVIRONMENTAL RESOURCES OFFICE OF RESOURCES MANAGEMENT			
CONTRACT NO. SL 135-10-102.1			
QUAKAKE TUNNEL DEMONSTRATION PROJECT PACKER TWP. CARBON CO., PA.			
GEO - Technical Services CONSULTING ENGINEERS & GEOLOGISTS 851 So. 19th St. HARRISBURG, PENNA.			
BARRIER NO. 1			
DRAWN BY	DATE	DRAWING NO.	
WEH	APRIL 1977	7 of 18	
CHECKED BY	SCALE		
SJM	As Shown		