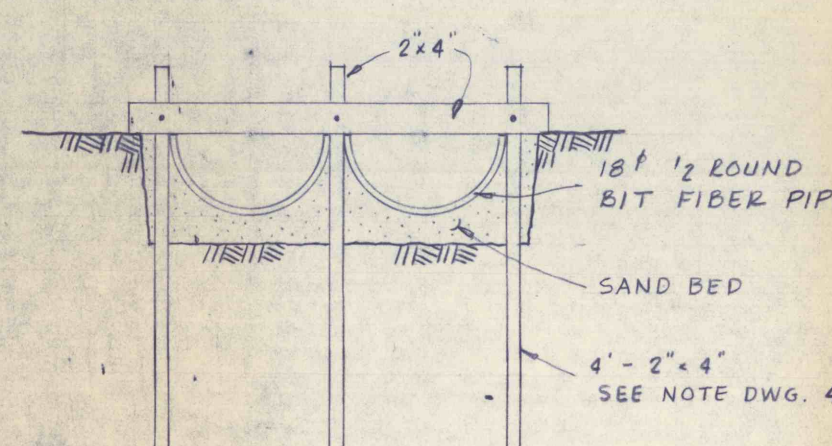
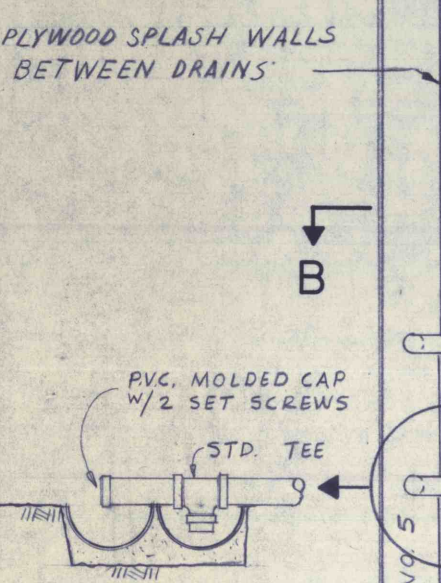
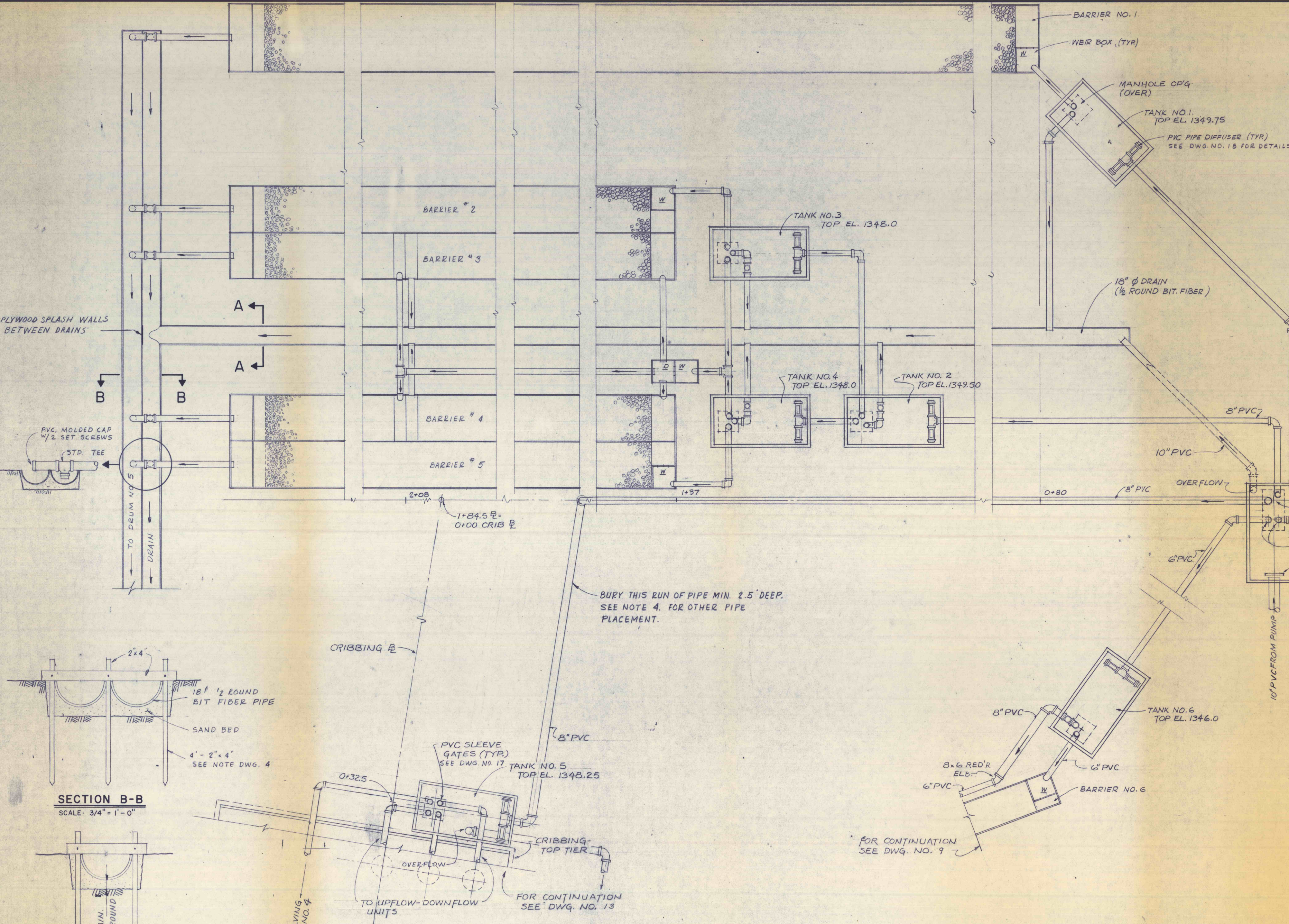
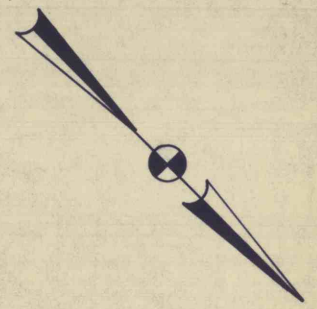
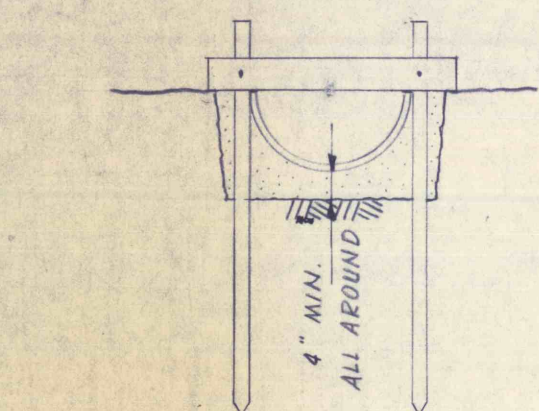


**NOTES:**

1. ALL PIPING 6" PVC UNLESS OTHERWISE NOTED
2. D DIVISION BOX - SEE DWG. 14
3. W WEIR BOX - SEE DWG. 14
4. 2" x 2" STAKES (SHARPENED ANGLES OR STEEL FENCE POSTS) MAY BE USED IF REQUIRED
5. EXCEPT WHERE NOTED OTHERWISE OR WHERE THE RUN OF PIPE CANNOT BE DRAINED BY GRAVITY, PIPES SHALL BE PLACED IN SHALLOW TRENCHES WITH MINIMAL BACKFILL.



**SECTION B-B**  
SCALE: 3/4" = 1'-0"



**SECTION A-A**  
SCALE: 3/4" = 1'-0"

BURY THIS RUN OF PIPE MIN. 2.5' DEEP. SEE NOTE 4. FOR OTHER PIPE PLACEMENT.

FOR CONTINUATION SEE DWG. NO. 9

FOR CONTINUATION SEE DWG. NO. 13

**PLAN**

NO.	DATE	REVISION	APPR.
SUBMITTED			
PROFESSIONAL			<i>Stephen J. McBride</i>
APPROVED			<i>Andrew C. Friedrich</i> CHIEF - DIVISION OF MINE AREA RESTORATION
APPROVED			<i>J. E. Kyle for V. M. Beard</i> DIRECTOR - BUREAU OF RESOURCES PROGRAMMING
COMMONWEALTH OF PENNSYLVANIA DEPARTMENT OF ENVIRONMENTAL RESOURCES OFFICE OF RESOURCES MANAGEMENT			
CONTRACT NO. SL 135-10-102.1			
QUAKAKE TUNNEL DEMONSTRATION PROJECT PACKER TWP CARBON CO., PA.			
GEO-Technical Services CONSULTING ENGINEERS & GEOLOGISTS 851 So. 19th St. HARRISBURG, PENNA.			
<b>PIPING PLAN</b>			
DRAWN BY	DATE	DRAWING NO.	
WEH	APRIL 1977	6 of 18	
CHECKED BY	SCALE		
SJM	1/4" = 1'-0"		