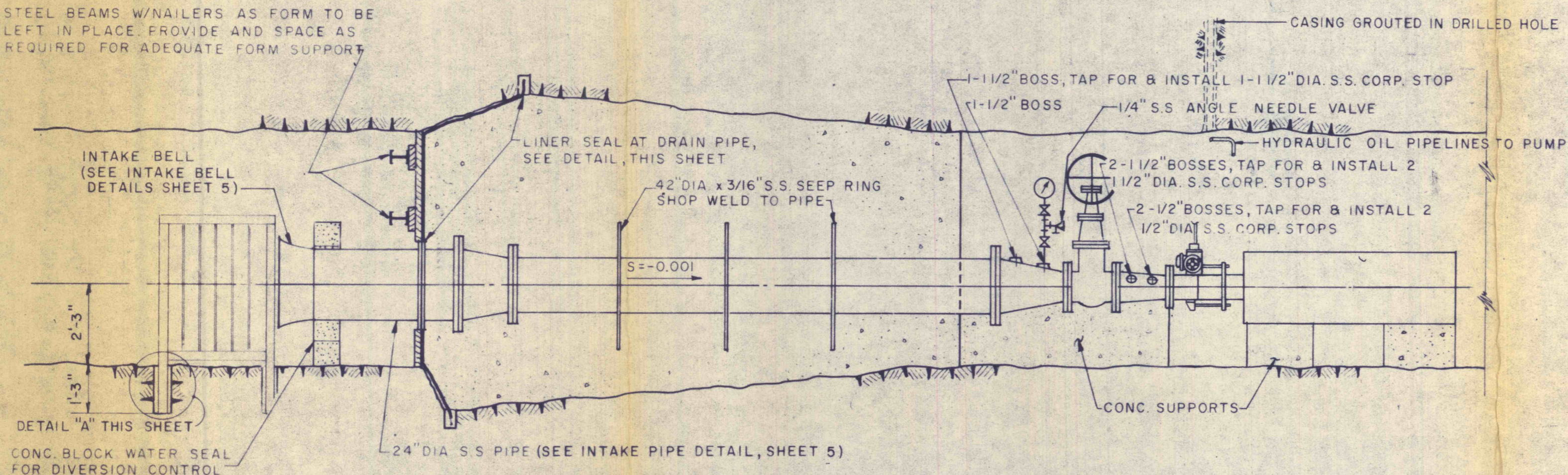
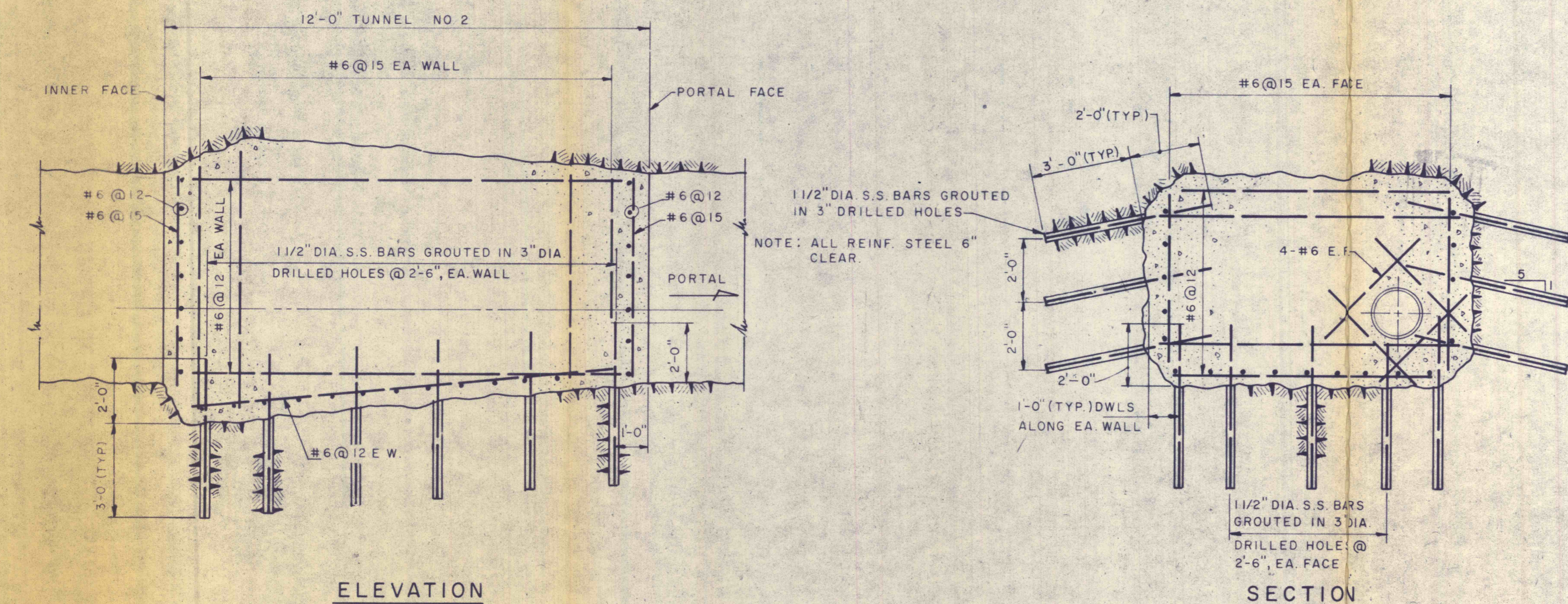


PLAN-TUNNEL NO. 2

STEEL BEAMS W/NAILERS AS FORM TO BE LEFT IN PLACE. PROVIDE AND SPACE AS REQUIRED FOR ADEQUATE FORM SUPPORT

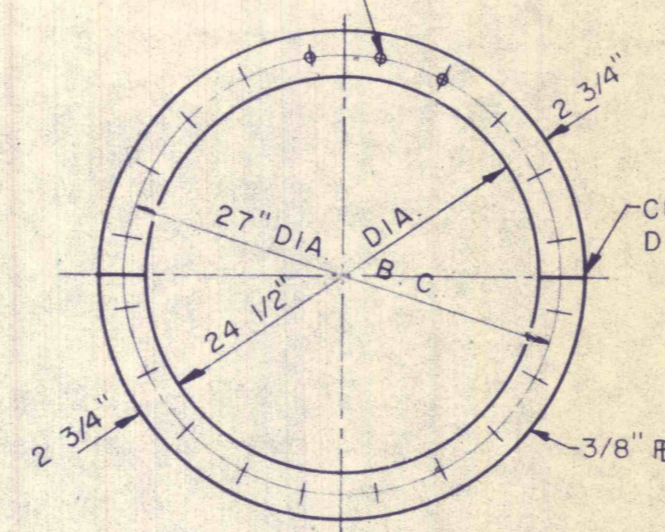


ELEVATION-TUNNEL NO. 2

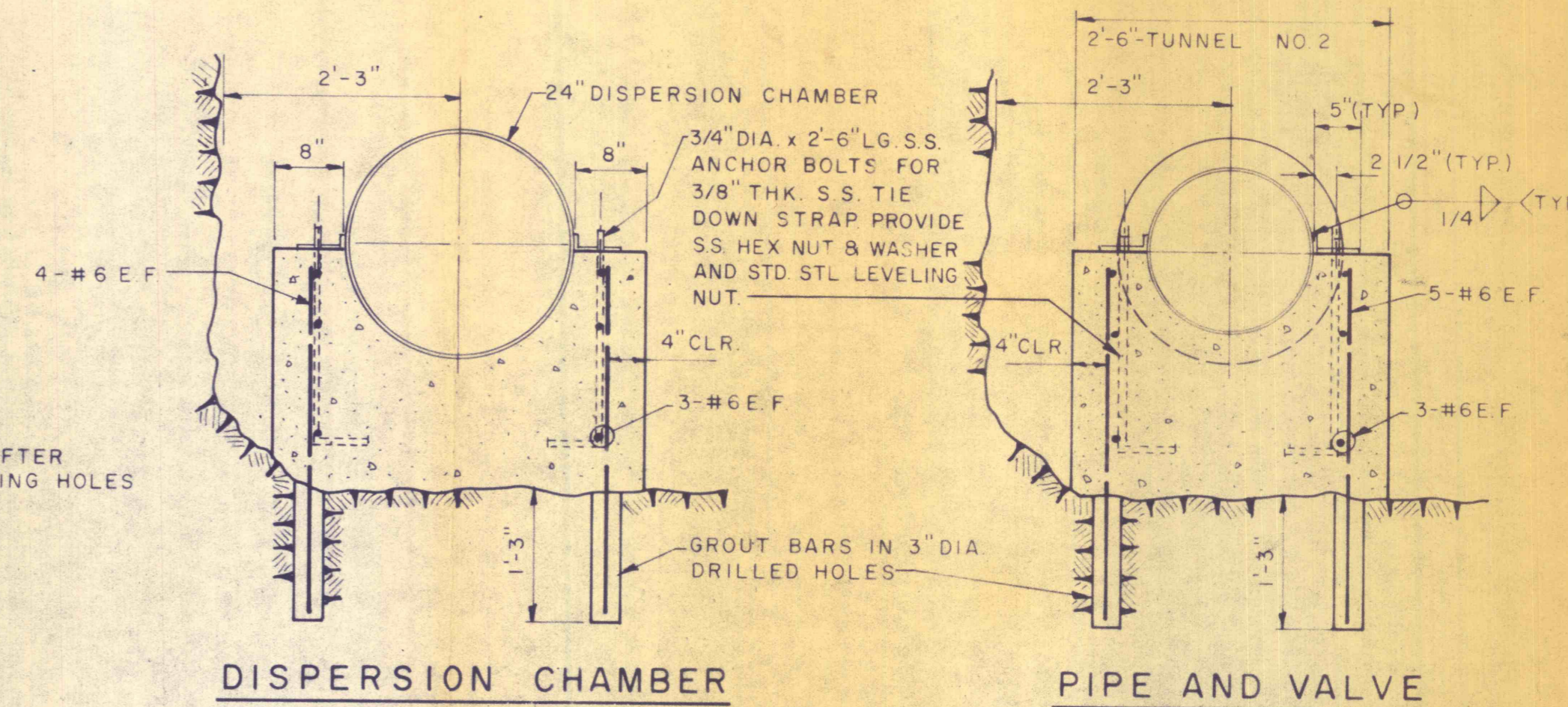


REINFORCING DETAILS

DRILL 20, 3/8" DIA HOLES FOR 1/4" BOLTS.



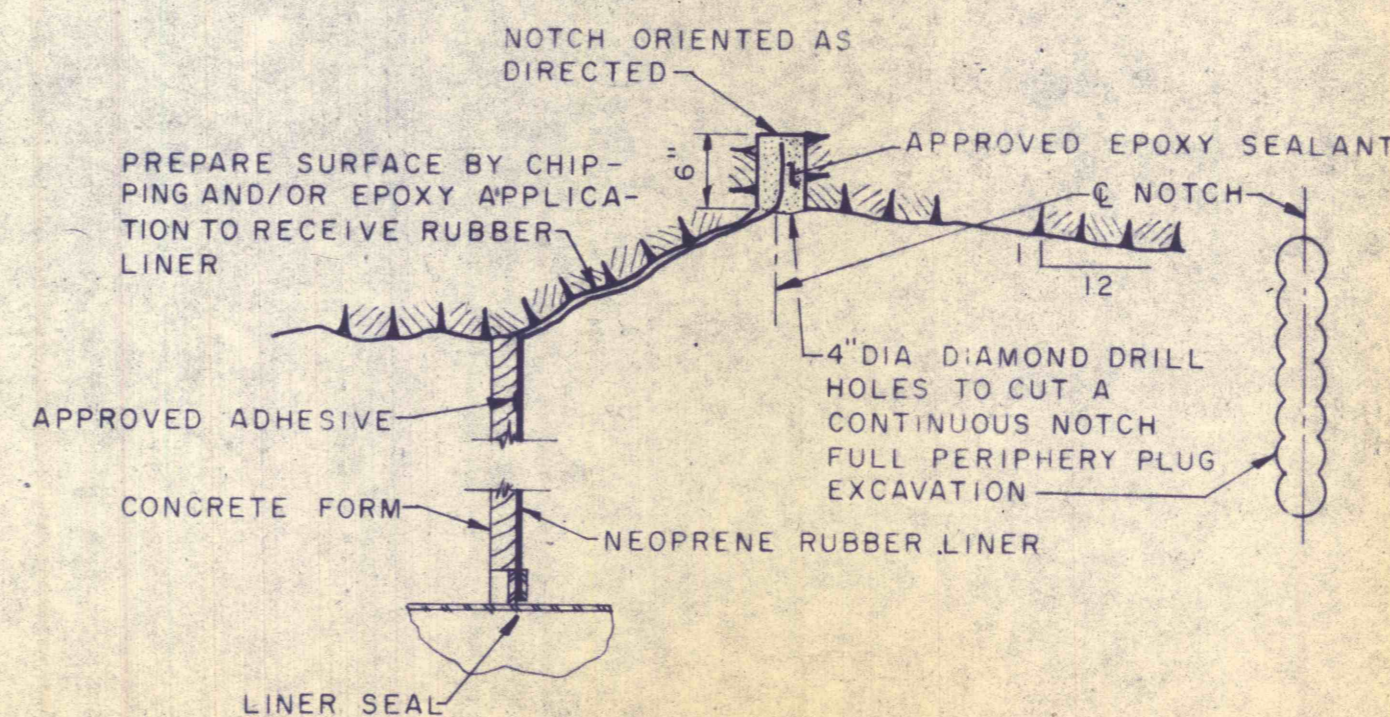
LINER RETAINER



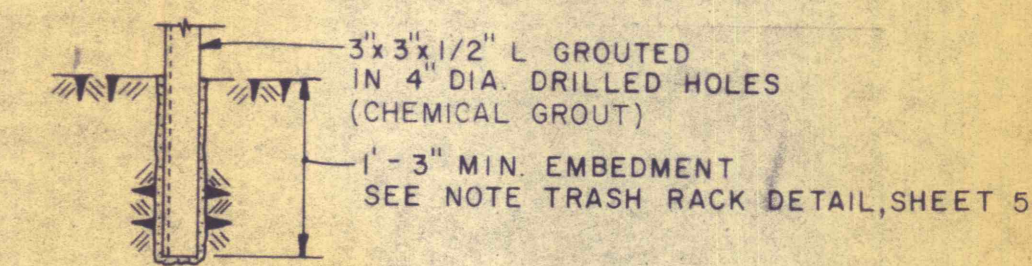
DISPERSION CHAMBER

PIPE AND VALVE

PIPE SUPPORTS



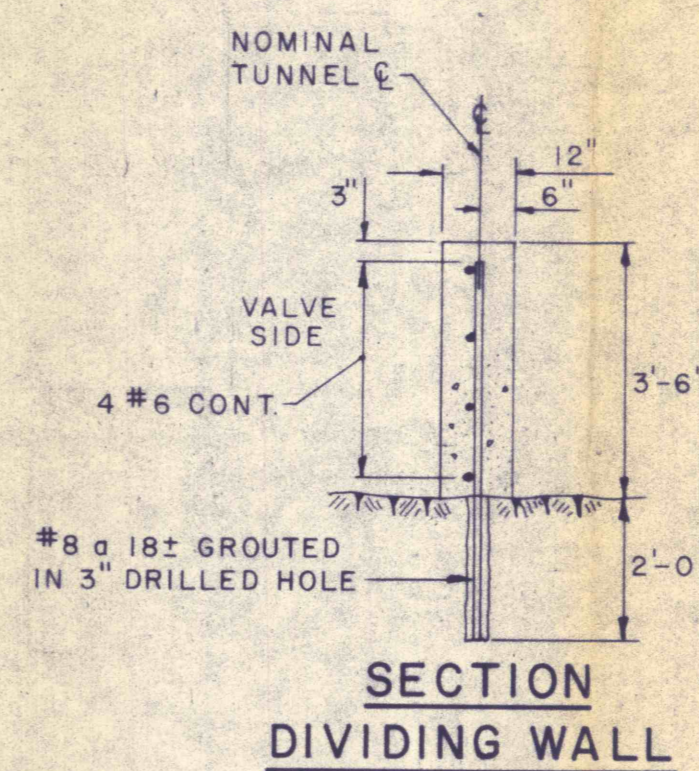
LINER SEAL DETAIL-AT WALL



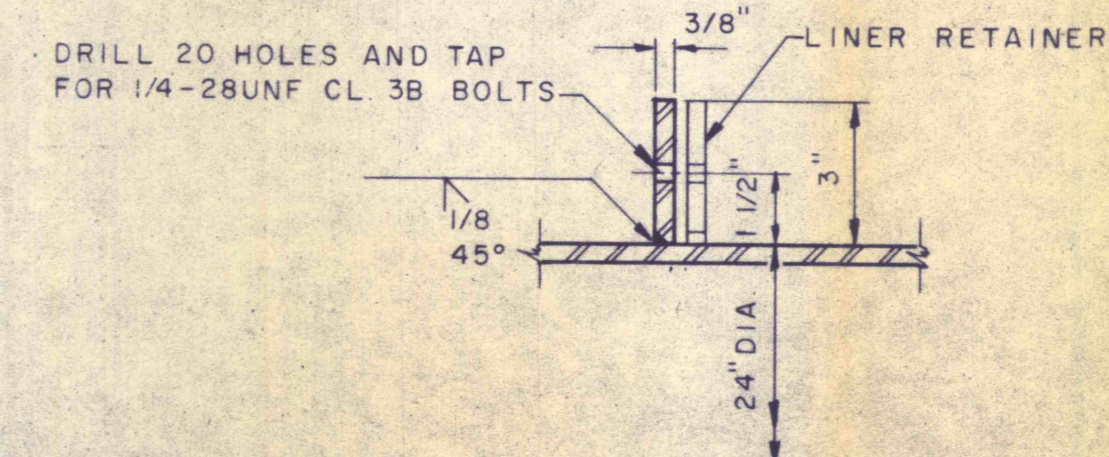
DETAIL "A"

GENERAL NOTE:

1 INSTRUMENT DETAILS NOT SHOWN ON THIS SHEET SEE SHEET 6



SECTION DIVIDING WALL



LINER SEAL DETAIL

NO.	DATE	REVISION	APPR.

SUBMITTED	<i>Culickering</i>	PROFESSIONAL
APPROVED	<i>Robert A. Ramer</i>	CHIEF - DIVISION OF MINE RECLAMATION
APPROVED	<i>D. P. Negro</i>	DIRECTOR - BUREAU OF DESIGN

CHARLES W. PICKERING
 REGISTERED PROFESSIONAL ENGINEER
 11/29/74 DATE

COMMONWEALTH OF PENNSYLVANIA
 DEPARTMENT OF ENVIRONMENTAL RESOURCES
 OFFICE OF RESOURCES MANAGEMENT

PROJECT NO. SL 135-3-1B
MINE DRAINAGE
POLLUTION ABATEMENT
CATAWISSA CREEK
SCHUYLKILL COUNTY

GANNETT FLEMING CORDRY & CARPENTER, INC.
 Consulting Engineers
 P.O. BOX 1963 HARRISBURG, PA.

DRAWN BY	DATE	DRAWING NO.
E.T.H.		4 OF 6
CHECKED BY	SCALE	
A.R.B.	NO SCALE	